

LaGrand

ANGUS HEREFORD RANCH



The 2005 National Western Reserve Grand Champion Carload of Angus Bulls - They Sell.



The 2005 National Western Grand Champion Pen of Hereford Bulls - Two Sell.

SATURDAY, APRIL 9, 2005, NOON (CST)

At LaGrand Angus and Hereford Ranch North - 11 miles north of Salem, South Dakota.

LaGrand

44130 279th St.
 Freeman, SD 57029
 Office (605) 925-7611
 Fax (605) 925-4354
 Duane & Lance Pankratz, Owners
 Steve Patton, Purebred Manager
 Home (605) 925-4963 • Cell (605) 359-6537
 Web site: www.lagrandranch.com
 E-mail: kpatton@gwtc.net

ANGUS HEREFORD RANCH

Dear Cattlemen,



Lance LaGrand Pankratz



Laura and Duane Pankratz



Steve Patton (Angus Manager),
 Kelli (Ranch Secretary) Kade and
 Karson Patton

Welcome to the sixth annual LaGrand Angus & Hereford Ranch Bull and Female Sale. We have had much good fortune since our last Spring Sale. Our Hereford Program is off and running with the Grand Champion Hereford Pen of Bulls in Denver 2005. People from all breeds claimed them the best pen of any breed in Denver they could remember. The pick of that pen, LaGrand ReLoad 80P sold for \$55,000 for one-half interest, a very big thank you to Ray Farms, Abingdon, IL. His flushmate brother, 75P, sells in this sale along with five other brothers by our great Hereford herd sire "Wideload." Our 2005 Angus Carload entry in Denver primarily sired by Special Design and Bon View New Design 878, created lots of interest. They were named the Reserve Grand Champion Carload, and were the heaviest actual weight and WDA in Denver. Our Angus and Hereford herd sires continue to move semen worldwide.

With all of this going on, we still are staying the course on producing balanced-trait cattle to help commercial cattlemen and seedstock growers both to achieve their goals. It has been very exciting to see cattle sired by our herd sires continue to thrive in all aspects of the purebred cattle industry.

Call and ask about the "LaGrand" second to none guarantee. Every bull sells with his first breeding season covered. The breeding season is defined as the first 90 day period following the first turn out of bulls.

If any injury occurs, a replacement will be provided if available. Credit in next year's sale minus salvage value on the original bull is also an option. If you happen to buy five or more bulls, you will receive an additional 5%. Don't forget to bring your trailers sale day to take advantage of our discount of \$50 off per bull if you haul your own. The bottom line is that our customer is happy!

Although our cattle bring us much pleasure, our biggest source of pride is our growing list of customers who become our friends. More and more people are asking us to send them a bull, sight-unseen, that will work for their goals.

For those who wish to preview the bulls, you are always welcome, and we look forward to your visit and seeing you on the 10th.

Steve Patton

Steve Patton, Purebred Cattle Manager



James Luke, Stephen Stuelpnagel, Tom Broders, Jared Dick, Dave Pankratz, Dylan Koepkey, Gary Auch – Freeman Ranch



Justin Mogck, James Scott, Mike Shock, Chris Paulsen – North Ranch.



Amdahl family, TJ, Heather, Jessica, Tim, JD, Marcia and Megan – North Ranch Crew

LaGrand

ANGUS AND HEREFORD RANCH

SATURDAY
APRIL 9, 2005
NOON (CST)

**At LaGrand Angus and Hereford Ranch North -
11 miles north of Salem, South Dakota**

SALE DAY PHONES:

(605) 523-2000 • (605) 523-2002 • (602) 359-6537 • Conference Phone (605) 523-9050

AUCTIONEER:

Tracy Harl, Hastings, Nebraska

ASSOCIATION REPRESENTATIVES:

Troy Thomas, President, South Dakota Angus Association
Chris Styles, Vice President, South Dakota Angus Association
Kevin Geppert, Secretary/Treasurer, South Dakota Angus Association

LIVESTOCK PUBLICATION REPRESENTATIVES:

Vern Frey, *Angus Journal*
Jeff Kapperman, *Tri-State Neighbor*
Terry Cotton, *Angus Journal*
Jim Geis, *Western Livestock Journal*
Jim Danekas, *Angus, The Magazine*
Kirby Goettsch, *Western Livestock Reporter*
Joe Rickabaugh, *Hereford World*
Chris Effling, *Hereford World*

Buyers unable to attend the sale may send their bids to the Sale Manager, Regional Manager, Field Representatives or Auctioneer.

SALE MANAGER:

AMERICAN ANGUS HALL OF FAME
Tom Burke, Kurt Schaff, Jeremy Haag
(816) 532-0811

SALE CONSULTANTS:

Art Handel, Rapid City, SD (605) 391-8233
Bob McGill, Ione, CA (916) 996-9471, (209) 274-6362
Steven Lastovica, Milano Livestock Exchange, Salado, TX (254) 770-8650,
Cell (512) 455-7641, Office (254) 947-3677
Gary Vance, Faith Livestock, Faith, SD (605) 967-2200
Joseph Kvigne, Dell Rapids, SD (605) 670-1785

DIRECTIONS TO THE SALE SITE:

At LaGrand Angus North, the former Bon View Farm, Canova, South Dakota. Eleven miles north of Salem, South Dakota on Hwy. 81.

ACCOMMODATIONS:

Ramkota Hotel Best Western
1-29 Russell St.
Sioux Falls, SD (605) 336-0650

Super 8 Hotel
Hwy. 81 • Freeman, SD (605) 925-4888
(A block of rooms has been reserved at both Ramkota Hotel and the Super 8. Please ask for the LaGrand Angus rate.)

Ramada Inn Airport
1301 W Russell St.
Sioux Falls, SD (605) 336-1020

Sheraton
1211 North West Ave.
Sioux Falls, SD (605) 331-0100

Holiday Inn
1625 W. Havens St.
Mitchell, SD (605) 996-6501

Home Motel
Salem, SD (605) 425-2828

Upon request, LaGrand Angus will be happy to make reservations for you. Please call Kelli at (605) 925-7611.

AIR TRANSPORTATION:

Sioux Falls, South Dakota Airport is approximately 53 miles from the sale site. From the airport, go west on I-90 for 32 miles to Exit 364 Salem/Yankton. Turn right and go north on Hwy. 81 for 16 miles. Ranch is located on the east side of Hwy. 81. LaGrand Angus will gladly meet your flight given prior notice.

HERD HEALTH:

All cattle will be accompanied by proper health certificates for immediate shipment. These cattle have been tested for Johne's disease, BVD PI and Bovine Leukosis Virus (BLV).

NEW FREE DELIVERY:

Free delivery of BULLS to your ranch within 350 miles, beyond 350 miles to central points.

TERMS AND CONDITIONS:

Cattle will sell under the standard Terms and Conditions as recommended by the American Angus Association.

LIVESTOCK MORTALITY INSURANCE:

A representative from American Live Stock Insurance Company will be available to assist you with mortality insurance for your purchases.

RETAINED INTEREST:

LaGrand retains a one-third semen interest in each bull in this sale book except where otherwise listed.

ULTRASOUND, SCROTAL AND PELVIC INFORMATION AVAILABLE!

Visit the *Angus Journal* Web site, www.angusjournal.com or our Web site, www.lagrandranch.com, and view this sale book online.



Sale book prepared by the Sale Managers, TOM BURKE, KURT SCHAFF, JEREMY HAAG, AMERICAN ANGUS HALL OF FAME, At the WORLD ANGUS HEADQUARTERS, Box 660, Smithville, MO 64089-0660. Phone: (816) 532-0811. Fax: (816) 532-0851. E-mail: angushall@earthlink.net - www.angushall.com



Tom Burke



Kurt Schaff



Jeremy Haag

COMMENTS FROM THE SALE MANAGER

The 2005 National Western Reserve Grand Champion Carload of Bulls - They sell along with their herd mates.

Each and every year, the LaGrand program takes another gigantic stride forward in the progress of their Angus herd that has evolved into one of the most dynamic and impressive herds anywhere.

LaGrand Angus Ranch has the honor of being the 2003 ROV Breeder of the Year and was also Premier Breeder of the 2004 Northwest Regional Junior Preview, with cattle carrying the LaGrand prefix winning countless major shows throughout the country.

The cattle that sell in the sale are destined for success. The track record is proven and the potential is limitless. As you evaluate this breathtaking offering, you will find prospect after prospect with the quality to compete in the strongest of competition. The pedigrees are exceptional, and the program led by Duane and Lance Pankratz and Steve Patton is second to none.

It is a pleasure and privilege for each of us at the American Angus Hall of Fame to personally assist Duane and Lance Pankratz and Steve Patton and their crew in the presentation of this spectacular offering. Please don't hesitate to call on us at the American Angus Hall of Fame if we can be of assistance in any way with your selection decisions. We are here to serve.

Sincerely,

Tom Burke

Kurt Schaff

Jeremy Haag

GENERAL INFORMATION

SALE LOCATION:

Sale will be held at LaGrand Angus located 11 miles north of Salem, South Dakota on Hwy. 81, or from Hwy. 34-81 junction go eight miles south on Hwy. 81.

DELIVERY:

LaGrand Angus offers free delivery on bulls within a 350 mile radius of Salem. Or take advantage of our special Sale Day Only - Haul Your Own Discount, and receive \$50 per bull discount if you bring your own trailer sale day and haul your own. NO DISCOUNT ON FEMALES.

VOLUME DISCOUNT:

If you purchased a bull at last year's sale, you will be receiving a 5% discount on bull purchases this year. Anyone who purchases a bull this year will receive a 5% discount on a bull at our 2006 sale. A 5% discount will also be given on the purchase of five or more bulls. NO DISCOUNTS ON FEMALES.

HERD HEALTH:

All cattle will be accompanied with proper health papers. All bulls selling have been fertility tested by the herd veterinarian. All bulls have received Vira Shield, Lepto and 7-way Clostridium. They are immunized for both Type 1 and Type 2 BVD, Rednose, Para Influenza and BRV. They were tested negative for Johne's Disease, BVD PI and Leucosis.

TERMS AND CONDITIONS:

The terms of the sale are cash and all settlements must be made at the close of the auction. All cattle will sell according to the terms and conditions of the American Angus Association.

SIGHT UNSEEN POLICY:

LaGrand Angus Ranch will guarantee 100% satisfaction on any lots purchased by sight unseen order or they come home. Interest: We reserve one-third semen interest in all of the bulls selling. Some bulls will sell at half interest. The interest retained will be with LaGrand Angus and Hereford Ranch.

LIVESTOCK CONDITIONING:

These bulls and heifers were raised on a high roughage ration to insure their maximum breeding potential.

INSPECTION:

Cattle may be inspected at any time prior to the sale at LaGrand Angus and Hereford North Ranch.

ULTRASOUND, SCROTAL AND PELVIC INFORMATION AVAILABLE!

HOW TO READ AND USE THE INFORMATION IN THIS SALE BOOK

Lot

Lot Name

Calved Date	Sex Reg Number	Tattoo
Paternal Grand sire		
Paternal Grand dam		
Maternal Grand sire		
Maternal Grand dam		

Sire

Dam

Performance	
BW	1
WW	2
YW	3
MILK	4
Carcass	
CW	8
MARB	9
RE	10
FAT	11
%RP	12
Ultrasound	
%IMF	13
RE	14
FAT	15
%RP	16

BW	205-DAY	RATIO	365-DAY	RATIO
5	6		7	

1 - BW EPD

The birth weight EPD is a figure expressed in pounds and is a predictor of an individual's contribution to its progeny's weight at birth and is a comparison to breed average. One of the greatest concerns in regard to birth weight is its effect on the calving-ease of the first calf heifers. It is a general rule of thumb that a Birth Weight EPD up to +3.0 is acceptable on most first calf heifers.

2 - WW EPD

The weaning weight EPD is expressed in pounds as the amount of increase or decrease in weaning weight you would expect from the progeny of a bull compared to an average bull of the breed for weaning weight.

3 - YW EPD

The yearling weight EPD applies the same way as weaning weight EPD only in yearling form.

4 - MILK EPD

The milk EPD is a predictor of a sire's genetic merit for milk and mothering ability as expressed in his daughters, or in other words that part of weaning weight attributed to milk production.

5 - BW

Birth weight is the actual weight of a calf taken in pounds within 24 hours after birth.

6 - 205-Day Wt.

205-day adjusted weight is the weaning weight of a calf adjusted to a common age of 205-days and adjusted for the age of the dam, for accurate comparison reasons.

7 - 365-Day Wt.

365-day adjusted weight is the yearling weight of a calf adjusted to a common age of 365 days and adjusted for age of the dam, for accurate comparison reasons.

8 - Carcass Weight EPD (CW)

Expressed in pounds, is a predictor of the differences in hot carcass weight of a sire's progeny at a given end point, compared to the progeny of an average sire in the Angus breed.

9 - Marbling EPD (Marb)

Expressed in a fraction, is the difference in a subjective USDA marbling score of a sire's progeny at a given end point, compared to the progeny of an average sire in the Angus breed.

10 - Ribeye Area (RE)

Expressed in square inches, is a predictor of the difference in ribeye area of a sire's progeny at a given end point, compared to the progeny of an average sire in the Angus breed.

11 - Fat Thickness EPD (Fat)

Expressed in inches, is a predictor of the differences in fat thickness of a sire's progeny, between the 12th and 13th ribs, at a given end point, compared to the progeny of an average sire in the Angus breed.

12 - Percent Retail Product (%RP)

Is a predictor of the difference in pounds of saleable retail product of a given sire's progeny, compared to the progeny of an average sire in the Angus breed.

13 - Intramuscular Fat (%IMF)

Is a predictor of the difference in a sire's progeny for percent intramuscular fat in the ribeye muscle compared to an average sire in the Angus breed.

14 - Ribeye Area (RE)

Is a predictor of the difference in square inches of ribeye area of a sire's progeny, compared to the progeny of an average sire in the Angus breed.

15 - Fat (FAT)

Expressed in inches, is a predictor of the difference in external fat thickness of a sire's progeny compared to the progeny of an average sire in the Angus breed. Measurements taken between the 12th and 13th ribs and over the rump are used to generate the Fat EPD.

16 - Percent Retail Product (%RP)

Is a predictor of the difference in pounds of saleable retail product of a sire's progeny compared to the progeny of an average sire in the Angus breed.

**Ultrasound information
will be available after
April 1.**

LaGrand

Second To None Guarantee

LaGrand Angus guarantees all bulls against any injury that would keep them from being a breeder for the first breeding season. Breeding season is defined as the first 90-day period following first turnout of bulls! If a problem occurs, we will bring you a suitable replacement or you will receive full credit, minus the salvage value of the original bull, toward another purchase. LaGrand Angus will provide ongoing customer service and focuses on buyer satisfaction. The bottom line is that our customer is happy. This credit or replacement guarantee pertains strictly to the physical loss of the bull.



If you are unable to attend the sale, watch and bid live via Satellite.

Superior's live audio and pretaped video of each animal selling will be broadcast via satellite by Superior Productions on RFD-TV, DishNetwork channel 9409 and DirecTV channel 379. Interested buyers can call in and bid live on the animal that is selling. Superior Productions representatives handling the phones will turn the bid in directly to the auctioneer. Information and a video buyer's number can be received by contacting Superior Productions at **800-422-2117** prior to sale day.

Suggested guidelines for best results when using yearling bulls.

We are firm believers in the use of yearling bulls and feel it is one of the best years of their lives. It is a time when they are easy to manage and their only concern is breeding cows. We have found that when yearling bulls are managed carefully, they will perform better over time than bulls purchased as two-year-olds. Here are some suggested guidelines for care of yearling bulls; and to help insure your 100% guarantee.

- Upon receipt at your ranch, keep yearling bulls separate from older bulls and feed them a maintenance ration of 5 to 8 lbs./head of grain (corn, oats, or bull pellets) and free choice of hay. Reduce the amount of grain fed gradually, so bulls are on straight hay or grass two weeks prior to turning them out.

- Where possible, try to limit the bulls to 45 to 60 days of pasture service the first year. At this time or as soon as possible, remove the bulls and put them in separate pastures with plenty of good quality grass.
- It is best to feed yearling bulls separate from older bulls until after their second breeding season. This allows them to achieve the growth and strength necessary to compete with older bulls for feed and space.
- A winter-feeding ration of 2 to 4 lbs. of grain, cake or pellets plus free choice hay will put the bulls in condition and allow them to grow and develop through the winter.

The little added cost and care of feeding a yearling bull is usually made up for the average discount in price when buying yearlings versus two-year-olds. You will also benefit by one and probably two or three more years of use out of a well-managed and healthy bull purchased as a yearling.

OUR FEEDING PROGRAM

OVERVIEW

On behalf of Hubbard Feeds Inc. I welcome you to the 2005 LaGrand Angus Ranch Performance Bull and Female Sale. It is my pleasure to work as the Nutritionist for LaGrand Angus. I think you will agree that LaGrand Angus continues to produce and promote the type of Angus cattle that meet the needs and exceed the expectations of both the commercial and purebred producer. Together with LaGrand Angus I strive to develop optimal nutritional and management programs to match and express the genetic potential of the LaGrand Angus breeding and show stock while giving special attention to safeguarding soundness and reproductive longevity.

NUTRITIONAL PHILOSOPHY

LaGrand Angus, Hubbard Feeds Inc., and I believe in the concept of developing bulls and replacement females, not finishing them. The nutritional treatment of breeding stock from birth to breeding can have a profound effect on their lifetime reproductive potential. For this reason, LaGrand Angus bulls and replacement females are developed on high fiber diets from weaning to sale time. The goal at

LaGrand Angus is to express the lean grain potential of the cattle without compromising structural integrity and breeding performance.

BULL AND REPLACEMENT FEMALE DEVELOPMENT

To properly develop the LaGrand Angus breeding stock, we pay special attention to their energy, protein, trace mineral and vitamin requirements. Bulls and replacement females are developed on high fiber, moderate energy, high protein diets. Particular attention is given to proper vitamin and trace mineral supplementation to maximize reproductive development and ensure reproductive longevity. To this end, trace mineral supplementation includes chelated (organic) trace minerals (Albion Laboratories Inc.). We think you will agree that our nutritional philosophy has produced an exceptional set of fertile breeding bulls and replacement females that are ready to go to work for you. Buy with confidence.

D. Allen Stateler, Ph.D.
Field Beef Nutritionist
Hubbard Feeds Inc.

The sure way into the finest restaurants.

Through our exclusive
line of DNA tests,
Bovigen provides
an easy and
accurate way to
help increase

Quality Grade
and
Tenderness

that can bring
your beef into the
finest restaurants.

GeneSTAR®

know. **more.now™**

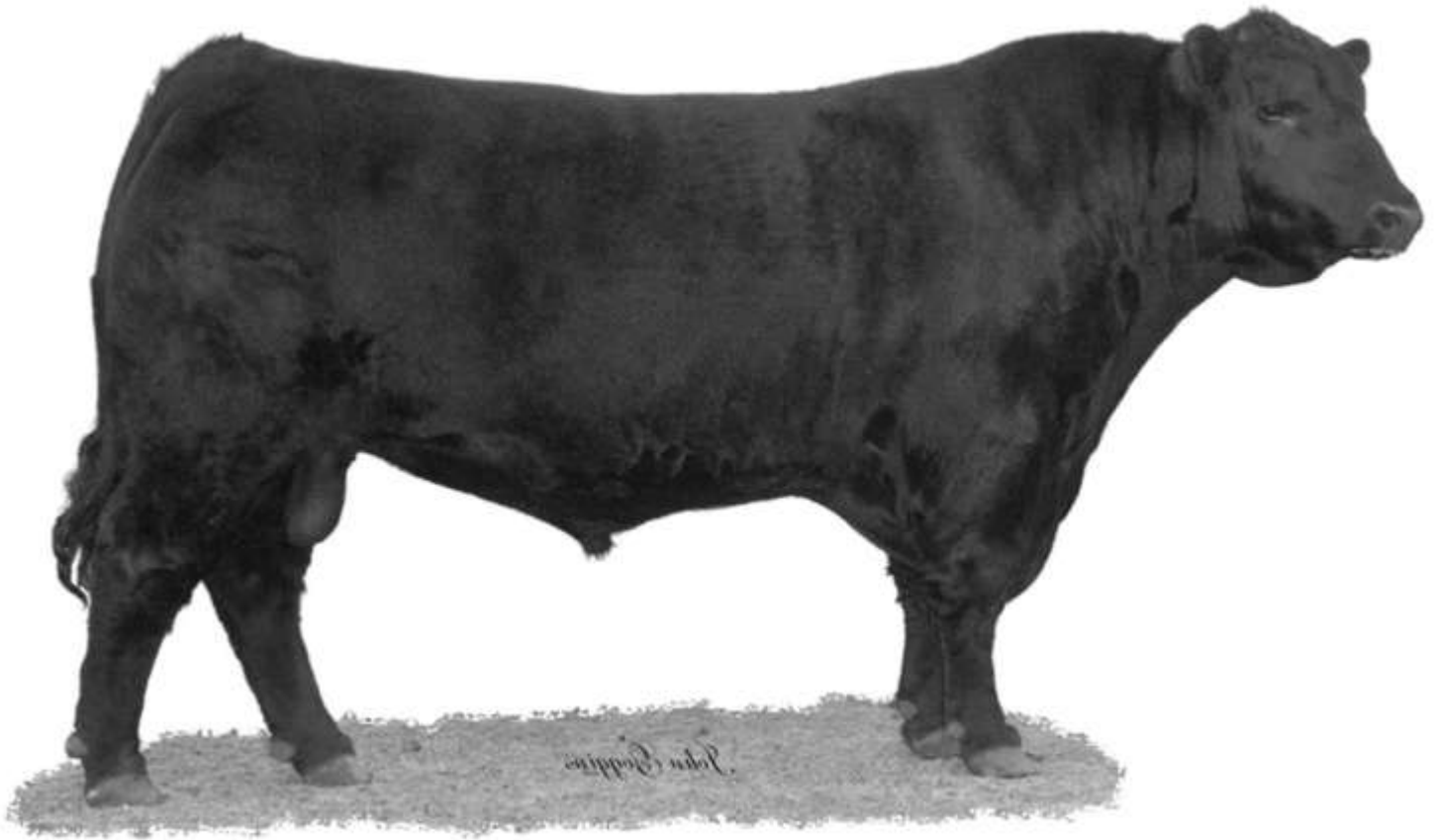
BOVIGEN
LLC

www.bovigen.com

*

1.877.BEEF.DNA

LAGRAND SENIOR HERD SIRE



WCC SPECIAL DESIGN L309 - Reference Sire A.



A

WCC Special Design L309

Birth Date: 1-4-2001 Bull +13846942 Tattoo: L309

#B/R New Design 036
Bon View New Design 878
#13062750 Bon View Gammer 85

#VDAR New Trend 315
B/R Blackcap Empress 76
#Bon View Bando 598
Bon View Gammer 233

#Emulation 31 (FX)
N Bar Primrose 2424
10474919 Primrose N Bar 9962

FCR Elation Lad 652
Miss Emulous 243
Lad 118K of JRS
#N Bar Primrose 5329

FOR REFERENCE ONLY.

The LaGrand senior herd sire featured in the Genex/CRI A.I. stud. This popular LaGrand herd sire has become one of the most widely used young sires in the Angus breed and his progeny have earned him both Weaning Weight EPD and a Yearling Weight EPD which rank in the top one percent among current sires. N Bar Emulation EXT, a maternal brother to this bull, is the proven Pathfinder Sire who is the most widely used sire in the history of the Angus breed.

Performance	
BW	+3.4
WW	+63
MILK	+98
YW	+25

Carass	
CW	+1.5
MARB	+1.16
RE	+1.02
FAT	+1.021
%RP	-1.26

Efficiency	
%IMF	+0.6
RE	+1.19
FAT	+1.031
%RP	-.35

Bon View New Design 878, his famous sire, has led the breed for registrations for two consecutive years including being the youngest bull in the history of the breed to earn that honor in 2003 and the first bull in history to sire more than ten thousand progeny in a single year in 2004.

The dam of WCC Special Design L309 is the \$100,000 N Bar Primrose 2424 whose other successful progeny include the LaGrand herd sire WCC Precision E161 J239 who is also featured in the Genex/CRI A.I. Stud, as well as the \$60,000 Roth Primrose 1247, the \$40,000 valued Roth Primrose 1263, the \$60,000 North Fork Primrose 6028 and the \$47,000 BAAR Primrose 2424-004 who was the top-selling cow of the 2004 LaGrand Fall Sale.

A daughter sold one-half interest for \$26,000 as the top-selling female of the 2003 LaGrand Fall Sale where another daughter sold one-half interest for \$17,500 as the fourth top-seller, with a maternal sister producing the heifer who sold one-half interest for \$21,000 as the second top-selling female; his daughters include a number of dominant champion females.

A son, LaGrand Designer H314, sold one-half interest for \$17,500 as the top-selling bull of the 2004 LaGrand Bull Sale and went on to be the 2004 Western National Grand Champion Bull and the 2004 Atlantic National ROV Spring Bull Calf Champion while another son sold one-half interest for \$15,500 as the second top-selling bull of the same sale.

LAGRAND SPECIAL DESIGN SONS



LAGRAND SPECIAL DESIGN H436 - Lot 1

Lot 1

LaGrand Special Design H436

Birth Date: 1-6-2004 Bull +14741776 Tattoo: H436

#Bon View New Design 878
WCC Special Design L309
+13846942 N Bar Primrose 2424

#Traveler 124 GDAR
Roth Polly 0380
+13782131 +VDAR Polly 4027

NATIONAL WESTERN BULL.

#B/R New Design 036
Bon View Gammer 85
#Emulation 31 (FX)
Primrose N Bar 9962

#QAS Traveler 23-4
Rachel Rito 813 GDAR
#VDAR Rito 953
VDAR Polly 215

BW	205-DAY	RATIO	365-DAY	RATIO
95	696	ET	1263	ET

Performance	
BW	+2.7
VW	+4.7
YW	+8.2
MILK	+2.7

Ultrasound	
%IMF	+1.09
RE	+1.09
FAT	+1.012
%RP	-1.25

Lot 2

LaGrand Special Design H440

Birth Date: 1-7-2004 Bull +14741779 Tattoo: H440

NATIONAL WESTERN BULL.

BW	205-DAY	RATIO	365-DAY	RATIO
87	711	ET	1313	ET

Ultrasound	
%IMF	+1.03
RE	-1.03
FAT	+1.012
%RP	-1.18

Lot 3

LaGrand Special Design H442

Birth Date: 1-7-2004 Bull +14741781 Tattoo: H442

NATIONAL WESTERN BULL.

BW	205-DAY	RATIO	365-DAY	RATIO
87	711	ET	1313	ET

Ultrasound	
%IMF	+1.04
RE	+1.18
FAT	+1.021
%RP	-1.26

Lot 4

LaGrand Special Design H447

Birth Date: 1-8-2004 Bull +14741790 Tattoo: H447

NATIONAL WESTERN BULL.

BW	205-DAY	RATIO	365-DAY	RATIO
85	737	ET	1295	ET

Ultrasound	
%IMF	+1.03
RE	+1.08
FAT	+1.013
%RP	-1.17

Lot 5

LaGrand Special Design 4523

Birth Date: 3-15-2004 Bull 14682211 Tattoo: 4523

BW	205-DAY	RATIO	365-DAY	RATIO
87	679	94	1178	94

Performance	
BW	+1.4
VW	+4.2
YW	+7.5
MILK	+2.7



ROTH POLLY 0376 - Flushmate to the dam of Lots 1 through 5.

An awesome embryo flush of full brothers produced in the embryo program at LaGrand Angus Ranch by the LaGrand senior herd sire WCC Special Design L309 who is a featured member of the Genex/CRI A.I. stud with both a Weaning Weight EPD and a Yearling Weight EPD in the top one percent among current sires.

The donor dam of these bulls sold one-half interest for \$19,000 to Fairview Ranch of Montana and Kahn Cattle Company of Georgia for a \$38,000 valuation as a featured heifer calf in the 2001 LaGrand Fall Sale and she is a daughter of the rare and valuable Pathfinder Sire Traveler 124 GDAR with a progeny IMF ratio of 104 on four head.

The granddam of these bulls is a prominent member of a famous embryo flush which includes the \$50,000 Pathfinder Sire VDAR Vision 243.

A full sister to the dam of these bulls was the \$48,000 top-selling female of the 1999 Oak Hill Sale in Virginia.

LAGRAND SPECIAL DESIGN SONS



Steve Patton

LAGRAND SPECIAL DESIGN H440 - Lot 2



**2005 NATIONAL WESTERN
RESERVE EARLY CHAMPION
PEN OF BULLS- Lots 2, 3 and 4.**



Steve Patton

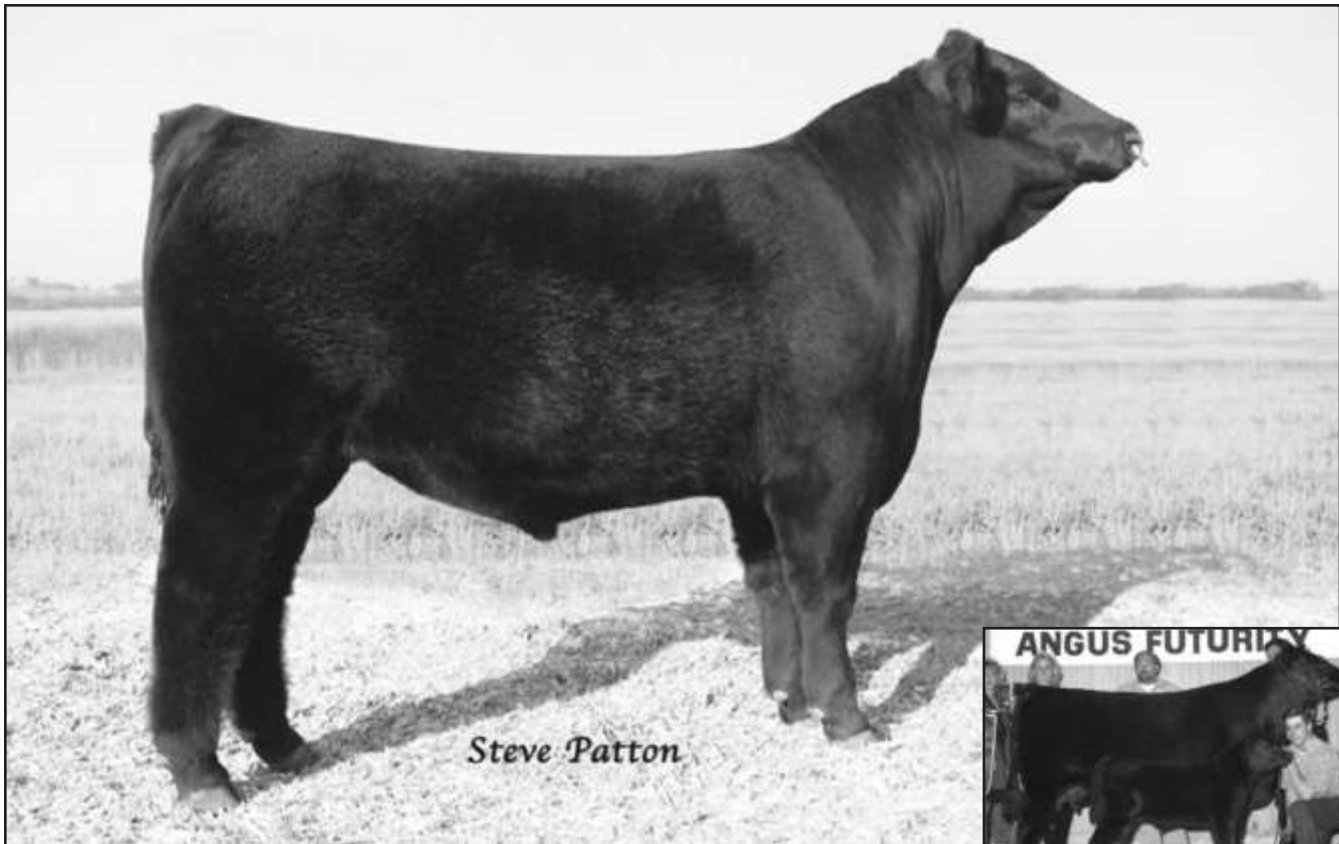
LAGRAND SPECIAL DESIGN H442 - Lot 3



Steve Patton

LAGRAND SPECIAL DESIGN H447 - Lot 4

LAGRAND SPECIAL DESIGN SONS



LAGRAND SPECIAL DESIGN H460 - Lot 6



BEAR MTN JAMIE 512 - The dam of Lots 6, 7, and 8.

6

LaGrand Special Design H460

Birth Date: 1-19-2004 Bull +14744513 Tattoo: H460

#Bon View New Design 878
WCC Special Design L309
+13846942 N Bar Primrose 2424

#B/R New Design 036
Bon View Gammer 85
#Emulation 31 (FX)
Primrose N Bar 9962

#GV Power Drive 7369
Bear MTN Jamie 512
12318469 Jauer Pine Drive 747 441

#+Brost Power Drive
#Green Valley Ectessa 82 85
#Pine Drive Big Sky
Jauer Eldorado 441 9671

NATIONAL WESTERN BULL.

BW	205-DAY	RATIO	365-DAY	RATIO
72	613	ET	1160	ET

Performance	
BW	+2.8
WW	+47
YW	+72
MILK	+17

Ultrasound	
%IMF	1.02
RE	+1.15
FAT	+0.016
%RP	1.04

7

LaGrand Special Design H464

Birth Date: 1-22-2004 Bull +14744515 Tattoo: H464

NATIONAL WESTERN BULL.

BW	205-DAY	RATIO	365-DAY	RATIO
90	691	ET	1272	ET

Ultrasound	
%IMF	1+.05
RE	1+.08
FAT	1+.014
%RP	1-20

8

LaGrand Special Design H456

Birth Date: 1-18-2004 Bull +14744511 Tattoo: H456

NATIONAL WESTERN BULL.

BW	205-DAY	RATIO	365-DAY	RATIO
78	680	ET	1117	ET

Ultrasound	
%IMF	1+.09
RE	1-07
FAT	1+.018
%RP	1-39

A tremendous trio of flush

brothers who were featured in the yards of the 2005 National Western Stock Show. These sons of the LaGrand and Genex/CRI featured sire WCC Special Design L309 were produced from a many-time champion dam who records a progeny weaning ratio of 102 on five natural calves and a progeny yearling ratio of 104 on three head in combination with a progeny IMF ratio of 105 on 16 head. Maternal siblings include a number of important champions and sale features.



LAGRAND SPECIAL DESIGN H464 - Lot 7



LAGRAND SPECIAL DESIGN H456 - Lot 8

LAGRAND SPECIAL DESIGN SONS



LAGRAND SPECIAL DESIGN 4045 - Lot 9

Lot 9

LaGrand Special Design 4045

Birth Date: 1-7-2004 Bull 14682098 Tattoo: 4045

#Bon View New Design 878 #B/R New Design 036
WCC Special Design L309 Bon View Gammer 85
+13846942 N Bar Primrose 2424 #Emulation 31 (FX)
Primrose N Bar 9962
CA Future Direction 5321 #GAR Precision 1680
LaGrand Primrose 245 CA Miss Power Fix 308
+14240132 Broken Arrow Roth MS RUSS806 +GDAR SVF Russ 184B
Broken Arrow Primrose3380-14

BW	205-DAY	RATIO	365-DAY	RATIO
70	852	119	1446	109

Performance	
BW	+1.0
WW	+58
YW	+92
MILK	+27

Ultrasound	
%IMF	+2.6
RE	+2.20
FAT	+0.24
%RP	-3.30

NATIONAL WESTERN BULL.

This balanced EPD herd sire prospect combines a below breed average Birth Weight EPD with a Weaning Weight EPD in the top one percent among non-parent bulls along with a Yearling Weight EPD in the top four percent and an IMF EPD in the top 15 percent.

This bull balances an individual birth ratio of 87 with individual weaning and yearling ratios of 119 and 109 respectively coupled with an individual IMF ratio of 115 as the first calf from a dam by the Genex/CRI ultrasound leader CA Future Direction 5321. The dam of this bull was produced in the embryo program at LaGrand Angus Ranch and the grandam is a LaGrand foundation donor sired by the rare growth sire GDAR SVF Russ 184B.

Lot 10

LaGrand Special Design 4252

Birth Date: 1-21-2004 Bull +14682259 Tattoo: 4252

BW	205-DAY	RATIO	365-DAY	RATIO
88	716	ET	1289	ET

Ultrasound	
%IMF	+1.01
RE	+1.16
FAT	+1.018
%RP	-1.43

Lot 11

LaGrand Special Design 4290

Birth Date: 1-25-2004 Bull +14750690 Tattoo: 4290

#Bon View New Design 878 #B/R New Design 036
WCC Special Design L309 Bon View Gammer 85
+13846942 N Bar Primrose 2424 #Emulation 31 (FX)
Primrose N Bar 9962
#Bon View Bando 598 #Tehama Bando 155
FV Everelda Entense 1494 #Bon View Dora 56
+14035290 +Sitz Everelda Entense 2636 #Traveler 124 GDAR
Sitz Everelda Entense 1137

BW	205-DAY	RATIO	365-DAY	RATIO
82	602	ET	1191	ET

Performance	
BW	+2.6
WW	+52
YW	+86
MILK	+26

Ultrasound	
%IMF	+1.01
RE	+1.13
FAT	+1.011
%RP	-1.25

A pair of flush brothers produced in the embryo program at LaGrand Angus Ranch blending the herd sire producing Everelda Entense and Primrose families by the featured herd sire WCC Special Design L309. The donor dam of these bulls balances a progeny birth ratio of 95 with a progeny weaning ratio of 109 and a progeny yearling ratio of 111 on one head. The grandam of these bulls is the \$300,000 valued Sitz Everelda Entense 2636. The dam of these bulls is a full sister-in-blood to the \$100,000 Kahn Broadband RA 94L.



SITZ EVERELDA ENTENSE 2636 -

The grandam of Lots 10 and 11.

LAGRAND SPECIAL DESIGN SONS



LAGRAND SPECIAL DESIGN 4133 - Lot 12

NATIONAL WESTERN BULL.
 This son of the LaGrand featured herd sire WCC Special Design L309 earned an individual IMF ratio of 112 and was featured in the yards of the 2005 National Western.
 The sire of this bull is a popular member of the Genex/CRI A.I. stud while the dam of this bull is by the Pathfinder Sire GAR Traveler 1489 with a grandam being bred in the SAV program.
 A maternal sister weaned her first two calves with an impressive average ratio of 114.

12 LaGrand Special Design 4133

Birth Date: 1-7-2004 Bull 14682276 Tattoo: 4133

#Bon View New Design 878
 WCC Special Design L309
 +13846942 N Bar Primrose 2424

#B/R New Design 036
 Bon View Gammer 85
 #Emulation 31 (FX)
 Primrose N Bar 9962

#GAR Traveler 1489
 RA Pride Traveler 7262
 12976680 SAV Emulation Pride 5249

#QAS Traveler 23-4
 GAR Bando 237
 #Bon View Emulation EXT 473
 SAV Sky Pride 2123

Performance	
BW	+2.2
VW	+42
YW	+69
MILK	+23

Ultrasound	
%IMF	1.09
RE	1.10
FAT	1.002
%RP	1.07

BW	205-DAY	RATIO	365-DAY	RATIO
88	659	92	1264	95

13 LaGrand Special Design 4047

Birth Date: 1-8-2004 Bull 14682102 Tattoo: 4047

#Bon View New Design 878
 WCC Special Design L309
 +13846942 N Bar Primrose 2424

#B/R New Design 036
 Bon View Gammer 85
 #Emulation 31 (FX)
 Primrose N Bar 9962

Roths Millcreek Unique
 Roth Miss Forever 2228
 14134816 +Roth Miss Forever 0425

White Oak Precise 6002
 #Mill Creek Karen
 +Northern Improvement 4480 GF
 GDAR Miss Forever 015

Performance	
BW	-6
VW	+57
YW	+91
MILK	+25

Ultrasound	
%IMF	1.11
RE	1.18
FAT	1.022
%RP	1.26

BW	205-DAY	RATIO	365-DAY	RATIO
65	858	120	1452	109



LAGRAND SPECIAL DESIGN 4047 - Lot 13

NATIONAL WESTERN BULL.
 This balanced EPD prospect stacks the genetics of the famous LaGrand featured herd sire WCC Special Design L309 and Roth's Millcreek Unique.
 This bull combines a very modest individual birth ratio of 81 with an individual weaning ratio of 120 and an individual yearling ratio of 109 coupled with an impressive individual IMF ratio of 115 and an individual ultrasound ribeye ratio of 101 as the first calf from a two-year-old dam.
 The grandam of this bull is a sister to a number of famous champions descending from the noted GDAR Miss Forever 015.
 This bull ranks in the lowest four percent among non-parent bulls for Birth Weight EPD while ranking in the top one percent for Weaning Weight EPD and in the top five percent for Yearling Weight EPD.

LAGRAND SPECIAL DESIGN SONS

NATIONAL WESTERN BULL.

Ranking in the top one percent among non-parent bulls for both Weaning Weight EPD and Yearling Weight EPD, this high-performance herd sire prospect earned individual weaning and yearling ratios of 105 in combination with an individual IMF ratio of 113 from a dam with a progeny IMF ratio of 107 on five head.

This bull is an outstanding son of the LaGrand and Genex/CRI featured sire WCC Special Design L309 from a dam by the established Pathfinder Sire N Bar Emulation EXT featuring a tabulation tracing twice to the \$100,000 N Bar Primrose 2424.

This bull is from the same Formera family that produced Finks 5522-6148.



LAGRAND SPECIAL DESIGN 4229 - Lot 14

14 LaGrand Special Design 4229

Birth Date: 1-18-2004 Bull 14682219 Tattoo: 4229

#Bon View New Design 878
WCC Special Design L309
+13846942 N Bar Primrose 2424

#B/R New Design 036
Bon View Gammer 85
#Emulation 31 (FX)
Primrose N Bar 9962

#N Bar Emulation EXT
North Fork Formera 7069
12940334 North Fork Formera 5077

#Emulation N Bar 5522
N Bar Primrose 2424
+JR Juice 286C
+Finks Formera 289 614 8E8

Performance	
BW	+4.6
WW	+60
YW	+97
MILK	+19

Maternal	
%IMF	+1.17
RE	-1.05
FAT	+0.18
%RP	-1.28

BW	205-DAY	RATIO	365-DAY	RATIO
99	754	105	1394	105

15 LaGrand Special Design 4923

Birth Date: 1-23-2004 Bull +14744499 Tattoo: 4923

#Bon View New Design 878
WCC Special Design L309
+13846942 N Bar Primrose 2424

#B/R New Design 036
Bon View Gammer 85
#Emulation 31 (FX)
Primrose N Bar 9962

+CAF Juice 1066
C&M Lady Anges 278
13069837 Summitcrest Elite 146E

#+JR Juice 2005
+Patton Lady Agnes 1054 CAF
#Gardens Prime Time
Summitcrest Elite 019C

Performance	
BW	+3.4
WW	+51
YW	+85
MILK	+24

Maternal	
%IMF	+1.11
RE	-1.06
FAT	+0.19
%RP	-1.35

BW	205-DAY	RATIO	365-DAY	RATIO
88	789	ET	1395	ET

NATIONAL WESTERN BULL.

A son of the LaGrand featured sire WCC Special Design L309 produced in the embryo program at LaGrand Angus Ranch.

The donor dam of this bull has earned a phenomenal progeny IMF ratio of 117 on seven head in combination with a progeny weaning ratio of 102 on four natural calves and a progeny yearling ratio of 107 two head and she is a former champion.



LAGRAND SPECIAL DESIGN 4923 - Lot 15

ROTH FUTURE DIRECTION 108 -

This maternal brother to Lot 15 was the \$22,000 top-selling bull of a past LaGrand Sale.

LAGRAND SPECIAL DESIGN SONS



LAGRAND SPECIAL DESIGN 4141 - Lot 16

Lot 16 LaGrand Special Design 4141

Birth Date: 1-8-2004 Bull +14753200 Tattoo: 4141

BW	205-DAY	RATIO	365-DAY	RATIO
94	714	ET	1192	ET

Ultrasound	
%IMF	+1.10
RE	+1.0
FAT	+1.01
%RP	-1.15

Lot 17 LaGrand Special Design 41424

Birth Date: 1-8-2004 Bull +14753201 Tattoo: 4142

#Bon View New Design 878 #B/R New Design 036
WCC Special Design L309 Bon View Gammer 85
+13846942 N Bar Primrose 2424 #Emulation 31 (FX)
Primrose N Bar 9962

#GDAR Rito 596 LT #Rito 2100 GDAR
WAF Blackcap 210 Forever Lady 159 GDAR
11803700 Top Blackcap 03 +Top Pine Tar W22
Top Ermine Blackcap 902

A pair of flush brothers by WCC Special Design L309 produced in the embryo program at LaGrand Angus Ranch from a donor dam with a progeny IMF ratio of 134 and a progeny ultrasound ribeye ratio of 106 on two head. A maternal sister to the dam of these bulls was a \$10,000 feature of the 2004 LaGrand Fall Sale.

BW	205-DAY	RATIO	365-DAY	RATIO
98	652	ET	1130	ET

Ultrasound	
BW	+3.6
WW	+4.6
YW	+7.2
MILK	+1.15

Ultrasound	
%IMF	+1.15
RE	+1.07
FAT	+1.01
%RP	+1.01

Lot 18 LaGrand Special Design 4092

Birth Date: 1-1-2004 Bull 14682188 Tattoo: 4092

#Bon View New Design 878 #B/R New Design 036
WCC Special Design L309 Bon View Gammer 85
+13846942 N Bar Primrose 2424 #Emulation 31 (FX)
Primrose N Bar 9962

#Traveler 1148 GDAR #QAS Traveler 23-4
North Fork Lucy 1001 #Blackcap Forever 485 GDAR
+14052768 #VDAR Lucy 425 #VDAR New Trend 315
+VDAR Lucy 920

A blending of the herd sire producing Lucy and Primrose families by the LaGrand featured sire WCC Special Design L309. This bull earned an individual weaning ratio of 108 from a dam by the Pathfinder Sire Traveler 1148 GDAR, stemming from the famous Pathfinder Dam VDAR Lucy 425.

BW	205-DAY	RATIO	365-DAY	RATIO
86	774	108	1249	99

Ultrasound	
BW	+2.2
WW	+4.8
YW	+7.4
MILK	+2.1

Ultrasound	
%IMF	+1.04
RE	-1.02
FAT	+1.022
%RP	-1.24



VDAR LUCY 425 - The Pathfinder grandam of Lot 18.

Lot 19 LaGrand Special Design 4100

Birth Date: 1-2-2004 Bull 14682205 Tattoo: 4100

#Bon View New Design 878 #B/R New Design 036
WCC Special Design L309 Bon View Gammer 85
+13846942 N Bar Primrose 2424 #Emulation 31 (FX)
Primrose N Bar 9962

Roths Millcreek Unique White Oak Precise 6002
Roth Katinka 2078 #Mill Creek Karen
14134876 Roth Katinka 9183 Bon View Ambush 1075
Bon View Katinka 1807

A blending of the Katinka and Primrose families by the popular WCC Special Design L309.

This bull balances a modest individual birth ratio of 97 with an individual weaning ratio of 115, an individual yearling ratio of 107 and an individual IMF ratio of 112 produced as the first calf from a dam by the LaGrand featured sire Roth's Millcreek Unique.

BW	205-DAY	RATIO	365-DAY	RATIO
79	826	115	1348	107

Performance	
BW	+2.8
WW	+5.6
YW	+8.7
MILK	+2.5

Ultrasound	
%IMF	+1.13
RE	+1.13
FAT	+1.003
%RP	-1.10

Lot 20 LaGrand Special Design 4101

Birth Date: 1-2-2004 Bull 14682207 Tattoo: 4101

#Bon View New Design 878 #B/R New Design 036
WCC Special Design L309 Bon View Gammer 85
+13846942 N Bar Primrose 2424 #Emulation 31 (FX)
Primrose N Bar 9962

#Famous 7001 #SAF Fame
LaGrand Ms Famous 2590 TK Karen 1369
+14233433 +GAR Precision 2445 #GAR Precision 1680
GAR Pierre 2511

Ranking in the top one percent among non-parent bulls for Weaning Weight EPD and in the top ten percent for Yearling Weight EPD, this bull balances a modest individual birth ratio of 97 with an impressive individual weaning ratio of 116 as his dam's first calf.

The dam of this bull was produced in the LaGrand embryo program.

BW	205-DAY	RATIO	365-DAY	RATIO
79	827	116	1261	100

Performance	
BW	+2.9
WW	+5.9
YW	+8.9
MILK	+2.5

Ultrasound	
%IMF	+1.12
RE	+1.39
FAT	-1.004
%RP	+1.39

Lot 21 LaGrand Special Design 4059

Birth Date: 1-9-2004 Bull 14682114 Tattoo: 4059

#Bon View New Design 878 #B/R New Design 036
WCC Special Design L309 Bon View Gammer 85
+13846942 N Bar Primrose 2424 #Emulation 31 (FX)
Primrose N Bar 9962

#Whitestone Widespread MB #N Bar Emulation EXT
LaGrand Lady Eraline 222 MB Rachel 2173
+14240118 Bear MTN Lady Eraline 302 #Oneills Duke
+Oneills Eraline 100

Ranking in the top one percent among non-parent bulls for both Weaning Weight EPD and Yearling Weight EPD, this high-performance prospect offers tremendous potential with a tabulation which concentrates the elite growth genetics of WCC Special Design L309 and Whitestone Widespread MB.

The famous grandam of this bull is a many-time champion with numerous outstanding descendants to her credit.

BW	205-DAY	RATIO	365-DAY	RATIO
73	869	121	1387	110

Performance	
BW	+2.5
WW	+6.7
YW	+10.2
MILK	+2.5

Ultrasound	
%IMF	+1.08
RE	+1.12
FAT	+1.029
%RP	-1.40

Lot 22 LaGrand Special Design 4184

Birth Date: 1-14-2004 Bull 14682299 Tattoo: 4184

#Bon View New Design 878 #B/R New Design 036
WCC Special Design L309 Bon View Gammer 85
+13846942 N Bar Primrose 2424 #Emulation 31 (FX)
Primrose N Bar 9962

#BCC Bushwacker 41-93 #Paramont Ambush 2172
Roth Pride 2059 RC Anita T Bando 918903
14143052 Roth Pride 9210 +GAR EXT 4344
Hyline Pride 210

This high-performance herd sire prospect with individual weaning and yearling ratios of 110 and 107 respectively ranks in the top one percent among non-parent bulls for Weaning Weight EPD and in the top five for Yearling Weight EPD produced as the first calf from a dam by the Genex/CRI Pathfinder Sire BCC Bushwacker 41-93.

This bull traces to the famous Hyline Pride 210.

BW	205-DAY	RATIO	365-DAY	RATIO
82	790	110	1344	107

Performance	
BW	+3.2
WW	+5.6
YW	+9.1
MILK	+2.5

Ultrasound	
%IMF	+1.07
RE	+1.24
FAT	+1.021
%RP	-1.47

LAGRAND SPECIAL DESIGN SONS

23 LaGrand Special Design 4136

Birth Date: 1-7-2004 Bull 14682286 Tattoo: 4136

#Bon View New Design 878
WCC Special Design L309
+13846942 N Bar Primrose 2424

#B/R New Design 036
Bon View Gammer 85
#Emulation 31 (FX)
Primrose N Bar 9962

+Roth Bando 8029
Roth Eldorene 0242
#13554055 VDAR Eldorene 3152

#Rito 3B17 of 0G10 Bando
+DF Empress 6015
#VDAR New Trend 315
VDAR Eldorene 354

This son of the popular WCC Special Design L309 has an individual weaning ratio of 108 and an individual yearling ratio of 102 from a Pathfinder Dam who records a progeny weaning ratio of 116 on her first three calves.

BW	205-DAY	RATIO	365-DAY	RATIO
103	775	108	1284	102

Performance	
BW	+5.3
WW	+47
YW	+80
MILK	+26

Ultrasound	
%IMF	1.05
RE	1.21
FAT	1.018
%RP	1.12



LAGRAND SPECIAL DESIGN 4136 - Lot 23

24 DH LG Special Design 365P

Birth Date: 1-16-2004 Bull 14766193 Tattoo: 365P

#Bon View New Design 878
WCC Special Design L309
+13846942 N Bar Primrose 2424

#B/R New Design 036
Bon View Gammer 85
#Emulation 31 (FX)
Primrose N Bar 9962

#+VDAR Lucys Boy
TH Lucys Pride 286K
13999257 +VAR Pride 8041

#Traveler 1148 GDAR
+VDAR Pine Drive Lucy 5
#+Rito 9FB3 of 5H11 Fullback
#Hyline Pride 712

This son of the popular WCC Special Design L309 has an individual weaning ratio of 105 and ranks in the top ten percent among non-parent bulls for Weaning Weight EPD. This bull traces to a noted Pathfinder third dam.

BW	205-DAY	RATIO	365-DAY	RATIO
90	863	105	1295	101

Performance	
BW	+2.8
WW	+49
YW	+79
MILK	+20

Ultrasound	
%IMF	1.05
RE	1.17
FAT	1.015
%RP	1.14

26 LaGrand Special Design 4338

Birth Date: 1-31-2004 Bull 14682273 Tattoo: 4338

#Bon View New Design 878
WCC Special Design L309
+13846942 N Bar Primrose 2424

#B/R New Design 036
Bon View Gammer 85
#Emulation 31 (FX)
Primrose N Bar 9962

#Basin Ambush 3905 (FR)
Basin Chloe 3589
13288974 #Basin Chloe 733

#Paramont Ambush 2172
Basin Heather Bloom 48C (R)
#+GDAR Royce 131
Basin Chloe 7010

This son of the popular WCC Special Design L309 traces to a Pathfinder granddam and features a moderate Birth Weight EPD.

BW	205-DAY	RATIO	365-DAY	RATIO
86	627	88	1230	98

Performance	
BW	+1.4
WW	+38
YW	+75
MILK	+22

Ultrasound	
%IMF	1.11
RE	1.20
FAT	1.009
%RP	1.10

25 LaGrand Special Design 4193

Birth Date: 1-16-2004 Bull 14682327 Tattoo: 4193

#Bon View New Design 878
WCC Special Design L309
+13846942 N Bar Primrose 2424

#B/R New Design 036
Bon View Gammer 85
#Emulation 31 (FX)
Primrose N Bar 9962

#+GAR Sleep Easy 1009
Circle A Beauty 773
+12935653 Circle A Beauty 2004

#Tehama Bando 155
Blacklass GAR 103
#Rito 2100 GDAR
VDAR Beauty 892

A blending of the herd sire producing Beauty and Primrose families with an individual weaning ratio of 108 and an individual yearling ratio of 102.

BW	205-DAY	RATIO	365-DAY	RATIO
N/A	771	108	1278	102

Performance	
BW	+2.5
WW	+49
YW	+78
MILK	+23

Ultrasound	
%IMF	1.02
RE	1.09
FAT	1.002
%RP	1.01

The grandam of this bull is a famous full sister to the \$25,000 VDAR Beauty 12. Two maternal sisters post a collective progeny weaning ratio of 106.

27 LaGrand Special Design 4347

Birth Date: 2-2-2004 Bull 14682294 Tattoo: 4347

#Bon View New Design 878
WCC Special Design L309
+13846942 N Bar Primrose 2424

#B/R New Design 036
Bon View Gammer 85
#Emulation 31 (FX)
Primrose N Bar 9962

#Twin Valley Precision E161 (FR)
Roth Wendy 1550
+13931145 +Double Bar Wendy 508-0100

#GAR Precision 1680
+WCC Blackcap C9 (R)
#CH 054 Rito 0100
KMR Wendy 508

A high-performance herd sire prospect ranking in the top one percent among non-parent bulls for Weaning Weight EPD and in the top two percent for Yearling Weight EPD with individual weaning and yearling ratios of 105 and 106 respectively.

BW	205-DAY	RATIO	365-DAY	RATIO
90	755	105	1341	106

Performance	
BW	+3.7
WW	+55
YW	+96
MILK	+28

Ultrasound	
%IMF	1.05
RE	1.21
FAT	1.021
%RP	1.29

This bull was produced from a dam who is the result of an embryo mating by Twin Valley Precision E161 from the LaGrand foundation donor Double Bar Wendy 508-0100.

A flush sister was an \$8,000 featured heifer in the 2004 LaGrand Fall Sale.

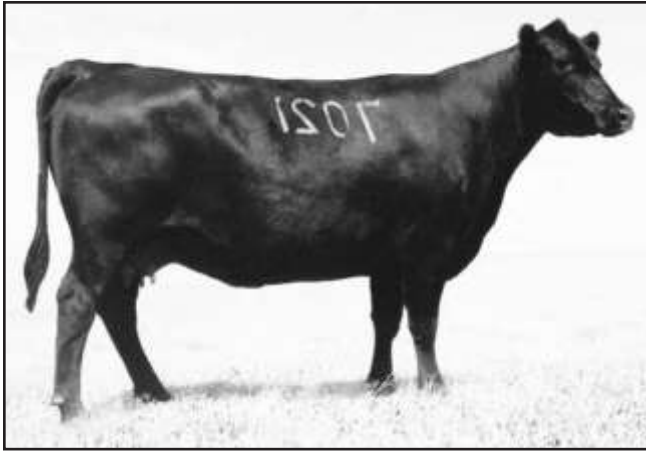


CIRCLE A BEAUTY 2004 - The grandam of Lot 25.



DOUBLE BAR WENDY 508-0100 - The grandam of Lot 27.

LAGRAND SPECIAL DESIGN SONS



TC PEG 7021 - The \$25,000 dam of Lot 30.

30 LaGrand Special Design 4449

Birth Date: 2-20-2004 Bull 14682084 Tattoo: 4449

#Bon View New Design 878 #B/R New Design 036
WCC Special Design L309 Bon View Gammer 85
+13846942 N Bar Primrose 2424 #Emulation 31 (FX)
Primrose N Bar 9962

Performance	
BW	+3.5
WW	+46
YW	+83
MILK	+23

#Sitz Traveler 9929 #DHD Traveler 6807
TC Peg 7021 Sitz Everelda Entense 1137
+12797000 #TC Peg 9100 #+Leachman Prompter
TC Peg 6108

Ultrasound	
%IMF	1.02
RE	1.02

A son of the \$25,000

BW	205-DAY	RATIO	365-DAY	RATIO
88	695	97	1276	101

LaGrand foundation donor
TC Peg 7021 by the popular WCC Special Design L309.

A full brother was the \$7,500 Lot 1 bull of the 2004 LaGrand Sale at the Henricks Cattle Company of Oklahoma.

The grandam of this bull is the famous All-American Grand Champion Cow and Pathfinder Dam TC Peg 9100 who has left a major impact on the breed.

28 LaGrand Special Design 4384

Birth Date: 2-8-2004 Bull 14682375 Tattoo: 4384

#Bon View New Design 878 #B/R New Design 036
WCC Special Design L309 Bon View Gammer 85
+13846942 N Bar Primrose 2424 #Emulation 31 (FX)
Primrose N Bar 9962

Performance	
BW	+4.8
WW	+46
YW	+80
MILK	+25

#+VDAR Lucys Boy #Traveler 1148 GDAR
North Fork Lucy 45 +VDAR Pine Drive Lucy 5
+13821286 #VDAR Lucy 425 #VDAR New Trend 315
+VDAR Lucy 920

Ultrasound	
%IMF	1.14
RE	1.11

A blending of the herd sire producing Lucy and

BW	205-DAY	RATIO	365-DAY	RATIO
99	720	101	1264	101

Primrose families sired by the popular WCC Special Design L309. This bull is a grandson of the famous Pathfinder Dam VDAR Lucy 425 who earned a phenomenal production record.

29 LaGrand Special Design 425

Birth Date: 2-10-2004 Bull Reg.No.Pdg. Tattoo: 425

#Bon View New Design 878 #B/R New Design 036
WCC Special Design L309 Bon View Gammer 85
+13846942 N Bar Primrose 2424 #Emulation 31 (FX)
Primrose N Bar 9962

Performance	
BW	+3.7
WW	+77
YW	+91
MILK	+22

+GAR EXT 4344 #N Bar Emulation EXT
North Fork Lucy 7121 +GAR Scotch Cap 509
#+12955224 #VDAR Lucy 425 #VDAR New Trend 315
+VDAR Lucy 920

Ultrasound	
%IMF	1.12
RE	1.24

A special attraction herd sire prospect by the popular

BW	205-DAY	RATIO	365-DAY	RATIO
74	733	100	1107	100

WCC Special Design L309 from a second generation Pathfinder Dam who balances a progeny birth ratio of 96 with a progeny weaning ratio of 107 and a progeny yearling ratio of 105 on four natural calves coupled with a progeny IMF ratio of 126 and a progeny ultrasound ribeye ratio of 104 on three head descending from the Pathfinder Dam VDAR Lucy 425 who balances a progeny birth ratio of 97 with progeny weaning and yearling ratios of 105 and 103 respectively on five natural calves coupled with a progeny IMF ratio of 111 on 21 head.

A maternal sister was the \$12,500 top-selling bred heifer of the 2001 LaGrand Fall Sale to Whitestone Farm of Virginia.

31 LaGrand Special Design 4405

Birth Date: 2-10-2004 Bull 14682338 Tattoo: 4405

#Bon View New Design 878 #B/R New Design 036
WCC Special Design L309 Bon View Gammer 85
+13846942 N Bar Primrose 2424 #Emulation 31 (FX)
Primrose N Bar 9962

Performance	
BW	+3.9
WW	+56
YW	+87
MILK	+18

#+Woodhill Supreme #+GDAR Oscar 711
Prairie Pride 909 Essence +Woodhill Evergreen 120
13427089 Prairie Pride Essence 355 #+R&J Cruz 109
Prairie Pride Jaybird 104

Ultrasound	
%IMF	1.02
RE	1.14

Ranking in the top one percent among non-parent

BW	205-DAY	RATIO	365-DAY	RATIO
89	774	108	1294	103

bulls for Weaning Weight EPD and in the top ten percent for Yearling Weight EPD, this high-performance prospect has an individual weaning ratio of 108 and an individual yearling ratio of 103 sired by the LaGrand featured sire WCC Special Design L309 who is also featured in the Genex/CRI A.I. stud.

32 LaGrand Special Design 3035

Birth Date: 8-16-2003 Bull +14641773 Tattoo: 3035

#Bon View New Design 878 #B/R New Design 036
WCC Special Design L309 Bon View Gammer 85
+13846942 N Bar Primrose 2424 #Emulation 31 (FX)
Primrose N Bar 9962

Performance	
BW	+3.9
WW	+50
YW	+86
MILK	+20

+GDAR SVF Russ 184B #GDAR Executive 727
Broken Arrow Roth MS RUSS805 +GDAR Forever Lady 719
13047367 Broken Arrow MS Traveler3262 E&B Stacker 190
QLC B3 Pearlstone X432C

Ultrasound	
%IMF	1.12
RE	1.13

A son of the popular WCC

BW	205-DAY	RATIO	365-DAY	RATIO
90	694	ET	1339	ET

Special Design L309 from the embryo program at LaGrand Angus Ranch produced from a donor dam with an impressive progeny IMF ratio of 107 on 27 head.



LAGRAND SPECIAL DESIGN 3029 - Lot 33

33 LaGrand Special Design 3029

Birth Date: 8-14-2003 Bull 14641764 Tattoo: 3029

#Bon View New Design 878 #B/R New Design 036
WCC Special Design L309 Bon View Gammer 85
+13846942 N Bar Primrose 2424 #Emulation 31 (FX)
Primrose N Bar 9962

Performance	
BW	+4.7
WW	+52
YW	+86
MILK	+22

#LF New Trend 4100 #VDAR New Trend 784
TC Peg 0004 #Lazy Four Lucy 003
+13722141 #TC Peg 9100 #+Leachman Prompter
TC Peg 6108

Ultrasound	
%IMF	1.02
RE	1.07

This summer yearling son of WCC Special Design L309

BW	205-DAY	RATIO	365-DAY	RATIO
95	724	103	1286	102

blends the Peg and Primrose families from a dam who is a full sister to a number of prominent champions descending from the famous All-American Grand Champion Cow TC Peg 9100.

A three-quarter brother sells as Lot 30.