

LAGRAND FUTURE DIRECTION SONS



LAGRAND FUTURE DIRECTION 3081 - Lot 130

Lot 130 LaGrand Future Direction 3081
 Birth Date: 9-11-2003 Bull +14641825 Tattoo: 3081

#GAR Precision 1680
 CA Future Direction 5321
 12493607 CA Miss Power Fix 308

#Tehama Bando 155
 9J9 GAR 856
 #+SAF Power Fix
 CA Lady Eight 1015

#TC Stockman
 TC Pride 8002
 +13083692 TC Pride 2007

This fall yearling son of the Genex/CRI ultrasound

BW	205-DAY	RATIO	365-DAY	RATIO
110	874	ET	N/A	N/A

leader, CA Future Direction 5321 was produced from a donor dam who is a past Atlantic National ROV Reserve Grand Champion Cow with a phenomenal progeny weaning ratio of 120 on three natural calves and a progeny yearling ratio of 118 on one head coupled with a progeny IMF ratio of 104 and a progeny ribeye ratio of 102 on 16 head.

A maternal sister weaned her first calf with a ratio of 120.

Lot 131 LaGrand Future Direction H417
 Birth Date: 1-4-2004 Bull +14741765 Tattoo: H417

#GAR Precision 1680
 CA Future Direction 5321
 12493607 CA Miss Power Fix 308

#Tehama Bando 155
 9J9 GAR 856
 #+SAF Power Fix
 CA Lady Eight 1015

#Famous 7001
 Roth TC Pride 0148
 13518303 +TC Pride 8002

#SAF Fame
 TK Karen 1369
 #TC Stockman
 TC Pride 2007

This fall yearling son of the Genex/CRI ultrasound

BW	205-DAY	RATIO	365-DAY	RATIO
80	676	ET	1146	ET

leader, CA Future Direction 5321 was produced from a donor dam who is a past Atlantic National ROV Reserve Grand Champion Cow with a phenomenal progeny weaning ratio of 120 on three natural calves and a progeny yearling ratio of 118 on one head coupled with a progeny IMF ratio of 104 and a progeny ribeye ratio of 102 on 16 head.

A maternal sister weaned her first calf with a ratio of 120.



TC PRIDE 8002 - The dam of Lot 130 and the granddam of Lot 131.



LAGRAND FUTURE DIRECTION 4159 - Lot 132

Lot 132 LaGrand Future Direction 4159
 Birth Date: 1-12-2004 Bull 14693141 Tattoo: 4159

#GAR Precision 1680
 CA Future Direction 5321
 12493607 CA Miss Power Fix 308

#Tehama Bando 155
 9J9 GAR 856
 #+SAF Power Fix
 CA Lady Eight 1015

#Summitcrest Stampede
 RA Eileenmere 7111
 #12985536 Tokach Eileenmere 5629

#N Bar Emulation EXT
 #Summitcrest Lass 152X
 #+JR Juice 2005
 Tokach Eileenmere 1169

This son of the Genex/CRI ultrasound leader CA

BW	205-DAY	RATIO	365-DAY	RATIO
99	729	102	1243	99

Future Direction 5321 was produced from the popular champion Roth TC Pride 0148 who is a maternal sister to Lot 130.

This bull is from the same family that produced TC Stockman 365.

Lot 133 LaGrand Future Direction 4227
 Birth Date: 1-18-2004 Bull 14693148 Tattoo: 4227

#GAR Precision 1680
 CA Future Direction 5321
 12493607 CA Miss Power Fix 308

#Tehama Bando 155
 9J9 GAR 856
 #+SAF Power Fix
 CA Lady Eight 1015

#Rito 3B17 of 0G10 Bando
 TC Erica Eileen 8001
 +13151612 TC Erica Eileen 0130

#Tehama Bando 155
 Rita 0G10 of 8A5 Rito 8E8
 #+Leachman Prompter
 TC Erica Eileen 6006

A son of the Genex/CRI ultrasound leader CA Future

BW	205-DAY	RATIO	365-DAY	RATIO
98	726	101	1243	99

Direction 5321 from a dam with a progeny weaning ratio of 107 and a progeny yearling ratio of 106 on four calves.

The granddam of this bull was the top-selling cow of a past TC sale and she is a full sister to TC Dividend 963.



ROTH TC PRIDE 0148 - The dam of Lot 131.

LAGRAND PRECISION BULLS

Lot 139 LaGrand E161 Precision H473

Birth Date: 2-5-2004 Bull +14744517 Tattoo: H473

BW	205-DAY	RATIO	365-DAY	RATIO
82	708	ET	1191	ET

Ultrasound	
%IMF	+1.10
RE	+1.44
FAT	+1.003
%RP	+1.69

Lot 140 LaGrand E161 Precision 4457

Birth Date: 2-22-2004 Bull +14704740 Tattoo: 4457

BW	205-DAY	RATIO	365-DAY	RATIO
98	681	ET	1220	ET

Ultrasound	
%IMF	+1.14
RE	+1.66
FAT	+1.010
%RP	+1.43

Lot 141 LaGrand E161 Precision H480

Birth Date: 3-3-2004 Bull +14744520 Tattoo: H480

#GAR Precision 1680
Twin Valley Precision E161 (FR)
#12346200 +WCC Blackcap C9 (R)

#Tehama Bando 155
9J9 GAR 856
#SS Traveler 6T6
Premier Blackcap 6276A (R)

#N Bar Emulation EXT
UI EXT Miss G087
#12956677 +Brost Burgess 043

#Emulation N Bar 5522
N Bar Primrose 2424
#Hoff Hi Spade SC 491
Partisover Burgess 527

An exciting trio of flush brothers by the now-deceased Genex/CRI Twin Valley Precision E161 from the same family that produced the Angus Sire Alliance Winner JLB Exacto 416.

The Pathfinder Dam of these bulls has an impressive progeny weaning ratio of 111 on five natural calves combined with progeny IMF and ultrasound ribeye ratios of 108 and 109 respectively on four head.

Lot 142 LaGrand Flattop 408

Birth Date: 1-10-2004 Bull 14765188 Tattoo: 408

#Twin Valley Precision E161 (FR)
KF Precision 361
13955434 KF Evergreen Erica 1069

#GAR Precision 1680
+WCC Blackcap C9 (R)
#Bushs Flashback 880
KF Evergreen Erica 973

#Famous 7001
Roth Enchantress 1374
13928088 Basin Enchantress 621H

#SAF Fame
TK Karen 1369
+Stevenson Rolling Thunder
#Basin Enchantress 3436

A son of the All-American Grand Champion Bull KF

Precision 361 produced from a dam who is a member of one of the all-time great flushes ever produced in the Roth and LaGrand programs.

The grandam of this bull is a Pathfinder Dam who produced a famous A.I. sire.

Lot 143 LaGrand Banjo 4299

Birth Date: 1-26-2004 Bull 14698264 Tattoo: 4299

#Twin Valley Precision E161 (FR)
KF Precision 361
13955434 KF Evergreen Erica 1069

#GAR Precision 1680
+WCC Blackcap C9 (R)
#Bushs Flashback 880
KF Evergreen Erica 973

Millcreek Diversity
Roth Miss Countess 1589
+13928302 #+Grubbs Miss Countess 252

#+GAR Sleep Easy 1009
Millcreek Travel Lass
#TC Dividend 963
DG Miss Countess 535

BW	205-DAY	RATIO	365-DAY	RATIO
82	704	98	1293	103

Performance	
BW	+4.1
WW	+48
YW	+85
MILK	+19

Ultrasound	
%IMF	+1.02
RE	+1.14
FAT	-1.007
%RP	-1.01



HYLINE PRIDE 265 - The \$50,000 valued dam of Lot 144.

Lot 144 LaGrand Midland 4965

Birth Date: 2-16-2004 Bull +14785044 Tattoo: 4965

BR Midland
13898124

#Twin Valley Precision E161 (FR)
BR Royal Lass 7036-19

#GAR Precision 1680
+WCC Blackcap C9 (R)
#+SAF Neutron
#SAF Royal Lass 7036

+Hyline SVF Traveler 0115
Hyline Pride 265
11778521 Hyline Pride 870

#Traveler 124 GDAR
#Pride of Hyline 7919
#Hyline Oscar 555
Hyline Pride 505

A special attraction - a maternal brother to Hyline Right

Time 338 who is a popular member of the Accelerated Genetics A.I. stud and proven high-performance sire.

This son of the high marbling leader BR Midland was produced from the \$50,000 valued Hyline Pride 265 who records a progeny weaning ratio of 111 on five natural calves and a progeny yearling ratio of 108 on three head coupled with a progeny IMF ratio of 105 and a progeny ultrasound ribeye ratio of 102 on 25 head.

BW	205-DAY	RATIO	365-DAY	RATIO
100	825	ET	1275	ET

Performance	
BW	+1.22
WW	+1.48
YW	+1.83
MILK	+1.25

Ultrasound	
%IMF	+1.45
RE	+1.82
%RP	+1.35



KF PRECISION 361 - The sire of Lots 142 and 143.



BR MIDLAND - The sire of Lot 144.

LAGRAND PRECISION J239 SONS



**LAGRAND J239
PRECISION 4285** - Lot 145



BON VIEW PRIDE 664 -
The \$100,000 grandam of Lot 145.



**LAGRAND J239
PRECISION 4258** - Lot 147



THOMAS PRIMROSE 9302
- The Pathfinder grandam of Lot 147.

Lot 145 LaGrand J239 Precision 4285

Birth Date: 1-25-2004 Bull 14682325 Tattoo: 4285

#Twin Valley Precision E161 (FR) #GAR Precision 1680
+WCC Blackcap C9 (R)
+13806971 N Bar Primrose 2424 #Emulation 31 (FX)
Primrose N Bar 9962

RP 3RD Bushwacker #BCC Bushwacker 41-93
Roth Pride 2215 LB Queen of Spades
+14143063 Bon View Pride 664 #+GAR Sleep Easy 1009
#Bon View Pride 1551

A grandson of the \$100,000
LaGrand featured donor

Bon View Pride 664 who is best known as the dam of Bon View New Design 1407.
This son of the LaGrand feature sire WCC Precision E161 J239 offers a royal herd sire pedigree.

BW	205-DAY	RATIO	365-DAY	RATIO
67	715	100	1269	101

Performance	
BW	-7
VW	+40
YW	+77
MILK	+24

Carcass	
CW	+12
MARB	+18
RE	+25
FAT	+0.18
%RP	+33

Ultrasonics	
%IMF	+25
RE	+18
%RP	+28

Lot 147 LaGrand J239 Precision 4258

Birth Date: 1-21-2004 Bull 14682272 Tattoo: 4258

#Twin Valley Precision E161 (FR) #GAR Precision 1680
+WCC Blackcap C9 (R)
+13806971 N Bar Primrose 2424 #Emulation 31 (FX)
Primrose N Bar 9962

#Connealy Dateline #DHD Traveler 6807
Lagrand Primrose 2116 #Eila Eila of Conanga
+14304284 #Thomas Primrose 9302 #AAR New Trend
Thomas Primrose 6172

An elite EPD herd sire
prospect with an individual

birth ratio of 97 combined with individual weaning and yearling ratios of 116 and 111 respectively along with an individual IMF ratio of 108 sired by the popular WCC Precision E161 J239 and produced as the first calf from a dam by Connealy Dateline. The Pathfinder grandam of this bull has an outstanding production record.

BW	205-DAY	RATIO	365-DAY	RATIO
79	831	116	1391	111

Performance	
BW	+18
VW	+48
YW	+83
MILK	+22

Carcass	
CW	+13
MARB	+10
RE	+30
FAT	+0.04
%RP	+19

Ultrasonics	
%IMF	+12
RE	+21
%RP	+0

Lot 146 LaGrand J239 Precision 4315

Birth Date: 1-28-2004 Bull 14682199 Tattoo: 4315

#Twin Valley Precision E161 (FR) #GAR Precision 1680
+WCC Blackcap C9 (R)
+13806971 N Bar Primrose 2424 #Emulation 31 (FX)
Primrose N Bar 9962

#Sitz Traveler 9929 #DHD Traveler 6807
Lagrand Beauty 2133 Sitz Everelda Entense 1137
+14318545 +VDAR Beauty 3005 #VDAR New Trend 315
VDAR Beauty 228

This bull stacks the noted
Genex/CRI sire WCC

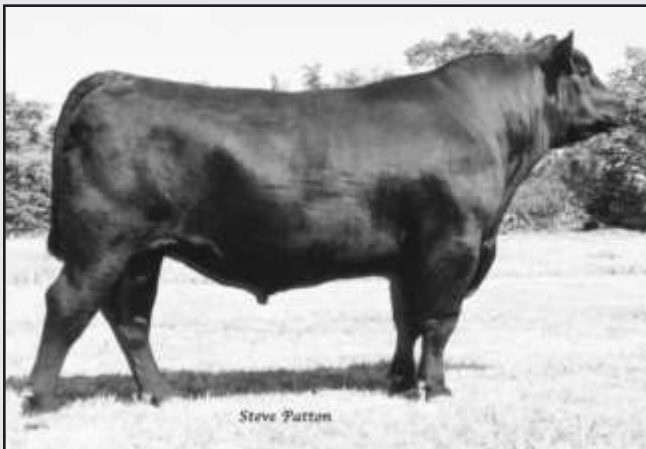
Precision E161 J239 and Sitz Traveler 9929 from the herd sire producing Beauty family.

BW	205-DAY	RATIO	365-DAY	RATIO
84	714	100	1252	100

Performance	
BW	+3.9
VW	+39
YW	+75
MILK	+20

Carcass	
CW	+13
MARB	+11
RE	+21
FAT	+0.04
%RP	+0

Ultrasonics	
%IMF	+35
RE	+10
%RP	-0.08



WCC PRECISION E161 J239 - Reference Sire J

Lot WCC Precision E161 J239

Birth Date: 9-29-2000 Bull +13806971 Tattoo: J239

#GAR Precision 1680 #Tehama Bando 155
Twin Valley Precision E161 (FR) 9J9 GAR 856
#12346200 +WCC Blackcap C9 (R) #SS Traveler 6T6
Premier Blackcap 6276A (R)

#Emulation 31 (FX) FCR Elation Lad 652
N Bar Primrose 2424 Miss Emulous 243
10474919 Primrose N Bar 9962 Lad 118K of JRS
#N Bar Primrose 5329

FOR REFERENCE ONLY.

This LaGrand herd sire is a featured member of the Genex/CRI A.I. stud where he joins his famous maternal brother WCC Special Design L309. This bull is the result of the royal blending of Twin Valley Precision E161 with the \$100,000 N Bar Primrose 2424 who is also the dam of the legendary N Bar Emulation EXT.

The progeny of this outstanding sire have met with excellent success.

Performance	
BW	+2.1
VW	+39
YW	+78
MILK	+21

Carcass	
CW	+18
MARB	+07
RE	+32
FAT	-0.05
%RP	+19

Ultrasonics	
%IMF	+28
RE	+38
FAT	+0.10
%RP	+38

LAGRAND PRECISION BULLS



SITZ EMMA E 1705 - The dam of Lot 148.



CHAMPION HILL PEG 1747 - The dam of Lots 151 and 151A.

Lot 148 LaGrand Exacto 4968

Birth Date: 2-3-2004 Bull +14775699 Tattoo: 4968

#GAR Precision 1680 #Tehama Bando 155
 JLB Exacto 416 9J9 GAR 856
 #12223258 +Brost Burgess 041 #Hoff Hi Spade SC 491
 Partisover Burgess 527

#DHD Traveler 6807 #QAS Traveler 23-4
 Sitz Emma E 1705 #Bemindful Maid DHD 0807
 12310508 Sitz Emma E 3003 Sitz Rito 7491
 Sitz Emma E 2517

This bull from the embryo program at LaGrand Angus Ranch is by the Angus Sire Alliance Winner JLB Exacto 416 from an outstanding donor dam who was bred at Sitz Angus Ranch in Montana with a progeny IMF ratio of 101 and a progeny ultrasound ribeye ratio of 103 on 28 head. Maternal siblings have highlighted past LaGrand sales to leading breeders.

BW	205-DAY	RATIO	365-DAY	RATIO
100	850	ET	1304	ET

Performance	
BW	+1.14
VW	+3.36
YW	+7.75
MILK	+2.23
Carcase	
CW	+1.14
MARB	+0.05
RE	+0.43
FAT	-1.007
%RP	+1.40
Ultrasound	
%IMF	+1.10
RE	+1.42
FAT	-1.013
%RP	+1.43

Lot 149 LaGrand Exacto 4118

Birth Date: 1-6-2004 Bull 14682237 Tattoo: 4118

#GAR Precision 1680 #Tehama Bando 155
 JLB Exacto 416 9J9 GAR 856
 #12223258 +Brost Burgess 041 #Hoff Hi Spade SC 491
 Partisover Burgess 527

Bon View Prospector 1933 #+R&J Prospector 341
 Bon View Dora 1596 Bon View Mo Barbara 389
 #12665046 Bon View Dora 904 Bon View Traveler 181
 Bon View Dora 1282

A balanced EPD son of the Angus Sire Alliance Winner JLB Exacto 416 who offers proven carcass and maternal genetics. This bull combines an individual birth ratio of 89 with individual weaning and yearling ratios of 105 and 112 respectively from a Pathfinder Dam with a progeny weaning ratio of 103 on seven calves and a progeny yearling ratio of 107 on six head from the same family that produced Bon View Bando 598.

BW	205-DAY	RATIO	365-DAY	RATIO
78	752	105	1405	112

Performance	
BW	+1.0
VW	+4.0
YW	+8.4
MILK	+2.4
Ultrasound	
%IMF	+1.21
RE	+1.28
FAT	+1.006
%RP	-1.25

Lot 150 LaGrand Exacto 4983

Birth Date: 2-12-2004 Bull +14775759 Tattoo: 4983

#GAR Precision 1680 #Tehama Bando 155
 JLB Exacto 416 9J9 GAR 856
 #12223258 +Brost Burgess 041 #Hoff Hi Spade SC 491
 Partisover Burgess 527

#+VDAR Lucys Boy #Traveler 1148 GDAR
 Amdahls Pride Lucy 536 +VDAR Pine Drive Lucy 5
 12835064 RK Miss Trend Pride 2 +SAF New Trend 315 0017
 RK Miss Amtrack Pride 7A

Another son of JLB Exacto 416 from the LaGrand embryo program.

The donor dam of this bull has a progeny weaning ratio of 103 on four natural calves combined with a progeny IMF ratio of 136 and a progeny ultrasound ribeye ratio of 108 on two head. Two maternal sisters post a collective progeny weaning ratio of 108.

BW	205-DAY	RATIO	365-DAY	RATIO
94	713	ET	1183	ET

Performance	
BW	+2.9
VW	+3.9
YW	+7.2
MILK	+2.8
Carcase	
CW	+1.15
MARB	+1.12
RE	+1.40
FAT	+1.012
%RP	+1.15
Ultrasound	
%IMF	+1.22
RE	+1.37
FAT	-1.010
%RP	+1.44

Lot 151 LaGrand Precision 4988

Birth Date: 3-10-2004 Bull +14787668 Tattoo: 4988

BW	205-DAY	RATIO	365-DAY	RATIO
86	675	ET	1139	ET

Ultrasound	
%IMF	+1.13
RE	+1.30
FAT	-1.003
%RP	+1.41

Lot 151A LaGrand Precision 4984

Birth Date: 3-5-2004 Bull +14787667 Tattoo: 4984

#Tehama Bando 155 #Band 234 of Ideal 3163
 GAR Precision 1680 Tehama Blackcap G373
 #11520398 9J9 GAR 856 #Rito 9J9 of B156 7T26
 Blackbird GAR 833

#LF New Trend 4100 #VDAR New Trend 784
 Champion Hill Peg 1747 #Lazy Four Lucy 003
 +13464510 #TC Peg 9100 #+Leachman Prompter
 TC Peg 6108

A pair of sons from the elite carcass sire GAR Precision

1680 from a donor dam who was a feature of a past Champion Hill sale and served as a foundation female at Kahn Cattle Company of Georgia before coming to LaGrand Angus Ranch and earning a progeny weaning ratio of 113 combined with a progeny IMF ratio of 109 on two head. The grandam is the All-American Grand Champion Cow TC Peg 9100.

BW	205-DAY	RATIO	365-DAY	RATIO
76	673	ET	1091	ET

Performance	
BW	+3.0
VW	+3.6
YW	+7.3
MILK	+2.3
Carcase	
CW	+1.16
MARB	+1.20
RE	+1.32
FAT	-1.005
%RP	+1.21
Ultrasound	
%IMF	+1.13
RE	+1.30
FAT	-1.003
%RP	+1.41

Lot K JLB Exacto 416

Birth Date: 1-22-1994 Bull #12223258 Tattoo: 416

#Tehama Bando 155 #Band 234 of Ideal 3163
 GAR Precision 1680 Tehama Blackcap G373
 #11520398 9J9 GAR 856 #Rito 9J9 of B156 7T26
 Blackbird GAR 833

#Hoff Hi Spade SC 491 #+R&J Spade 1204
 Brost Burgess 041 #Hoff Miss Scotch Cap 074
 +11409430 Partisover Burgess 527 #Pine Drive Big Sky
 Partisover Burgess 901

FOR REFERENCE ONLY.
 Featuring sons of this Angus Sire Alliance Winner and proven Pathfinder Sire who excels in carcass and maternal genetics.
 This proven sire combines GAR Precision 1680 with the productive Burgess family.

Performance	
BW	+3.3
VW	+4.2
YW	+8.1
MILK	+3.4
Carcase	
CW	+2.7
MARB	+0.7
RE	+0.75
FAT	-0.01
%RP	+0.56
Ultrasound	
%IMF	+1.13
RE	+0.58
FAT	-0.014
%RP	+0.66



JLB EXACTO 416 - Reference Sire K

LAGRAND PRECISION BULLS



SITZ EMMA E 1705 - The dam of Lot 148.



CHAMPION HILL PEG 1747 - The dam of Lots 151 and 151A.

Lot 148 LaGrand Exacto 4968

Birth Date: 2-3-2004 Bull +14775699 Tattoo: 4968
 #GAR Precision 1680 #Tehama Bando 155
 JLB Exacto 416 9J9 GAR 856
 #12223258 +Brost Burgess 041 #Hoff Hi Spade SC 491
 Partisover Burgess 527
 #DHD Traveler 6807 #QAS Traveler 23-4
 Sitz Emma E 1705 #Bemindful Maid DHD 0807
 12310508 Sitz Emma E 3003 Sitz Rito 7491
 Sitz Emma E 2517

This bull from the embryo program at LaGrand Angus Ranch is by the Angus Sire Alliance Winner JLB Exacto 416 from an outstanding donor dam who was bred at Sitz Angus Ranch in Montana with a progeny IMF ratio of 101 and a progeny ultrasound ribeye ratio of 103 on 28 head. Maternal siblings have highlighted past LaGrand sales to leading breeders.

BW	205-DAY	RATIO	365-DAY	RATIO
100	850	ET	1304	ET

Performance	
BW	+1.14
VW	+3.36
YW	+7.75
MILK	+2.23
Carcass	
CW	+1.14
MARB	+0.05
RE	+0.43
FAT	-1.007
%RP	+1.40
Ultrasound	
%IMF	+1.10
RE	+1.42
FAT	-1.013
%RP	+1.43

Lot 149 LaGrand Exacto 4118

Birth Date: 1-6-2004 Bull 14682237 Tattoo: 4118
 #GAR Precision 1680 #Tehama Bando 155
 JLB Exacto 416 9J9 GAR 856
 #12223258 +Brost Burgess 041 #Hoff Hi Spade SC 491
 Partisover Burgess 527
 Bon View Prospector 1933 #+R&J Prospector 341
 Bon View Dora 1596 Bon View Mo Barbara 389
 #12665046 Bon View Dora 904 Bon View Traveler 181
 Bon View Dora 1282

A balanced EPD son of the Angus Sire Alliance Winner JLB Exacto 416 who offers proven carcass and maternal genetics. This bull combines an individual birth ratio of 89 with individual weaning and yearling ratios of 105 and 112 respectively from a Pathfinder Dam with a progeny weaning ratio of 103 on seven calves and a progeny yearling ratio of 107 on six head from the same family that produced Bon View Bando 598.

BW	205-DAY	RATIO	365-DAY	RATIO
78	752	105	1405	112

Performance	
BW	+1.0
VW	+4.0
YW	+8.4
MILK	+2.4
Ultrasound	
%IMF	+1.21
RE	+1.28
FAT	+1.006
%RP	-1.25

Lot K JLB Exacto 416

Birth Date: 1-22-1994 Bull #12223258 Tattoo: 416
 #Tehama Bando 155 #Band 234 of Ideal 3163
 GAR Precision 1680 Tehama Blackcap G373
 #11520398 9J9 GAR 856 #Rito 9J9 of B156 7T26
 Blackbird GAR 833
 #Hoff Hi Spade SC 491 #+R&J Spade 1204
 Brost Burgess 041 #Hoff Miss Scotch Cap 074
 +11409430 Partisover Burgess 527 #Pine Drive Big Sky
 Partisover Burgess 901

FOR REFERENCE ONLY.
 Featuring sons of this Angus Sire Alliance Winner and proven Pathfinder Sire who excels in carcass and maternal genetics.
 This proven sire combines GAR Precision 1680 with the productive Burgess family.

Performance	
BW	+3.3
VW	+4.2
YW	+8.1
MILK	+3.4
Carcass	
CW	+2.7
MARB	+0.7
RE	+0.75
FAT	-0.01
%RP	+0.56
Ultrasound	
%IMF	+1.13
RE	+0.58
FAT	-0.14
%RP	+0.66

Lot 150 LaGrand Exacto 4983

Birth Date: 2-12-2004 Bull +14775759 Tattoo: 4983
 #GAR Precision 1680 #Tehama Bando 155
 JLB Exacto 416 9J9 GAR 856
 #12223258 +Brost Burgess 041 #Hoff Hi Spade SC 491
 Partisover Burgess 527
 #+VDAR Lucys Boy #Traveler 1148 GDAR
 Amdahls Pride Lucy 536 +VDAR Pine Drive Lucy 5
 12835064 RK Miss Trend Pride 2 +SAF New Trend 315 0017
 RK Miss Amtrack Pride 7A

Another son of JLB Exacto 416 from the LaGrand embryo program.

The donor dam of this bull has a progeny weaning ratio of 103 on four natural calves combined with a progeny IMF ratio of 136 and a progeny ultrasound ribeye ratio of 108 on two head. Two maternal sisters post a collective progeny weaning ratio of 108.

BW	205-DAY	RATIO	365-DAY	RATIO
94	713	ET	1183	ET

Performance	
BW	+2.9
VW	+3.9
YW	+7.2
MILK	+2.8
Carcass	
CW	+1.15
MARB	+1.12
RE	+1.40
FAT	+1.012
%RP	+1.15
Ultrasound	
%IMF	+1.22
RE	+1.37
FAT	-1.010
%RP	+1.44

Lot 151 LaGrand Precision 4988

Birth Date: 3-10-2004 Bull +14787668 Tattoo: 4988
 #GAR Precision 1680 #Tehama Bando 155
 JLB Exacto 416 9J9 GAR 856
 #12223258 +Brost Burgess 041 #Hoff Hi Spade SC 491
 Partisover Burgess 527

BW	205-DAY	RATIO	365-DAY	RATIO
86	675	ET	1139	ET

Ultrasound	
%IMF	+1.13
RE	+1.30
FAT	-1.003
%RP	+1.41

Lot 151A LaGrand Precision 4984

Birth Date: 3-5-2004 Bull +14787667 Tattoo: 4984
 #Tehama Bando 155 #Band 234 of Ideal 3163
 GAR Precision 1680 Tehama Blackcap G373
 #11520398 9J9 GAR 856 #Rito 9J9 of B156 7T26
 Blackbird GAR 833
 #LF New Trend 4100 #VDAR New Trend 784
 Champion Hill Peg 1747 #Lazy Four Lucy 003
 +13464510 #TC Peg 9100 #+Leachman Prompter
 TC Peg 6108

A pair of sons from the elite carcass sire GAR Precision 1680 from a donor dam who was a feature of a past Champion Hill sale and served as a foundation female at Kahn Cattle Company of Georgia before coming to LaGrand Angus Ranch and earning a progeny weaning ratio of 113 combined with a progeny IMF ratio of 109 on two head. The grandam is the All-American Grand Champion Cow TC Peg 9100.

BW	205-DAY	RATIO	365-DAY	RATIO
76	673	ET	1091	ET

Performance	
BW	+3.0
VW	+3.6
YW	+7.3
MILK	+2.3
Carcass	
CW	+1.16
MARB	+1.20
RE	+1.32
FAT	-1.005
%RP	+1.21
Ultrasound	
%IMF	+1.13
RE	+1.30
FAT	-1.003
%RP	+1.41



JLB EXACTO 416 - Reference Sire K

LAGRAND BANDO 598 SONS



BEAR MTN FOREVER LADY 601 - The dam of Lot 152.



BON VIEW GAMMER 233 - The dam of Lot 153.



BSS FOREVER LADY 9710 - The dam of Lot 154.



BON VIEW BANDO 598 - Reference Sire L

Lot 152 LaGrand 598 Bando 4906

Birth Date: 1-9-2004 Bull +14741741 Tattoo: 4906

#Tehama Bando 155 #Band 234 of Ideal 3163
Bon View Bando 598 Tehama Blackcap G373
#11104267 #Bon View Dora 56 #Voltage HK K142
#Bon View Dora 254

#PAPA Equator 2928 #+PAPA Power 096
Bear MTN Forever Lady 601 #PAPA Envious Blackbird 8849
+12527668 #Blackcap Lady 384 GDAR #QAS Traveler 23-4
Lady Forever 5150 GDAR

A son of the Pathfinder Sire
Bon View Bando 598 pro-

BW	205-DAY	RATIO	365-DAY	RATIO
80	712	ET	1216	ET

duced in the embryo program at LaGrand from the famous Bear Mtn Forever Lady 601 who is one of the all-time top-income-producing females in the LaGrand program with a progeny IMF ratio of 106 and a progeny ultrasound ribeye ratio of 102 on 12 head.

Maternal siblings include an impressive array of champions and top-sellers including Roth Forever Lady 2610, Roth Forever 2706, Roth Forever Lady 2715 and LaGrand 2617 among others.

Performance

BW	+2.3
WW	+4.0
YW	+7.7
MILK	+21

Carcass

CW	+2.0
MARB	+0.08
RE	+1.14
FAT	-0.018
%RP	+0.09

Ultrasound

%IMF	+1.14
RE	+1.16
FAT	-0.009
%RP	-0.05

Lot 153 LaGrand 598 Bando H459

Birth Date: 1-19-2004 Bull +14743571 Tattoo: H459

#Tehama Bando 155 #Band 234 of Ideal 3163
Bon View Bando 598 Tehama Blackcap G373
#11104267 #Bon View Dora 56 #Voltage HK K142
#Bon View Dora 254

#N Bar Emulation EXT #Emulation N Bar 5522
Bon View Gammer 233 N Bar Primrose 2424
11901123 Bon View Gammer 2409 #Hoff Esso SC 433 (R)
#Bon View Gammer 2374

This genetic treasure is a full
brother to the \$89,000 Bon

BW	205-DAY	RATIO	365-DAY	RATIO
80	706	ET	1280	ET

View Gammer 85 who is best known as the dam of Bon View New Design 878. Another full sister, Bon View Gammer 1056, has a \$90,000 valuation and still another full sister was the \$42,000 second top-selling cow of the 2004 Whitestone Sale while full brothers include the featured Lot 1 bull of the 2002 LaGrand Bull Sale to John Walters of Michigan and a feature of the 2003 LaGrand Bull Sale to Er-Lan-Del Angus of Missouri.

The dam of this bull is the \$70,000 Bon View Gammer 233 now featured at Hudgins Cattle Company.

Performance

BW	+1.7
WW	+4.2
YW	+7.5
MILK	+25

Carcass

CW	+1.8
MARB	+1.14
RE	+1.12
FAT	+0.002
%RP	-1.14

Ultrasound

%IMF	+2.0
RE	+2.0
FAT	+0.015
%RP	-1.17

Lot 154 LaGrand 598 Bando 4840

Birth Date: 2-25-2004 Bull +14815504 Tattoo: 4840

#Tehama Bando 155 #Band 234 of Ideal 3163
Bon View Bando 598 Tehama Blackcap G373
#11104267 #Bon View Dora 56 #Voltage HK K142
#Bon View Dora 254

#PAPA Durabull 9805 #Scotch Cap
BSS Forever Lady 9710 #Envious Blackbird DHD 3811
+13081037 +EF Forever Lady 5102 #Tehama Bando 155
+SVF Forever Lady 1120

A son of the established
Pathfinder Sire Bon View

BW	205-DAY	RATIO	365-DAY	RATIO
90	788	ET	1226	ET

Bando 598 from the famous family descending from SVF Forever Lady 1120. The donor dam of this bull balances a progeny birth ratio of 95 with progeny weaning and yearling ratios of 107 and 104 respectively along with progeny IMF and ultrasound ribeye ratios of 102 and 101 respectively on 15 head. Four maternal sisters post a collective progeny weaning ratio of 108.

Performance

BW	+1.8
WW	+4.1
YW	+7.9
MILK	+29

Carcass

CW	+1.13
MARB	+1.17
RE	+1.10
FAT	+0.003
%RP	-1.10

Ultrasound

%IMF	+0.06
RE	+1.16
FAT	+0
%RP	-1.23

Lot 155 Bon View Bando 598

Birth Date: 2-26-1988 Bull #11104267 Tattoo: 598

#Band 234 of Ideal 3163 #Band 602 of Ideal 928 72
Tehama Bando 155 Rito 149 of Ideal 443
#9891499 Tehama Blackcap G373 Tehama 72 Rito 330
Tehama Blackcap E475

#Voltage HK K142 #High Voltage
Bon View Dora 56 #Queen Elnora K48
#10792795 #Bon View Dora 254 #Premier Independence KN
Bon View Dora 1222

FOR REFERENCE ONLY.

Featuring sons of this established Pathfinder Sire who served as a long-time-featured member of the Genex/CRI A.I. stud.

This proven balanced-trait sire is best known as the sire of SAF 598 Bando 5175 and a long list of great females.

Performance

BW	+8
WW	+42
YW	+78
MILK	+25

Carcass

CW	+23
MARB	+13
RE	+11
FAT	-0.017
%RP	-0.01

Ultrasound

%IMF	+17
RE	+10
FAT	-0.001
%RP	-0.01

LAGRAND BANDOLIER SONS



STEVENSON PRIDE LADY 6368 - The Pathfinder Dam of Lots 155 and 156.



LAGRAND BANDOLIER 4023 - Lot 155

Lot 155 LaGrand Bandolier 4023

Birth Date: 1-5-2004 Bull +14700330 Tattoo: 4023

BW	205-DAY	RATIO	365-DAY	RATIO
92	733	ET	1245	ET

Ultrasound	
%IMF	+1.18
RE	+1.19
FAT	-1.002
%RP	+1.10

Lot 156 LaGrand Bandolier H431

Birth Date: 1-6-2004 Bull +14749062 Tattoo: H431

#Bon View Bando 598 #Tehama Bando 155
 #Bon View Dora 56
 SVF Bandolier #+GDAR Oscar 711
 12224884 SVF Primrose Lady 9446 #Primrose Lady 446 GDAR

#Basin Ambush 3905 (FR) #Paramont Ambush 2172
 Stevenson Pride Lady 6368 Basin Heather Bloom 48C (R)
 #13036393 Stevenson Pride Lady 4066 #Basin Rainmaker 2844
 +Stevenson Pride Lady 353D

BW	205-DAY	RATIO	365-DAY	RATIO
92	730	ET	1260	ET

Performance	
BW	+2.3
VW	+4.3
YW	+8.0
MILK	+2.9

Carcass	
CW	-1.5
MARB	+1.02
RE	-1.08
FAT	+1.011
%RP	-1.19

Ultrasound	
%IMF	+1.21
RE	+1.33
FAT	+1.011
%RP	+1.18



LAGRAND BANDOLIER H431 - Lot 156

This exciting pair of flush brothers from the embryo program at LaGrand Angus Ranch are sired by the rare and valuable SVF Bandolier from the \$42,000 Pathfinder Dam Stevenson Pride Lady 6368 who was the second top-selling cow of the 2004 LaGrand Fall Sale to Fluharty Farms LLC of Texas. The dam of these bulls combines a progeny birth ratio of 97 with a progeny weaning ratio of 107 and a progeny yearling ratio of 106 on four natural calves.

Maternal siblings to these bulls include a number of successful champions including Roth Holiday Paradox 1040 who was the \$15,000 second top-selling bull of the 2002 LaGrand Bull Sale, as well as the \$11,000 Roth Pride 2096, the popular champion LaGrand Pride Lady 3045 and LaGrand Pride Lady 3179, and LaGrand Pride Lady 4215 who sold one-half interest for \$11,500.

The sire of these bulls excels in combining growth, maternal and carcass genetics.

Lot M SVF Bandolier

Birth Date: 3-2-1994 Bull 12224884 Tattoo: 53D

#Tehama Bando 155 #Band 234 of Ideal 3163
 Bon View Bando 598 Tehama Blackcap G373
 #11104267 #Bon View Dora 56 #Voltage HK K142
 #Bon View Dora 254

#+GDAR Oscar 711 #Baldrige Oscar
 SVF Primrose Lady 9446 #LT Forever Lady 395 GDAR
 11307554 #Primrose Lady 446 GDAR #Traveler 124 GDAR
 Primrose Lady 992 GDAR

FOR REFERENCE ONLY.

Featuring sons of this rare and valuable sire who combines outstanding growth, maternal and carcass genetics.

This truly unique sire ranks in the top one percent among current sires for both Milk EPD and Ultrasound Ribeye Area EPD coupled with an Ultrasound Percent Retail Product EPD in the top four percent and a Yearling Weight EPD in the top ten percent.

Performance	
BW	+4.7
VW	+4.9
YW	+9.1
MILK	+3.3

Carcass	
CW	+8
MARB	+0.3
RE	-0.9
FAT	+0.011
%RP	-3.5

Ultrasound	
%IMF	+2.0
RE	+7.5
FAT	+0.02
%RP	+5.5



SVF BANDOLIER - Reference Sire M

LAGRAND FREIGHTLINER SONS



BON VIEW PRIDE 316 - The \$50,000 valued grandam of Lots 157 and 158.



LAGRAND FREIGHTLINER 3131 - Lot 160

157 LaGrand Freightliner 3127

Birth Date: 11-24-2003 Bull +14662344 Tattoo: 3127

BW	205-DAY	RATIO	365-DAY	RATIO
100	722	ET	1330	ET

Ultrasound	
%IMF	+1.18
RE	+1.13
FAT	+1.004
%RP	-1.33

158 LaGrand Freightliner 3130

Birth Date: 11-24-2003 Bull +14662347 Tattoo: 3130

BW	205-DAY	RATIO	365-DAY	RATIO
90	717	ET	1367	ET

Performance S D	
BW	+1.7 +3.5
WW	+4.6 +4.4
YW	+9.1 +8.8
MILK	+2.1 +1.8

Carass	
CW	+1.4
MARB	-1.09
RE	+1.23
FAT	+1.000
%RP	+1.09

Ultrasound	
%IMF	+1.07
RE	+1.25
FAT	+1.003
%RP	-1.22

#Bon View Bando 598
Connealy Freightliner
13026916 Joana Erica of Conanga

#Tehama Bando 155
#Bon View Dora 56
#Nichols Heavy Duty X100
Jarne Erica of Conanga

#PAPA Equator 2928
Roth Pride 2662
+14178617 Bon View Pride 316

#+PAPA Power 096
#PAPA Envious Blackbird 8849
#Bon View Emulation EXT 473
Bon View Pride 664

Featuring this pair of flush brothers from the embryo

mating by the Genex/CRI sire Connealy Freightliner from a donor dam who is the result of the successful mating of the high-performance Pathfinder Sire PAPA Equator 2928 to the \$50,000 valued Bon View Pride 316 who is in turn a maternal sister to Bon View New Design 1407 descending from the \$100,000 Bon View Pride 664.

159 LaGrand Freightliner 4081

Birth Date: 1-1-2004 Bull 14693127 Tattoo: 4081

BW	205-DAY	RATIO	365-DAY	RATIO
81	594	83	1152	92

Performance	
BW	+3.0
WW	+3.7
YW	+7.6
MILK	+1.8

Carass	
CW	+1.7
MARB	-1.12
RE	+1.16
FAT	+1.009
%RP	+1.01

Ultrasound	
%IMF	+1.08
RE	+1.16
FAT	+1.012
%RP	-1.08

#Bon View Bando 598
Connealy Freightliner
13026916 Joana Erica of Conanga

#Tehama Bando 155
#Bon View Dora 56
#Nichols Heavy Duty X100
Jarne Erica of Conanga

+GDAR SVF Russ 184B
Roth Echo 2622
+14143586 Diablo Echo 504

#GDAR Executive 727
+GDAR Forever Lady 719
#CH Stacker 7040
Diablo Echo 774

This son of the proven Genex/CRI sire Connealy Freightliner was produced from a dam by the rare growth sire GDAR SVF Russ 184B.

160 LaGrand Freightliner 3131

Birth Date: 11-29-2003 Bull +14662348 Tattoo: 3131

BW	205-DAY	RATIO	365-DAY	RATIO
82	641	ET	1147	ET

Ultrasound	
%IMF	+1.19
RE	+1.03
FAT	+1.016
%RP	-1.30

161 LaGrand Freightliner 3134

Birth Date: 12-6-2003 Bull +14662349 Tattoo: 3134

BW	205-DAY	RATIO	365-DAY	RATIO
96	738	ET	1183	ET

Performance	
BW	+1.25
WW	+1.44
YW	+1.84
MILK	+1.26

Carass	
CW	+1.4
MARB	+1.10
RE	+1.25
FAT	+1.004
%RP	+1.20

Ultrasound	
%IMF	+1.16
RE	+1.31
FAT	+1.011
%RP	+1.20

#Bon View Bando 598
Connealy Freightliner
13026916 Joana Erica of Conanga

#Tehama Bando 155
#Bon View Dora 56
#Nichols Heavy Duty X100
Jarne Erica of Conanga

#B/R New Design 323
Roth Wendy 2611
+14141825 +Double Bar Wendy 508-0100

#B/R New Design 036
B/R Ruby of Tiffany 155
#CH 054 Rito 0100
KMR Wendy 508

These high-performance sons of Connealy Freightliner

were produced in the embryo program from a donor dam who is the result of mating the longtime high marbling leader B/R New Design 323 to the LaGrand foundation donor Double Bar Wendy 508-0100.

162 LaGrand Freightliner 3124

Birth Date: 11-6-2003 Bull +14642093 Tattoo: 3124

BW	205-DAY	RATIO	365-DAY	RATIO
85	809	ET	1315	ET

Ultrasound	
%IMF	+1.10
RE	+1.20
FAT	-1.003
%RP	+1.21

163 LaGrand Freightliner H448

Birth Date: 1-10-2004 Bull +14741792 Tattoo: H448

BW	205-DAY	RATIO	365-DAY	RATIO
90	681	ET	1139	ET

Performance	
BW	+1.7
WW	+1.45
YW	+1.81
MILK	+1.25

Carass	
CW	+1.3
MARB	-1.03
RE	+1.07
FAT	+1.004
%RP	+1.0

Ultrasound	
%IMF	+1.10
RE	+1.20
FAT	+1.001
%RP	+1.26

#Bon View Bando 598
Connealy Freightliner
13026916 Joana Erica of Conanga

#Tehama Bando 155
#Bon View Dora 56
#Nichols Heavy Duty X100
Jarne Erica of Conanga

#TC Dividend 963
Grubbs Miss Countess 252
+#11888333 DG Miss Countess 535

#+Leachman Prompter
TC Erica Eileen 6006
#Pine Drive Big Sky
DG Miss Countess

Maternal brothers to a featured sire at Accelerated

Genetics from a Pathfinder Dam with a progeny weaning ratio of 116 on three natural calves and a progeny yearling ratio of 109 on two head coupled with a progeny IMF ratio of 106 on 42 head.

Twenty-five maternal sisters post a collective progeny weaning ratio of 103.



CONNELY FREIGHTLINER - Reference Sire N

Connealy Freightliner

Birth Date: 3-15-1997 Bull 13026916 Tattoo: 7549

BW	205-DAY	RATIO	365-DAY	RATIO
81	594	83	1152	92

Performance	
BW	+1.7
WW	+4.6
YW	+9.1
MILK	+2.1

Carass	
CW	+8
MARB	-1.3
RE	+1.7
FAT	+0.026
%RP	-1.5

Ultrasound	
%IMF	+1.11
RE	+2.24
FAT	+0.016
%RP	+0

#Tehama Bando 155
Band 234 of Ideal 3163
Tehama Blackcap G373
#Voltage HK K142
#Bon View Dora 254

#Nichols Heavy Duty X100
Nichols Super Systems R43
Nichols Miss Barbara U238
#Scotch Cap
Jara Erica of Conanga

Joana Erica of Conanga
12015525 Jarne Erica of Conanga

FOR REFERENCE ONLY.

Featuring sons of this proven Genex/CRI sire who has a proven combination of moderate birth and balanced performance genetics with one of the highest Scrotal EPDs of the entire Angus breed.

This son of Bon View Bando 598 was bred in the Connealy herd in Nebraska.

FREIGHTLINER SONS

Lot 164 LaGrand Freightliner 4077

Birth Date: 1-2-2004 Bull 14693126 Tattoo: 4077

#Bon View Bando 598
Connealy Freightliner
13026916 Joana Erica of Conanga

#Tehama Bando 155
#Bon View Dora 56
#Nichols Heavy Duty X100
Jarne Erica of Conanga

#Rockn D Ambush 1531
Roth Travett 2768
+14138309 Sodak Travett 3040

#Paramont Ambush 2172
MS Blackcap Band of RD 1301
#DHD Traveler 6807
Sodak Paula 1010

A low birth and high yearling son of Connealy

BW	205-DAY	RATIO	365-DAY	RATIO
64	680	95	1334	106

Freightliner from a dam by the elite carcass sire Rockn D Ambush 1531.

The dam of this bull was produced in the embryo program at LaGrand Angus Ranch.

Performance	
BW	-3
VW	+43
YW	+85
MILK	+18
Carcass	
CW	+4
MARB	+0.06
RE	+22
FAT	-0.07
%RP	+26
Ultrasound	
%IMF	+16
RE	+40
FAT	-0.06
%RP	+13

Lot 165 LaGrand Freightliner 4132

Birth Date: 1-7-2004 Bull 14693137 Tattoo: 4132

#Bon View Bando 598
Connealy Freightliner
13026916 Joana Erica of Conanga

#Tehama Bando 155
#Bon View Dora 56
#Nichols Heavy Duty X100
Jarne Erica of Conanga

#+Double Bar Rogue
TOF Idessa 366 155
13325120 Twin Oaks Idessa 1413

#CH 054 Rito 0100
KMR Wendy 508
#Premier Independence KN
Twin Oaks Idessa 8191

This high-performing son of Connealy Freightliner has

BW	205-DAY	RATIO	365-DAY	RATIO
101	761	113	1153	104

an individual weaning ratio of 113 and an individual yearling ratio of 104.

The dam of this bull is a member of the outstanding Twin Oaks herd unit and LaGrand Angus Ranch featuring the genetics of Double Bar Rogue.

Performance	
BW	+3.5
VW	+42
YW	+76
MILK	+18
Carcass	
CW	+8
MARB	+0.04
RE	+0.09
FAT	+0.008
%RP	-1.07
Ultrasound	
%IMF	+0.09
RE	+14
FAT	+0.003
%RP	+0.06

Lot 166 LaGrand Freightliner 4046

Birth Date: 1-8-2004 Bull 14693121 Tattoo: 4046

#Bon View Bando 598
Connealy Freightliner
13026916 Joana Erica of Conanga

#Tehama Bando 155
#Bon View Dora 56
#Nichols Heavy Duty X100
Jarne Erica of Conanga

Connealy Forefront
Roth Rosella Eileenmere 2779
+14137159 CW Rosella Eileenmere 623

#Connealy Frontline
Eileen Heartland Conanga6443
Basin Sensation 259D
Rosella Eileenmere 421

A blending of the noted sires Connealy Freightliner and Connealy Forefront.

BW	205-DAY	RATIO	365-DAY	RATIO
64	802	112	1210	96

This bull has a modest individual birth ratio of 80 combined with an individual weaning ratio of 112 produced as the first calf who is a product of the embryo program at LaGrand Angus Ranch.

Performance	
BW	-5
VW	+53
YW	+87
MILK	+23
Carcass	
CW	+4
MARB	-0.08
RE	+10
FAT	+0.009
%RP	+0.07
Ultrasound	
%IMF	+0.07
RE	+21
FAT	+0.021
%RP	-1.03

Lot 167 LaGrand Freightliner 4055

Birth Date: 1-8-2004 Bull 14693124 Tattoo: 4055

#Bon View Bando 598
Connealy Freightliner
13026916 Joana Erica of Conanga

#Tehama Bando 155
#Bon View Dora 56
#Nichols Heavy Duty X100
Jarne Erica of Conanga

#JLB Exacto 416
Roth Blackbird 2713
+14138298 Vaf Vantage Blackbird 692

#GAR Precision 1680
+Brost Burgess 041
SVF Bandler
+Ponderosa Blackbird 922

Another son of Connealy Freightliner produced from a two-year-old dam who is a product of the embryo program at LaGrand Angus Ranch.

BW	205-DAY	RATIO	365-DAY	RATIO
78	614	86	1238	99

This bull is from the noted Blackbird family.

Performance	
BW	+2.0
VW	+36
YW	+81
MILK	+23
Carcass	
CW	+12
MARB	-0.05
RE	+27
FAT	+0.014
%RP	+0.02
Ultrasound	
%IMF	+0.07
RE	+57
FAT	+0.006
%RP	+5.00

BANDO 1394 SONS



LAGRAND 1394 BANDO 4128 - Lot 168

Lot 168 LaGrand 1394 Bando 4128

Birth Date: 1-7-2004 Bull 14693136 Tattoo: 4128

#Bon View Bando 598
Bon View Bando 1394
12130262 Bon View Erianna 131

#Tehama Bando 155
#Bon View Dora 56
Bon View Paragon 2108
Bon View Erianna 259

#TC Stockman 365
IAR 365 Stockman Emul 5150
#13609797 Sioux Queen 5522 of Iar 515

#TC Stockman
TC Pride 0014
#Emulation N Bar 5522
#Traveler Queen of IAR 350

A son of the proven

BW	205-DAY	RATIO	365-DAY	RATIO
96	771	108	1401	112

Genex/CRI Bon View Bando

1394 who has been used extensively in the LaGrand breeding program.

This bull has individual weaning and yearling ratios of 108 and 112 respectively combined with an individual IMF ratio of 101 and an individual ultrasound ribeye ratio of 126 from a Pathfinder Dam who records a progeny weaning ratio of 109 on three calves.

Performance	
BW	+3.5
VW	+42
YW	+81
MILK	+19
Carcass	
CW	+13
MARB	+0.25
RE	+21
FAT	-0.023
%RP	+0.31
Ultrasound	
%IMF	+0.06
RE	+57
FAT	-0.014
%RP	+5.52

Lot 169 LaGrand 1394 Bando 4256

Birth Date: 1-21-2004 Bull 14693152 Tattoo: 4256

#Bon View Bando 598
Bon View Bando 1394
12130262 Bon View Erianna 131

#Tehama Bando 155
#Bon View Dora 56
Bon View Paragon 2108
Bon View Erianna 259

Roths Millcreek Unique
Roth Erica 1592
+13927260 DF Erica 4113

White Oak Precise 6002
#Mill Creek Karen
#GDAR Traveler 71
DF Erica 1112

The result of the successful blending of Bon View

BW	205-DAY	RATIO	365-DAY	RATIO
92	641	90	1150	92

Bando 1394 and Roth's Millcreek Unique.

The dam of this bull is a product of the embryo program at LaGrand descending from DF Erica 4113.

Performance	
BW	+2.8
VW	+32
YW	+64
MILK	+14
Carcass	
CW	+7
MARB	+0.29
RE	+14
FAT	-0.014
%RP	+0.22
Ultrasound	
%IMF	+0.20
RE	+21
FAT	+0
%RP	+0



BON VIEW BANDO 1394 - The sire of Lots 168 and 169.

LAGRAND RIGHT TIME 338 SONS



LAGRAND 338 RIGHT TIME 4018 - Lot 170

Lot 170 LaGrand 338 Right Time 4018

Birth Date: 1-4-2004 Bull 14682063 Tattoo: 4018

#+Leachman Right Time
Hyline Right Time 338
13058662 Hyline Pride 265

Vermilion Dateline 7078
Lagrand Beauty 2042
14306394 +North Fork Beauty 8175

#N Bar Emulation EXT
Leachman Erica 0025
+Hyline SVF Traveler 0115
Hyline Pride 870

#Connealy Dateline
#Vermilion Blackbird 5044
#+VAR Gateway 4101
+VDAR Beauty 3005

Performance	
BW	+4.7
VW	+70
YW	+118
MILK	+26

Carass	
CW	+2
MARB	+0.00
RE	+0.03
FAT	+0.007
%RP	-1.09

Maternal	
%IMF	+0
RE	+0.02
%RP	-1.16

BW	205-DAY	RATIO	365-DAY	RATIO
86	937	131	1577	119

NATIONAL WESTERN BULL.

Ranking in the top one per-

cent among non-parent bulls for both Weaning Weight EPD and Yearling Weight EPD, this massive high-performance bull has been a special favorite of many and earned a phenomenal individual weaning ratio of 131 and an individual yearling ratio of 119 as the first calf from a dam by the high-performance sire known as VRD. This bull is from the herd sire producing Beauty family.

Lot 171 LaGrand 338 Right Time 4112

Birth Date: 1-4-2004 Bull 14693134 Tattoo: 4112

#+Leachman Right Time
Hyline Right Time 338
13058662 Hyline Pride 265

#DHD Traveler 6807
Circle A Barbara Bell 5059
+12350180 Oneills Barbara Bell 85

#N Bar Emulation EXT
Leachman Erica 0025
+Hyline SVF Traveler 0115
Hyline Pride 870

#QAS Traveler 23-4
#Bemindful Maid DHD 0807
#+Leachman Prompter
Oneills Barbara Bell 63

Performance	
BW	+3.8
VW	+46
YW	+86
MILK	+18

Carass	
CW	+4
MARB	+0.03
RE	+0.04
FAT	-0.005
%RP	-1.04

Maternal	
%IMF	-1.08
RE	+1.07
%RP	-1.020

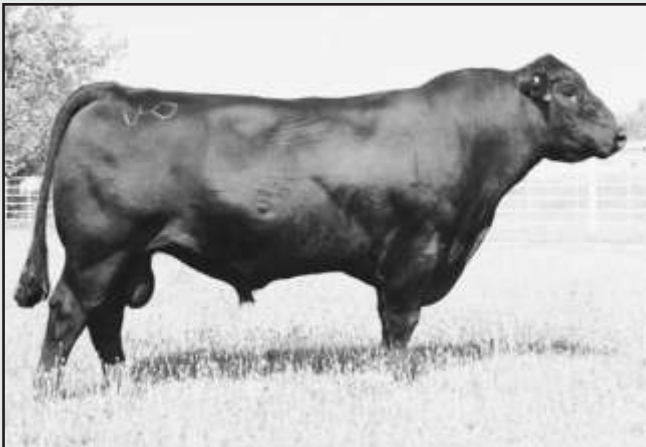
BW	205-DAY	RATIO	365-DAY	RATIO
N/A	705	98	1308	104

A balanced EPD herd sire

prospect by the popular

high-performance sire Hyline Right Time 338 who is a featured member of the Accelerated Genetics A.I. stud.

This bull was produced from a dam with a progeny weaning ratio of 102 on six calves from the noted Barbara Bell family.



HYLINE RIGHT TIME 338 - Reference Sire 0

Lot 0 Hyline Right Time 338

Birth Date: 1-29-1998 Bull 13058662 Tattoo: 338

#N Bar Emulation EXT
Leachman Right Time
+11750711 Leachman Erica 0025

+Hyline SVF Traveler 0115
Hyline Pride 265
11778521 Hyline Pride 870

#Emulation N Bar 5522
N Bar Primrose 2424
#Tehama Bando 155
Leachman Erica 8058

#Traveler 124 GDAR
#Pride of Hyline 7919
#Hyline Oscar 555
Hyline Pride 505

Performance	
BW	+3.5
VW	+62
YW	+111
MILK	+22

Carass	
CW	+2
MARB	-0.01
RE	+0.00
FAT	+0.004
%RP	-1.0

Maternal	
%IMF	+0.16
RE	+0.40
FAT	+0.005
%RP	+1.4

FOR REFERENCE ONLY.

Featuring sons of this popular high-performance sire who is a featured member of the Accelerated Genetics A.I. stud ranking in the top one percent among current sires for both Weaning Weight EPD and Yearling Weight EPD.

This proven sire has established himself as one of the best breeding sons of the \$60,000 now-deceased Pathfinder Sire Leachman Right Time from the \$50,000 valued Hyline Pride 265.

LAGRAND RIGHT TIME 338 SONS



LAGRAND 338 RIGHT TIME 4145 - Lot 172

Lot 172 LaGrand 338 Right Time 4145

Birth Date: 1-9-2004 Bull 14693138 Tattoo: 4145

#+Leachman Right Time
Hyline Right Time 338
13058662 Hyline Pride 265

#N Bar Emulation EXT
Leachman Erica 0025
+Hyline SVF Traveler 0115
Hyline Pride 870

#Traveler 124 GDAR
North Fork Precious Memories
+14052782 #Miss Wix 098 of Mc Cumber

#QAS Traveler 23-4
Rachel Rito 813 GDAR
054 PJM 1438
#Miss Wix 365 of Mc Cumber

NATIONAL WESTERN BULL.

This son of the popular high-performance sire Hyline Right Time 338 blends the herd sire producing Miss Wix, Rachel and Pride families. This bull earned an individual weaning ratio of 110 from a dam with progeny weaning and yearling ratios of 106 and 105 respectively on two calves by the rare Pathfinder Sire Traveler 124 GDAR, descending from a grandam who is a Pathfinder Dam backed by multiple generations of Pathfinder Dams.

BW	205-DAY	RATIO	365-DAY	RATIO
97	790	110	1344	101

Performance	
BW	+4.7
WW	+53
YW	+90
MILK	+27

Carcass	
CW	+3
MARB	+0.01
RE	+0.08
FAT	+0.006
%RP	-0.01

Ultrason	
%IMF	+0.05
RE	+0.41
FAT	+0.014
%RP	+0.19

Lot 175 LaGrand 338 Right Time 4030

Birth Date: 1-6-2004 Bull 14682078 Tattoo: 4030

#+Leachman Right Time
Hyline Right Time 338
13058662 Hyline Pride 265

#N Bar Emulation EXT
Leachman Erica 0025
+Hyline SVF Traveler 0115
Hyline Pride 870

#AAR New Trend
La Grand Polly83M of Oakhill
+14172713 +VDAR Polly 4027

#VDAR Shoshone 548
Donna AAR 74
#VDAR Rito 953
VDAR Polly 215

This grandson of VDAR Polly 4027 is sired by Hyline

Right Time 338 and is a three-quarter brother to Lots 173 and 174. This bull has an individual birth ratio of 92 coupled with an individual weaning ratio of 110 as his dam's first calf.

BW	205-DAY	RATIO	365-DAY	RATIO
74	788	110	1271	101

Performance	
BW	+2.1
WW	+50
YW	+87
MILK	+28

Carcass	
CW	+1
MARB	+0.06
RE	+0.05
FAT	-0.001
%RP	+0.01

Ultrason	
%IMF	+0.02
RE	+0.28
FAT	-0.002
%RP	+0.16

Lot 173 LaGrand 338 Right Time 4296

Birth Date: 1-26-2004 Bull +14693158 Tattoo: 4296

BW	205-DAY	RATIO	365-DAY	RATIO
91	568	ET	1222	ET

Ultrason	
%IMF	+0.20
RE	+0.27
FAT	+0.013
%RP	-0.08

Lot 174 LaGrand 338 Right Time 4312

Birth Date: 1-28-2004 Bull +14693162 Tattoo: 4312

#+Leachman Right Time
Hyline Right Time 338
13058662 Hyline Pride 265

#N Bar Emulation EXT
Leachman Erica 0025
+Hyline SVF Traveler 0115
Hyline Pride 870

#Traveler 124 GDAR
Roth Polly 0380
+13782131 +VDAR Polly 4027

#QAS Traveler 23-4
Rachel Rito 813 GDAR
#VDAR Rito 953
VDAR Polly 215

These sons of the popular Hyline Right Time 338 are

maternal brothers to featured bulls in this sale from the noted Polly family. The donor dam of these bulls has a progeny IMF ratio of 104 on four head.

BW	205-DAY	RATIO	365-DAY	RATIO
96	666	ET	1316	ET

Performance	
BW	+2.8
WW	+47
YW	+88
MILK	+26

Carcass	
CW	+0
MARB	+0.04
RE	+0.05
FAT	+0.001
%RP	+0.03

Ultrason	
%IMF	+0.14
RE	+0.28
FAT	+0.003
%RP	-0.07



VDAR POLLY 4027 - The grandam of Lots 173, 174 and 175.

LAGRAND RIGHT TIME 338 SONS



LAGRAND 338 RIGHT TIME 4166 - Lot 176



LAGRAND FOREVER 4861 - Full sister to Lot 178.

Lot 176 LaGrand 338 Right Time 4166

Birth Date: 1-12-2004 Bull 14693143 Tattoo: 4166

#+Leachman Right Time
Hyline Right Time 338
13058662 Hyline Pride 265

#N Bar Emulation EXT
Leachman Erica 0025
+Hyline SVF Traveler 0115
Hyline Pride 870

#Famous 7001
Roth Ruth 1202
13841515 Andora Ruth 584

#SAF Fame
TK Karen 1369
#Bon View Bando 598
Andora Ruth 30

This son of the popular high-performance sire Hyline

Right Time 338 has individual weaning and yearling ratios of 105 and 102 respectively from a dam by Famous 7001 with a progeny weaning ratio of 105 on two calves.

BW	205-DAY	RATIO	365-DAY	RATIO
86	750	105	1276	102

Performance	
BW	+3.0
YW	+49
MILK	+87

Carass	
CW	+1.8
MARB	+1.11
RE	+1.09
FAT	+1.000
%RP	+1.01

Ultrason	
%IMF	+1.07
RE	+1.12

Ultrason	
FAT	+1.018
%RP	+1.13

Lot 178 LaGrand 338 Right Time 4837

Birth Date: 3-16-2004 Bull +14815499 Tattoo: 4837

#+Leachman Right Time
Hyline Right Time 338
13058662 Hyline Pride 265

#N Bar Emulation EXT
Leachman Erica 0025
+Hyline SVF Traveler 0115
Hyline Pride 870

#VDAR New Trend 315
Jolly R Forever 117E
+12327588 +Jolly R Forever 2008

#AAR New Trend
#VDAR Lucy 704
#Candolier Forever 376
MG S Black Diamond

A flush brother to a featured heifer in the 2005 National

Western Foundation Female Sale sired by Hyline Right Time 338 from a donor dam with a progeny weaning ratio of 117 and a progeny yearling ratio of 109 on five natural calves.

The grandam is a flush sister to JR Juice 2005.

BW	205-DAY	RATIO	365-DAY	RATIO
95	832	ET	1339	ET

Performance	
BW	+3.9
YW	+48
MILK	+29

Carass	
CW	+1.2
MARB	+1.11
RE	+1.04
FAT	+1.014
%RP	+1.24

Ultrason	
%IMF	+1.11
RE	+1.33

Ultrason	
FAT	+1.006
%RP	+1.09

Lot 177 LaGrand 338 Right Time 4188

Birth Date: 1-16-2004 Bull 14693146 Tattoo: 4188

#+Leachman Right Time
Hyline Right Time 338
13058662 Hyline Pride 265

#N Bar Emulation EXT
Leachman Erica 0025
+Hyline SVF Traveler 0115
Hyline Pride 870

#SAF Fame
North Fork Rita 34
+13821283 +GAR Scotch Cap 509

#Minerts Fortune 2000
#+SAF Royal Lass 1027
#Scotch Cap
Rita 5H11 of 1B14 Rito 9J9

A son of Hyline Right Time 338 from the herd sire producing Rita family ranking in the top three percent among non-parent bulls for Yearling Weight EPD and in the top four percent for Weaning Weight EPD.

The dam of this bull has a progeny weaning ratio of 108 and a progeny yearling ratio of 110 on two calves and she is a maternal sister to the rare GAR EXT 4344.

BW	205-DAY	RATIO	365-DAY	RATIO
88	686	96	1310	104

Performance	
BW	+3.6
YW	+51
MILK	+94

Carass	
CW	+1.4
MARB	+1.11
RE	+1.12
FAT	+1.008
%RP	+1.0

Ultrason	
%IMF	+1.0
RE	+1.38

Ultrason	
FAT	+1.006
%RP	+1.01

Lot 179 LaGrand 338 Right Time 4222

Birth Date: 1-18-2004 Bull 14693147 Tattoo: 4222

#+Leachman Right Time
Hyline Right Time 338
13058662 Hyline Pride 265

#N Bar Emulation EXT
Leachman Erica 0025
+Hyline SVF Traveler 0115
Hyline Pride 870

+Rocky Mt Vision 708
Rocky Mt Lass 934
13954039 Rocky Mt Lass 716

#+VDAR Vision 243
VDAR Lucy 231
#DHD Traveler 6807
+Vintage Royal Lass 1306

This son of Hyline Right Time 338 is from the herd sire producing Lass family descending from the legendary Leachman Lass 1004.

The sire of this bull ranks in the top one percent for both Weaning Weight EPD and Yearling Weight EPD.

BW	205-DAY	RATIO	365-DAY	RATIO
104	718	100	1241	98

Performance	
BW	+5.2
YW	+50
MILK	+89

Carass	
CW	+1.4
MARB	+1.11
RE	+1.12
FAT	+1.008
%RP	+1.0

Ultrason	
%IMF	+1.07
RE	+1.21

Ultrason	
FAT	+1.001
%RP	+1.09



LAGRAND 338 RIGHT TIME 4445 - Lot 180

Lot 180 LaGrand 338 Right Time 4445

Birth Date: 2-19-2004 Bull 14682077 Tattoo: 4445

#+Leachman Right Time
Hyline Right Time 338
13058662 Hyline Pride 265

#N Bar Emulation EXT
Leachman Erica 0025
+Hyline SVF Traveler 0115
Hyline Pride 870

#Famous 7001
Roth Miss Countess 1590
+13927258 #+Grubbs Miss Countess 252

#SAF Fame
TK Karen 1369
#TC Dividend 963
DG Miss Countess 535

This son of the popular high-performance sire Hyline

Right Time 338 was produced from a dam by the now-deceased champion Famous 7001.

The dam of this bull has a progeny weaning ratio of 104 on two calves and she is a maternal sister to a noted A.I. sire descending from a Pathfinder grandam.

BW	205-DAY	RATIO	365-DAY	RATIO
108	766	106	1267	99

Performance	
BW	+5.5
YW	+53
MILK	+91

Carass	
CW	+1.6
MARB	+1.10
RE	+1.07
FAT	+1.000
%RP	+1.0

Ultrason	
%IMF	+1.16
RE	+1.26

Ultrason	
FAT	+1.004
%RP	+1.35

RIGHT TIME 338 SONS



BON VIEW PRIDE 316 - The \$50,000 valued grandam of Lots 181, 182 and 183.

Lot 181 LaGrand 338 Right Time 4352
 Birth Date: 2-2-2004 Bull +14693166 Tattoo: 4352

BW	205-DAY	RATIO	365-DAY	RATIO
90	739	ET	1389	ET

Ultrasound	
%IMF	+1.16
RE	+1.22
FAT	+1.010
%RP	-1.35

Lot 182 LaGrand 338 Right Time 4368
 Birth Date: 2-6-2004 Bull +14693170 Tattoo: 4368

BW	205-DAY	RATIO	365-DAY	RATIO
105	619	ET	1147	ET

Ultrasound	
%IMF	+1.09
RE	-1.05
FAT	-1.006
%RP	-1.11

Lot 183 LaGrand 339 Right Time 4987
 Birth Date: 3-2-2004 Bull +14775658 Tattoo: 4987

Performance S	
BW	+3.5 +3.5
WW	+62 +44
YW	+111 +88
MILK	+22 +18

#+Leachman Right Time
 Hyline Right Time 338
 13058662 Hyline Pride 265

#N Bar Emulation EXT
 Leachman Erica 0025
 +Hyline SVF Traveler 0115
 Hyline Pride 870

Carass	
CW	+1.11
MARB	-1.03
RE	+1.14
FAT	-1.011
%RP	+1.12

#PAPA Equator 2928
 Roth Pride 2662
 +14178617 Bon View Pride 316

#+PAPA Power 096
 #PAPA Envious Blackbird 8849
 #Bon View Emulation EXT 473
 Bon View Pride 664

Ultrasound	
%IMF	+1.20
RE	+1.07
FAT	-1.002
%RP	-1.21

The result of a successful embryo flush by the high-performance sire Hyline Right Time 338 from a dam who is the result of mating the high-performance Pathfinder Sire PAPA Equator 2928 to the \$50,000 valued Bon View Pride 316.

The \$100,000 third dam of these bulls is best known as the dam of Bon View New Design 1407.

Lot 184 LaGrand 338 Right Time 4357
 Birth Date: 2-4-2004 Bull +14693167 Tattoo: 4357

BW	205-DAY	RATIO	365-DAY	RATIO
99	728	ET	1317	ET

Ultrasound	
%IMF	+1.16
RE	+1.08
FAT	+1.008
%RP	-1.32

Lot 185 LaGrand 338 Right Time 4369
 Birth Date: 2-6-2004 Bull +14693171 Tattoo: 4369

BW	205-DAY	RATIO	365-DAY	RATIO
102	761	ET	1340	ET

Performance S	
BW	+3.9
WW	+55
YW	+102
MILK	+24

#+Leachman Right Time
 Hyline Right Time 338
 13058662 Hyline Pride 265

#N Bar Emulation EXT
 Leachman Erica 0025
 +Hyline SVF Traveler 0115
 Hyline Pride 870

Carass	
CW	+1.2
MARB	-1.05
RE	+1.02
FAT	+1.003
%RP	-1.05

+GDAR SVF Russ 184B
 ALC Miss Traveler 15H
 +13340744 +ALC Miss Traveler 102G

#GDAR Executive 727
 +GDAR Forever Lady 719
 #Traveler 1148 GDAR
 +Car Don Miss Traveler B226

Ultrasound	
%IMF	+1.18
RE	+1.26
FAT	+1.005
%RP	-1.16

Ranking in the top one percent among non-parent bulls for both Weaning Weight EPD and Yearling Weight EPD, these high-performance prospects are sired by Hyline Right Time 338 from the herd sire producing Evergreen family.

The donor dam of these bulls has a progeny weaning ratio of 108 and a progeny yearling ratio of 107 on three natural calves coupled with a progeny IMF ratio of 111 on five head.

Four maternal sisters post a collective progeny weaning ratio of 104.

RIGHT TIME SONS



LAGRAND RIGHT TIME 4318 - Lot 186

Lot 186 LaGrand Right Time 4318
 Birth Date: 1-28-2004 Bull 14693163 Tattoo: 4318

#N Bar Emulation EXT
 Leachman Right Time
 +11750711 Leachman Erica 0025

#Emulation N Bar 5522
 N Bar Primrose 2424
 #Tehama Bando 155
 Leachman Erica 8058

Performance S	
BW	+6
WW	+36
YW	+77
MILK	+21

Carass	
CW	+1.11
MARB	-1.03
RE	+1.13
FAT	+1.005
%RP	-1.03

#Bon View Bando 598
 Roth Miss Pride Ever 1593
 +13928303 +WCC Miss Pride Ever 284

#Tehama Bando 155
 #Bon View Dora 56
 #GDAR Executive 727
 FAF Miss Pride Ever 138

Ultrasound	
%IMF	-1.07
RE	+1.13
FAT	+1.010
%RP	-1.34

This son of the \$160,000
 Pathfinder Sire Leachman

BW	205-DAY	RATIO	365-DAY	RATIO
76	625	87	1259	100

Right Time was produced from a dam by the balanced-trait Pathfinder Sire Bon View Bando 598.

The dam of this bull came to LaGrand Angus Ranch as a \$10,000 feature of a past Kissee Wallace sale in Missouri and is a past American Royal Grand Champion.

Lot 187 LaGrand Right Time 4961
 Birth Date: 2-12-2004 Bull +14783032 Tattoo: 4961

#N Bar Emulation EXT
 Leachman Right Time
 +11750711 Leachman Erica 0025

#Emulation N Bar 5522
 N Bar Primrose 2424
 #Tehama Bando 155
 Leachman Erica 8058

Performance S	
BW	+3.2
WW	+39
YW	+73
MILK	+18

Carass	
CW	+1.7
MARB	+1.07
RE	+1.06
FAT	+1.021
%RP	-1.25

#VDAR New Trend 315
 VDAR Beauty 3005
 +11950267 VDAR Beauty 228

#AAR New Trend
 #VDAR Lucy 704
 #Rito 2100 GDAR
 #VDAR Beauty 930

Ultrasound	
%IMF	+1.15
RE	-1.12
FAT	+1.014
%RP	-1.32

This son of the Pathfinder
 Sire Leachman Right Time

BW	205-DAY	RATIO	365-DAY	RATIO
80	730	ET	1080	ET

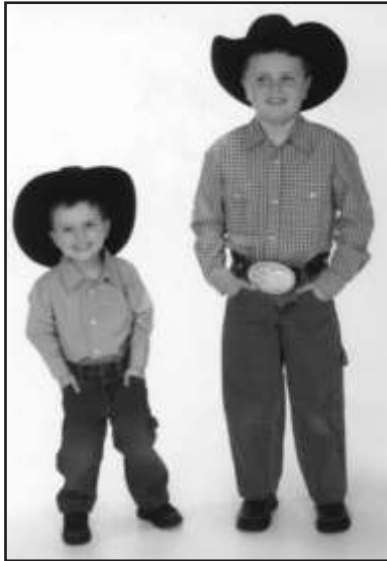
was produced in the embryo program from the herd sire producing Beauty family descending from the noted VDAR Beauty 228.

The donor dam of this bull balances a progeny birth ratio of 98 with progeny weaning and yearling ratios of 102 and 104 respectively on five natural calves coupled with a progeny IMF ratio of 107 on 40 head.



VDAR BEAUTY 3005 - The dam of Lot 187.

LAGRAND RIGHT TIME AND WIDESPREAD SONS



"How long you been ranchin'?"



GAR BLACKCLASS 1485 - Full sister-in-blood to the dam of Lots 191 and 192.

188 LaGrand Right Time 4803

Birth Date: 1-28-2004 Bull +14792093 Tattoo: 4803

BW	205-DAY	RATIO	365-DAY	RATIO
85	661	ET	1242	ET

Ultrasound	
%IMF	+0.23
RE	+0.29
FAT	+0.017
%RP	+0.06

189 LaGrand Right Time 4808

Birth Date: 1-27-2004 Bull +14792097 Tattoo: 4808

BW	205-DAY	RATIO	365-DAY	RATIO
82	690	ET	1092	ET

Ultrasound	
%IMF	-1.01
RE	+1.16
FAT	+0.009
%RP	+1.16

190 LaGrand Right Time 4809

Birth Date: 1-24-2004 Bull +14792098 Tattoo: 4809

#N Bar Emulation EXT
Leachman Right Time
+11750711 Leachman Erica 0025

#Emulation N Bar 5522
N Bar Primrose 2424
#Tehama Bando 155
Leachman Erica 8058

#VDAR New Trend 315
Jolly R Forever 117E
+12327588 +Jolly R Forever 2008

#AAR New Trend
#VDAR Lucy 704
#Candolier Forever 376
MG S Black Diamond

BW	205-DAY	RATIO	365-DAY	RATIO
86	701	ET	1206	ET

Performance	
BW	+3.3
VW	+3.9
YW	+6.6
MILK	+2.7

Carcass	
CW	+6
MARB	+0.08
RE	+0.02
FAT	+0.024
%RP	-1.31

Ultrasound	
%IMF	-1.01
RE	+0.33
FAT	+0.021
%RP	+0.08

This trio of flush brothers by the \$160,000 Pathfinder Sire Leachman Right Time was produced from a high-indexing donor dam with an impressive progeny weaning ratio of 117 and a progeny yearling ratio of 109 on five natural calves. The grandam of these bulls has the distinction of being a flush sister to the high marbling and high maternal Pathfinder Sire JR Juice 2005. Maternal brothers also sell.



Steve Patton

ROTH ERICA 1578 - Maternal sister to Lots 193-195 who sold in our 2002 Production Sale to MCM Farms, Whitestown, IN, for \$7,250.

191 LaGrand Widespread 4962

Birth Date: 1-24-2004 Bull +14783968 Tattoo: 4962

BW	205-DAY	RATIO	365-DAY	RATIO
100	698	ET	1247	ET

Ultrasound	
%IMF	-1.06
RE	+1.14
FAT	-1.001
%RP	-1.19

192 LaGrand Widespread 4972

Birth Date: 1-30-2004 Bull +14783972 Tattoo: 4972

#N Bar Emulation EXT
Whitestone Widespread MB
#12411157 MB Rachel 2173

#Emulation N Bar 5522
N Bar Primrose 2424
#DHD Traveler 6807
RRP Rachel 6072

#Paramont Ambush 2172
GAR Ambush 1175
+12548531 +GAR Bando 09

#Bandolier Eston Durness 42B
EWS Miss Burgess 1720
#Tehama Bando 155
Blackclass GAR 103

BW	205-DAY	RATIO	365-DAY	RATIO
93	806	ET	1318	ET

Performance	
BW	+2.5
VW	+4.2
YW	+7.5
MILK	+2.1

Carcass	
CW	+1
MARB	+0.06
RE	+0.04
FAT	+0.025
%RP	-1.21

Ultrasound	
%IMF	-1.04
RE	+0.04
FAT	-1.005
%RP	-1.32

A pair of special attraction flush brothers sired by the longtime-featured Accelerated Genetics sire Whitestone Widespread MB from a now-deceased donor dam with a progeny birth ratio of 95 coupled with a progeny weaning ratio of 108 on five natural calves.

The dam of these bulls is a full sister-in-blood to GAR Blackclass 1485 who is best known as the dam of SAV Limited Edition 9283.

Maternal brothers highlighted the 2003 LaGrand Bull Sale.

193 LaGrand Widespread 4974

Birth Date: 1-31-2004 Bull +14783974 Tattoo: 4974

BW	205-DAY	RATIO	365-DAY	RATIO
77	794	ET	1103	ET

Ultrasound	
%IMF	-1.16
RE	-1.20
FAT	+0.006
%RP	-1.34

194 LaGrand Widespread 4963

Birth Date: 2-1-2004 Bull +14783969 Tattoo: 4963

BW	205-DAY	RATIO	365-DAY	RATIO
89	766	ET	1132	ET

Ultrasound	
%IMF	-1.13
RE	-1.27
FAT	+0.017
%RP	-1.54

195 LaGrand Widespread 4971

Birth Date: 2-3-2004 Bull +14783971 Tattoo: 4971

#N Bar Emulation EXT
Whitestone Widespread MB
#12411157 MB Rachel 2173

#Emulation N Bar 5522
N Bar Primrose 2424
#DHD Traveler 6807
RRP Rachel 6072

#GDAR Traveler 71
DF Erica 4113
12190391 DF Erica 1112

#Traveler 1148 GDAR
GDAR Miss Blackcap 567
#+R&J Spade 1204
Schearbrook Erica X272

BW	205-DAY	RATIO	365-DAY	RATIO
70	699	ET	1086	ET

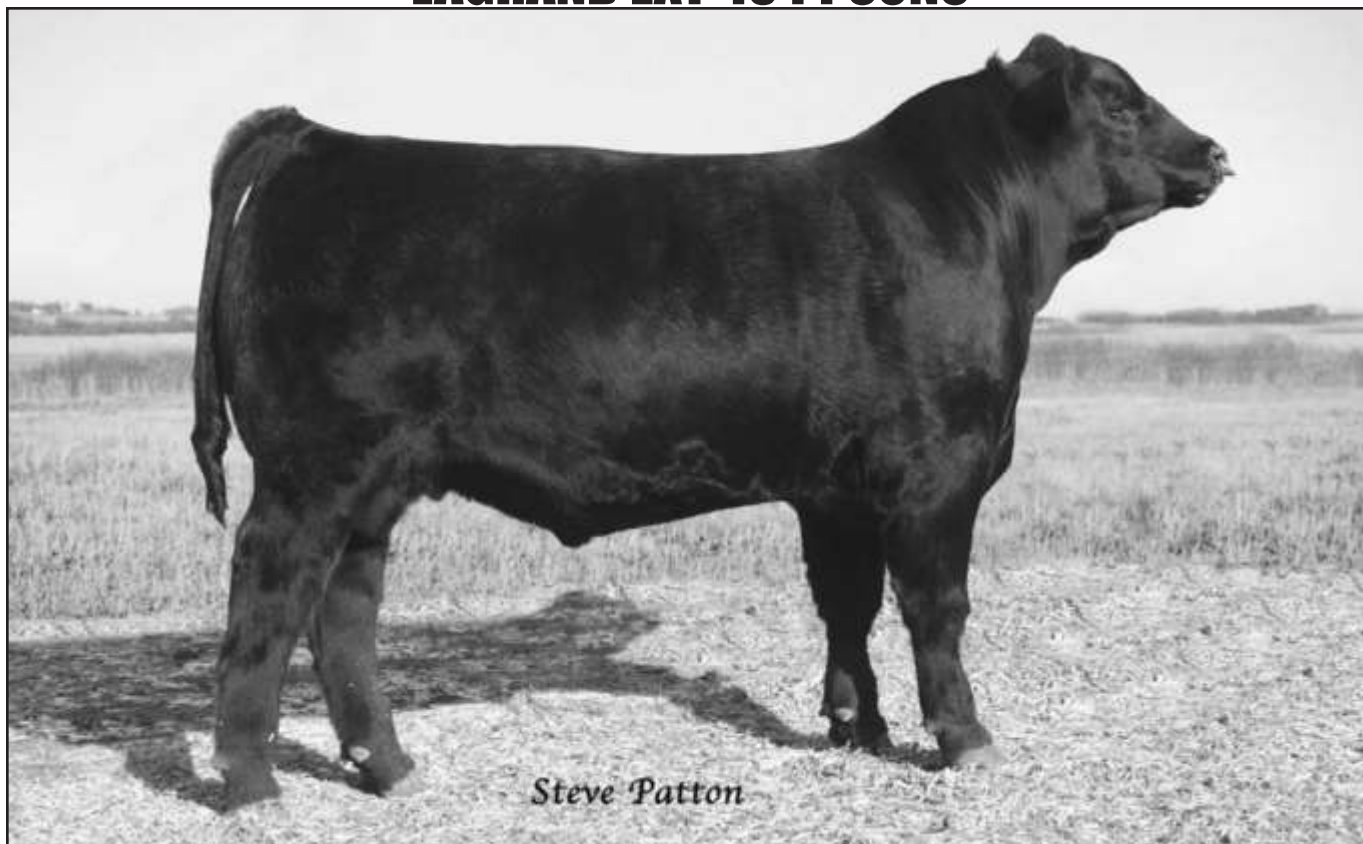
Performance	
BW	+2.8
VW	+4.0
YW	+7.4
MILK	+1.8

Carcass	
CW	+3
MARB	+0.10
RE	-1.05
FAT	+0.033
%RP	-1.44

Ultrasound	
%IMF	-1.13
RE	-1.31
FAT	+0.015
%RP	-1.54

This trio of flush brothers were produced in the embryo program at LaGrand Angus Ranch sired by the proven Pathfinder Sire Whitestone Widespread MB who has served as a longtime-featured member of the Accelerated Genetics A.I. stud. The proven donor dam of these bulls has a progeny weaning ratio of 104 and a progeny yearling ratio of 102 on four natural calves and she has produced a number of featured individuals in past LaGrand sales.

LAGRAND EXT 4344 SONS



Steve Patton

LAGRAND 4344 EXT 4158 - Lot 196

Lot 196 LaGrand 4344 EXT 4158

Birth Date: 1-11-2004 Bull 14686232 Tattoo: 4158

#N Bar Emulation EXT
GAR EXT 4344
+12304172 +GAR Scotch Cap 509

#Emulation N Bar 5522
N Bar Primrose 2424
#Scotch Cap
Rita 5H11 of 1B14 Rito 9J9

#Connealy Kincaid
Andora Gammer 9023
13332674 Andora Gammer 7043

#Tehama Bando 155
#Connealy 6807 647
+OSU 6807 Traveler 4145
Andora Gammer 511

NATIONAL WESTERN BULL.

This popular National

Western bull has an individual birth ratio of 94 combined with an individual weaning ratio of 109 and an individual yearling ratio of 107 from the herd sire producing Gammer Family and is sired by the rare and valuable GAR EXT 4344.

The dam of this bull balances a progeny birth ratio of 96 with progeny weaning and yearling ratios of 107 and 106 respectively on three calves.

BW	205-DAY	RATIO	365-DAY	RATIO
83	779	109	1421	107

Performance	
BW	+2.7
WW	+5.4
YW	+9.3
MILK	+12

Carcass	
CW	+1.0
MARB	+1.13
RE	+1.19
FAT	+0.12
%RP	-1.01

Ultrasonc	
%IMF	+1.09
RE	+1.27
FAT	+0.09
%RP	+1.10

Lot 198 LaGrand 4344 EXT H475

Birth Date: 2-8-2004 Bull +14751801 Tattoo: H475

#N Bar Emulation EXT
GAR EXT 4344
+12304172 +GAR Scotch Cap 509

#Emulation N Bar 5522
N Bar Primrose 2424
#Scotch Cap
Rita 5H11 of 1B14 Rito 9J9

#Basin Ambush 3905 (FR)
Stevenson Pride Lady 6368
#13036393 Stevenson Pride Lady 4066

#Paramont Ambush 2172
Basin Heather Bloom 48C (R)
#Basin Rainmaker 2844
+Stevenson Pride Lady 353D

A flush brother to an \$11,500 one-half interest featured

heifer in the 2004 LaGrand Fall Sale where their Pathfinder Dam was the \$42,000 second top-selling cow.

The dam of this bull combines a progeny birth ratio of 97 with progeny weaning and yearling ratios of 107 and 106 respectively on four natural calves.

BW	205-DAY	RATIO	365-DAY	RATIO
90	718	ET	1209	ET

Performance	
BW	+1.24
WW	+4.44
YW	+8.2
MILK	+15

Carcass	
CW	+1
MARB	+1.10
RE	+1.11
FAT	+0.026
%RP	-1.16

Ultrasonc	
%IMF	+1.09
RE	+1.34
FAT	+0.008
%RP	+1.57

Lot 197 LaGrand Blackbird Lass 4241

Birth Date: 1-20-2004 Bull 14686241 Tattoo: 4241

#N Bar Emulation EXT
GAR EXT 4344
+12304172 +GAR Scotch Cap 509

#Emulation N Bar 5522
N Bar Primrose 2424
#Scotch Cap
Rita 5H11 of 1B14 Rito 9J9

#SAF Focus of ER
Roth Blackbird Lass 1516
+13928284 +VAR Blackbird Lass 5030

#SAF Fame
GDAR Forever Lady 246
#PAPA Equator 2928
Leachman Lass 1004

A special blending of the herd sire producing Glass,

Forever Lady, Rita and Primrose families by the now-deceased GAR EXT 4344. The dam of this bull has a progeny birth ratio of 97 combined with a progeny weaning ratio of 103 and a progeny yearling ratio of 105 on two calves.

BW	205-DAY	RATIO	365-DAY	RATIO
80	695	97	1293	103

Performance	
BW	+2.8
WW	+4.6
YW	+9.0
MILK	+14

Carcass	
CW	+1.13
MARB	+1.16
RE	+1.22
FAT	+0.014
%RP	-1.04

Ultrasonc	
%IMF	+1.27
RE	+1.36
FAT	+0.039
%RP	-1.40



47 STEVENSON PRIDE LADY 6368 - The \$42,000 Pathfinder Dam of Lot 198.

LAGRAND EXT SONS



LAGRAND EXT 3001 - Lot 199

GIBBET HILL MIGNONNE E37 -

The dam of Lot 199.

Lot 199 LaGrand EXT 3001

Birth Date: 7-11-2003 Bull +14641751 Tattoo: 3001

#Emulation N Bar 5522 #Emulation 31 (FX)
N Bar Emulation EXT Ankony 8F78 Lass 8F275
#10776479 N Bar Primrose 2424 #Emulation 31 (FX)
Primrose N Bar 9962

#PAPA Equator 2928 #+PAPA Power 096
Gibbet Hill Mignonne E37 #PAPA Envious Blackbird 8849
12860162 Gibbet Hill Mignonne TR 29 #QAS Traveler 23-4
Gibbet Hill Mignonne S 24

A son of the established
Pathfinder Sire N Bar

BW	205-DAY	RATIO	365-DAY	RATIO
75	654	ET	1084	ET

Emulation EXT from a noted donor dam featured in the Conley program in Missouri with a progeny birth ratio of 98 combined with a progeny weaning ratio of 115 on five natural calves along with a progeny IMF ratio of 104 and a progeny ultrasound ribeye ratio of 103 on five head from the noted Mignonne Family.

Performance	
BW	+2.8
WW	+45
YW	+79
MILK	+23

Carcass	
CW	+18
MARB	+04
RE	+18
FAT	+009
%RP	+10

Ultrasound	
%IMF	+19
RE	+26
%RP	+021

Lot 201 LaGrand EXT 4800

Birth Date: 1-22-2004 Bull +14783532 Tattoo: 4800

BW	205-DAY	RATIO	365-DAY	RATIO
96	693	ET	1157	ET

Ultrasound	
%IMF	+24
RE	+23
FAT	+028
%RP	+27

Lot 202 LaGrand EXT 4817

Birth Date: 1-30-2004 Bull +14783551 Tattoo: 4817

#Emulation N Bar 5522 #Emulation 31 (FX)
N Bar Emulation EXT Ankony 8F78 Lass 8F275
#10776479 N Bar Primrose 2424 #Emulation 31 (FX)
Primrose N Bar 9962

#VDAR New Trend 315 #AAR New Trend
VDAR Lucy 425 #VDAR Lucy 704
#11400673 +VDAR Lucy 920 #Schearbrook Shoshone
VDAR Lucy 329

This pair of flush brothers by
the established Pathfinder

BW	205-DAY	RATIO	365-DAY	RATIO
96	719	ET	1225	ET

Ultrasound	
BW	+27
WW	+38
YW	+69
MILK	+23

Carcass	
CW	+10
MARB	+16
RE	+07
FAT	+030
%RP	+37

Ultrasound	
%IMF	+24
RE	+27
%RP	+043

Sire N Bar Emulation EXT were produced from a highly proven donor dam who is a Pathfinder Dam with a progeny birth ratio of 97 balanced with progeny weaning and yearling ratios of 105 and 103 respectively on five natural calves along with an impressive progeny IMF ratio of 111 on 21 head.

Twenty-two maternal sisters post a collective progeny weaning ratio of 104.

Lot 200 LaGrand EXT 4903

Birth Date: 1-7-2004 Bull +14778005 Tattoo: 4903

#Emulation N Bar 5522 #Emulation 31 (FX)
N Bar Emulation EXT Ankony 8F78 Lass 8F275
#10776479 N Bar Primrose 2424 #Emulation 31 (FX)
Primrose N Bar 9962

#Bon View Bando 598 #Tehama Bando 155
Roth Wendy 1993 #Bon View Dora 56
+14146966 +Double Bar Wendy 508-0100 #CH 054 Rito 0100
KMR Wendy 508

This January herd sire
prospect from the embryo

BW	205-DAY	RATIO	365-DAY	RATIO
80	740	ET	1274	ET

program is by the established Pathfinder Sire N Bar Emulation EXT from a donor dam who records a progeny weaning ratio of 107 and a progeny yearling ratio of 105 on her first natural calf, stemming from a highly proven grandam.

Performance	
BW	+2.2
WW	+45
YW	+82
MILK	+27

Carcass	
CW	+16
MARB	+05
RE	+13
FAT	+014
%RP	+21

Ultrasound	
%IMF	+08
RE	+18
%RP	+013



BCC MARATHON - Maternal brother to Lot 199.

LAGRAND EXT 2705 SONS



LAGRAND 2705 EXT 4110 - Lot 203

203 LaGrand 2705 EXT 4110

Birth Date: 1-4-2004 Bull 14682223 Tattoo: 4110

#N Bar Emulation EXT #Emulation N Bar 5522
 La Grand Roth EXT 2705 N Bar Primrose 2424
 +14138295 +Bear MTN Forever Lady 601 #PAPA Equator 2928
 #Blackcap Lady 384 GDAR

#JLB Exacto 416 #GAR Precision 1680
 Roth Rosella Eileenmere 1122 +Brost Burgess 041
 +13849365 CW Rosella Eileenmere 623 Basin Sensation 259D
 Rosella Eileenmere 421

NATIONAL WESTERN BULL.

A powerful member of the impressive first calf crop by the LaGrand junior herd sire LaGrand Roth EXT 2705. This bull has an individual weaning ratio of 106 and an individual yearling ratio of 104 produced as the first calf from a dam by the Angus sire Alliance winner JLB Exacto 416.

BW	205-DAY	RATIO	365-DAY	RATIO
95	762	106	1380	104

Performance	
BW	+4.0
WW	+46
YW	+83
MILK	+23

Measurement	
%IMF	1+.15
RE	1+.27
FAT	1+.012
%RP	1+.07

205 LaGrand 2705 EXT 4531

Birth Date: 3-17-2004 Bull 14682241 Tattoo: 4531

#N Bar Emulation EXT #Emulation N Bar 5522
 La Grand Roth EXT 2705 N Bar Primrose 2424
 +14138295 +Bear MTN Forever Lady 601 #PAPA Equator 2928
 #Blackcap Lady 384 GDAR

#Alberda Traveler 416 #DHD Traveler 6807
 Roth Miss Revolution 079 Alberda Queen Kimberly 222
 13592505 Roth Miss Revolution 8115 #Kruggerand of Donamere 490
 Miss Revolution E134 of Maf

This member of the first calf crop by the featured herd

sire LaGrand Roth EXT 2705 is a grandson of the Pathfinder Sires N Bar Emulation EXT and Alberda Traveler 416.

BW	205-DAY	RATIO	365-DAY	RATIO
91	682	94	1228	98

Performance	
BW	+2.6
WW	+39
YW	+74
MILK	+18

Measurement	
%IMF	1+.12
FAT	1+.07
%RP	1+.024

204 LaGrand 2705 EXT 4439

Birth Date: 2-18-2004 Bull 14682070 Tattoo: 4439

#N Bar Emulation EXT #Emulation N Bar 5522
 La Grand Roth EXT 2705 N Bar Primrose 2424
 +14138295 +Bear MTN Forever Lady 601 #PAPA Equator 2928
 #Blackcap Lady 384 GDAR

#Traveler 124 GDAR #QAS Traveler 23-4
 Sitz Blackcap Effie 1001 Rachel Rito 813 GDAR
 11533509 #Sitz Blackcap Effie 1207 #RR Hero 5257
 Sitz Blackcap Effie 1094

This bull from the first calf crop by LaGrand Roth EXT

2705 has an individual weaning ratio of 103 from a time-tested dam bred in the Sitz herd by the legendary Pathfinder Sire Traveler 124 GDAR. The grandam is a Pathfinder Dam.

BW	205-DAY	RATIO	365-DAY	RATIO
94	736	103	1155	92

Performance	
BW	+3.5
WW	+42
YW	+66
MILK	+16

Measurement	
%IMF	1+.05
RE	1+.21
FAT	1+.022
%RP	1-.04



LA GRAND ROTH EXT 2705 - The sire of Lots 203, 204 and 205.

BIG RIVER SONS



LAGRAND BIG RIVER 3159 - Lot 206

STEVENSON PRIDE LADY 6368 - The \$42,000 Pathfinder Dam of Lot 206.

206 LaGrand Big River 3159

Birth Date: 8-4-2003 Bull #14641823 Tattoo: 3159

#Leachman Saughatchee 3000C #N Bar Emulation EXT
LCC Big River 3499J Leachman BC 7100
+13671407 Bon View Pride 664 #+GAR Sleep Easy 1009
#Bon View Pride 1551

#Basin Ambush 3905 (FR) #Paramont Ambush 2172
Stevenson Pride Lady 6368 Basin Heather Bloom 48C (R)
#13036393 Stevenson Pride Lady 4066 #Basin Rainmaker 2844
+Stevenson Pride Lady 353D

A uniquely bred herd sire prospect produced in the embryo program at LaGrand Angus Ranch by LCC Big River 3499J from the \$42,000 Pathfinder Dam Stevenson Pride Lady 6368 who records a progeny birth ratio of 97 coupled with a progeny weaning ratio of 107 and a progeny yearling ratio of 106 on four natural calves.

A long list of successful maternal siblings to this bull include the many-time champion Roth Holiday Paradox 1030 who was the \$15,000 second top-selling bull of the 2002 LaGrand Bull Sale.

BW	205-DAY	RATIO	365-DAY	RATIO
82	586	ET	1098	ET

Performance	
BW	+2.0
VW	+4.1
YW	+7.9
MILK	+2.3

Carcass	
CW	+1.6
MARB	+0.3
RE	+1.7
FAT	+0.07
%RP	+1.7

Ultrason	
%IMF	+1.05
RE	+1.05
FAT	+0.02
%RP	+1.10

207 LaGrand Big River 3015

Birth Date: 8-8-2003 Bull 14641757 Tattoo: 3015

#Leachman Saughatchee 3000C #N Bar Emulation EXT
LCC Big River 3499J Leachman BC 7100
+13671407 Bon View Pride 664 #+GAR Sleep Easy 1009
#Bon View Pride 1551

#Krugerrand of Donamere 490 #CH Stacker 7040
SBH Sweet Maggie 6810 Donamere Bachel Beauty 288
12638005 B/R Mc Henry Blackcap 8100 B/R Master Key
Whites Cara Ann 9873

A son of the high-performance sire LCC Big River 3499J.

This bull offers a unique outcross pedigree backed by the Pathfinder Sire Leachman Saughatchee 3000C and Krugerrand of Donamere 490.

BW	205-DAY	RATIO	365-DAY	RATIO
85	682	97	1226	97

Performance	
BW	+3.0
VW	+4.2
YW	+8.0
MILK	+1.8

Carcass	
CW	+1.9
MARB	+1.05
RE	+1.32
FAT	+0.07
%RP	+1.33

Ultrason	
%IMF	+1.03
RE	+1.16
FAT	+0.03
%RP	+1.12

208 LaGrand Big River 3013

Birth Date: 8-7-2003 Bull 14641755 Tattoo: 3013

#Leachman Saughatchee 3000C #N Bar Emulation EXT
LCC Big River 3499J Leachman BC 7100
+13671407 Bon View Pride 664 #+GAR Sleep Easy 1009
#Bon View Pride 1551

#Leachman Explorer #N Bar Emulation EXT
Dameron Eline 988 Leachman Blackcap 9006
13372149 Eline F33 MC 2100 930
Dameron Eline 128

A special favorite among the sons of LCC Big River 3499J with an individual birth ratio of 91 coupled with an individual weaning ratio of 106.

The dam of this bull has a progeny weaning ratio of 109 on two calves and a progeny yearling ratio of 112 on one head.

BW	205-DAY	RATIO	365-DAY	RATIO
81	743	106	1306	104

Performance	
BW	+2.7
VW	+4.4
YW	+8.0
MILK	+2.0

Carcass	
CW	+1.7
MARB	+1.02
RE	+1.27
FAT	+0.005
%RP	+1.17

Ultrason	
%IMF	+1.01
RE	+1.10
FAT	+0.12
%RP	+1.13

REFERENCE Sires



PAPA EQUATOR 2928 - Reference Sire P

PAPA Equator 2928

Birth Date: 2-9-1992 Bull #11788302 Tattoo: 2928

#Cottontail Maternal Power464 #PS Power Play (GDF)
PAPA Power 096 Leachman Pride 9518
#11452006 Blackbird DHD 2816 #QAS Traveler 23-4
RR Blackbird DHD 903

PAPA Rito Traveler 4807 #QAS Traveler 23-4
PAPA Envious Blackbird 8849 DHD Blackcap Mc Henry 2824
#11136497 Envious Blackbird DHD 5848 DHD Rito Destiny 2821
#Envious Blackbird DHD 1827

FOR REFERENCE ONLY.

Featuring the sons of this now-deceased, high-performance sire who ranks in the top one percent among current sires for Yearling Weight EPD and in the top three percent for Weaning Weight EPD, serving as an outcross source of added growth, muscle and power. His sons and grandsons sell.

Performance	
BW	+1.2
VW	+5.6
YW	+11.1
MILK	+1.7

Carcass	
CW	+3.3
MARB	-0.2
RE	+3.6
FAT	-0.43
%RP	+4.8

Ultrason	
%IMF	+1.2
RE	+3.0
FAT	-0.12
%RP	+1.4

PAPA Universe 515

Birth Date: 2-6-1995 Bull #12429451 Tattoo: 515

#+PAPA Power 096 #Cottontail Maternal POWER464
PAPA Equator 2928 Blackbird DHD 2816
#11788302 #PAPA Envious Blackbird 8849 PAPA Rito Traveler 4807
Envious Blackbird DHD 5848

#PAPA Rito T Intense DHD 6844 PAPA Rito Traveler 4807
PLD Eriskay PAPA 011 Blackcap Mc Henry DHD 4810
11451988 #PAPA Eriskay 7862 #Cottontail Maternal Power464
Eriskay DHD 4824

FOR REFERENCE ONLY.

Featuring sons of this proven sire, who has served as a longtime-featured member of the Accelerated Genetics A.I. stud, along with the Pathfinder Sire PAPA Equator 2928. PAPA Universe 515 excels in genetics for both added growth and muscle like his sire.

Performance	
BW	+6.4
VW	+5.4
YW	+9.1
MILK	+1.8

Carcass	
CW	+1.9
MARB	+3.0
RE	+4.0
FAT	-0.49
%RP	+7.7

Ultrason	
%IMF	+3.2
RE	+5.2
FAT	-0.10
%RP	+5.5



PAPA UNIVERSE 515 - Reference Sire Q