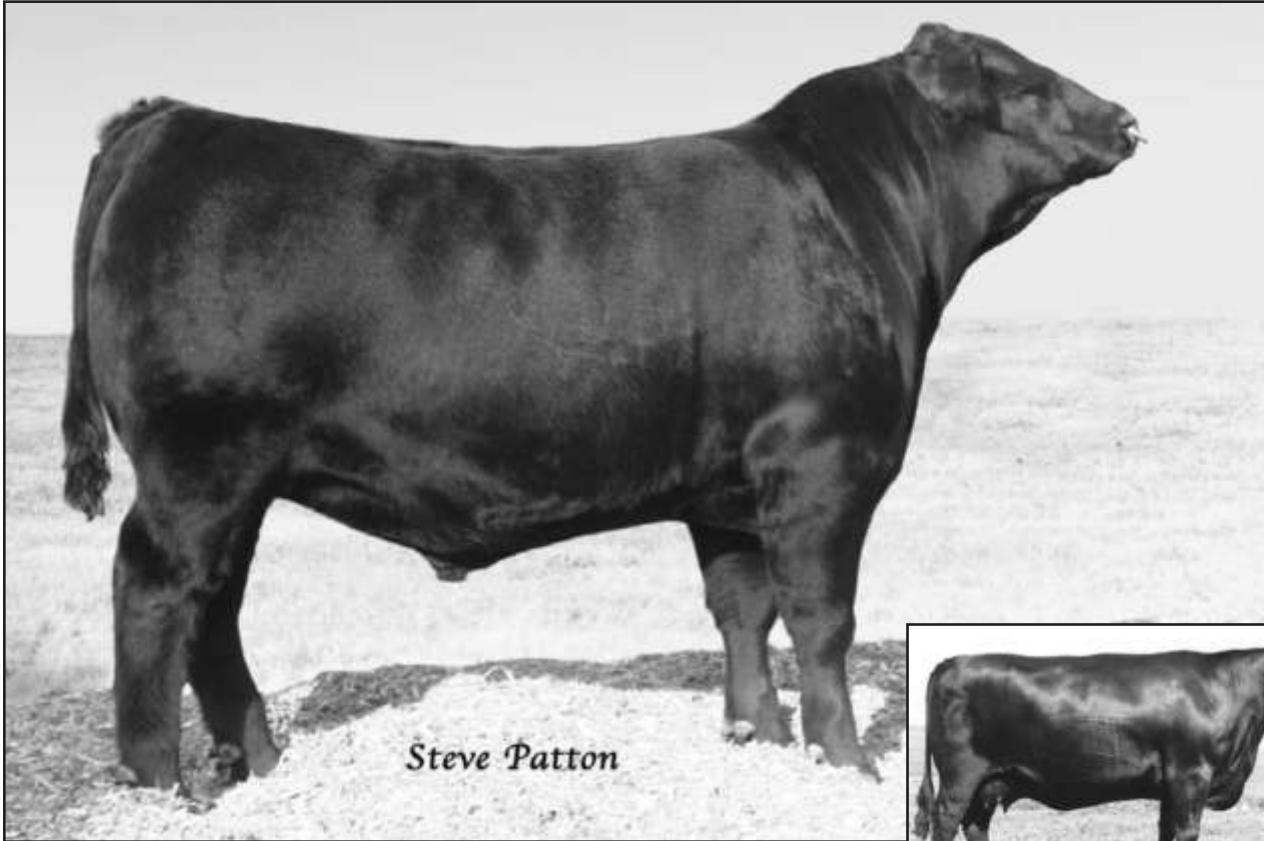


LAGRAND NEW DESIGN 878 SONS



LAGRAND NEW DESIGN 4054 - Lot 34



SVF FOREVER LADY 176B -
The grandam of Lot 34.

34 LaGrand New Design 4054

Birth Date: 1-8-2004 Bull 14682109 Tattoo: 4054

#B/R New Design 036
Bon View New Design 878
#13062750 Bon View Gammer 85

#VDAR New Trend 315
B/R Blackcap Empress 76
#Bon View Bando 598
Bon View Gammer 233

#GAR Precision 1680
LaGrand Forever Lady 2849
+14246798 +SVF Forever Lady 176B

#Tehama Bando 155
9J9 GAR 856
#GDAR Executive 727
+GDAR Forever Lady 719

BW	205-DAY	RATIO	365-DAY	RATIO
79	820	115	1511	114

Performance	
BW	+1.6
VW	+47
YW	+91
MILK	+28
Carass	
CW	+12
MARB	+23
RE	+26
FAT	+0.11
%RP	+0.03
Ultrasound	
%IMF	+2.0
RE	+4.3
FAT	+0.18
%RP	+1.8

NATIONAL WESTERN BULL.

A special attraction herd sire prospect with an elite EPD balance combining a below breed average Birth Weight EPD with a Yearling Weight EPD in the top five percent. This bull records an individual birth ratio of 97 balanced with individual weaning and yearling ratios of 115 and 114 respectively along with an individual IMF ratio of 112 and an individual ultrasound ribeye ratio of 102 while concentrating the carcass genetics of the popular and proven Pathfinder Sire Bon View New Design 878 and GAR Precision 1680.

The grandam is the famous SVF Forever Lady 176B who is a prominent member of one of the most famous embryo flushes of all time which includes the rare GDAR SVF Russ 184B.

B Bon View New Design 878

Birth Date: 2-17-1998 Bull #13062750 Tattoo: 878

#VDAR New Trend 315
B/R New Design 036
#11418151 B/R Blackcap Empress 76

#AAR New Trend
#VDAR Lucy 704
#K&K Top Gun
+QLC A70 Blkcp Empress E43T

#Bon View Bando 598
Bon View Gammer 85
12346837 Bon View Gammer 233

#Tehama Bando 155
#Bon View Dora 56
#N Bar Emulation EXT
Bon View Gammer 2409

Performance	
BW	+1.3
VW	+42
YW	+83
MILK	+32
Carass	
CW	+11
MARB	+34
RE	+16
FAT	+0.29
%RP	-2.8
Ultrasound	
%IMF	+1.9
RE	+5.4
FAT	+0.19
%RP	+3.8



BON VIEW NEW DESIGN 878 - Reference Sire B

FOR REFERENCE ONLY.

Featuring sons of this popular and proven sire who ranks number one for registrations for two consecutive years being the youngest sire in the history of the breed to rank first when he achieved that honor in 2003 and the first sire in breed history to sire more than ten thousand registered progeny in a single year in 2004. This widely used Pathfinder Sire is also the sire of the popular LaGrand featured sire WCC Special Design L309.

LAGRAND NEW DESIGN 878 SONS



LAGRAND NEW DESIGN 4067 - Lot 35

NATIONAL WESTERN BULL.

This paternal brother to the popular WCC Special Design L309 is sired by the Pathfinder Sire Bon View New Design 878 from the dam by the Pathfinder Sire BCC Bushwacker 41-93.

This bull combines a modest individual birth ratio of 93 with an individual weaning ratio of 108 as the first calf from a two-year-old dam.

35 LaGrand New Design 4067

Birth Date: 1-9-2004 Bull 14682130 Tattoo: 4067

#B/R New Design 036
Bon View New Design 878
#13062750 Bon View Gammer 85

#VDAR New Trend 315
B/R Blackcap Empress 76
#Bon View Bando 598
Bon View Gammer 233

#BCC Bushwacker 41-93
Roth Blackcap 2080
14143054 Twin Oaks PP Blackcap 8062

#Paramont Ambush 2172
RC Anita T Bando 918903
#PS Power Play (GDF)
Twin Oaks Blackcap 5828

BW	205-DAY	RATIO	365-DAY	RATIO
75	776	108	1342	101

Performance	
BW	+1.8
WW	+46
YW	+77
MILK	+26

Carcass	
CW	+4
MARB	+1.19
RE	+1.10
FAT	+0.18
%RP	-1.11

Ultrasonc	
%IMF	+0.08
RE	+0.36
FAT	+0.22
%RP	+1.17

36 LaGrand New Design 4080

Birth Date: 1-1-2004 Bull 14682154 Tattoo: 4080

#B/R New Design 036
Bon View New Design 878
#13062750 Bon View Gammer 85

#VDAR New Trend 315
B/R Blackcap Empress 76
#Bon View Bando 598
Bon View Gammer 233

#Rockn D Ambush 1531
Roth Lassie 2153
14134739 Jolly R Lassie 374E

#Paramont Ambush 2172
MS Blackcap Band of RD 1301
Sitz Cornhusker 6662
Jolly R Lassie 9153

BW	205-DAY	RATIO	365-DAY	RATIO
71	727	102	1404	106

Performance	
BW	+9
WW	+40
YW	+82
MILK	+24

Carcass	
CW	+8
MARB	+1.35
RE	+1.19
FAT	+1.002
%RP	+1.10

Ultrasonc	
%IMF	+1.16
RE	+1.43
FAT	+1.010
%RP	+1.33



LAGRAND NEW DESIGN 4080- Lot 36

NATIONAL WESTERN BULL.

A balanced EPD herd sire prospect by the popular Pathfinder Sire Bon View New Design 878 who has led the breed for registrations for two consecutive years and is best known as the sire of the popular LaGrand herd sire WCC Special Design L309.

This bull combines an individual birth ratio of 88 with individual weaning and yearling ratios of 102 and 106 respectively produced as the first calf from a dam by the elite carcass sire Rockn D Ambush 1531.

LAGRAND NEW DESIGN 878 SONS

NATIONAL WESTERN BULL.

This popular bull from the 2004

LaGrand calf crop balances an individual birth ratio of 97 with an individual weaning ratio of 102 from a dam with a progeny weaning ratio of 101 on three calves and a progeny IMF ratio of 105 on one head.

This bull is sired by the popular Bon View New Design 878 from a dam by the Pathfinder Sire Krugerrand of Donamere 490.



LAGRAND NEW DESIGN 4276 - Lot 37

37 LaGrand New Design 4276

Birth Date: 1-24-2004 Bull 14682306 Tattoo: 4276

#B/R New Design 036 #VDAR New Trend 315
 Bon View New Design 878 B/R Blackcap Empress 76
 #13062750 Bon View Gammer 85 #Bon View Bando 598
 Bon View Gammer 233
 #Krugerrand of Donamere 490 #CH Stacker 7040
 Roth Empress 0319 Donamere Bachel Beauty 288
 +13655394 Thunder Mountain Empress 0K3 #Rito 2100 GDAR
 Thunder Mountain Empress 7K1

BW	205-DAY	RATIO	365-DAY	RATIO
85	729	102	1295	98

Performance	
BW	+1.7
WW	+42
YW	+77
MILK	+24
Carcass	
CW	+1.12
MARB	+1.19
RE	+1.21
FAT	+1.004
%RP	+1.03
Muscling	
%IMF	+1.05
RE	+1.26
FAT	+1.008
%RP	+1.12

38 LaGrand New Design 4339

Birth Date: 1-31-2004 Bull 14682275 Tattoo: 4339

#B/R New Design 036 #VDAR New Trend 315
 Bon View New Design 878 B/R Blackcap Empress 76
 #13062750 Bon View Gammer 85 #Bon View Bando 598
 Bon View Gammer 233
 #Sitz SLS Rainmaker 7596 #GDAR Rainmaker 340
 Roth Rita 1515 SLS Barbara Perfection 2571
 +13927222 +Rita OM26 of 5H11 Scotch Cap #Scotch Cap
 Rita 5H11 of 1B14 Rito 9J9

BW	205-DAY	RATIO	365-DAY	RATIO
89	755	105	1373	103

Performance	
BW	+2.9
WW	+46
YW	+85
MILK	+25
Carcass	
CW	+1.7
MARB	+1.20
RE	+1.15
FAT	+1.026
%RP	+1.19
Muscling	
%IMF	+1.04
RE	+1.24
FAT	+1.012
%RP	+1.18

NATIONAL WESTERN BULL.

A blending of the herd sire producing Rita and Gammer families by the popular Pathfinder Sire Bon View New Design 878 who has led the breed for registrations in 2003 and 2004.

This bull has individual weaning and yearling ratios of 105 and 103 respectively.

The grandam of this bull is a famous member of one of the most prominent embryo flushes of all time.



LAGRAND NEW DESIGN 4339 - Lot 38

LAGRAND NEW DESIGN 878 SONS



BON VIEW NEW DESIGN 878 - Featuring his sons.

39 LaGrand New Design 4072

Birth Date: 1-1-2004 Bull 14682139 Tattoo: 4072

#B/R New Design 036 #VDAR New Trend 315
 Bon View New Design 878 B/R Blackcap Empress 76
 #13062750 Bon View Gammer 85 #Bon View Bando 598
 Bon View Gammer 233

#Famous 7001 #SAF Fame
 Roth Everelda Entense 2227 TK Karen 1369
 14134814 Sitz Everelda Entense 188 #OCC Bonanza 880B
 Sitz Everelda Entense 224

BW	205-DAY	RATIO	365-DAY	RATIO
69	770	108	1298	103

A blending of the elite Everelda Entense Gammer family by the popular Bon View New Design 878. This bull combines a modest individual birth ratio of 86 with an individual weaning ratio of 108 and an individual yearling ratio of 103 produced as the first calf from a two-year-old dam by the National Western and North American International Grand Champion Famous 7001.

Performance	
BW	+1.5
WW	+47
YW	+85
MILK	+26
Carcass	
CW	+1.0
MARB	+1.29
RE	+1.20
FAT	+1.013
%RP	-1.03
Ultrasound	
%IMF	+1.18
RE	+1.52
FAT	+1.008
%RP	+1.58

40 LaGrand New Design 4083

Birth Date: 1-1-2004 Bull 14682162 Tattoo: 4083

#B/R New Design 036 #VDAR New Trend 315
 Bon View New Design 878 B/R Blackcap Empress 76
 #13062750 Bon View Gammer 85 #Bon View Bando 598
 Bon View Gammer 233

#Rockn D Ambush 1531 #Paramont Ambush 2172
 Roth Lass 2184 MS Blackcap Band of RD 1301
 14134763 Jolly R Lass 085G #Summitcrest Stampede
 Bear Creek Lass 9182

BW	205-DAY	RATIO	365-DAY	RATIO
72	770	108	1288	103

This January herd sire prospect offers a modest Birth Weight EPD, combining an individual birth ratio of 89 with an individual weaning ratio of 108 and an individual yearling ratio of 103. This bull concentrates the genetics of the Pathfinder Sire Bon View New Design 878 and Rockn D Ambush 1531 from a two-year-old dam.

Performance	
BW	+6
WW	+45
YW	+72
MILK	+25
Carcass	
CW	+1.7
MARB	+1.33
RE	+1.19
FAT	+1.001
%RP	+1.15
Ultrasound	
%IMF	+1.34
RE	+1.40
FAT	+1.013
%RP	+1.37

41 LaGrand New Design 4084

Birth Date: 1-1-2004 Bull 14682163 Tattoo: 4084

#B/R New Design 036 #VDAR New Trend 315
 Bon View New Design 878 B/R Blackcap Empress 76
 #13062750 Bon View Gammer 85 #Bon View Bando 598
 Bon View Gammer 233

#Rockn D Ambush 1531 #Paramont Ambush 2172
 Roth Eline 2107 MS Blackcap Band of RD 1301
 14134902 Jolly R Eline 346F Sitz Cornhusker 6662
 Jolly R Eline 9100

BW	205-DAY	RATIO	365-DAY	RATIO
61	640	89	1128	89

A low birth weight herd sire prospect by the popular and proven Bon View New Design 878 with an individual birth ratio of 77. This bull is a three-quarter brother to Lot 40.

Performance	
BW	-6
WW	+35
YW	+68
MILK	+22
Carcass	
CW	+1.8
MARB	+1.35
RE	+1.19
FAT	+1.002
%RP	+1.10
Ultrasound	
%IMF	+1.18
RE	+1.19
FAT	+1.007
%RP	+1.45

42 LaGrand New Design 4099

Birth Date: 1-2-2004 Bull 14682204 Tattoo: 4099

#B/R New Design 036 #VDAR New Trend 315
 Bon View New Design 878 B/R Blackcap Empress 76
 #13062750 Bon View Gammer 85 #Bon View Bando 598
 Bon View Gammer 233

#SS Traveler 6807 T510 #DHD Traveler 6807
 LaGrand Blackclass 2838 #SS Miss Hi Spade A114
 +14249202 Broken Arrow Roth MS RUSS808 +GDAR SVF Russ 184B
 Brokenarrow Blackclass3904-18

BW	205-DAY	RATIO	365-DAY	RATIO
74	727	102	1305	104

A balanced EPD herd sire prospect ranking in the lowest 15 percent among non-parent bulls for Birth Weight EPD and in the top 15 percent for Yearling Weight EPD. This bull has an individual birth ratio of 92 combined with individual weaning and yearling ratios of 102 and 104 respectively produced as the first calf from a dam by the now-deceased Pathfinder Sire SS Traveler 6807 T510. The dam of this bull was produced in the embryo program at LaGrand Angus Ranch.

Performance	
BW	+6
WW	+43
YW	+85
MILK	+26
Carcass	
CW	+1.7
MARB	+1.22
RE	+1.15
FAT	+1.006
%RP	+1.02
Ultrasound	
%IMF	+1.09
RE	+1.16
FAT	+1.001
%RP	+1.17

43 LaGrand New Design 4028

Birth Date: 1-5-2004 Bull 14682075 Tattoo: 4028

#B/R New Design 036 #VDAR New Trend 315
 Bon View New Design 878 B/R Blackcap Empress 76
 #13062750 Bon View Gammer 85 #Bon View Bando 598
 Bon View Gammer 233

Bon View Bando 1394 #Bon View Bando 598
 Roth Coquette Pride 2726 Bon View Erianna 131
 +14331581 Andora Coquette Pride 644 #Hoff Balancer SC 7109
 Andora Coquette Pride 861

BW	205-DAY	RATIO	365-DAY	RATIO
72	776	108	1374	109

A balanced EPD herd sire prospect combining a modest individual birth ratio of 89 with an individual weaning ratio of 108 and an individual yearling ratio of 109 backed by the proven sires Bon View New Design 878 and Bon View Bando 1394. This bull ranks in the top ten percent among non-parent bulls for Yearling Weight EPD balanced with a Birth Weight EPD in the lowest twenty percent.

Performance	
BW	+1.0
WW	+48
YW	+90
MILK	+25
Carcass	
CW	+1.13
MARB	+1.27
RE	+1.18
FAT	+1.010
%RP	-1.06
Ultrasound	
%IMF	+1.03
RE	+1.49
FAT	+1.001
%RP	+1.05



Justin Mogck and two carload bulls doing lawn work!

44 LaGrand 878 Design 4060

Birth Date: 1-9-2004 Bull 14682115 Tattoo: 4060

#B/R New Design 036 #VDAR New Trend 315
 Bon View New Design 878 B/R Blackcap Empress 76
 #13062750 Bon View Gammer 85 #Bon View Bando 598
 Bon View Gammer 233

RP 3RD Bushwacker #BCC Bushwacker 41-93
 Roth Barbara 2006 LB Queen of Spades
 14139229 +Roth Barbara 0432 #JLB Exacto 416
 Gibb Barbara 3317

BW	205-DAY	RATIO	365-DAY	RATIO
80	794	111	1388	110

Ranking in the top five percent among non-parent bulls for Ultrasound Ribeye Area EPD and in the top four percent for Weaning Weight EPD coupled with a Yearling Weight EPD in the top ten percent, this outstanding prospect has an individual birth ratio of 99 combined with individual weaning and yearling ratios of 111 and 110 respectively along with an individual ultrasound ribeye ratio of 112 produced as the first calf from a dam sired by RP 3RD Bushwacker. The grandam was produced in the embryo program at LaGrand Angus Ranch.

Performance	
BW	+2.7
WW	+51
YW	+88
MILK	+32
Carcass	
CW	+1.12
MARB	+1.26
RE	+1.25
FAT	+1.001
%RP	+1.15
Ultrasound	
%IMF	+1.02
RE	+1.55
FAT	+1.009
%RP	+1.47

LAGRAND NEW DESIGN 878 SONS

45 LaGrand New Design 4063

Birth Date: 1-9-2004 Bull 14682121 Tattoo: 4063

#B/R New Design 036
Bon View New Design 878
#13062750 Bon View Gammer 85

#VDAR New Trend 315
B/R Blackcap Empress 76
#Bon View Bando 598
Bon View Gammer 233

#Krugerrand of Donamere 490
Roth Lady Bell 8091
13255088 Lady Bell E119 of MAF

#CH Stacker 7040
Donamere Bachel Beauty 288
Chateaus Empire HB 024
Lady Bell J118 of MAF

A low birth weight balanced EPD prospect with an individual birth ratio of 86 coupled with individual weaning and yearling ratios of 102 and 101 respectively in the competitive performance program at LaGrand Angus Ranch from a field of 325 contemporaries.

The dam of this bull is backed by the high-performance genetics of the Pathfinder Sire Krugerrand of Donamere 490.

BW	205-DAY	RATIO	365-DAY	RATIO
69	731	102	1272	101

Performance	
BW	+1.0
VW	+4.0
YW	+7.5
MILK	+2.2

Carcass	
CW	+1.12
MARB	+1.19
RE	+1.20
FAT	+1.006
%RP	+1.01

Ultrasound	
%IMF	+1.01
RE	+1.27
FAT	+1.016
%RP	+1.36



HA RITO LADY 4167 - The \$50,000 flush sister to the grandam of Lot 49.

46 LaGrand New Design 4238

Birth Date: 1-19-2004 Bull 14682234 Tattoo: 4238

#B/R New Design 036
Bon View New Design 878
#13062750 Bon View Gammer 85

#VDAR New Trend 315
B/R Blackcap Empress 76
#Bon View Bando 598
Bon View Gammer 233

Bon View Bando 1394
Roth Pride 2722
+14331580 Andora Coquette Pride 644

#Bon View Bando 598
Bon View Erianna 131
#Hoff Balancer SC 7109
Andora Coquette Pride 861

A blending of the proven genetics of Bon View New Design 878 and Bon View Bando 1394, sires who were bred at Bon View Farm, the site of the current LaGrand Angus Ranch.

The dam of this bull was produced in the embryo program at LaGrand.

BW	205-DAY	RATIO	365-DAY	RATIO
88	694	97	1323	105

Performance	
BW	+3.3
VW	+4.2
YW	+8.6
MILK	+2.4

Carcass	
CW	+1.13
MARB	+1.27
RE	+1.18
FAT	+1.010
%RP	-1.06

Ultrasound	
%IMF	+1.14
RE	+1.13
FAT	+1.006
%RP	-1.14

49 LaGrand New Design 4345

Birth Date: 2-2-2004 Bull 14682290 Tattoo: 4345

#B/R New Design 036
Bon View New Design 878
#13062750 Bon View Gammer 85

#VDAR New Trend 315
B/R Blackcap Empress 76
#Bon View Bando 598
Bon View Gammer 233

#CH 054 Rito 0100
Roth Lady 9016
+13273063 +HA Rito Lady 4166

#Rito 054 GDAR
#Blackbird of CH 7009
#CH Stacker 7040
H 96 Band Lady 3714

This son of the Pathfinder Sire Bon View New Design

878 has individual weaning and yearling ratios of 104 and 105 respectively from a dam with a progeny weaning ratio of 104 on three calves and a progeny yearling ratio of 104 on four head coupled with a progeny IMF ratio of 111 on two head. The grandam is a flush sister to the \$50,000 HA Rito Lady 4167.

BW	205-DAY	RATIO	365-DAY	RATIO
99	746	104	1328	105

Performance	
BW	+3.9
VW	+3.9
YW	+7.6
MILK	+2.7

Carcass	
CW	+1.7
MARB	+1.16
RE	+1.08
FAT	+1.012
%RP	-1.13

Ultrasound	
%IMF	+1.12
RE	+1.24
FAT	+1.002
%RP	+1.29

47 LaGrand New Design 4294

Birth Date: 1-26-2004 Bull 14682344 Tattoo: 4294

#B/R New Design 036
Bon View New Design 878
#13062750 Bon View Gammer 85

#VDAR New Trend 315
B/R Blackcap Empress 76
#Bon View Bando 598
Bon View Gammer 233

#Rockn D Ambush 1531
JR Eriskay 025L
13800840 #JR Eriskay 151G

#Paramont Ambush 2172
MS Blackcap Band of RD 1301
+JR Buccaneer 052E
JR Eriskay 061C

Ranking in the top ten percent among non-parent

bulls for Ultrasound Ribeye Area EPD and in the top 15 percent for both Weaning Weight EPD and Yearling Weight EPD, this bull earned individual weaning and yearling ratios of 109 from a dam who balances a progeny birth ratio of 96 with progeny weaning and yearling ratios of 109 and 106 respectively on two calves along with a progeny IMF ratio of 126 and a progeny ultrasound ribeye ratio of 103 on one head. The grandam is a Pathfinder Dam.

BW	205-DAY	RATIO	365-DAY	RATIO
89	781	109	1378	109

Performance	
BW	+2.5
VW	+4.6
YW	+8.3
MILK	+2.6

Carcass	
CW	+1.6
MARB	+1.32
RE	+1.18
FAT	+1.002
%RP	+1.11

Ultrasound	
%IMF	+1.28
RE	+1.48
FAT	+1.018
%RP	+1.34

50 LaGrand New Design 4371

Birth Date: 2-6-2004 Bull 14682360 Tattoo: 4371

#B/R New Design 036
Bon View New Design 878
#13062750 Bon View Gammer 85

#VDAR New Trend 315
B/R Blackcap Empress 76
#Bon View Bando 598
Bon View Gammer 233

QLC Stats 060J
Roth Lucy 1238
13841545 +Roth Lucy 9505

#+Krugerrand Merger 34 (FR)
#QLC B17 Evilina X516A
#Paramont Ambush 2172
VDAR Lucy 5156

A paternal brother to the popular WCC Special Design

L309 backed by the herd sire producing Lucy and Gammer families.

BW	205-DAY	RATIO	365-DAY	RATIO
94	705	98	1207	96

Performance	
BW	+4.0
VW	+3.7
YW	+7.0
MILK	+2.8

Carcass	
CW	+1.0
MARB	+1.21
RE	+1.08
FAT	+1.009
%RP	-1.01

Ultrasound	
%IMF	+1.05
RE	+1.60
FAT	+1.001
%RP	+1.76

48 LaGrand New Design 4306

Birth Date: 1-27-2004 Bull 14682178 Tattoo: 4306

#B/R New Design 036
Bon View New Design 878
#13062750 Bon View Gammer 85

#VDAR New Trend 315
B/R Blackcap Empress 76
#Bon View Bando 598
Bon View Gammer 233

#Krugerrand of Donamere 490
North Fork Foxy Lucy 8237
+13132489 +North Fork Foxy Lucy 5009

#CH Stacker 7040
Donamere Bachel Beauty 288
#N Bar Emulation EXT
Finks 118 of 92 8E8

This paternal brother to the popular WCC Special

Design L309 by the Pathfinder Sire Bon View New Design 878 was produced from a dam by the Pathfinder Sire Krugerrand of Donamere 490.

BW	205-DAY	RATIO	365-DAY	RATIO
95	700	98	1298	103

Performance	
BW	+3.4
VW	+4.3
YW	+8.7
MILK	+2.5

Carcass	
CW	+1.14
MARB	+1.20
RE	+1.22
FAT	+1.011
%RP	-1.04

Ultrasound	
%IMF	+1.12
RE	+1.26
FAT	+1.017
%RP	-1.29



James Luke, our resident Lone Ranger!

LAGRAND NEW DESIGN 1407 SONS



RALLY MISSIE 663 - The grandam of Lot 53.

51 LaGrand New Design 4178

Birth Date: 1-14-2004 Bull 14695554 Tattoo: 4178

#B/R New Design 036 #VDAR New Trend 315
Bon View New Design 1407 B/R Blackcap Empress 76
#12783540 Bon View Pride 664 #+GAR Sleep Easy 1009
#Bon View Pride 1551

#Famous 7001 #SAF Fame
Furtados Famous Eborea 176 TK Karen 1369
14073501 Furtados Trans Eborea 652 #Transformer 100 EAR
Furtados Prom PP Eborea 125

A balanced EPD herd sire prospect by the popular and proven Pathfinder Sire Bon View New Design 1407 with an individual birth ratio of 89 coupled with an individual weaning ratio of 103.

The dam of this bull has a progeny birth ratio of 89 combined with a progeny weaning ratio of 106 on two calves.

BW	205-DAY	RATIO	365-DAY	RATIO
76	736	103	1194	95

Performance	
BW	+12
WW	+44
YW	+80
MILK	+29

Carcass	
CW	+1
MARB	+44
RE	+11
FAT	-0.06
%RP	+18

Ultrasound	
%IMF	+39
RE	+22
FAT	+1.004
%RP	+20

52 LaGrand New Design 4205

Birth Date: 1-16-2004 Bull 14695555 Tattoo: 4205

#B/R New Design 036 #VDAR New Trend 315
Bon View New Design 1407 B/R Blackcap Empress 76
#12783540 Bon View Pride 664 #+GAR Sleep Easy 1009
#Bon View Pride 1551

#Sitz SLS Rainmaker 7596 #GDAR Rainmaker 340
North Fork Missy 1013 SLS Barbara Perfection 2571
14052773 North Fork Missy 9034 North Fork Mandate 7072
North Fork Erroline 3098

A high-performance son of Bon View New Design 1407 from a dam by Sitz SLS Rainmaker 7596. The dam of this bull was bred in the noted North Fork Herd in Montana.

BW	205-DAY	RATIO	365-DAY	RATIO
90	676	94	1249	99

Performance	
BW	+2.8
WW	+40
YW	+84
MILK	+24

Carcass	
CW	-1.4
MARB	+26
RE	+13
FAT	-0.005
%RP	+25

Ultrasound	
%IMF	+21
RE	-1.02
FAT	+1.004
%RP	-1.19

53 LaGrand New Design 4237

Birth Date: 1-19-2004 Bull 14695557 Tattoo: 4237

#B/R New Design 036 #VDAR New Trend 315
Bon View New Design 1407 B/R Blackcap Empress 76
#12783540 Bon View Pride 664 #+GAR Sleep Easy 1009
#Bon View Pride 1551

#Bon View Bando 598 #Tehama Bando 155
Roth Missie 1585 #Bon View Dora 56
+13928299 Rally Missie 663 #+PS High Pockets
Rally Missie 660

A son of the Pathfinder Sire Bon View New Design 1407 from a dam produced in the embryo program at LaGrand Angus Ranch.

This bull has individual weaning and yearling ratios of 101 and 107 respectively from a dam with a progeny weaning ratio of 104 on two calves descending from a noted grandam who has served as an important embryo donor.

BW	205-DAY	RATIO	365-DAY	RATIO
89	722	101	1346	107

Performance	
BW	+1.5
WW	+39
YW	+83
MILK	+28

Carcass	
CW	+2
MARB	+36
RE	+0.9
FAT	-1.009
%RP	+1.17

Ultrasound	
%IMF	+31
RE	+1.16
FAT	+1.024
%RP	-1.26

54 LaGrand New Design 4321

Birth Date: 1-28-2004 Bull 14695559 Tattoo: 4321

#B/R New Design 036 #VDAR New Trend 315
Bon View New Design 1407 B/R Blackcap Empress 76
#12783540 Bon View Pride 664 #+GAR Sleep Easy 1009
#Bon View Pride 1551

#Whitstone Widespread MB #N Bar Emulation EXT
Diablo Echo 421 MB Rachel 2173
13825573 +Diablo Echo 576 #Krugerrand of Donamere 490
Diablo Echo 774

This low birth weight herd sire prospect is a son of the proven calving-ease and carcass sire Bon View New Design 1407 from a dam backed by the performance genetics of Whitstone Widespread MB and Krugerrand of Donamere 490.

The dam of this bull has a progeny IMF ratio of 132 and a progeny ultrasound ribeye ratio of 112 on one head.

BW	205-DAY	RATIO	365-DAY	RATIO
70	594	83	1157	92

Performance	
BW	-3
WW	+34
YW	+77
MILK	+23

Carcass	
CW	+0
MARB	+32
RE	+13
FAT	+1.004
%RP	+1.10

Ultrasound	
%IMF	+14
RE	+18
FAT	+1.004
%RP	+1.09

55 LaGrand New Design 4358

Birth Date: 2-4-2004 Bull 14695560 Tattoo: 4358

#B/R New Design 036 #VDAR New Trend 315
Bon View New Design 1407 B/R Blackcap Empress 76
#12783540 Bon View Pride 664 #+GAR Sleep Easy 1009
#Bon View Pride 1551

#+VDAR Lucys Boy #Traveler 1148 GDAR
Rocky Mt Beauty 064 +VDAR Pine Drive Lucy 5
+13633217 +FSHK Beauty 337 #Traveler 124 GDAR
#VDAR Beauty 930

This son of the proven sire Bon View New Design 1407 is from the noted Beauty family produced from a dam backed by the Pathfinder Sire VDAR Lucys Boy and Traveler 124 GDAR.

BW	205-DAY	RATIO	365-DAY	RATIO
88	682	95	1316	104

Performance	
BW	+1.7
WW	+35
YW	+80
MILK	+29

Carcass	
CW	-1.3
MARB	+40
RE	+11
FAT	+0.009
%RP	+1.07

Ultrasound	
%IMF	+38
RE	+35
FAT	+1.044
%RP	-1.26



BON VIEW NEW DESIGN 1407- Reference Sire C

C Bon View New Design 1407

Birth Date: 2-23-1997 Bull #12783540 Tattoo: 1407

#VDAR New Trend 315 #AAR New Trend
B/R New Design 036 #VDAR Lucy 704
#11418151 B/R Blackcap Empress 76 #K&K Top Gun
+QLC A70 Blkcp Empress E43T

#+GAR Sleep Easy 1009 #Tehama Bando 155
Bon View Pride 664 Blacklass GAR 103
12139985 #Bon View Pride 1551 Bon View Paragon 2108
Bon View Pride 639

FOR REFERENCE ONLY.
This popular and proven Pathfinder Sire sold one-third interest for \$275,000 and went on to be one of the most widely used sires in the Angus breed and proven sire of balanced calving-ease, growth, maternal and carcass genetics. The \$100,000 dam of this bull came to LaGrand Angus Ranch as the top-selling cow of the first Southern Cattle Company sale.

Performance	
BW	-1
WW	+42
YW	+90
MILK	+35

Carcass	
CW	-10
MARB	+62
RE	+10
FAT	-0.12
%RP	+35

Ultrasound	
%IMF	+57
RE	+47
FAT	+0.16
%RP	+28

LAGRAND NEW DESIGN 1407 AND NEW FRONTIER SONS



SIR WMS LUCY OX80 - The dam of Lot 59.



LAGRAND COLD FRONT 421 - Lot 59

56

LaGrand New Design 4505

Birth Date: 3-7-2004 Bull +14695561 Tattoo: 4505

BW	205-DAY	RATIO	365-DAY	RATIO
95	722	ET	1189	ET

Ultrasound	
%IMF	+1.16
RE	+1.09
FAT	+1.006
%RP	-1.13

57

LaGrand New Design 4511

Birth Date: 3-7-2004 Bull +14695562 Tattoo: 4511

#B/R New Design 036
Bon View New Design 1407
#12783540 Bon View Pride 664

#VDAR New Trend 315
B/R Blackcap Empress 76
#+GAR Sleep Easy 1009
#Bon View Pride 1551

+GDAR SVF Russ 184B
Broken Arrow Roth MS RUSS814
13047374 #Broken Arrow Eileenlass 75

#GDAR Executive 727
+GDAR Forever Lady 719
#+VDAR New Trend 802
LS Eileen Lass 51

BW	205-DAY	RATIO	365-DAY	RATIO
94	722	ET	1314	ET

Performance	
BW	+2.8
WW	+1.47
YW	+1.89
MILK	+2.27

Carcass	
CW	-1.4
MARB	+2.27
RE	+1.08
FAT	-1.005
%RP	+1.19

Ultrasound	
%IMF	+1.21
RE	+1.13
FAT	+1.017
%RP	-1.31

This pair of flush brothers are sired by the Pathfinder Sire

Bon View New Design 1407 from a donor dam who records a progeny weaning ratio of 109 and a progeny yearling ratio of 108 on two natural calves, stemming from a Pathfinder granddam.

58

LaGrand Frontier 417

Birth Date: 1-27-2004 Bull 14765196 Tattoo: 417

#B/R New Design 036
B/R New Frontier 095
+13588640 White Fence Pride H1

#VDAR New Trend 315
B/R Blackcap Empress 76
#Connealy Dateline
#Pleasant Pill of Conanga

#JR Juice 2005
RA New Erica 873
+14010360 RA New Erica

#Candolier Forever 376
MG S Black Diamond
+R&J Lurch 303
Garney Erica 9117

BW	205-DAY	RATIO	365-DAY	RATIO
N/A	779	103	N/A	N/A

Performance	
BW	+3.5
WW	+1.44
YW	+1.74
MILK	+1.30

Carcass	
CW	+1.5
MARB	+1.28
RE	+1.09
FAT	-1.007
%RP	+1.07

Ultrasound	
%IMF	+1.28
RE	+1.10
FAT	+1.002
%RP	-1.09

This son of the popular Accelerated Genetics sire B/R New Frontier 095 was produced from a dam by the high marbling and high maternal Pathfinder Sire JR Juice 2005.

The dam of this bull has a progeny weaning ratio of 117 on two calves combined with a progeny yearling ratio of 111 and a progeny IMF ratio of 127 on one head.

59

La Grand Cold Front 421

Birth Date: 2-2-2004 Bull 14765200 Tattoo: 421

#B/R New Design 036
B/R New Frontier 095
+13588640 White Fence Pride H1

#VDAR New Trend 315
B/R Blackcap Empress 76
#Connealy Dateline
#Pleasant Pill of Conanga

#Famous 7001
Sir Wms Lucy OX80
13551973 Sir Wms Lucy 40X8

#SAF Fame
TK Karen 1369
#N Bar Emulation EXT
#Basin Lucy 340X

BW	205-DAY	RATIO	365-DAY	RATIO
87	761	96	1190	97

This son of the popular high-performance sire B/R New Frontier 095 was produced from a dam with a progeny birth ratio of 96 combined with a progeny weaning ratio of 112 on two calves by the now-deceased Pathfinder Sire and former champion Famous 7001.

The dam of this bull was a feature of a past LaGrand sale to Stewart Angus Farms.

Performance	
BW	+3.7
WW	+4.5
YW	+1.83
MILK	+2.9

Carcass	
CW	+1.13
MARB	+1.31
RE	+1.26
FAT	-1.007
%RP	+1.20

Ultrasound	
%IMF	+1.15
RE	+1.17
FAT	+1.002
%RP	+1.14

60

La Grand New Frontier 434

Birth Date: 3-13-2004 Bull 14765209 Tattoo: 434

#B/R New Design 036
B/R New Frontier 095
+13588640 White Fence Pride H1

#VDAR New Trend 315
B/R Blackcap Empress 76
#Connealy Dateline
#Pleasant Pill of Conanga

#N Bar Emulation EXT
EF Sunny Lady 631
12724254 Pride of SVF 7D

#Emulation N Bar 5522
N Bar Primrose 2424
#Tehama Bando 155
+Pride of SVF 191B

BW	205-DAY	RATIO	365-DAY	RATIO
90	785	99	1186	100

This son of the popular B/R New Frontier 095 was produced from a dam by the established Pathfinder Sire N Bar Emulation EXT from the noted Pride family.

A maternal sister weaned her first calf with a ratio of 103.

Performance	
BW	+3.2
WW	+4.7
YW	+8.5
MILK	+2.6

Carcass	
CW	+1.11
MARB	+1.24
RE	+1.19
FAT	-1.003
%RP	+1.09

Ultrasound	
%IMF	+1.33
RE	+1.02
FAT	+1.0
%RP	+1.21

D

B/R New Frontier 095

Birth Date: 1-31-2000 Bull +13588640 Tattoo: 095

#VDAR New Trend 315
B/R New Design 036
#11418151 B/R Blackcap Empress 76

#AAR New Trend
#VDAR Lucy 704
#K&K Top Gun
+QLC A70 Blkcp Empress E43T

#Connealy Dateline
White Fence Pride H1
13084555 #Pleasant Pill of Conanga

#DHD Traveler 6807
#Eila Eila of Conanga
#Tehama Bando 155
Pleasant Pride of Conanga

Performance	
BW	+3.1
WW	+4.9
YW	+9.1
MILK	+3.4

Carcass	
CW	+1.3
MARB	+3.9
RE	+3.2
FAT	-0.23
%RP	+4.2

Ultrasound	
%IMF	+3.8
RE	+2.0
FAT	-0.001
%RP	+1.1

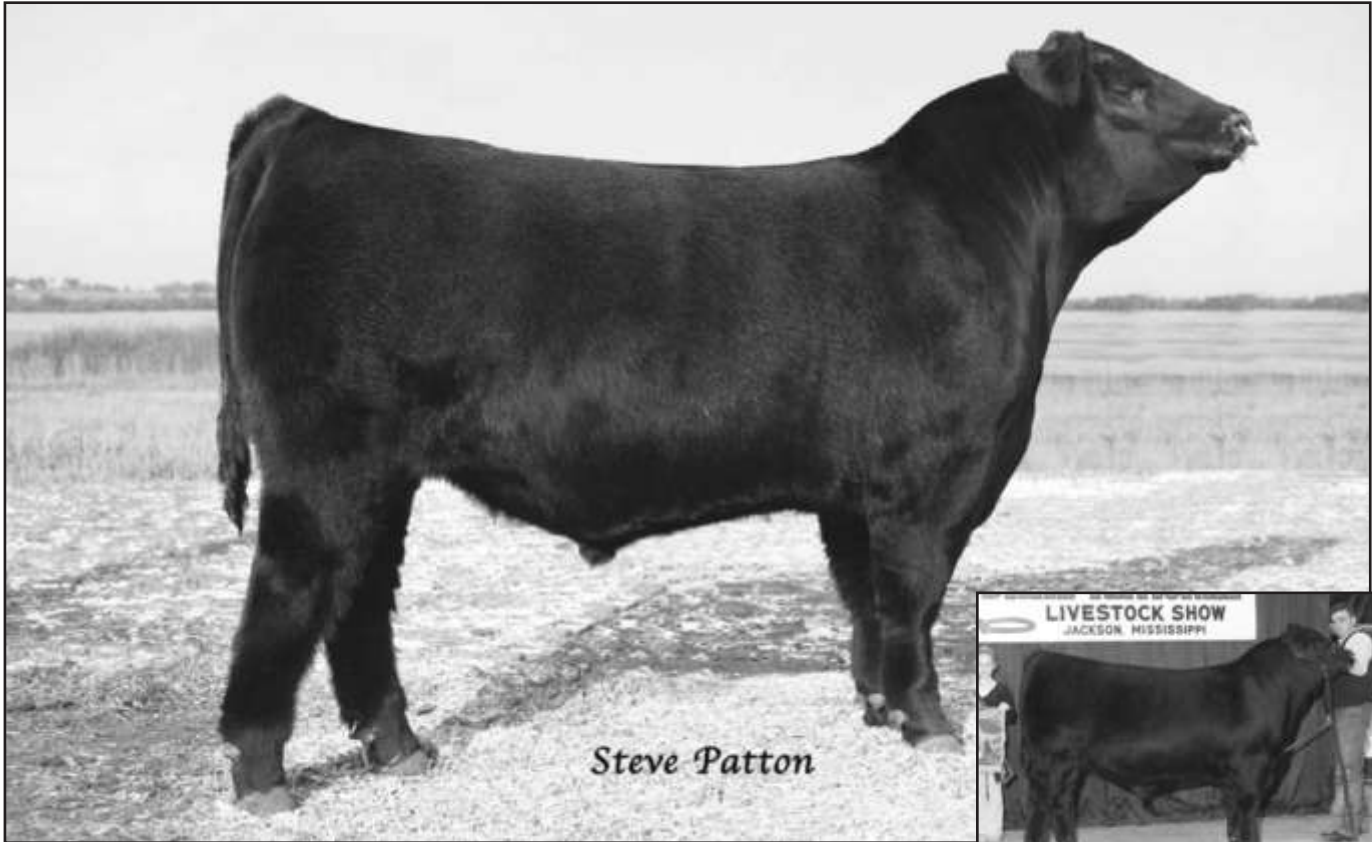
FOR REFERENCE ONLY.

Featuring sons of this popular Accelerated Genetics sire who offers a combination of high-performance, high maternal and high marbling genetics. This son of B/R New Design 036 was produced from the \$100,000 White Fence Pride H1 who is a full sister to Connealy Frontline. A daughter reigned as the Grand Champion Female of the 2005 National Western.

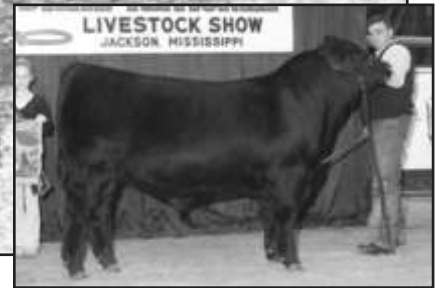


B/R NEW FRONTIER 095 - Reference Sire D

LAGRAND NEW HORIZON SONS



LAGRAND NEW HORIZON 4211 - Lot 61



The 2005 Dixie National ROV Junior Bull Calf Champion

61 LaGrand New Horizon 4211

Birth Date: 1-17-2004 Bull 14682377 Tattoo: 4211

#B/R New Design 323
PVF New Horizon 001
+13606093 Hyline Ellen 410

#B/R New Design 036
B/R Ruby of Tiffany 155
#Hyline Travel Agent
#Hyline Ellen 9062

#N Bar Emulation EXT
Partisover Burgess 616
12606370 Partisover Burgess 431

#Emulation N Bar 5522
N Bar Primrose 2424
#QAS Traveler 23-4
+Partisover Burgess 162

NATIONAL WESTERN BULL.

Ranking in the top one percent among non-parent bulls for both Weaning Weight EPD and Yearling Weight EPD, this high-performance prospect earned individual weaning and yearling ratios of 131 and 116 respectively from a dam with a progeny weaning ratio of 108 on three calves coupled with a progeny IMF ratio of 112 on four head and a progeny ultrasound rib-eye ratio of 102 on five head.

This bull is from the same Burgess family that produced JLB Exacto 416.

BW	205-DAY	RATIO	365-DAY	RATIO
84	936	131	1533	116

Performance	
BW	+3.7
WW	+63
YW	+104
MILK	+18

Carcass	
CW	+7
MARB	+0.05
RE	+2.2
FAT	+0.002
%RP	+1.16

Ultrasound	
%IMF	-1.01
RE	+1.42
FAT	+1.012
%RP	-1.07

62 LaGrand New Horizon 4111

Birth Date: 1-4-2004 Bull 14682225 Tattoo: 4111

#B/R New Design 323
PVF New Horizon 001
+13606093 Hyline Ellen 410

#B/R New Design 036
B/R Ruby of Tiffany 155
#Hyline Travel Agent
#Hyline Ellen 9062

#Krugerrand of Donamere 490
North Fork Lucy 08
+13821274 #VDAR Lucy 425

#CH Stacker 7040
Donamere Bachel Beauty 288
#VDAR New Trend 315
+VDAR Lucy 920

An intriguing herd sire prospect sired by PVF New

BW	205-DAY	RATIO	365-DAY	RATIO
76	752	105	1254	100

Horizon 001 with a modest individual birth ratio of 87 combined with an individual weaning ratio of 105 from a dam by the Pathfinder Sire Krugerrand of Donamere 490. The Pathfinder grandam of this bull earned an outstanding production record.

Performance	
BW	+1.6
WW	+47
YW	+85
MILK	+19

Carcass	
CW	+9
MARB	+0.08
RE	+3.0
FAT	-1.013
%RP	+1.35

Ultrasound	
%IMF	-1.08
RE	+1.33
FAT	-1.003
%RP	+1.20



PVF NEW HORIZON 001 - Reference Sire E

E PVF New Horizon 001

Birth Date: 1-2-2000 Bull +13606093 Tattoo: 001

#B/R New Design 036
B/R New Design 323
#11928774 B/R Ruby of Tiffany 155

#VDAR New Trend 315
B/R Blackcap Empress 76
VDAR Pine Drive 251
Tiffany BR

#Hyline Travel Agent
Hyline Ellen 410
12137823 #Hyline Ellen 9062

#QAS Traveler 23-4
Hyline Pride Lucy 9043
#Hyline Oscar 555
#Hyline Ellen 472

FOR REFERENCE ONLY.

The LaGrand featured herd sire used extensively in the natural service breeding program by the longtime high marbling leader B/R New Design 323. This high growth and high Ribeye Area EPD sire is the sire of the 2003 North American International Grand Champion Female and numerous other successful progeny. This bull was produced in the Prairie View program in Illinois from a dam bred at Hyline Angus Ranch in Montana descending from a grandam who is a second generation Pathfinder Dam.

Performance	
BW	+3.6
WW	+50
YW	+93
MILK	+13

Carcass	
CW	+4
MARB	+0.02
RE	+3.36
FAT	-0.18
%RP	+5.5

Ultrasound	
%IMF	-2.0
RE	+4.7
FAT	+0.006
%RP	+2.6

LAGRAND NEW HORIZON SONS



Steve Patton

LAGRAND NEW HORIZON 4129 - Lot 63

63 LaGrand New Horizon 4129

Birth Date: 1-7-2004 Bull 14682265 Tattoo: 4129

#B/R New Design 323
PVF New Horizon 001
+13606093 Hyline Ellen 410

#B/R New Design 036
B/R Ruby of Tiffany 155
#Hyline Travel Agent
#Hyline Ellen 9062

#Stevenson Fortune 425C
Roth Blackbird Princess 1111
13849360 Bon View Blkbd Progress 1138
Gardens Fortune 9213 S2
#JRS Enchantress 235Z
#B/R New Design 323
Bon View Blkbd Progress 496

NATIONAL WESTERN BULL.

This powerful son of the LaGrand featured sire PVF New Horizon 001 has an individual weaning ratio of 105 produced as the first calf from a dam sired by Stevenson Fortune 425C. This bull carries on a famous family developed in the Bon View program.

BW	205-DAY	RATIO	365-DAY	RATIO
92	753	105	1313	99

Performance	
BW	+2.7
WW	+45
YW	+76
MILK	+15

Carcass	
CW	+2
MARB	+1.11
RE	+3.32
FAT	-1.012
%RP	+1.47

Ultrason	
%IMF	-1.04
RE	+1.19
FAT	+1.004
%RP	+1.28

65 LaGrand New Horizon 4244

Birth Date: 1-20-2004 Bull 14682240 Tattoo: 4244

#B/R New Design 323
PVF New Horizon 001
+13606093 Hyline Ellen 410

#B/R New Design 036
B/R Ruby of Tiffany 155
#Hyline Travel Agent
#Hyline Ellen 9062

#AAR New Trend
Broken Arrow Forever Lady 04
+13611532 +SVF Forever Lady 0400

#VDAR Shoshone 548
Donna AAR 74
#+Skarship Saratoga
#Forever Lady 163 GDAR

A son of the LaGrand featured sire PVF New Horizon 001 from the noted Forever Lady family. The granddam of this bull is a flush sister to the million dollar plus producer SVF Forever Lady 1120.

BW	205-DAY	RATIO	365-DAY	RATIO
98	630	88	1209	96

Performance	
BW	+5.2
WW	+36
YW	+76
MILK	+14

Carcass	
CW	+5
MARB	+1.01
RE	+2.28
FAT	-1.007
%RP	+1.32

Ultrason	
%IMF	+1.30
RE	+1.23
FAT	-1.006
%RP	+1.22

64 LaGrand New Horizon 4233

Birth Date: 1-19-2004 Bull 14682226 Tattoo: 4233

#B/R New Design 323
PVF New Horizon 001
+13606093 Hyline Ellen 410

#B/R New Design 036
B/R Ruby of Tiffany 155
#Hyline Travel Agent
#Hyline Ellen 9062

#TC Stockman 365
Pride of North Fork 8075
+13133382 +Pride of SVF 9562

#TC Stockman
TC Pride 0014
#GV Cornhusker 584
Pride of Hyline 8040

This January herd sire prospect is typical of the sons of the LaGrand herd sire PVF New Horizon 001.

This bull is from the noted Pride family descending from Pride of Hyline 8040 that also produced Hyline Right Time 338.

BW	205-DAY	RATIO	365-DAY	RATIO
96	665	93	1244	99

Performance	
BW	+4.5
WW	+39
YW	+78
MILK	+19

Carcass	
CW	+5
MARB	+1.11
RE	+1.24
FAT	-1.019
%RP	+1.39

Ultrason	
%IMF	-1.12
RE	-1.04
FAT	-1.001
%RP	-1.30

66 LaGrand New Horizon 4293

Birth Date: 1-26-2004 Bull 14682342 Tattoo: 4293

#B/R New Design 323
PVF New Horizon 001
+13606093 Hyline Ellen 410

#B/R New Design 036
B/R Ruby of Tiffany 155
#Hyline Travel Agent
#Hyline Ellen 9062

#Krugerrand of Donamere 490
TJR B50 Erica Lass
12365324 QLC A16 Erica A537S

#CH Stacker 7040
Donamere Bachel Beauty 288
#+SVF Pistolero
#6 Bar D Trojan Erica 180

A son of the LaGrand herd sire PVF New Horizon 001 with outcross genetics from a dam by the Pathfinder Sire Krugerrand of Donamere 490. This bull traces to a Pathfinder third dam.

BW	205-DAY	RATIO	365-DAY	RATIO
97	641	90	1286	103

Performance	
BW	+4.3
WW	+38
YW	+79
MILK	+11

Carcass	
CW	+1.10
MARB	+1.00
RE	+1.33
FAT	-1.017
%RP	+1.43

Ultrason	
%IMF	-1.20
RE	+1.20
FAT	+1.004
%RP	-1.15

LAGRAND NEW HORIZON SONS



TK KAREN 1369 - The grandam of Lots 67, 68, and 69.

67 LaGrand New Horizon 4331

Birth Date: 1-30-2004 Bull +14682261 Tattoo: 4331

BW	205-DAY	RATIO	365-DAY	RATIO
89	587	ET	1160	ET

Ultrasound	
%IMF	+1.04
RE	+1.64
FAT	+1.011
%RP	+1.62

68 LaGrand New Horizon 4842

Birth Date: 2-21-2004 Bull +14815508 Tattoo: 4842

#B/R New Design 323
PVF New Horizon 001
+13606093 Hyline Ellen 410

#B/R New Design 036
B/R Ruby of Tiffany 155
#Hyline Travel Agent
#Hyline Ellen 9062

#GAR Precision 1680
Roth Karen 1080
+13850083 TK Karen 1369

#Tehama Bando 155
9J9 GAR 856
#AAR New Trend
#VDAR Karen 978

This pair of flush brothers from the embryo program

BW	205-DAY	RATIO	365-DAY	RATIO
77	738	ET	1066	ET

Performance	
BW	+3.4
WW	+4.0
YW	+7.8
MILK	+1.7

Carcase	
CW	+1.0
MARB	+1.1
RE	+1.36
FAT	-1.009
%RP	+1.37

Ultrasound	
%IMF	-1.01
RE	+1.52
FAT	-1.004
%RP	+1.59

69 LaGrand New Horizon 4499

Birth Date: 3-5-2004 Bull 14682164 Tattoo: 4499

#B/R New Design 323
PVF New Horizon 001
+13606093 Hyline Ellen 410

#B/R New Design 036
B/R Ruby of Tiffany 155
#Hyline Travel Agent
#Hyline Ellen 9062

#Alberda Traveler 416
Roth Karen 1204
+13857587 TK Karen 1369

#DHD Traveler 6807
Alberda Queen Kimberly 222
#AAR New Trend
#VDAR Karen 978

This full brother-in-blood to Lots 67 and 68 is sired by PVF New Horizon 001 from a dam who is a maternal sister to the now-deceased champion Famous 7001.

BW	205-DAY	RATIO	365-DAY	RATIO
100	716	99	1246	99

Performance	
BW	+4.9
WW	+4.0
YW	+7.9
MILK	+1.9

Carcase	
CW	+1.2
MARB	+1.16
RE	+1.19
FAT	-1.006
%RP	+1.25

Ultrasound	
%IMF	+1.05
RE	+1.34
FAT	+1.006
%RP	+1.15

The dam of this bull has a progeny weaning ratio of 107 on two natural calves and a progeny yearling ratio of 109 on one head.



JAUER 9 TRAVELER 227 039 - The dam of Lot 73.

70 LaGrand New Horizon 4325

Birth Date: 1-29-2004 Bull 14682247 Tattoo: 4325

#B/R New Design 323
PVF New Horizon 001
+13606093 Hyline Ellen 410

#B/R New Design 036
B/R Ruby of Tiffany 155
#Hyline Travel Agent
#Hyline Ellen 9062

RP 3RD Bushwacker
Roth Burgess M017
14245534 #UI EXT Miss G087

#BCC Bushwacker 41-93
LB Queen of Spades
#N Bar Emulation EXT
+Brost Burgess 043

This high-performance son of PVF New Horizon 001

BW	205-DAY	RATIO	365-DAY	RATIO
80	754	105	1413	112

combines an individual birth ratio of 99 with individual weaning and yearling ratios of 105 and 112 respectively produced as the first calf from a two-year-old dam.

The Pathfinder grandam of this bull was produced from a dam who is a full sister to the dam of JLB Exacto 416.

Performance	
BW	+2.9
WW	+5.2
YW	+9.7
MILK	+2.2

Carcase	
CW	+1.8
MARB	+1.10
RE	+1.26
FAT	-1.020
%RP	+1.45

Ultrasound	
%IMF	-1.08
RE	+1.64
FAT	+1.003
%RP	+1.22

71 LaGrand New Horizon 4340

Birth Date: 1-31-2004 Bull 14682278 Tattoo: 4340

#B/R New Design 323
PVF New Horizon 001
+13606093 Hyline Ellen 410

#B/R New Design 036
B/R Ruby of Tiffany 155
#Hyline Travel Agent
#Hyline Ellen 9062

#Westwind Rito 8503 DJH 019
GAR Westwind 1746
12707692 +GARRR Traveler 153

#WH 8704 Rito 8503 RR
#GV Lassie Pride 86 88
#RR Traveler 5204
GAR Bando 81

A son of PVF New Horizon 001 from a dam bred at Gardiner Angus Ranch in Kansas.

BW	205-DAY	RATIO	365-DAY	RATIO
88	732	102	1316	105

This bull has individual weaning and yearling ratios of 102 and 105 respectively from a dam who balances a progeny birth ratio of 97 with a progeny weaning ratio of 104 on five calves and a progeny yearling ratio of 108 on four head along with a progeny IMF ratio of 105 on three head.

Performance	
BW	+1.7
WW	+4.1
YW	+8.1
MILK	+2.0

Carcase	
CW	+1.2
MARB	+1.03
RE	+1.12
FAT	-1.006
%RP	+1.17

Ultrasound	
%IMF	-1.03
RE	+1.09
FAT	+1.013
%RP	-1.26

72 LaGrand New Horizon 4333

Birth Date: 1-31-2004 Bull 14682266 Tattoo: 4333

#B/R New Design 323
PVF New Horizon 001
+13606093 Hyline Ellen 410

#B/R New Design 036
B/R Ruby of Tiffany 155
#Hyline Travel Agent
#Hyline Ellen 9062

+GDAR SVF Russ 184B
Broken Arrow Lady Russ 733
12973527 +HR Wendy 313

#GDAR Executive 727
+GDAR Forever Lady 719
#+OSU Precision 679B
KMR Wendy 508

Ranking in the top one percent among non-parent

BW	205-DAY	RATIO	365-DAY	RATIO
99	829	116	1403	112

bulls for both Weaning Weight EPD and Yearling Weight EPD, this high-performance son of PVF New Horizon 001 has individual weaning and yearling ratios of 116 and 112 respectively from a dam who records progeny weaning and yearling ratios of 105 and 108 respectively on three calves.

This bull is from the high growth Wendy family.

Performance	
BW	+5.6
WW	+5.9
YW	+10.2
MILK	+1.4

Carcase	
CW	+1.5
MARB	+1.05
RE	+1.24
FAT	-1.011
%RP	+1.34

Ultrasound	
%IMF	-1.16
RE	+1.11
FAT	+1.004
%RP	-1.03

73 LaGrand New Horizon 4361

Birth Date: 2-5-2004 Bull 14682311 Tattoo: 4361

#B/R New Design 323
PVF New Horizon 001
+13606093 Hyline Ellen 410

#B/R New Design 036
B/R Ruby of Tiffany 155
#Hyline Travel Agent
#Hyline Ellen 9062

Jauer 1148 Traveler 9 747
Jauer 9 Traveler 227 039
11806663 Jauer Stretch 039 57

#Traveler 1148 GDAR
Jauer Pine Drive 747 441
#Mc Cumber Stretch 604
Jauer Jetliner 57 235

This son of PVF New Horizon 001 combines an individual

BW	205-DAY	RATIO	365-DAY	RATIO
80	741	103	1242	98

birth ratio of 92 with an individual weaning ratio of 103 produced as a natural calf from a LaGrand foundation donor selected as a feature of a past Kisseee Wallace sale in Missouri. A maternal brother sold for \$6,000 to Frey Angus Ranch in the 2004 LaGrand Angus Ranch Bull Sale.

Performance	
BW	+2.1
WW	+4.2
YW	+7.4
MILK	+1.6

Ultrasound	
%IMF	-1.08
RE	+1.23
FAT	+1.008
%RP	-1.04

LAGRAND NEW HORIZON SONS



LAGRAND NEW HORIZON 4492 - Lot 77



LAGRAND NEW HORIZON 4385 - Lot 78

74 LaGrand New Horizon 4390
 Birth Date: 2-9-2004 Bull +14682378 Tattoo: 4390

BW	205-DAY	RATIO	365-DAY	RATIO
94	666	ET	1199	ET

Ultrasound	
%IMF	+0.06
RE	+0.08
FAT	+0.004
%RP	-0.05

75 LaGrand New Horizon 4456
 Birth Date: 2-22-2004 Bull +14682092 Tattoo: 4456

BW	205-DAY	RATIO	365-DAY	RATIO
85	691	ET	1277	ET

Ultrasound	
%IMF	-0.01
RE	+0.23
FAT	+0.009
%RP	-0.02

76 LaGrand New Horizon 4465
 Birth Date: 2-25-2004 Bull +14682103 Tattoo: 4465

BW	205-DAY	RATIO	365-DAY	RATIO
100	622	ET	1252	ET

Ultrasound	
%IMF	+0.05
RE	+0.12
FAT	+0.013
%RP	-0.08

77 LaGrand New Horizon 4492
 Birth Date: 3-3-2004 Bull +14682147 Tattoo: 4492

#B/R New Design 323
 PVF New Horizon 001
 +13606093 Hyline Ellen 410

#B/R New Design 036
 B/R Ruby of Tiffany 155
 #Hyline Travel Agent
 #Hyline Ellen 9062

#+GAR Sleep Easy 1009
 Andora Delia 95
 12430982 Andora Delia 20

#Tehama Bando 155
 Blacklass GAR 103
 #+SAF Power Fix
 Andora Delia 886

BW	205-DAY	RATIO	365-DAY	RATIO
108	773	ET	1391	ET

Performance	
BW	+2.3
WW	+4.3
YW	+7.8
MILK	+1.8

Carcass	
CW	+2
MARB	+0.15
RE	+0.18
FAT	-0.012
%RP	+0.37

Ultrasound	
%IMF	-0.03
RE	+0.31
FAT	+0.016
%RP	-0.25

This impressive group of flush brothers by PVF New Horizon 001 were produced from an outstanding donor dam who has a progeny weaning ratio of 104 on six natural calves and a progeny yearling ratio of 106 on five head coupled with a progeny IMF ratio of 114 and a progeny ultrasound ribeye ratio of 103 on six head. This bull is from the same family as Roth Elba 1017, the 2002 National Junior Angus Show Grand Champion Heifer.



ANDORA DELIA 95 - The dam of Lots 74 through 77.

78 LaGrand New Horizon 4385
 Birth Date: 2-8-2004 Bull 14682376 Tattoo: 4385

#B/R New Design 323
 PVF New Horizon 001
 +13606093 Hyline Ellen 410

#B/R New Design 036
 B/R Ruby of Tiffany 155
 #Hyline Travel Agent
 #Hyline Ellen 9062

+GDAR SVF Russ 184B
 Broken Arrow Roth MS RUSS808
 13047380 Brokenarrow Blacklass3904-18

#GDAR Executive 727
 +GDAR Forever Lady 719
 E&B Stackler 190
 TJR B27 Blacklass V128C

A natural son of PVF New Horizon 001 produced from a dam who has served as a valued embryo donor at LaGrand Angus Ranch. This bull has individual weaning and yearling ratios of 101 and 108 respectively from a dam who records a progeny weaning ratio of 104 on four natural calves and a progeny yearling ratio of 103 on three head coupled with a progeny IMF ratio of 101 on 21 head. Five maternal sisters weaned their first calves with an average ratio of 106.

BW	205-DAY	RATIO	365-DAY	RATIO
103	723	101	1357	108

Performance	
BW	+5.8
WW	+4.6
YW	+9.1
MILK	+1.7

Carcass	
CW	+1.5
MARB	-0.05
RE	+0.24
FAT	-0.011
%RP	+0.34

Ultrasound	
%IMF	-0.14
RE	+0.10
FAT	+0.004
%RP	-0.41

79 LaGrand New Horizon 4359
 Birth Date: 2-4-2004 Bull 14682309 Tattoo: 4359

#B/R New Design 323
 PVF New Horizon 001
 +13606093 Hyline Ellen 410

#B/R New Design 036
 B/R Ruby of Tiffany 155
 #Hyline Travel Agent
 #Hyline Ellen 9062

#+SVF GDAR 216 LTD
 Roth Lady Eraline 1575
 +13927249 Bear MTN Lady Eraline 302

#Traveler 124 GDAR
 +GDAR Forever Lady 718
 #Oneills Duke
 #Oneills Eraline 100

A high growth son of PVF New Horizon 001 with individual weaning and yearling ratios of 101 and 107 respectively to rank in the top five percent among non-parent bulls for Weaning Weight EPD and in the top three percent for Yearling Weight EPD. The grandam of this bull has served as a valued embryo donor in the LaGrand program after being a many-time champion.

BW	205-DAY	RATIO	365-DAY	RATIO
86	722	101	1341	107

Performance	
BW	+3.5
WW	+5.0
YW	+9.4
MILK	+1.4

Carcass	
CW	+1.6
MARB	+0.13
RE	+0.34
FAT	-0.008
%RP	+0.28

Ultrasound	
%IMF	-0.15
RE	+0.45
FAT	+0.003
%RP	+0.11

80 LaGrand New Horizon 4395
 Birth Date: 2-9-2004 Bull 14682382 Tattoo: 4395

#B/R New Design 323
 PVF New Horizon 001
 +13606093 Hyline Ellen 410

#B/R New Design 036
 B/R Ruby of Tiffany 155
 #Hyline Travel Agent
 #Hyline Ellen 9062

#TC Dividend 963
 Oak Ridge 6807 MS Spade 1027
 12986944 #+Oak Ridge MS 6807 Spade 985

#+Leachman Prompter
 TC Erica Eileen 6006
 #DHD Traveler 6807
 Hoff Miss Spade 3103

Ranking in the top five percent for Weaning Weight EPD and in the top ten percent for Yearling Weight EPD, this bull has individual weaning and yearling ratios of 113 and 109 respectively. Two maternal sisters collect a progeny weaning ratio of 103. The grandam is a Pathfinder Dam.

BW	205-DAY	RATIO	365-DAY	RATIO
105	811	113	1368	109

Performance	
BW	+4.2
WW	+5.0
YW	+8.7
MILK	+1.9

Carcass	
CW	+2
MARB	+0.04
RE	+0.19
FAT	-0.016
%RP	+0.36

Ultrasound	
%IMF	-0.14
RE	+0.21
FAT	+0.002
%RP	-0.11

LAGRAND NEW HORIZON SONS



STEVENSON PRIDE LADY 6368 - The Pathfinder dam of Lot 81.

81 LaGrand New Horizon 4434

Birth Date: 2-17-2004 Bull 14682065 Tattoo: 4434

#B/R New Design 323
PVF New Horizon 001
+13606093 Hyline Ellen 410

#B/R New Design 036
B/R Ruby of Tiffany 155
#Hyline Travel Agent
#Hyline Ellen 9062

#Basin Ambush 3905 (FR)
Stevenson Pride Lady 6368
#13036393 Stevenson Pride Lady 4066

#Paramont Ambush 2172
Basin Heather Bloom 48C (R)
#Basin Rainmaker 2844
+Stevenson Pride Lady 353D

The natural son from the \$42,000 second top-selling cow of the 2004 LaGrand Sale to Fluharty Farms LLC of Texas.

The Pathfinder Dam of this bull has a progeny birth ratio of 97 coupled with weaning and yearling ratios of 107 and 106 respectively on four natural calves and she has produced a multitude of successful champion progeny.

BW	205-DAY	RATIO	365-DAY	RATIO
85	692	97	1180	94

Performance	
BW	+1.5
WW	+41
YW	+75
MILK	+19
Carcass	
CW	+7
MARB	+0.1
RE	+1.5
FAT	-1.004
%RP	+1.27
Ultrasonc	
%IMF	-1.05
RE	+1.12
FAT	-1.010
%RP	+1.33

82 LaGrand New Horizon 4433

Birth Date: 2-16-2004 Bull 14682064 Tattoo: 4433

#B/R New Design 323
PVF New Horizon 001
+13606093 Hyline Ellen 410

#B/R New Design 036
B/R Ruby of Tiffany 155
#Hyline Travel Agent
#Hyline Ellen 9062

Whitestone Precision H141
B&B Zara 506
13910220 Koupal Ruth 506

#GAR Precision 1680
+Rita 3X11 of Rita OFB4 EXT
#GT Maximum
#Beefland Zara K950

A blending of the proven genetics of PVF New Horizon 001 and Whitestone Precision H141.

The dam of this bull was bred in the Koupal herd where the third dam earned Pathfinder status.

BW	205-DAY	RATIO	365-DAY	RATIO
84	691	97	1189	95

Performance	
BW	+1.6
WW	+46
YW	+86
MILK	+13
Carcass	
CW	+9
MARB	+0.09
RE	+1.30
FAT	-1.006
%RP	+1.26
Ultrasonc	
%IMF	-1.20
RE	+1.36
FAT	+1.008
%RP	+1.43



SLEEP EASY MODEL OF IAR 609 - The dam of Lot 85.

83 LaGrand New Horizon 4448

Birth Date: 2-20-2004 Bull 14682082 Tattoo: 4448

#B/R New Design 323
PVF New Horizon 001
+13606093 Hyline Ellen 410

#B/R New Design 036
B/R Ruby of Tiffany 155
#Hyline Travel Agent
#Hyline Ellen 9062

#Krugerrand of Donamere 490
Bon View Blkdb Progress 798
13077338 Bon View Blkdb Progress 1054

#CH Stacker 7040
Donamere Bachel Beauty 288
#TC Dividend 963
Bon View Blkdb Progress 115

This bull earned individual weaning and yearling ratios

BW	205-DAY	RATIO	365-DAY	RATIO
102	839	117	1399	111

of 117 and 111 respectively from a dam with a progeny weaning ratio of 110 and a progeny yearling ratio of 105 on three natural calves carrying on a longtime established family from the Bon View Program.

This bull has three maternal sisters in production who weaned their first calves with an average ratio of 106.

Performance	
BW	+4.6
WW	+53
YW	+93
MILK	+20
Carcass	
CW	+8
MARB	+1.04
RE	+1.29
FAT	-1.020
%RP	+1.44
Ultrasonc	
%IMF	-1.25
RE	+1.16
FAT	-1.014
%RP	+1.13

84 LaGrand New Horizon 4532

Birth Date: 3-18-2004 Bull 14686250 Tattoo: 4532

#B/R New Design 323
PVF New Horizon 001
+13606093 Hyline Ellen 410

#B/R New Design 036
B/R Ruby of Tiffany 155
#Hyline Travel Agent
#Hyline Ellen 9062

#Famous 7001
Roth Blkdb Progress 2667
+14186300 Bon View Blkdb Progress 798

#SAF Fame
TK Karen 1369
#Krugerrand of Donamere 490
Bon View Blkdb Progress 1054

This high-performing son of PVF New Horizon 001 has

BW	205-DAY	RATIO	365-DAY	RATIO
93	790	109	1310	104

an individual weaning ratio of 109 produced as the first calf from a dam who is a maternal sister to Lot 83. The grandam of this bull has served in the embryo program at LaGrand Angus Ranch.

Performance	
BW	+4.1
WW	+49
YW	+88
MILK	+19
Carcass	
CW	+10
MARB	+1.12
RE	+1.32
FAT	-1.014
%RP	+1.40
Ultrasonc	
%IMF	-1.18
RE	+1.27
FAT	-1.010
%RP	+1.24

85 LaGrand 2617 4310

Birth Date: 1-27-2004 Bull +14682189 Tattoo: 4310

#B/R New Design 323
La Grand 2617
+14141828 +Bear MTN Forever Lady 601

#B/R New Design 036
B/R Ruby of Tiffany 155
#PAPA Equator 2928
#Blackcap Lady 384 GDAR

#+GAR Sleep Easy 1009
Sleep Easy Model of IAR 609
+12764620 #Premier Model 89

#Tehama Bando 155
Blacklass GAR 103
Premier Power Drive 7886B
BH Model 85

A member of the exciting first calf crop by the \$25,000 top-selling Lot 1 bull of the 2003 LaGrand bull sale to Belle Point Ranch.

The donor dam of this bull has a progeny weaning ratio of 110 on four natural calves and a progeny yearling ratio of 106 on three head coupled with a progeny IMF ratio of 104 on two head.

BW	205-DAY	RATIO	365-DAY	RATIO
82	680	ET	1168	ET

Performance	
BW	+2.4
WW	+31
YW	+62
MILK	+23
Ultrasonc	
%IMF	+1.23
RE	+1.24
FAT	-1.001
%RP	+1.08



LAGRAND 2617 - The sire of Lot 85.

LAGRAND NEW DESIGN BULLS



BAAR LAGRAND SURESHOT 1192 - The sire of Lots 86, 87 and 88.

86 LaGrand Sureshot 4424

Birth Date: 2-14-2004 Bull 14682047 Tattoo: 4424

#B/R New Design 323
BAAR LaGrand Sureshot 1192
+14084551 HR Wendy 618

#B/R New Design 036
B/R Ruby of Tiffany 155
#Bon View Bando 598
+HR Wendy 402

#+Krugerrand Merger 34 (FR)
North Fork Formera 48
+13821288 SVF Rachel 150D

#Krugerrand of Donamere 490
Ankony 5G00 Blackbird GC017
#N Bar Emulation EXT
+SVF Rachel 171B

BW	205-DAY	RATIO	365-DAY	RATIO
87	717	100	1346	107

Blending to the noted Rachel and Wendy families by the LaGrand herd sire, BAAR LaGrand Sureshot 1192.

The dam of this bull has progeny weaning and yearling ratios of 102 and 106 respectively on two calves.

Performance	
BW	+2.0
VW	+43
YW	+85
MILK	+25

Ultrasound	
%IMF	1.08
RE	1.37
FAT	1.003
%RP	1.15

87 LaGrand Sureshot 4428

Birth Date: 2-15-2004 Bull 14682053 Tattoo: 4428

#B/R New Design 323
BAAR LaGrand Sureshot 1192
+14084551 HR Wendy 618

#B/R New Design 036
B/R Ruby of Tiffany 155
#Bon View Bando 598
+HR Wendy 402

+GDAR SVF Traveler 228D
Toebben Matilda 125
13837653 Stone Gate Matilda 128

#Traveler 124 GDAR
+GDAR Forever Lady 718
#B/R New Design 323
Stone Gate Matilda 1244

BW	205-DAY	RATIO	365-DAY	RATIO
53	695	97	1329	106

This son of BAAR LaGrand Sureshot 1192 features a

tabulation stacked with proven carcass genetics and descends from a grandam who was a feature of past Toebben Triple T sale in Kentucky.

Performance	
BW	1.19
VW	1.41
YW	1.75
MILK	1.21

Ultrasound	
%IMF	1.05
RE	1.42
FAT	1.001
%RP	1.72

88 LaGrand Sureshot 4455

Birth Date: 2-21-2004 Bull 14682091 Tattoo: 4455

#B/R New Design 323
BAAR LaGrand Sureshot 1192
+14084551 HR Wendy 618

#B/R New Design 036
B/R Ruby of Tiffany 155
#Bon View Bando 598
+HR Wendy 402

#Basin Max 602C
Roth Pride Lady 078
13559613 #Stevenson Pride Lady 6368

#GT Maximum
#Basin Eline Erica 315U
#Basin Ambush 3905 (FR)
Stevenson Pride Lady 4066

BW	205-DAY	RATIO	365-DAY	RATIO
89	662	91	1273	100

A grandson of the LaGrand foundation Pathfinder Dam, Stevenson Pride Lady 6368 who was the \$42,000 second top-selling cow of the 2004 LaGrand Fall Sale.

A maternal sister weaned her first calf with a ratio of 104.

Performance	
BW	+7
VW	+35
YW	+76
MILK	+22

Ultrasound	
%IMF	1.14
RE	1.10
FAT	1.013
%RP	1.15



JR FOREVER 3996 - The dam of Lots 89 and 90.

89 LaGrand New Design 4820

Birth Date: 1-8-2004 Bull +14795383 Tattoo: 4820

BW	205-DAY	RATIO	365-DAY	RATIO
N/A	N/A	N/A	1179	ET

Ultrasound	
%IMF	1.16
RE	1.21
FAT	1.008
%RP	1.37

90 LaGrand New Design 4802

Birth Date: 1-12-2004 Bull +14795382 Tattoo: 4802

#B/R New Design 036
B/R New Design 323
#11928774 B/R Ruby of Tiffany 155

#VDAR New Trend 315
B/R Blackcap Empress 76
VDAR Pine Drive 251
Tiffany BR

Performance	
BW	1.17
VW	1.41
YW	1.72
MILK	1.17

#Rockn D Ambush 1531
JR Forever 3996
12871136 #+JR Forever 286D

#Paramont Ambush 2172
MS Blackcap Band of RD 1301
Jolly R Jim Dandy 009A
#+Jolly R Forever X003

Carcass	
CW	1.1
MARB	1.47
RE	1.45
FAT	1.039
%RP	1.94

Ultrasound	
%IMF	1.25
RE	1.09
FAT	1.006
%RP	1.43

These flush brothers offer a concentration of high marbling genetics sired by B/R New Design 323 descending from a Pathfinder third dam who is a flush sister to JR Juice 2005.

Flush sisters to these bulls were featured in the 2005 National Western Foundation Female Sale.

BW	205-DAY	RATIO	365-DAY	RATIO
86	682	ET	1092	ET

91 LaGrand New Design 4245

Birth Date: 1-20-2004 Bull 14682242 Tattoo: 4245

#VDAR New Trend 315
B/R New Design 036
#11418151 B/R Blackcap Empress 76

#AAR New Trend
#VDAR Lucy 704
#K&K Top Gun
+QLC A70 Blkcp Empress E43T

+North Fork Extra 6008
North Fork Barbara 8162
#13132529 Gibb Barbara 3317

#Transformer 100 EAR
N Bar Primrose 2424
#AAR New Trend
#GAF Barbara 8843

Performance	
BW	+3.2
VW	+37
YW	+78
MILK	+26

This son of the Pathfinder Sire, B/R New Design 036

was produced from a Pathfinder Dam who records a progeny weaning ratio of 106 on five calves and a progeny yearling ratio of 102 on four head. The grandam was a prolific embryo donor.

BW	205-DAY	RATIO	365-DAY	RATIO
92	673	94	1283	102

Ultrasound	
%IMF	1.15
RE	1.18
FAT	1.011
%RP	1.14



LAGRAND PRIDE LADY 3045 - Maternal sister to the dam of Lot 88.

LAGRAND NEW TREND INFLUENCE



LAGRAND NEUTRON 3165 - Lot 93

Lot 92

LaGrand Neutron 3154

Birth Date: 7-31-2003 Bull +14642762 Tattoo: 3154

BW	205-DAY	RATIO	365-DAY	RATIO
85	587	ET	1136	ET

Ultrasound	
%IMF	+1.12
RE	+1.78
FAT	-1.003
%RP	+1.64

Lot 93

LaGrand Neutron 3165

Birth Date: 8-6-2003 Bull +14642766 Tattoo: 3165

BW	205-DAY	RATIO	365-DAY	RATIO
87	699	ET	1253	ET

Performance	
BW	+3.6
WW	+5.3
YW	+9.8
MILK	+2.0

Carcass	
CW	+2.0
MARB	+1.6
RE	+3.5
FAT	-1.002
%RP	+1.15

Ultrasound	
%IMF	+1.12
RE	+1.78
FAT	-1.003
%RP	+1.64

#+SAF Neutron
SA Neutron 377
#12760345 #SA Queen Susan 102

#GAR Precision 1680
GAR Precision 2445
+12548703 GAR Pierre 2511

#VDAR New Trend 315
SAF Duchess 9029
#+SAF Power Fix
SA Queen Susan 910

#Tehama Bando 155
9J9 GAR 856
#GDAR Rito 596 LT
Finks 8132 of 68 Hoss

A pair of flush brothers produced in the embryo program at LaGrand Angus Ranch by the high-performance Pathfinder Sire, SA Neutron 377 from a donor dam by the elite carcass sire, GAR Precision 1680.

The dam of these bulls has progeny weaning and yearling ratios of 107 and 102 respectively on four natural calves coupled with a progeny IMF ratio of 102 and a progeny ultrasound ribeye ratio of 106 on 27 head.

Lot 94

LaGrand Neutron 4172

Birth Date: 1-13-2004 Bull +14694251 Tattoo: 4172

BW	205-DAY	RATIO	365-DAY	RATIO
92	610	ET	1151	ET

Performance	
BW	+3.3
WW	+5.0
YW	+9.2
MILK	+1.7

Carcass	
CW	+1.9
MARB	+1.11
RE	+2.7
FAT	+1.005
%RP	+1.0

Ultrasound	
%IMF	+1.01
RE	+1.52
FAT	+1.005
%RP	+1.48

#+SAF Neutron
SA Neutron 377
#12760345 #SA Queen Susan 102

#N Bar Emulation EXT
Sir Wms Lucy 40X8
13008618 #Basin Lucy 340X

#VDAR New Trend 315
SAF Duchess 9029
#+SAF Power Fix
SA Queen Susan 910

#Emulation N Bar 5522
N Bar Primrose 2424
#Rambo 465T of JRS
Basin Lucy 303

This son of the high-performance sire, SA Neutron 377 was produced in the embryo program at LaGrand Angus Ranch from a donor dam who records a progeny weaning ratio of 105 on three natural calves and a progeny yearling ratio of 109 on one head.

A maternal sister weaned her first two calves with an average ratio of 112.



LAGRAND NEW TREND 4846 - Lot 95

Lot 95

LaGrand New Trend 4846

Birth Date: 2-28-2004 Bull +14882966 Tattoo: 4846

#VDAR Shoshone 548 #Schearbrook Shoshone

AAR New Trend #9958634 Donna AAR 74

VDAR Polly 308
#Candolier Forever 376
Donna 244 GDAR

Basin Sensation 259D
CW Rosella Eileenmere 623
12659344 Rosella Eileenmere 421

Gardens Sensation 039 S1 (R)
Basin Heather Bloom 9712
#N Bar Emulation EXT
CW Rosella Eileenmere 214

Performance	
BW	+3.7
WW	+3.7
YW	+6.7
MILK	+2.2

Carcass	
CW	+1.6
MARB	+1.08
RE	+2.3
FAT	+1.010
%RP	+1.08

Ultrasound	
%IMF	+1.05
RE	+1.69
FAT	-1.008
%RP	+1.74

This son of the longtime high maternal Pathfinder Sire AAR New Trend was produced from a donor dam who has a progeny IMF ratio of 101 and a progeny ultrasound ribeye ratio of 104 on 21 head.

BW	205-DAY	RATIO	365-DAY	RATIO
98	732	ET	1128	ET



Laura Pankratz, taming the big cats!



SA NEUTRON 377 - REFERENCE SIRE F

Lot F

SA Neutron 377

Birth Date: 1-12-1997 Bull #12760345 Tattoo: 377

#VDAR New Trend 315
SAF Neutron #11747039 SAF Duchess 9029

#AAR New Trend
#VDAR Lucy 704
#Traveler 1148 GDAR
#Fairdales Duchess 247

#+SAF Power Fix
SA Queen Susan 102
#11700210 SA Queen Susan 910

#+Brost Power Drive
Pride Queen T 4155
#+Oneills Renovator
Queen Susan 90

Performance	
BW	+4.3
WW	+6.3
YW	+11.8
MILK	+1.6

Carcass	
CW	+2.6
MARB	+1.3
RE	+3.7
FAT	+0.002
%RP	+0.6

Ultrasound	
%IMF	-0.6
RE	+7.1
FAT	+0.020
%RP	+3.2

FOR REFERENCE ONLY.

Featuring sons of this Genex/CRI high-performance Pathfinder Sire who ranks in the top one percent among current sires for Weaning Weight EPD, Yearling Weight EPD and Ultrasound Ribeye Area EPD.

This proven sire adds additional length and performance to his progeny and he was produced from a Pathfinder Dam who served as a foundation donor in the Gallagher program.

LAGRAND PRECISION H141 SONS

HEATHCOTE BEAUTY 1609

- The dam of Lots 96 through 101X.



HYLINE PRIDE LUCY 611

- The dam of Lots 102 through 109.

96 LaGrand H141 Precision 3004
Birth Date: 8-1-2003 Bull +14725303 Tattoo: 3004

BW	205-DAY	RATIO	365-DAY	RATIO
91	736	ET	1232	ET

97 LaGrand H141 Precision 3007
Birth Date: 8-5-2003 Bull +14725305 Tattoo: 3007

BW	205-DAY	RATIO	365-DAY	RATIO
85	727	ET	1217	ET

98 LaGrand H141 Precision 3009
Birth Date: 8-6-2003 Bull +14725306 Tattoo: 3009

BW	205-DAY	RATIO	365-DAY	RATIO
97	666	ET	1276	ET

99 LaGrand H141 Precision 3019
Birth Date: 8-10-2003 Bull +14658287 Tattoo: 3019

BW	205-DAY	RATIO	365-DAY	RATIO
92	825	ET	1345	ET

Ultrasound	
%IMF	+1.0
RE	+1.69
FAT	+1.006
%RP	+1.55

100 LaGrand H141 Precision 4003
Birth Date: 1-1-2004 Bull +14687357 Tattoo: 4003

BW	205-DAY	RATIO	365-DAY	RATIO
92	666	ET	1197	ET

Ultrasound	
%IMF	+1.04
RE	+1.76
FAT	+1.016
%RP	+1.64

101 LaGrand H141 Precision H403
Birth Date: 1-1-2004 Bull +14743551 Tattoo: H403

BW	205-DAY	RATIO	365-DAY	RATIO
92	682	ET	1199	ET

Ultrasound	
%IMF	+1.01
RE	+1.60
FAT	+1.0
%RP	+1.54

101X LaGrand H141 Precision 4066
Birth Date: 1-9-2004 Bull +14687367 Tattoo: 4066

#GAR Precision 1680
Whitestone Precision H141
12527924 +Rita 3X11 of Rita 0FB4 EXT

#Tehama Bando 155
9J9 GAR 856
#N Bar Emulation EXT
+Rita 0FB4 of 5H11 Fullback

Performance	
BW	+7
WW	+31
YW	+104
MILK	+23

Carcass	
CW	+5
MARB	+14
RE	+18
FAT	-0.004
%RP	+1.17

#+VDAR Vision 243
Heathcote Beauty 1609
+13320859 +VDAR Beauty 5042

#VDAR Rito 953
VDAR Polly 215
#Traveler 124 GDAR
VDAR Beauty 228

BW	205-DAY	RATIO	365-DAY	RATIO
N/A	616	ET	1131	ET

Ultrasound	
%IMF	+1.0
RE	+1.64
FAT	-1.001
%RP	+1.79

This powerful group of flush brothers ranks in the top two percent among non-parent bulls for Ultrasound Ribeye Area EPD and in the top five percent for Ultrasound Retail Product EPD. Sired by the now-deceased carcass leader Whitestone Precision H141 who has the highest Ultrasound Ribeye Area EPD and the third highest Ultrasound Percent Retail Product EPD among proven sires. The awesome donor dam of these bulls was a feature of a past LaGrand sale and the grandam is the \$120,000 VDAR Beauty 5042.

102 LaGrand H141 Precision H4361
Birth Date: 1-2-2004 Bull +14743573 Tattoo: H4361

BW	205-DAY	RATIO	365-DAY	RATIO
85	707	ET	1198	ET

Ultrasound	
%IMF	+1.04
RE	+1.54
FAT	+1.012
%RP	+1.65

103 LaGrand H141 Precision H427
Birth Date: 1-5-2004 Bull +14743561 Tattoo: H427

BW	205-DAY	RATIO	365-DAY	RATIO
87	755	ET	1251	ET

Ultrasound	
%IMF	+1.12
RE	+1.57
FAT	+1.002
%RP	+1.55

104 LaGrand H141 Precision H428
Birth Date: 1-6-2004 Bull +14743562 Tattoo: H428

BW	205-DAY	RATIO	365-DAY	RATIO
98	768	ET	1134	ET

Ultrasound	
%IMF	+1.04
RE	+1.58
FAT	+1.008
%RP	+1.52

105 LaGrand H141 Precision H429
Birth Date: 1-6-2004 Bull +14743563 Tattoo: H429

BW	205-DAY	RATIO	365-DAY	RATIO
95	630	ET	1131	ET

Ultrasound	
%IMF	+1.11
RE	+1.52
FAT	+1.008
%RP	+1.74

106 LaGrand H141 Precision H433
Birth Date: 1-6-2004 Bull +14743565 Tattoo: H433

BW	205-DAY	RATIO	365-DAY	RATIO
72	699	ET	1265	ET

Ultrasound	
%IMF	+1.11
RE	+1.48
FAT	+1.009
%RP	+1.45

107 LaGrand H141 Precision H438
Birth Date: 1-7-2004 Bull +14743567 Tattoo: H438

BW	205-DAY	RATIO	365-DAY	RATIO
98	732	ET	1311	ET

Ultrasound	
%IMF	+1.13
RE	+1.66
FAT	+1.004
%RP	+1.53

108 LaGrand H141 Precision H443
Birth Date: 1-7-2004 Bull +14743569 Tattoo: H443

BW	205-DAY	RATIO	365-DAY	RATIO
89	711	ET	1186	ET

Ultrasound	
%IMF	+1.05
RE	+1.39
FAT	+1.019
%RP	+1.29

109 LaGrand H141 Precision 4919
Birth Date: 1-20-2004 Bull +14741743 Tattoo: 4919

#GAR Precision 1680
Whitestone Precision H141
12527924 +Rita 3X11 of Rita 0FB4 EXT

#Tehama Bando 155
9J9 GAR 856
#N Bar Emulation EXT
+Rita 0FB4 of 5H11 Fullback

Performance	
BW	+1.0
WW	+39
YW	+75
MILK	+22

#Hyline New Trend 382
Hyline Pride Lucy 611
12633333 Hyline Lucy 442

#VDAR New Trend 315
Lucy of Hyline 8024
#Hyline Travel Agent
Hyline Lucy 549

BW	205-DAY	RATIO	365-DAY	RATIO
89	729	ET	1163	ET

Ultrasound	
%IMF	+1.17
RE	+1.50
FAT	+1.008
%RP	+1.45

This impressive flush of full brothers are sired by the rare and valuable Whitestone Precision H141 who has the highest Ultrasound Ribeye Area EPD and the third highest Ultrasound Percent Retail Product EPD in the spring 2005 National Sire Evaluation Main Report. The donor dam of these bulls sells as a progeny birth ratio of 99 with a progeny weaning ratio of 114 on three natural calves and a progeny yearling ratio of 110 on two head. From one of the most powerful and productive families developed at Hyline Angus Ranch in Montana.

G Whitestone Precision H141
Birth Date: 2-24-1996 Bull 12527924 Tattoo: H141

#Tehama Bando 155
GAR Precision 1680
#11520398 9J9 GAR 856

#Band 234 of Ideal 3163
Tehama Blackcap G373
#Rito 9J9 of B156 7T26
Blackbird GAR 833

Performance	
BW	+7
WW	+53
YW	+104
MILK	+23

Carcass	
CW	+12
MARB	+21
RE	+27
FAT	-0.01
%RP	+1.17

#N Bar Emulation EXT
Rita 3X11 of Rita 0FB4 EXT
+11909798 +Rita 0FB4 of 5H11 Fullback

#Emulation N Bar 5522
N Bar Primrose 2424
#Leachman Fullback
Rita 5H11 of 1B14 Rito 9J9

Ultrasound	
%IMF	-0.2
RE	+1.13
FAT	+0.04
%RP	+1.10

FOR REFERENCE ONLY.

Featuring sons of this rare and valuable now-deceased sire who has the highest Ultrasound Ribeye Area EPD and the third highest Ultrasound Percent Retail Product EPD among proven sires in the Spring 2005 National Sire Evaluation Main Report. This graduate of a past Whitestone Pasture Performance-Tested Bull sale is by the elite carcass sire, GAR Precision 1680 from the herd sire producing Rita family. **29**



WHITESTONE PRECISION H141 - Reference Sire G.

LAGRAND PRECISION H141 SONS



LAGRAND H141 PRECISION H434 - Lot 113.

Lot 110 LaGrand H141 Precision H408
 Birth Date: 1-2-2004 Bull +14743553 Tattoo: H408

BW	205-DAY	RATIO	365-DAY	RATIO
102	717	ET	1304	ET

Ultrasound			
%IMF	RE	FAT	%RP
-1.04	+1.60	-1.004	+1.40

Lot 111 LaGrand H141 Precision H410
 Birth Date: 1-3-2004 Bull +14743555 Tattoo: H410

BW	205-DAY	RATIO	365-DAY	RATIO
80	727	ET	1281	ET

Ultrasound			
%IMF	RE	FAT	%RP
+1.01	+1.60	+1.001	+1.51

Lot 112 LaGrand H141 Precision H432
 Birth Date: 1-6-2004 Bull +14743564 Tattoo: H432

BW	205-DAY	RATIO	365-DAY	RATIO
90	763	ET	1350	ET

Ultrasound			
%IMF	RE	FAT	%RP
+1.08	+1.63	+1.017	+1.14

Lot 113 LaGrand H141 Precision H434
 Birth Date: 1-6-2004 Bull +14743566 Tattoo: H434

#GAR Precision 1680
 Whitestone Precision H141
 12527924 +Rita 3X11 of Rita OFB4 EXT

#Tehama Bando 155
 9J9 GAR 856
 #N Bar Emulation EXT
 +Rita OFB4 of 5H11 Fullback

#VDAR New Trend 315
 Jolly R Forever 117E
 +12327588 +Jolly R Forever 2008

#AAR New Trend
 #VDAR Lucy 704
 #Candolier Forever 376
 MG S Black Diamond

This impressive flush of full brothers are sired by the rare and valuable Whitestone Precision H141 who has the highest Ultrasound Ribeye Area EPD and the third highest Ultrasound Percent Retail Product EPD among proven sires, earning these bulls an Ultrasound Ribeye EPD which ranks in the top two percent among non-parent bulls and an ultrasound Ribeye Area EPD which ranks in the top five percent.

The donor dam of these bulls has an impressive progeny weaning ratio of 117 and a progeny yearling ratio of 109 on five natural calves. The grandam of these bulls has the distinction of being a flush sister to the high marbling and high maternal Pathfinder Sire, JR Juice 2005.

BW	205-DAY	RATIO	365-DAY	RATIO
100	729	ET	1308	ET

Performance			
BW	WW	YW	MILK
+1.25	+1.44	+1.79	+1.29

Carcase			
CW	MARB	RE	FAT
+1.7	+1.23	+1.10	+1.011

Ultrasound			
%IMF	RE	FAT	%RP
+1.01	+1.78	+1.015	+1.56



LAGRAND FOREVER 4861 - Maternal sister to Lots 110-113 who sold for \$6,000 to Chip Carroll, Owasso, Oklahoma.

Lot 114 LaGrand H141 Precision 4069
 Birth Date: 1-1-2004 Bull 14687368 Tattoo: 4069

#GAR Precision 1680
 Whitestone Precision H141
 12527924 +Rita 3X11 of Rita OFB4 EXT

#Tehama Bando 155
 9J9 GAR 856
 #N Bar Emulation EXT
 +Rita OFB4 of 5H11 Fullback

#B/R New Design 036
 Roth Polly 2101
 14134894 +Roth Polly 9509

#VDAR New Trend 315
 B/R Blackcap Empress 76
 #VDAR Bando 701
 +VDAR Polly 4013

Ranking in the top two percent among non-parent

BW	205-DAY	RATIO	365-DAY	RATIO
86	717	100	1351	107

bulls for Ultrasound Ribeye Area EPD and in the top three percent for Ultrasound Percent Retail Product EPD with a Yearling Weight EPD in the top four percent, this unique individual is sired by the rare and valuable Whitestone Precision H141 from a dam by the carcass trait Pathfinder Sire, B/R New Design 036. This bull is from the noted Polly family.

Performance	
BW	WW
+2.9	+4.3

Carcase	
CW	MARB
+1.9	+1.26

Ultrasound	
%IMF	RE
+1.11	+1.93

Lot 115 LaGrand H141 Precision 4020
 Birth Date: 1-4-2004 Bull 14687359 Tattoo: 4020

#GAR Precision 1680
 Whitestone Precision H141
 12527924 +Rita 3X11 of Rita OFB4 EXT

#Tehama Bando 155
 9J9 GAR 856
 #N Bar Emulation EXT
 +Rita OFB4 of 5H11 Fullback

#SAF 598 Bando 5175
 LaGrand Blackclass 2824
 +14240162 +GAR Ambush 1175

#Bon View Bando 598
 #SAF Royal Lass 1002
 #Paramont Ambush 2172
 +GAR Bando 09

This balanced EPD herd sire prospect combines a breed

BW	205-DAY	RATIO	365-DAY	RATIO
86	751	105	1389	110

average Birth Weight EPD with both a Yearling Weight EPD and an Ultrasound Ribeye Area EPD in the top two percent among non-parent bulls along with an Ultrasound Percent Retail Product EPD that ranks in the top five percent. This bull earned an individual weaning ratio of 105 and an individual yearling ratio of 110 as the first calf from a dam whose flush brothers highlighted the 2003 LaGrand Bull Sale from the same Blackclass family that produced GAR Sleep Easy 1009.

Performance	
BW	WW
+2.4	+4.9

Carcase	
CW	MARB
+1.7	+1.23

Ultrasound	
%IMF	RE
+1.01	+1.76

Lot 116 LaGrand H141 Precision 4115
 Birth Date: 1-5-2004 Bull +14743525 Tattoo: 4115

#GAR Precision 1680
 Whitestone Precision H141
 12527924 +Rita 3X11 of Rita OFB4 EXT

#Tehama Bando 155
 9J9 GAR 856
 #N Bar Emulation EXT
 +Rita OFB4 of 5H11 Fullback

#N Bar Emulation EXT
 Diablo Echo 157
 +13274166 Diablo Echo 774

#Emulation N Bar 5522
 N Bar Primrose 2424
 Sky High King 620
 Tehama of DP B77

A balanced EPD herd sire prospect by the rare and

BW	205-DAY	RATIO	365-DAY	RATIO
110	662	ET	1212	ET

valuable Whitestone Precision H141 combining a very moderate Birth Weight EPD in the lowest fifteen percent among non-parent bulls with an Ultrasound Ribeye Area EPD in the top two percent and an Ultrasound Retail Product EPD in the top five percent.

The donor dam of this bull has a progeny IMF ratio of 131 on one head.

Performance	
BW	WW
+1.5	+4.2

Carcase	
CW	MARB
+1.11	+1.13

Ultrasound	
%IMF	RE
+1.05	+1.56

Lot 117 LaGrand H141 Precision 4032
 Birth Date: 1-6-2004 Bull 14687362 Tattoo: 4032

#GAR Precision 1680
 Whitestone Precision H141
 12527924 +Rita 3X11 of Rita OFB4 EXT

#Tehama Bando 155
 9J9 GAR 856
 #N Bar Emulation EXT
 +Rita OFB4 of 5H11 Fullback

#Bon View New Design 1407
 Lagrand Blackbird 2090
 14304282 +North Fork Blackbird 9046

#B/R New Design 036
 Bon View Pride 664
 #Sitz Traveler 9929
 +North Fork Blackbird 7120

Offering one of the most unique and valuable EPD

BW	205-DAY	RATIO	365-DAY	RATIO
52	765	107	1370	109

spreads of the entire LaGrand calf crop, this bull ranks in the lowest one percent among non-parent bulls for Birth Weight EPD with a Yearling Weight EPD in the top three percent and an Ultrasound Ribeye Area EPD in the top one percent along with an Ultrasound Percent Retail Product EPD in the top three percent.

This bull combines an individual birth ratio of 67 with individual weaning and yearling ratios of 107 and 109 respectively by the rare and valuable Whitestone Precision H141, produced as the first calf from a dam by Bon View New Design 1407.

Performance	
BW	WW
-2.1	+4.7

Carcase	
CW	MARB
+1.5	+1.28

Ultrasound	
%IMF	RE
+1.26	+1.74

LAGRAND PRECISION H141 SONS



LAGRAND H141 PRECISION 3141 - Lot 118



LAGRAND H141 PRECISION 3142 - Lot 119

118 LaGrand H141 Precision 3141
 Birth Date: 12-17-2003 Bull +14641810 Tattoo: 3141

BW	205-DAY	RATIO	365-DAY	RATIO
100	634	ET	1223	ET

Ultrasound	
%IMF	-1.01
RE	+1.44
FAT	-1.008
%RP	+1.45

119 LaGrand H141 Precision 3142
 Birth Date: 12-19-2003 Bull +14641811 Tattoo: 3142

BW	205-DAY	RATIO	365-DAY	RATIO
85	690	ET	1255	ET

Ultrasound	
%IMF	-1.02
RE	+1.21
FAT	+1.009
%RP	-1.10

120 LaGrand H141 Precision 3144
 Birth Date: 12-20-2003 Bull +14641812 Tattoo: 3144

BW	205-DAY	RATIO	365-DAY	RATIO
106	754	ET	1332	ET

Ultrasound	
%IMF	+1.02
RE	+1.41
FAT	+1.003
%RP	+1.07

121 LaGrand H141 Precision 4007
 Birth Date: 1-2-2004 Bull +14682048 Tattoo: 4007

BW	205-DAY	RATIO	365-DAY	RATIO
N/A	762	ET	1319	ET

Ultrasound	
%IMF	-1.06
RE	+1.39
FAT	+1.0
%RP	+1.14

122 LaGrand H141 Precision 4008
 Birth Date: 1-3-2004 Bull +14682051 Tattoo: 4008

BW	205-DAY	RATIO	365-DAY	RATIO
99	704	ET	1211	ET

Ultrasound	
%IMF	+1.11
RE	+1.36
FAT	+1.001
%RP	+1.32

123 LaGrand H141 Precision 4022
 Birth Date: 1-4-2004 Bull +14687360 Tattoo: 4022

#GAR Precision 1680
 Whitestone Precision H141
 12527924 +Rita 3X11 of Rita OFB4 EXT

#Tehama Bando 155
 9J9 GAR 856
 #N Bar Emulation EXT
 +Rita OFB4 of 5H11 Fullback

+GDAR SVF Russ 184B
 Broken Arrow Wendy 038
 +13608172 HR Wendy 618

#GDAR Executive 727
 +GDAR Forever Lady 719
 #Bon View Bando 598
 +HR Wendy 402

BW	205-DAY	RATIO	365-DAY	RATIO
97	707	ET	1235	ET

Performance	
BW	+2.8
WW	+1.49
MILK	+1.94
YW	+1.18

Carcass	
CW	+1.12
MARB	+1.07
RE	+1.21
FAT	-1.005
%RP	+1.15

Ultrasound	
%IMF	+1.01
RE	+1.48
FAT	+1.006
%RP	+1.41

A group of high-performance flushmates by the rare and valuable Whitestone Precision H141 from the high-performance Wendy family. These bulls rank in the top three percent among non-parent bulls for Yearling Weight EPD from a donor dam who records a progeny IMF ratio of 114 on one head.

124 LaGrand H141 Precision 4001
 Birth Date: 1-1-2004 Bull 14682036 Tattoo: 4001

#GAR Precision 1680
 Whitestone Precision H141
 12527924 +Rita 3X11 of Rita OFB4 EXT

#Tehama Bando 155
 9J9 GAR 856
 #N Bar Emulation EXT
 +Rita OFB4 of 5H11 Fullback

#+SVF GDAR 216 LTD
 Roth Wendy 1998
 +14137148 +Double Bar Wendy 508-0100

#Traveler 124 GDAR
 +GDAR Forever Lady 718
 #CH 054 Rito 0100
 KMR Wendy 508

BW	205-DAY	RATIO	365-DAY	RATIO
79	735	103	1253	100

This son of the rare and valuable Whitestone Precision H141 from the Wendy family combines a below breed average Birth Weight EPD with a Weaning Weight EPD and a Yearling Weight EPD in the top three percent among non-parent bulls along with an Ultrasound Ribeye Area EPD in the top five percent and an Ultrasound Percent Retail Product EPD in the top ten percent. This bull balances an individual birth ratio of 97 with an individual weaning ratio of 103.

Performance	
BW	+1.9
WW	+52
YW	+1.94
MILK	+24

Carcass	
CW	+1.15
MARB	+1.18
RE	+1.27
FAT	+1.000
%RP	+1.11

Ultrasound	
%IMF	+1.0
RE	+1.39
FAT	+1.009
%RP	+1.53

125 LaGrand H141 Precision 4042
 Birth Date: 1-7-2004 Bull 14746387 Tattoo: 4042

#GAR Precision 1680
 Whitestone Precision H141
 12527924 +Rita 3X11 of Rita OFB4 EXT

#Tehama Bando 155
 9J9 GAR 856
 #N Bar Emulation EXT
 +Rita OFB4 of 5H11 Fullback

#Bon View Bando 598
 Roth Wendy 1993
 +14146966 +Double Bar Wendy 508-0100

#Tehama Bando 155
 #Bon View Dora 56
 #CH 054 Rito 0100
 KMR Wendy 508

BW	205-DAY	RATIO	365-DAY	RATIO
82	767	107	1321	105

This intriguing prospect earned individual weaning and yearling ratios of 107 and 105 respectively sired by the rare and valuable Whitestone Precision H141 to rank in the top three percent among non-parent bulls for Yearling Weight EPD and in the top four percent for Weaning Weight EPD. This bull was produced as the first calf from a dam who is a product of the embryo program at LaGrand Angus Ranch.

Performance	
BW	+1.6
WW	+51
YW	+1.95
MILK	+28

Carcass	
CW	+1.13
MARB	+1.13
RE	+1.17
FAT	-1.005
%RP	+1.08

Ultrasound	
%IMF	-1.02
RE	+1.61
FAT	-1.001
%RP	+1.48



LAGRAND H141 PRECISION 4008 - Lot 122



LAGRAND H141 PRECISION 4022 - Lot 123

H141 SONS

Lot 126 LaGrand H141 Precision 4039

Birth Date: 1-7-2004 Bull 14687364 Tattoo: 4039

#GAR Precision 1680 #Tehama Bando 155
Whitestone Precision H141 9J9 GAR 856
12527924 +Rita 3X11 of Rita 0FB4 EXT #N Bar Emulation EXT
+Rita 0FB4 of 5H11 Fullback

#B/R New Design 323 #B/R New Design 036
LaGrand Blackclass 241 B/R Ruby of Tiffany 155
+14252839 Broken Arrow Roth MS RUSS808 +GDAR SVF Russ 184B
Brokenarrow Blackclass3904-18

A balanced EPD herd sire prospect ranking in the top two percent among non-parent bulls for Yearling Weight EPD coupled with below breed average Birth Weight EPD. This bull has a moderate individual birth ratio of 96 combined with individual weaning and yearling ratios of 110 and 112 respectively produced as the first calf of a dam by the longtime high marbling leader, B/R New Design 323.

BW	205-DAY	RATIO	365-DAY	RATIO
78	787	110	1408	112

Performance	
BW	+14
VW	+50
YW	+97
MILK	+24

Carcass	
CW	+6
MARB	+26
RE	+33
FAT	+0.11
%RP	+41

Ultrasound	
%IMF	+0.07
RE	+49
FAT	+0.01
%RP	+49

Lot 127 LaGrand H141 Precision 4040

Birth Date: 1-7-2004 Bull 14687365 Tattoo: 4040

#GAR Precision 1680 #Tehama Bando 155
Whitestone Precision H141 9J9 GAR 856
12527924 +Rita 3X11 of Rita 0FB4 EXT #N Bar Emulation EXT
+Rita 0FB4 of 5H11 Fullback

#B/R New Design 323 #B/R New Design 036
LaGrand Pearlstone 2502 B/R Ruby of Tiffany 155
+14252843 Broken Arrow Roth MS RUSS805 +GDAR SVF Russ 184B
Broken Arrow MS Traveler3262

This seven-eighths brother to Lot 126 is sired by the rare and valuable Whitestone Precision H141 from a dam backed by B/R New Design 323 and GDAR SVF Russ 184B. This bull balances an individual birth ratio of 88 with individual weaning and yearling ratios of 115 and 111 respectively to rank in the lowest ten percent among non-parent bulls for Birth Weight EPD coupled with both a Yearling Weight EPD and an Ultrasound Ribeye Area EPD in the top two percent and an Ultrasound Percent Retail Product EPD in the top three percent.

BW	205-DAY	RATIO	365-DAY	RATIO
71	825	115	1395	111

Performance	
BW	+2
VW	+52
YW	+97
MILK	+23

Carcass	
CW	+6
MARB	+26
RE	+33
FAT	+0.11
%RP	+41

Ultrasound	
%IMF	+0.07
RE	+90
FAT	+0.015
%RP	+60

Lot 128 DH LaGrand Precision 363P

Birth Date: 1-9-2004 Bull 14766194 Tattoo: 363P

#GAR Precision 1680 #Tehama Bando 155
Whitestone Precision H141 9J9 GAR 856
12527924 +Rita 3X11 of Rita 0FB4 EXT #N Bar Emulation EXT
+Rita 0FB4 of 5H11 Fullback

#JLB Exacto 416 #GAR Precision 1680
Roth Barbara 0433 +Brost Burgess 041
+13657708 Gibb Barbara 3317 #AAR New Trend
#GAF Barbara 8843

A linebred descendant of GAR Precision 1680 ranking in the top one percent among non-parent bulls for Ultrasound Ribeye Area EPD and Ultrasound Percent Retail Product EPD. This son of the rare and valuable Whitestone Precision H141 was produced from a dam who was a product of the embryo program at LaGrand Angus Ranch.

BW	205-DAY	RATIO	365-DAY	RATIO
95	782	95	1273	99

Performance	
BW	+2.2
VW	+39
YW	+84
MILK	+23

Carcass	
CW	+14
MARB	+15
RE	+37
FAT	+0.000
%RP	+24

Ultrasound	
%IMF	+0.07
RE	+70
FAT	+0.016
%RP	+87

Lot 129 LaGrand H141 Precision 4234

Birth Date: 1-19-2004 Bull 14687372 Tattoo: 4234

#GAR Precision 1680 #Tehama Bando 155
Whitestone Precision H141 9J9 GAR 856
12527924 +Rita 3X11 of Rita 0FB4 EXT #N Bar Emulation EXT
+Rita 0FB4 of 5H11 Fullback

#PS Power Play (GDF) #Early Sunset Emulous 60E
Twin Oaks PP Blackcap 8062 PS Menteith Blanche 205
11751469 Twin Oaks Blackcap 5828 #+PS High Pockets
Twin Oaks Princess Janet

Another son of the now-deceased Whitestone Precision H141 who has the highest Ultrasound Ribeye Area EPD and third highest Ultrasound Percent Retail Product EPD. This bull has three maternal sisters who post a collective progeny weaning ratio of 105.

BW	205-DAY	RATIO	365-DAY	RATIO
98	618	91	1092	98

Performance	
BW	+2.2
VW	+33
YW	+70
MILK	+14

Carcass	
CW	+7
MARB	+11
RE	+12
FAT	+0.012
%RP	+08

Ultrasound	
%IMF	+0
RE	+28
FAT	+0.001
%RP	+37

REFERENCE SIRES



CA FUTURE DIRECTION 5321 - Reference Sire H

Lot H CA Future Direction 5321

Birth Date: 2-16-1995 Bull 12493607 Tattoo: 5321

#Tehama Bando 155 #Band 234 of Ideal 3163
GAR Precision 1680 Tehama Blackcap G373
#11520398 9J9 GAR 856 #Rito 9J9 of B156 7T26
Blackbird GAR 833

#+SAF Power Fix #+Brost Power Drive
CA Miss Power Fix 308 Pride Queen T 4155
12054694 CA Lady Eight 1015 #Rito 8E8 of 5H11 Traveler
CA Actress 9015

FOR REFERENCE ONLY.

Featuring sons of this Genex/CRI ultrasound leader who has no equal among proven sires for combining IMF EPD, Ultrasound Ribeye EPD and Ultrasound Percent Retail Product EPD. This unique sire also excels in calving-ease genetics and he is sired by GAR Precision 1680 from a dam who was the \$80,000 top-selling female of the first Genex/CRI Influence Sale.

Performance	
BW	+6
VW	+36
YW	+72
MILK	+28

Carcass	
CW	+26
MARB	+34
RE	+62
FAT	+0.009
%RP	+31

Ultrasound	
%IMF	+70
RE	+87
FAT	+0.013
%RP	+90

Lot T Twin Valley Precision E161 (FR)

Birth Date: 5-16-1995 Bull #12346200 Tattoo: E161

#Tehama Bando 155 #Band 234 of Ideal 3163
GAR Precision 1680 Tehama Blackcap G373
#11520398 9J9 GAR 856 #Rito 9J9 of B156 7T26
Blackbird GAR 833

#SS Traveler 6T6 #QAS Traveler 23-4
WCC Blackcap C9 (R) #SS Miss Power Play 4A4
+11911768 Premier Blackcap 6276A (R) +Brusco
Premier Lady Blackcap 2861U

FOR REFERENCE ONLY.

Featuring sons of this now-deceased Genex/CRI Pathfinder Sire who combines elite performance and carcass genetics in one package. This very popular sire is responsible for a long list of top-selling individuals and numerous champions throughout the breed.

Performance	
BW	+3.0
VW	+41
YW	+91
MILK	+22

Carcass	
CW	+24
MARB	+11
RE	+57
FAT	-0.007
%RP	+44

Ultrasound	
%IMF	+31
RE	+69
FAT	-0.001
%RP	+65



TWIN VALLEY PRECISION E161 - Reference Sire I