

**LaGrand Wideload
30P--Lot 361**



361 LaGrand Wideload 30P Bull

P42538186 CALVED: MAR 3, 2004 TATTOO: 30P
 AA BOOMER 611 REMITALL BOOMER 46B
 AA PRF WIDELOAD EF IDEALIST PENNY 812
 P42325186 PRF MS SCARLETT 919 NJW 1Y WRANGLER 19D
 AA IMPERIAL LADY 2119

WLB WILLIS 25C 114F NJW Z17 VAQUERO 25C
 BIGLIENI HANNAH 15K SHELL-RIVER NICKIE 13C
 P42124914 BIGLIENI BETH 30X SBR BUTLER 58F 215R
 KLONDIKE DONNA 400L

EPD'S: BW 4.6 WW 40 YW 64 M 15 M&G 35
FAT -0.001 REA 0.16 IMF -0.05
 • BW 99 ADJ 205 DAY WT 662 ADJ 365 DAY WT 1231
 • A son of the many times champion, Wideload out of a Bill and Nancy Biglieni bred cow. The Willis bull left many outstanding daughters.



363 LaGrand Kodiak 6153--Lot 363 Bull

P42531267 CALVED: JUN 15, 2003 TATTOO: 6153
 VCR EAST KODIAK 506E WTK 55Y BOND 75A
 S&S KODIAK 49J VCR MIS FLO JO 849X
 P41151138 S&S LADY LAMP 467B (DOD) DL DIGGER 15G 44U
 S&S LADY LAMP 188X

KGT 654 PAYLOAD 277S ENFORCER 107H
 VICTORIA 4G RHF VICTRA 424 654
 P24049796 VICTORIA WINTUN MESSENGER 26W
 OR L TRANSVIC 54915K

EPD'S: BW 3.1 WW 38 YW 61 M 13 M&G 33
FAT 0.008 REA 0.13 IMF -0.02
 • BW 90 ADJ. WW 548 YW 1155
 • A son of 49J out of the great donor, 4G from California. 49J is a full brother to Cattleman who has been used throughout the Hereford industry with great success.

362 HHR LaGrand Wideload 386P Bull

P42514215 CALVED: MAR 17, 2004 TATTOO: 386P
 AA BOOMER 611 REMITALL BOOMER 46B
 AA PRF WIDELOAD EF IDEALIST PENNY 812
 P42325186 PRF MS SCARLETT 919 NJW 1Y WRANGLER 19D
 AA IMPERIAL LADY 2119

HH ADVANCE 6052F CL 1 DOMINO 392
 HHR ADELIN 304L HH MISS ADVANCE 160A (DOD)
 42197181 HHR IMPRESSION 266J C GOLD RUSH 1ET
 HHR HIGHLITE 12A

EPD'S: BW 4.0 WW 47 YW 80 M 14 M&G 37
FAT 0.002 REA 0.20 IMF 0.04
 • BW 90 ADJ. WW 580 WT 1-5-05 1035 LBS.
 • A Wideload son with above average EPDs for Weaning and Yearling. Note the spread from birth to yearling.

364 LaGrand Call 81P ET Bull

P42538241 CALVED: MAR 6, 2004 TATTOO: 81P
 H 83 EMBRACER 8006 REMITALL EMBRACER 8E
 BRL CALL 100L H MISS APPROVAL 9082
 P42196682 BRL DELUXIE 100A VLSF DELUXE ET 220W
 BRL BELLE 1455 10X

JSF 37 271 DEVO 23C RLOA R271 DYNASTY ET 57U
 FMC FERGS PRIDE JSF 183 VICTORIA 7A
 P24031183 FMC MORE PZAZZ 5 HHH PZAZZ
 WEB MS MORE GILEAN 912

EST. EPD'S: BW 2.2 WW 38 YW 65 M 18 M&G 38
FAT -0.006 REA 0.11 IMF -0.10
 • BW 100 ADJ 205 DAY WT 619 ADJ 365 DAY WT 1065
 • Note the carcass EPDs are plus on Ribeye and plus on IMF. Hard to find in the Hereford breed.



BRL Call 100L--Sire of Lot 364



LaGrand Headliner 117P ET--Lot 365

366 LaGrand Kaiser 09P Bull

P42539584 CALVED: JAN 19, 2004 TATTOO: 09P
 C-S PURE GOLD 98170 C GOLD RUSH 1ET
 MSU KAISER 46K C MS DOM 93218 1ET
 P42051937 MSU VICTORIA 9F BOYD HEAVY HITTER 4007
 MSU MISS EXCEL 9D

WNH PAYMASTER 9606 IGT 654 PAYLOAD 277S
 AA PAY LADY 837 MISS SNIZHONI 901
 P41057597 AA PRIORITY GAL 073 BT LW PRIORITY 479W
 AA MS CALIBER 876

EPD'S: BW 5.7 WW 44 YW 71 M 16 M&G 37
FAT -0.003 REA 0.18 IMF -0.04
 • BW 100 ADJ 205 DAY WT 687 ADJ 365 DAY WT 1194
 • Strong growth genetics abound in this top son of Kaiser. His dam is loaded with milk and a very heavy muscled cow. This bull will add pounds to your calf crop.



LaGrand Red Hot 23N--Lot 369



NJW 832W 3A Gloria 26E--Dam of Lot 370

365 LaGrand Headliner 117P ET Bull

P42538197 CALVED: MAR 15, 2004 TATTOO: 117P
 FELTONS 517 FELTONS 403
 MSU STAR HEADLINER F PRINCESS A80 (D0D)
 P24058815 WNH MS OPTIMA 9401 MSU OPTIMUM Z03
 MISS SNIZHONI 901

BR L1 DOMINO 5069 CL 1 DOMINO 386
 STAR SS ROXIE LT 128H BR L1 DOMINETTE 8030
 P41036341 CLF WISE GIRL Z51 BB MSU 15S WISDOM
 MKP CLF ALEXIS U15

EPD'S: BW 5.1 WW 48 YW 76 M 18 M&G 42
FAT 0.003 REA 0.11 IMF -0.01
 • BW 90 ADJ 205 DAY WT 794 ADJ 365 DAY WT 1340
 • A son of the National Champion, Headliner. The sire of 117P was a member of one of the all-time great flushes in the breed. Strong genetics from this outstanding youngster.

367 LaGrand Domino 77P ET Bull

P42538234 CALVED: FEB 28, 2004 TATTOO: 77P
EPD'S: BW 3.3 WW 42 YW 68 M 21 M&G 42
FAT 0.002 REA -0.01 IMF 0.01

• BW 95 ADJ 205 DAY WT 703 ADJ 365 DAY WT 1123
 • Note the dam's side of this 5069 son's pedigree. He is out of a Feltons 517 daughter, one of the most consistent sires in the breed.

368 LaGrand Domino 76P ET Bull

P42538230 CALVED: FEB 25, 2004 TATTOO: 76P

CL 1 DOMINO 386 L1 DOMINO 77618
 BR L1 DOMINO 5069 CL 1 DOMINETTE 832
 19532477 BR L1 DOMINETTE 8030 BR L1 DOMINO 5045
 BR L1 DOMINETTE 6049

FELTONS 517 FELTONS 403
 WCC FASTINATION F12 F PRINCESS A80 (D0D)
 P23907956 BOYD FASTINATION 69C HAROLDSON RAIDER P183 2Z
 BOYD FASINATION Z86
EPD'S: BW 3.3 WW 42 YW 68 M 21 M&G 42
FAT 0.002 REA -0.01 IMF 0.01
 • BW 100 ADJ 205 DAY WT 698 ADJ 365 DAY WT 1179
 • A grandson of 386, one of the most dependable bulls in the breed. Very nice numbers on this bull. A combination of two of the most predictable bulls in the breed, 386 and 517.

369 LaGrand Red Hot 23N Bull

Commercial CALVED: AUG 14, 2003 TATTOO: 23N
 RF TARGET 105A JR 15G PACER P202
 DJR LF RED HOT 913 CKP MISS HICKORY 505T
 P41143761 ROF RENAISSANCE 307F 4S RENEWAL
 BKR LADY HOT FLASH 31S

DAM IS A REGISTERED POLLED HEREFORD COW BUT NOT IDENTIFIABLE

• ADJ 205 DAY WT. 726 ADJ 365 DAY WT 1268
 • The Red Hot sons are thick, meaty cattle that possess a lot of loin. 23N is no exception. Be sure and look him up. He has the extra age to take care of a lot of cows.

370 LaGrand Pringle 134P ET Bull

P42540690 CALVED: FEB 25, 2004 TATTOO: 134P
 REMITALL KEYNOTE 20X REMITALL TEAMSTER 9T
 HAROLDSON'S PRINGLE 20X 12G REMITALL PATRICIA 99P
 P42177451 THE CLIFFS P183 JOY 5C JR NICK THE BUTLER P183
 THE CLIFFS 18L JOY 35W

CIRCLE-D WRANGLER 832W BAR H L1 CHANCE 55S
 NJW 832W 3A GLORIA 26E CRCLE D193 SILHOUET 335S
 P23839301 NJW P183 GLORIA 3A JR NICK THE BUTLER P183
 JR N61 GLORIA S151

EPD'S: BW 6.0 WW 53 YW 87 M 13 M&G 39
FAT -0.005 REA 0.28 IMF -0.05
 • BW 90 ADJ 205 DAY WT 698 ADJ 365 DAY WT 1123
 • A paternal brother to the Reserve Grand Champion Bull in Denver. A bull that will put a strong top in his calves. Note the 87 yearling EPD.

371 LaGrand Online 22N Bull

P42478949 CALVED: AUG 12, 2003 TATTOO: 22N
 REMITALL EMBRACER 8E REMITALL ACME 10A
 REMITALL ONLINE 122L PLAIN LAKE BELLE 20X 117P 5B
 P42254372 REMITALL CATALINA 24H MM RSM STOCKMASTER 512
 REMITALL CATALINA 139C

WLB WILLIS 25C 114F NJW Z17 VAQUERO 25C
 BIGLIENI HANNAH 9J SHELL-RIVER NICKIE 13C
 P42016605 BIGLIENI BETH 30X SBR BUTLER 58F 215R
 KLONDIKE DONNA 400L

EPD'S: BW 3.7 WW 47 YW 82 M 13 M&G 37
 FAT -0.003 REA 0.36 IMF -0.03
 • BW 100 ADJ 205 DAY WT 623 ADJ 365 DAY WT 1189
 • High growth, high ribeye....both mean more dollars in your pocket.
 22N will also leave a set of daughters that you will be proud of.



LaGrand Online 22N--Lot 371

372 LaGrand Online 27N Bull

P42478954 CALVED: AUG 17, 2003 TATTOO: 27N
 REMITALL EMBRACER 8E REMITALL ACME 10A
 REMITALL ONLINE 122L PLAIN LAKE BELLE 20X 117P 5B
 P42254372 REMITALL CATALINA 24H MM RSM STOCKMASTER 512
 REMITALL CATALINA 139C

WLB WILLIS 25C 114F NJW Z17 VAQUERO 25C
 BIGLIENI HANNAH 3H SHELL-RIVER NICKIE 13C
 P41094926 BIGLIENI PAULA 6F BIGLIENI MARY 5D
 BIGLIENI BETH 30X

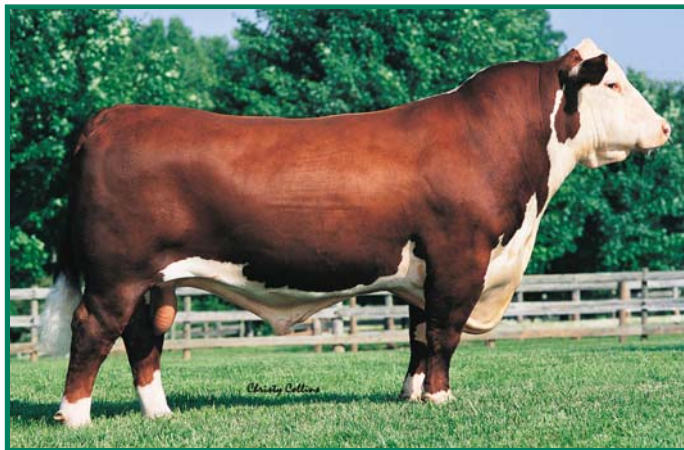
EPD'S: BW 4.2 WW 48 YW 83 M 15 M&G 39
 FAT -0.003 REA 0.35 IMF -0.03
 • BW 100 ADJ 205 DAY WT 580 WT 11-4-05 1440 LBS.
 • A high ribeye bull with a great yearling EPD. A lot of performance in this bull.

374 LaGrand Online 54P Bull

P42539077 CALVED: MAR 19, 2004 TATTOO: 54P
 REMITALL EMBRACER 8E REMITALL ACME 10A
 REMITALL ONLINE 122L PLAIN LAKE BELLE 20X 117P 5B
 P42254372 REMITALL CATALINA 24H MM RSM STOCKMASTER 512
 REMITALL CATALINA 139C

MID DISTANCE 8H S7R 218Y MERIDIAN 325D
 JUSTAMERE 8H BELL 952M TA-BAR LISA 108C
 P42523540 JUSTAMERE 304Z BELL 276H JUSTAMERE 30T ZOR0 304Z
 JUSTAMERE SLEW BELL 69TX

EPD'S: BW 1.1 WW 49 YW 84 M 9 M&G 34
 FAT -0.005 REA 0.38 IMF -0.02
 • BW 70 ADJ 205 DAY WT 670 ADJ 365 DAY WT 1188
 • A super low birth weight Online son that should work well on heifers.
 The Online daughters are milking well. Note the spread from birth to yearling.



*Remitall Online 122L
 Two-Time National Champion
 Sire of Lots 346, 348, 349,
 350, 371, 372, 374*

373 LaGrand Domino 39P Bull

P42538188 CALVED: MAR 20, 2004 TATTOO: 39P
 OXH DOMINO 7002 CL 1 DOMINO 1046
 FELTONS DOMINO 774 OXH KATE 5175
 P23864055 FELTONS B72 FELTONS 403
 FF MARCIA A85

FELTONS MANDATE 317 FELTONS ENDURANCE 745
 FELTONS CHRISTY R38 FELTONS DOMINETTE H50(D0D)
 P42347927 FELTONS 326 VICKI J41 FHR CAIRNS 19Y 29C
 FELTONS B83 (DOD)

EPD'S: BW 3.1 WW 46 YW 77 M 24 M&G 47
 FAT 0.19 REA 0.11 IMF 0.34
 • BW 90 ADJ 205 DAY WT 695 ADJ 365 DAY WT 1154
 • What a chance to own a son of Feltons Domino 774. This bull is a paternal brother to both Feltons Ozzie 492 and Feltons Legend 242, both highly sought after AI sires.



Feltons Ozzie 492--Paternal Brother to Lot 373



LaGrand Boomer 119P ET--Lot 375



K See K--Dam of Lots 375, 376, 377 & 378



JJD Shrek B8157 3111--Lot 379

380 LaGrand Shrek 24P Bull

42538208 CALVED: FEB 28, 2004 TATTOO: 24P
 MOHICAN TRM JAVA 25J BAR B MOHICAN HERITAGE
 SSF JJD SHREK 669 MOHICAN LADY 9G
 P42155926 MOHICAN LIZA 44F (DOD) REMITALL BOOMER 46B
 MOHICAN LIZA M59Z
 C-S PURE GOLD 98170 C GOLD RUSH 1ET
 JJD VICTORIA GOLD 2042 ET C MS DOM 93218 1ET
 P42353537 JJJ VICTORIA 109W 112 BTF FORAGE FINDER 109W
 JLH VICTRA 1106 U599

EPD'S: BW 4.9 WW 45 YW 73 M 24 M&G 47
FAT -0.004 REA 0.23 IMF -0.02
 • BW 92 ADJ 205 DAY WT 615 ADJ 365 DAY WT 1139
 • A Shrek son of our donor cow, 2042. The mother of 2042 is one of the very best cows in the Hereford industry. Extremely high maternal values here. The 112 cow is the dam of herd bulls and donor cows.

375 LaGrand Boomer 119P ET Bull

P42538199 CALVED: MAR 15, 2004 TATTOO: 119P
EPD'S: BW 3.2 WW 44 YW 80 M 21 M&G 43
FAT 0.004 REA 0.40 IMF 0.00

• BW 85 ADJ WW 833 WT 1-5-05 1249 LBS.
 • A low birth weight, great numbered son of 29F and many times champion, K See K. Many of the breed greats are in this pedigree.

376 LaGrand Boomer 118P ET Bull

P42538198 CALVED: MAR 15, 2004 TATTOO: 118P
EPD'S: BW 3.2 WW 44 YW 80 M 21 M&G 43
FAT 0.004 REA 0.40 IMF 0.00

• BW 85 ADJ 205 DAY WT 687 ADJ 365 DAY WT 1146
 • Tremendous spread in EPDs here. Below breed average for birth. Above breed average for weaning, yearling, milk, milk & grow and rea.

377 LaGrand Boomer 130P ET Bull

42538205 CALVED: MAR 19, 2004 TATTOO: 130P
EPD'S: BW 3.2 WW 44 YW 80 M 21 M&G 43
FAT 0.004 REA 0.40 IMF 0.00

• BW 85 ADJ 205 DAY WT 734 ADJ 365 DAY WT 1275
 • Tremendous ribeye. The dam is by NJW 1Y Wrangler 19D, one of the most predictable bulls in the breed. Reliable genetics here.

378 LaGrand Boomer 132P ET Bull

P42538206 CALVED: MAR 18, 2004 TATTOO: 132P
 REMITALL BOOMER 46B REMITALL KEYNOTE 20X
 CS BOOMER 29F RMTLL SALLYS LASS 120X
 P23925982 CS MISS 1ST FLAG 21A GS CHECKERED FLAG
 DS MS TOP PRIORITY 826

NJW 1Y WRANGLER 19D CIRCLE-D WRANGLER 832W
 K SEE K NJW FROSTY 1Y
 P41088043 KAYE KAYE GK EXCELLO 116B
 JR LB 621 SAPPHIRE Y163

EPD'S: BW 3.2 WW 44 YW 80 M 21 M&G 43
FAT 0.004 REA 0.40 IMF 0.00
 • BW 90 ADJ 205 DAY WT 682 ADJ 365 DAY WT 1303
 • A full brother to 119P, 118P, 130P. A chance to put four brothers with great EPDs to work in your herd.

379 JJD Shrek B8157 3111 Bull

P42370932 CALVED: MAY 1, 2003 TATTOO: 3111
 MOHICAN TRM JAVA 25J BAR B MOHICAN HERITAGE
 SSF JJD SHREK 669 MOHICAN LADY 9G
 P42155926 MOHICAN LIZA 44F (DOD) REMITALL BOOMER 46B
 MOHICAN LIZA M59Z

C-S PURE GOLD 98170 C GOLD RUSH 1ET
 JJD GOLDEN JEWEL B8 157 C MS DOM 93218 1ET
 P42185573 MMPH JEWEL B8 LOUADA 91U JUNEAU 12Y
 LADY LUCK HVH 606

EPD'S: BW 5.3 WW 45 YW 71 M 20 M&G 43
FAT -0.004 REA 0.22 IMF -0.04
 • BW 80 WW 680 YW 1289
 • A son of Shrek, who is rapidly becoming one of the popular sires in the breed. The grandam was a great donor cow and the dam of 311 is one of our top cows. A low birth weight bull that is above breed average in weaning, yearling, milk and milk & grow.

381 LaGrand Shrek 31N Bull

P42478958 CALVED: AUG 25, 2003 TATTOO: 31N
 MOHICAN TRM JAVA 25J BAR B MOHICAN HERITAGE
 SSF JJD SHREK 669 MOHICAN LADY 9G
 P42155926 MOHICAN LIZA 44F (DOD) REMITALL BOOMER 46B
 MOHICAN LIZA M59Z

WLB WILLIS 25C 114F NJW Z17 VAQUERO 25C
 BIGLIENI HANNAH 20H SHELL-RIVER NICKIE 13C
 P41045253 BIGLIENI MARY 4C BIGLIENI JOSIAH GOOD122R
 BIGLIENI BETH 30X

EPD'S: BW 4.3 WW 35 YW 55 M 16 M&G 33
FAT -0.002 REA 0.09 IMF -0.04
 • BW 100 ADJ 205 DAY WT 589 ADJ 365 DAY WT 1121
 • A Shrek son out of a Willis daughter. They are known for the milk and power they transmit to their offspring.

Polled Hereford Females

382 *LaGrand Dixie 109P ET* Heifer

P42539567 CALVED: MAR 10, 2004 TATTOO: 109P
 EPD'S: BW 3.3 WW 30 YW 51 M 21 M&G 37
 FAT 0.015 REA 0.14 IMF 0.05 • ADJ. WW 631

383 *LaGrand Dixie 114P ET* Heifer

P42539571 CALVED: MAR 13, 2004 TATTOO: 114P
 SR MARK I J215 C1 DOMINO 8015
 OXH MARK DOMINO 8020 SR MISS B MARK E549
 18950672 OXH KATE 6047 1ET CL 1 DOMINO 1046
 OXH RITA 1028

GERBER VOYAGEUR 80X GK VOYAGEUR S56
 GERBER 80X DIXIE 106Z GERBER 306R TRACY 57T
 P23488090 GERBER 2105 DIXIE 22S RHF VICTOR 767 2105
 GERBER 452M DIXIE 12P

EPD'S: BW 3.3 WW 30 YW 51 M 21 M&G 37
 FAT 0.015 REA 0.14 IMF 0.05 • ADJ. WW 697

• A beautiful pair of daughters of the high EPD bull, 8020. These heifers could be foundation females in your herd. The grandam and great grandam were foundation genetics for Gerber Polled Herefords. Excellent EPDs that can help any operation

384 *LaGrand Miss Kaye 136P ET Heifer*

P42540692 CALVED: FEB 29, 2004 TATTOO: 136P
 EDP'S: BW 5.5 WW 48 YW 82 M 9 M&G 33
 FAT -0.006 REA 0.31 IMF -0.05 • ADJ. WW 705

385 *LaGrand Miss Kaye 138P ET Heifer*

P42540693 CALVED: FEB 29, 2004 TATTOO: 138P
 REMITALL KEYNOTE 20X REMITALL TEAMSTER 9T
 HAROLDSON'S PRINGLE 20X 12G REMITALL PATRICIA 99P
 P42177451 THE CLIFFS P183 JOY 5C JR NICK THE BUTLER P183
 THE CLIFFS 18L JOY 35W

GK EXCELLO 116B GK FED EX 500Z
 KAYE KAYE JFR 211D VICKIE U81 72R (DOD)
 P23897189 JR LB 621 SAPPHIRE Y163 WS APPROVAL 621
 JR LB 604M CRYSTAL S190

EPD'S: BW 5.5 WW 48 YW 82 M 9 M&G 33
 FAT -0.006 REA 0.31 IMF -0.05 • ADJ. WW 746

• Daughters of Kaye Kaye, a many times champion. A female that transmits muscle to her offspring. These heifers will produce big, stout calves that will be at the top of your calf crop.

386 *LaGrand Miss 3008 06P* Heifer

P42538183 CALVED: JAN 14, 2004 TATTOO: 06P
 FELTONS 517 FELTONS 403
 RRR MR FELT 3008 F PRINCESS A80 (DOD)
 P23703420 RRR MS VICT 6191 RHF VICTOR 767 2123
 RRR MS PROSP 786

GERBER ACCLAIM 43A FELTONS 488
 SCHU-LAR 43D OF 1055 43A GERBER KR DIXIE 7X
 P24014992 G&R JUSTA A DOLL 1055 G&R JUSTA GUY 834
 G&R DOLLY 480

EPD'S: BW 2.3 WW 44 YW 78 M 18 M&G 40
 FAT -0.006 REA 0.05 IMF 0.12 • ADJ. WW 512

• A paternal sister to our Reserve National Champion Female, DAN 3008 Foxy Gal 2E 1N. 3008 is the number one bull in the breed for all traits.

388 *LaGrand Hannah 22P* Heifer

P42538185 CALVED: FEB 26, 2004 TATTOO: 22P
 AA BOOMER 611 REMITALL BOOMER 46B
 AA PRF WIDELOAD EF IDEALIST PENNY 812
 P42325186 PRF MS SCARLETT 919 NJW 1Y WRANGLER 19D
 AA IMPERIAL LADY 2119

WLB WILLIS 25C 114F NJW Z17 VAQUERO 25C
 BIGLIENI HANNAH 15J SHELL-RIVER NICKIE 13C
 P42016607 B&S GRACEFUL LADY 43U B&S BIG MAC 141N 26S
 B&S VICTORIA 701S (DOD)

EPD'S: BW 2.5 WW 33 YW 52 M 15 M&G 31
 FAT 0.001 REA 0.17 IMF -0.05 • ADJ. WW 533

• Note this top Wideload daughter. Note birth epd. The 701S is a Dam of Distinction still at 11 years of age.



OXH Mark Domino 8020--Sire of Lots 382 and 383



Kaye Kaye--Dam of Lots 384 and 385

387 *LaGrand Victoria 15P* Heifer

P42538184 CALVED: FEB 12, 2004 TATTOO: 15P
 FELTONS SOUNDER 912 FELTONS LUTE 680
 FELTONS LOCOMOTIVE 204 FF MARCIA A71 (DOD)
 P42016167 FELTONS MATRON G42 (DOD) FELTONS MATTHEW 597
 DR MISS DERADO 974

C MILESTONE 9150 C L1 MILE HIGH 2ET
 BB 9150 VICTORIA 6M HH MISS ADVANCE 104A (DOD)
 P42354889 BB 25C VICTORIA 8H WLB WILLIS 25C 114F
 BOYD VICTORIA 4030

EPD'S: BW 3.4 WW 34 YW 54 M 18 M&G 35
 FAT -0.004 REA -0.07 IMF 0.08 • ADJ. WW 532

• A granddaughter of Feltons Sounder 912, whose daughters were highly sought after in the Felton dispersion. The dam of 15P was a highly successful show heifer that has made an excellent cow.

389 *LaGrand Legacy 11P* Heifer

P42539088 CALVED: FEB 1, 2004 TATTOO: 11P
 RJH MOMENTUM H45 3D NO LIMIT 09E
 RJH NEW DIMENSION K40 JR Y168 GLORIA C104
 P42052450 RJH ALLURE PINNACLES PROSPECT B21
 MISS VICTRES DAY

CES VICTOR 103T P189 RHF IGT VICTOR 103T
 BIGLIENI LEGACY 18G JLN VICTORIA 2105 X267
 P24053420 GK LADY VICKIE 212 SBR BUTLER 58F 215R
 GF VICKIE 212

EPD'S: BW 4.3 WW 42 YW 70 M 21 M&G 43
 FAT -0.004 REA 0.22 IMF -0.04 • ADJ. WW 553

• Tremendous epds on this New Dimension daughter. Above breed average for weaning, yearling and milk.