

LaGrand

ANGUS & HEREFORD RANCH

Annual Bull & Female Sale

Saturday, April 14, 2007

11 a.m. CT x Canova, South Dakota

**Held at LaGrand Angus and Hereford Ranch North
(11 miles north of Salem, South Dakota)**

Selling 480 Lots

254 Angus Bulls

20 Hereford Bulls

172 Angus Heifers

11 Hereford Heifers

23 Commercial Heifers

Welcome to LaGrand!

LaGrand

ANGUS & HEREFORD RANCH

Lance Pankratz, owner
Office (605) 925-7611 ✕ Home (605) 925-4283
Cell (605) 359-9221 ✕ Fax (605) 925-4354
44130 279th St. ✕ Freeman, SD 57029
E-mail: lagrand@gwtc.net ✕ www.lagrandranch.com

Dear Cattlemen,

Welcome to the LaGrand Angus & Hereford Ranch eighth Annual Bull and Female Sale. We are proud to say that we have had an absolute wonderful year since the last spring sale, despite the drought. One of our main herd sires, LaGrand Reload 80P, was named Grand Champion Hereford Bull at the National Western in Denver. We are offering a few animals sired by him this year, with many more to come in the upcoming sales. Also, we had the honor of receiving Supreme Champion Bull at the Black Hills Stock Show with LaGrand Structure 5775, now known as LaGrand MAF Antidote 5775. These are just two of the major and many accomplishments that we achieved this year. Most of all, we think the greatest pleasure has come from renewing old friendships and making new ones. Our other herd sires continue to do well — selling semen and producing calves across the world.

I just want to remind everyone that we still have our second to none guarantee, and our discounts have stayed the same. We will start at 11 a.m. again, and don't forget to bring your trailers sale day to get an extra \$50 off per bull if you haul your own, otherwise we will deliver your bull free of charge. We will have GeneSTAR data on some of the top bulls and all the females by sale day. We feel that this is an important tool that will be used extensively in the years to come. All of the animals have been blood tested negative for Johne's Disease, BLV and BVD PI. We will also provide ultrasound and performance data sale day. If you want to preview any of the information prior to sale day, please contact us. We try to go above and beyond to provide you with all the necessary information and tools to improve your buying experience. If you cannot make the sale, please use our sight-unseen policy and buy with confidence. A copy of the sale offering will be available for preview and Superior Livestock will air the sale live on RFD TV.

I feel obligated to produce the best type of cattle that will work for the commercial cattleman as well as the purebred producer and I think there is something in this sale that will fit your needs. I look forward to visiting with all of you on the 14th.

Sincerely,

Lance LaGrand Pankratz



Lance LaGrand Pankratz



Duane and Laura Pankratz



Alex



Ben



Dan



Dave



Gary



James



Jared



Jess



Justin



Malynnda



Merlyn



Mike



Stephen



Steven



Virgil

LaGrand's Annual Bull and Female Sale ✕ April 14, 2007 ✕ Canova, SD



Saturday, April 14, 2007

11 a.m. CT ✕ Canova, South Dakota
Held at LaGrand Angus and Hereford Ranch North
(11 miles north of Salem, South Dakota)

Sale Day Phones

(605) 523-2000 ✕ (605) 523-2002 ✕ (605) 523-2003

MCS AUCTION
AND SPECIALIZED MARKETING
MATT SIMS Phone: (405) 348-3955
1701 NW 183rd St. Fax: (405) 348-7090
Edmond, OK 73003 Cell: (405) 641-6081
E-mail: mattcsims@aol.com

Dear Friends and Fellow Cattle Breeders:

Welcome to the 8th Annual LaGrand Angus and Hereford Ranch Spring Bull and Female Sale. Our industry is a fast evolving environment, and LaGrand is working diligently to stay abreast by using superior genetics to help meet your demands and provide you with a reliable seedstock source. Whether you look to Angus and Hereford cattle for calving ease, weaning or yearling growth, carcass quality or a combination of all these, they offer genetics to fit your needs. The bulls and females are screened based on individual performance, EPDs and visual appraisal, and have ultrasound data collected on them. All bulls must also pass a breeding soundness examination and all of the bulls and heifers have been blood tested negative for Johne's disease, BLV and BVD PI. Several are a result of embryo transplant, thus providing you with the opportunity to increase uniformity in your calf crop by selecting brothers to cover your herd.

LaGrand Angus and Hereford Ranch realizes that you have many options in your sire selection. They hope to be your chosen seedstock source by providing you with a superior product as well as outstanding customer service. I believe that this set of bulls possesses the individual performance, genetic predictability and proven heritage to suit your needs.

It has been an honor to work with Lance, Doc and the crew at LaGrand in the preparation for this sale, and I am excited about the future that their breeding program has to offer. We look forward to seeing you on Saturday, April 14, 2007, and as always, if I can assist you in any way prior to or on sale day, please let me know.

Sincerely,

Matt Sims



Matt Sims

**ACKNOWLEDGEMENTS
PHOTOGRAPHY**

Lance Pankratz, Malynda Carter and Matt Sims

ADVERTISING & CATALOG

Prepared by MCS Auction, LLC and Specialized Marketing, (405) 348-3955
Produced by Lisa Bryant, The Cowboy Connection, (580) 332-7480 or
cowboyconnection@sbcglobal.net

LaGrand

ANGUS & HEREFORD RANCH

AUCTIONEERS:

Tracy Harl, Hastings, Nebraska
Matt Sims, Edmond, Oklahoma

LIVESTOCK PUBLICATION REPRESENTATIVES:

Vern Frey, *Angus Journal*
Jeff Kapperman, *Tri-State Neighbor*
Jim Gies, *Western Livestock Journal*
Jim Danekas, *Angus, The Magazine*
Kirby Goettsch, *Western Livestock Reporter*
Scott Dirk, *Western Livestock Reporter*
Chris Effling, *Dakota Farmer*
Jay Elfeldt, *Hereford World*
Jim Scheel, *Cattle Business Weekly*
Robbie Schacher, Schacher Auction Services

Buyers unable to attend the sale may send their bids to the Sale Manager, Regional Manager, Field Representatives or Auctioneer.

SALE MANAGER:

MCS AUCTION

AND SPECIALIZED MARKETING

MATT SIMS Phone: (405) 348-3955
1701 NW 183rd St. Fax: (405) 348-7090
Edmond, OK 73003 Cell: (405) 641-6081
E-mail: mattcsims@aol.com

SALE CONSULTANTS:

Art Handel, Rapid City, SD, (605) 391-8233
Bob McGill, Lone, CA, (916) 996-9471, (209) 274-6362
Steven Lastovica, Milano Livestock Exchange, Salado, TX,
(254) 770-8650,
Cell (512) 455-7641, Office (254) 947-3677
Joseph Kvigne, Dell Rapids, SD, (605) 670-1785

DIRECTIONS TO THE SALE SITE:

At LaGrand Ranch North, the former Bon View Farm,
Canova, South Dakota.
Eleven miles north of Salem, South Dakota, on Hwy. 81, or
from Hwy. 34-81 junction, go eight miles south on Hwy. 81.

AIR TRANSPORTATION:

Sioux Falls, South Dakota, Airport is approximately 53 miles
from the sale site. From the airport, go west on I-90 for 32
miles to Exit 364 Salem/Yankton. Turn right and go north on
Hwy. 81 for 16 miles. Ranch is located on the east side of
Hwy. 81. LaGrand Ranch will gladly meet your flight given
prior notice.

SUPPLEMENT INFORMATION WILL BE AVAILABLE SALE DAY

This will include current pelvic and scrotal information, any
updated AHIR Data and GeneSTAR information.

HERD HEALTH:

All cattle will be accompanied with proper health papers for
immediate shipment. All bulls selling have been fertility tested
by the herd veterinarian. All bulls have received Vira Shield,
Lepto and 7-way Clostridium. They are immunized for both Type
1 and Type 2 BVD, Rednose, Para Influenza and BRSV. All sale
cattle have been blood tested negative for Johne's disease,
BVD PI and Bovine Leukosis Virus (BLV).

TERMS AND CONDITIONS:

Terms of the sale are cash, and all settlements must be made at
the close of the auction. Cattle will sell under the Terms and
Conditions as recommended by the American Angus Association
or American Hereford Association, depending on the breed.

LIVESTOCK MORTALITY INSURANCE:

A representative from American Live Stock Insurance Company
will be available to assist you with mortality insurance for your
purchases.

RETAINED INTEREST:

LaGrand retains a one-third semen interest in each bull in this
sale book except where otherwise listed.

DELIVERY:

LaGrand Ranch offers free delivery on bulls in the continental
United States to central points. Or take advantage of our
special Sale Day Only — Haul Your Own Discount, and receive
\$50 per bull discount if you bring your own trailer sale day and
haul your own. NO DISCOUNT ON FEMALES.

VOLUME & OTHER DISCOUNTS:

If you purchased a bull at last year's sale, you will be receiving a
5% discount on bull purchases this year. Anyone who purchases
a bull this year will receive a 5% discount on a bull at our 2008
sale. A 5% discount will also be given on the purchase of five or
more bulls. NO DISCOUNTS ON FEMALES.

LIVESTOCK CONDITIONING:

These bulls and heifers were raised on a high roughage ration to
ensure their maximum breeding potential.

INSPECTION:

Cattle may be inspected before the sale at LaGrand Angus and
Hereford North Ranch, Canova, South Dakota.

ANNOUNCEMENTS

Announcements at the sale by the owners or the auctioneer will
take precedence over statements in the sale book. We reserve
the right to withdraw any bull not meeting our specifications
before sale time. All persons who attend the sale do so at their
own risk. Neither the owners nor the sale manager assume
liability, legal or otherwise, for accidents or loss of property. As
the sale manager, MCS Auction and Specialized Marketing is
only an agent for the seller and has no responsibilities other
than those involved in conducting the sale.



Second To None Guarantee!

LaGrand Ranch guarantees all bulls against any injury that would keep them from being a breeder for the first breeding season. Breeding season is defined as the first 90-day period following first turnout of bulls! If a problem occurs, we will bring you a suitable replacement or you will receive full credit, minus the salvage value of the original bull, toward another purchase. LaGrand Ranch will provide ongoing customer service and focuses on buyer satisfaction. The bottom line is that our customer is happy. This credit or replacement guarantee pertains strictly to the physical loss of the bull.

SALE DAY PHONES:

(605) 523-2000, (605) 523-2002, (605) 523-2003

ACCOMMODATIONS:

Ramkota Hotel Best Western
1-29 Russell St.
Sioux Falls, SD, (605) 336-0650

Freeman Country Inn
Hwy. 81
Freeman, SD, (605) 925-4888

Ramada Inn Airport
1301 W Russell St.
Sioux Falls, SD, (605) 336-1020

Sheraton
1211 North West Ave.
Sioux Falls, SD, (605) 331-0100

Holiday Inn
1625 W. Havens St.
Mitchell, SD, (605) 996-6501

Home Motel
Salem, SD, (605) 425-2828

(A block of rooms has been reserved at both Ramkota Hotel and the Freeman Country Inn. Please ask for the LaGrand Ranch rate.)

Upon request, LaGrand Ranch will be happy to make reservations for you. Please call Malynnda or Jess at (605) 925-7611.

Visit the Angus Journal Web site, www.angusjournal.com or our Web site, www.lagrandranch.com, and view this sale book online.

Some of our recent successes in the show ring:



LAGRAND RELOAD 80P

The reigning 2007 National Western Grand Champion Hereford Bull



LAGRAND MAF ANTIDOTE 5775

The reigning 2007 Supreme Champion Bull at the Black Hills Stock Show

How to Read and Use The Information in This Sale Book

1	Lot Name Sex: Registration Number • Tattoo • Calved Date	Act. Bw 14
Paternal Grandsire	Adj. WW 15	
Sire Paternal Granddam	Adj. YW 16	
Maternal Grandsire	Adj. SC 17	
Dam Maternal Granddam	Adj. IMF 18	
	Adj. REA 19	

1	2	3	4	5	6	7	8	9
CED	BW	WW	YW	Milk	SC	%IMF	RE	Fat
1	2	3	4	5	6	7	8	9
SW (Weaning)		SF (Feedlot)			SG (Grid)		SB (Beef)	
10		11			12		13	

1. CED EPD

Predicts the average difference in ease with which a sire's calves will be born when bred to first-calf heifers when compared to another sire, expressed as a percentage of unassisted births. A higher value indicates greater calving ease in calves out of first-calf heifers.

2. BW EPD

The birth weight EPD is a figure expressed in pounds and is a predictor of an individual's contribution to its progeny's weight at birth and is a comparison to breed average. One of the greatest concerns in regard to birth weight is its effect on the calving-ease of the first calf heifers. It is a general rule of thumb that a Birth Weight EPD up to +3.0 is acceptable on most first calf heifers.

3. WW EPD

The weaning weight EPD is expressed in pounds as the amount of increase or decrease in weaning weight you would expect from the progeny of a bull compared to an average bull of the breed for weaning weight.

4. YW EPD

The yearling weight EPD applies the same way as weaning weight EPD only in yearling form.

5. MILK EPD

The milk EPD is a predictor of a sire's genetic merit for milk and mothering ability as expressed in his daughters, or in other words that part of weaning weight attributed to milk production.

6. SC EPD

A predictor of the progeny differences in transmitting ability of a sire for scrotal size compared to that of another sire, expressed in centimeters.

7. INTRAMUSCULAR FAT (%IMF)

Is a predictor of the difference in a sire's progeny for percent intramuscular fat in the ribeye muscle compared to an average sire in the Angus breed.

8. RIBEYE AREA (RE)

Is a predictor of the difference in square inches of ribeye area of a sire's progeny, compared to the progeny of an average sire in the Angus breed.

9. FAT (FAT)

Expressed in inches, is a predictor of the difference in external fat thickness of a sire's progeny compared to the progeny of an average sire in the Angus breed. Measurements taken between the 12th and 13th ribs and over the rump are used to generate the Fat EPD.

10. \$W (WEANING)

The expected average difference, expressed in dollars per head, in future progeny performance for preweaning merit.

11. \$F (FEEDLOT)

The expected average difference in future progeny performance for postweaning merit compared to progeny of other sires, expressed in dollars per head.

12. \$G (GRID)

The expected average difference in future progeny performance for carcass grid merit compared to progeny of other sires, expressed in dollars per head.

13. \$B (BEEF)

The expected average difference, expressed in dollars per head, in combined progeny postweaning performance and carcass value compared to progeny of other sires.

14. BW

Birth weight is the actual weight of a calf taken in pounds within 24 hours after birth.

15. ADJ. WW

205-day adjusted weight is the weaning weight of a calf adjusted to a common age of 205-days and adjusted for the age of the dam, for accurate comparison reasons.

16. ADJ. YW

365-day adjusted weight is the yearling weight of a calf adjusted to a common age of 365 days and adjusted for age of the dam, for accurate comparison reasons.

17. ADJ. SC

Scrotal circumference of a calf adjusted to a common age of 365 days and adjusted for age of the dam, for accurate comparison reasons.

17. ADJ. IMF

Percent intramuscular fat of a calf adjusted to a common age of 365 days and adjusted for age of the dam, for accurate comparison reasons.

18. ADJ. REA

Rib eye area of a calf adjusted to a common age of 365 days and adjusted for age of the dam, for accurate comparison reasons.

+ : Embryo transfer animal

: Pathfinder

If you are unable to attend the sale, watch and bid live via Satellite.

Superior's live audio and pretaped video of each animal selling will be broadcast via satellite by Superior Productions on RFD-TV, DishNetwork channel 9409 and DirecTV channel 379. Interested buyers can call in and bid live on the animal that is selling. Superior Productions representatives handling the phones will turn the bid in directly to the auctioneer. Information and a video buyer's number can be received by contacting Superior Productions at (800) 431-4452 prior to sale day. Live sale footage can also be viewed at www.superiorlivestock.com, with bidding done by phone.



Suggested guidelines for best results when using yearling bulls

We are firm believers in the use of yearling bulls and feel it is one of the best years of their lives. It is a time when they are easy to manage and their only concern is breeding cows. We have found that when yearling bulls are managed carefully, they will perform better over time than bulls purchased as two-year-olds. Here are some suggested guidelines for care of yearling bulls; and to help ensure your 100% guarantee.

- Upon receipt at your ranch, keep yearling bulls separate from older bulls and feed them a maintenance ration of 5- to 8-lbs./head of grain (corn, oats or bull pellets) and free choice of hay. Reduce the amount of grain fed gradually, so bulls are on straight hay or grass two weeks prior to turning them out.

- Where possible, try to limit the bulls to 45 to 60 days of pasture service the first year. At this

time or as soon as possible, remove the bulls and put them in separate pastures with plenty of good quality grass.

- It is best to feed yearling bulls separate from older bulls until after their second breeding season. This allows them to achieve the growth and strength necessary to compete with older bulls for feed and space.

- A winter-feeding ration of 2- to 4-lbs. of grain, cake or pellets plus free choice hay will put the bulls in condition and allow them to grow and develop through the winter. The little added cost and care of feeding a yearling bull is usually made up for the average discount in price when buying yearlings versus two-year-olds. You will also benefit by one and probably two or three more years of use out of a well-managed and healthy bull purchased as a yearling.

Our Feeding Program

OVERVIEW

On behalf of Hubbard Feeds Inc. and myself, welcome to the 2007 LaGrand Angus & Hereford Ranch Performance Bull and Female Sale. It is my pleasure to work as the Nutritionist for LaGrand. I think you will agree that LaGrand continues to produce and promote the type of Angus and Hereford cattle that meet the needs and exceed the expectations of both the commercial and purebred producer. Together with LaGrand, I strive to develop optimal nutritional and management programs to match and express the genetic potential of the LaGrand breeding and show stock while giving special attention to safeguarding soundness and reproductive longevity.

NUTRITIONAL PHILOSOPHY

LaGrand Angus and Hereford Ranch, Hubbard Feeds Inc, and I believe in the concept of developing bulls and replacement females, not finishing them. The nutritional treatment of breeding stock from birth to breeding can have a profound effect on their lifetime reproductive potential. For this reason, LaGrand bulls and replacement females are developed on high

fiber diets from weaning to sale time. The goal at LaGrand is to express the lean gain potential of the cattle without compromising structural integrity and breeding performance.

BULL AND REPLACEMENT FEMALE DEVELOPMENT

To properly develop the LaGrand Angus and Hereford breeding stock, we pay special attention to their energy, protein, trace mineral, and vitamin requirements. Bulls and replacement females are developed on high-fiber, moderate-energy, and high-protein diets. Particular attention is given to proper vitamin and trace mineral supplementation to maximize reproductive development and ensure reproductive longevity. To this end, trace mineral supplementation includes organic trace minerals (Zinpro). We think that you will agree that our nutritional philosophy has produced an exceptional set of fertile breeding bulls and replacement females that are ready to go to work for you. Buy with confidence.

D. Allen Stateler, Ph.D.
Field Beef Nutritionist
Hubbard Feeds Inc.



*In a Class
of it's Own™*

Through our exclusive
line of DNA tests,
Bovigen provides
an easy and
accurate way to
help increase

Quality Grade
and
Tenderness

that can bring
your beef into the
finest restaurants.

GeneSTAR®



Preserve Sample Identification
Repeatable Genetic Analysis:
Genetic Markers for Animal Quality
& Management
Genetic Markers for Beef Quality
& Management
Parentage
DNA Traceability

INDEPENDENT 3RD PARTY VALIDATION

BOVIGEN
LLC

www.bovigen.com

*

1.877.BEEF.DNA



A QLC LaGrand Forum
 Bull: 14476613 • Tattoo: 019P • Calved: 3/17/2003

#TC Stockman	#TC Stockman
G 13 Structure	TC Pride 0014
#G 13 Traveler 9428	Oneills Renault 982
	G13 Prosperity Traveler 9266
H A L NT Bandoier Lad 168	#A A R New Trend
QLC B7 Blackbird X553A	H A L Eileenmere Eborea 132
QLC A110 Blackbird T265X	+Q L C Tower
	Q L C A48 Blackbird M697T

Act. Bw	88
Adj. WW	809
Adj. YW	1475
Adj. SC	
Adj. IMF	3.13
Adj. REA	17.6

CED	BW	WW	YW	Milk	SC	%IMF	RE	Fat
-1	+3.6	+51	+90	+17	+74	-10	+68	-022
\$W (Weaning)		\$F (Feedlot)		\$G (Grid)		\$B (Beef)		
+23.94		+30.06		+14.10		+41.15		

FOR REFERENCE ONLY.

Featuring bulls from the LaGrand herd sire who was the 2005 Roll of Victory Reserve Show Bull of the Year and the 2006 ROV Show Bull of the Year. This dominant champion was the Grand Champion Bull of the 2006 National Western Stock Show, 2005 North American International, 2004 North American International, 2005 Dixie National ROV and the 2005 Atlantic National ROV where he was also the Supreme Champion. As well, he topped the 2005 World Beef Expo ROV, the 2005 Oregon State Fair ROV and the 2006 Fort Worth ROV, also being Reserve Junior Champion of both the 2005 National Western and the 2005 Fort Worth ROV. QLC LaGrand Forum currently records both the second highest Weaning Weight EPD and the second highest Ultrasound Ribeye Area EPD in the Spring 2005 National Sire Evaluation Supplement while also ranking in the top one percent for Yearling Weight EPD, recording individual weaning and yearling ratios of 123 and 124 respectively in combination with an individual ultrasound ribeye ratio of 130 with his first 23 progeny combining an average birth ratio of 99 with an average weaning ratio of 105 and his first five yearling progeny recording an average ratio of 105. The sire of this bull combines a below breed average Birth Weight EPD with both a Weaning Weight EPD and a Yearling Weight EPD which rank in the top three percent and a Scrotal EPD in the top one percent along with an Ultrasound Ribeye Area EPD in the top two percent, while the dam of this bull records a progeny weaning ratio of 104 on 12 calves and a progeny yearling ratio of 107 on eight head in combination with a progeny ultrasound ribeye ratio of 111 on three head.



QLC LAGRANF FORUM — The 2005 North American International Grand Champion Bull



QLC LAGRANF FORUM — The 2006 National Western Grand Champion Bull



W
Lot 1

Denver Carload Member



W
Lot 2

Denver Carload Member

1 LaGrand Marathon 6141

Bull: 15446148 • Tattoo: 6141 • Calved: 1/11/2006

O C C Kirby 633K
B C Marathon 7022
Gibbet Hill Mignonne E37

#+O C C Emblazon 854E
+O C C Blackbird 785H
#Papa Equator 2928
Gibbet Hill Mignonne TR 29

#B C C Bushwacker 41-93
LaGrand Forever Lady 2439
Moffitt Forever Lady 03J

#Paramont Ambush 2172
R C Anita T Bando 918903
#G A R Precision 1680
Ponderosa Forever Lady 127

Act. BW	94
Adj. WW	728
Adj. YW	1459
Adj. SC	39.44
Adj. IMF	2.33
Adj. REA	15.8

CEU	BW	WW	YW	Milk	SC	%IMF	RE	Fat
+2	+3.7	+55	+95	+21	+1.01	+1.08	+1.55	-1.011
\$W (Weaning)		\$F (Feedlot)		SG (Grid)		SB (Beef)		
+26.03		+33.67		+15.49		+42.99		

Ranks in the top 3% for WW
Ranks in the top 10% for YW, RE, SF
Ranks in the top 15% for Fat, SB
Dam posts ratios of BR 2@95, YR 2@101
WW ratio 105; YW ratio 112; RE ratio 107

2 LaGrand Marathon 6072

Bull: 15474574 • Tattoo: 6072 • Calved: 1/6/2006

O C C Kirby 633K
B C Marathon 7022
Gibbet Hill Mignonne E37

#+O C C Emblazon 854E
+O C C Blackbird 785H
#Papa Equator 2928
Gibbet Hill Mignonne TR 29

Hyline Right Time 338
LaGrand Pride 4062
Freds Pride 216

#+Leachman Right Time
Hyline Pride 265
Roths Millcreek Unique
Freds Pride 911

Act. BW	79
Adj. WW	766
Adj. YW	1398
Adj. SC	40.78
Adj. IMF	2.15
Adj. REA	14.7

CEU	BW	WW	YW	Milk	SC	%IMF	RE	Fat
+7	+1.6	+65	+101	+24	+1.10	+1.12	+1.67	+1.006
\$W (Weaning)		\$F (Feedlot)		SG (Grid)		SB (Beef)		
+35.88		+35.92		+15.45		+44.96		

Ranks in the top 1% for WW, \$W
Ranks in the top 3% for YW
Ranks in the top 4% for RE
Ranks in the top 5% for SF
Ranks in the top 10% for \$B
Ranks in the top 20% for Milk
Dam posts ratios of BR 1@96, WR 1@123, YR 1@112, RE 1@104
WW ratio 123; YW ratio 112



Denver Carload Member

Lot 3



Denver Carload Member

Lot 4

3 LaGrand Marathon 6802

Bull: 15446153 • Tattoo: 6802 • Calved: 1/7/2006

O C C Kirby 633K
B C Marathon 7022
Gibbet Hill Mignonne E37

#+O C C Emblazon 854E
+O C C Blackbird 785H
#Papa Equator 2928
Gibbet Hill Mignonne TR 29

#B/R New Design 323
#+LaGrand Blacklass 241
Broken Arrow Roth MS RUSS808

#B/R New Design 036
B/R Ruby of Tiffany 155
#+Gdar SVF Russ 184B
Brokenarrow Blacklass3904-18

Act. BW	80
Adj. WW	794
Adj. YW	1431
Adj. SC	32.97
Adj. IMF	2.23
Adj. REA	13.6

CED	BW	WW	YW	Milk	SC	%IMF	RE	Fat
+9	+9	+57	+94	+22		1+.06	1+.33	1-.001
SW (Weaning)		SF (Feedlot)		SG (Grid)		SB (Beef)		
+32.91		+31.81		+11.92		+38.96		

Ranks in the top 1% for \$W
Ranks in the top 2% for WW
Ranks in the top 10% for YW
Ranks in the top 15% for CED, SF
Dam posts ratios of WR 3@112, YR 2@106, RE 2@102
WW ratio 121

4 LaGrand Marathon 6038

Bull: 15446146 • Tattoo: 6038 • Calved: 1/3/2006

O C C Kirby 633K
B C Marathon 7022
Gibbet Hill Mignonne E37

#+O C C Emblazon 854E
+O C C Blackbird 785H
#Papa Equator 2928
Gibbet Hill Mignonne TR 29

#Connealy Freightliner
+LaGrand Miss Countess 3122
+Grubbs Miss Countess 252

#Bon View Bando 598
Joana Erica of Conanga
#TC Dividend 963
D G Miss Countess 535

Act. BW	71
Adj. WW	799
Adj. YW	1365
Adj. SC	41.68
Adj. IMF	2.75
Adj. REA	13.7

CED	BW	WW	YW	Milk	SC	%IMF	RE	Fat
+9	-0.1	+59	1+.90	+22	1+.28	1+.12	1+.29	1+.016
SW (Weaning)		SF (Feedlot)		SG (Grid)		SB (Beef)		
+36.16		+26.84		+11.86		+37.00		

Ranks in the top 1% for WW, \$W
Ranks in the top 10% for BW
Ranks in the top 15% for CED, YW
Dam posts ratios of BR 1@83, WR 1@115, YR 1@105, %IMF 1@121
YW ratio 105; IMF ratio 121



Denver Carload Member
Lot 6



Denver Carload Member
Lot 5

5 LaGrand Marathon 6221
Bull: 15446151 • Tattoo: 6221 • Calved: 1/18/2006

O C C Kirby 633K	#+O C C Emblazon 854E	Act. BW
B C Marathon 7022	+O C C Blackbird 785H	90
Gibbet Hill Mignonne E37	#Papa Equator 2928	Adj. WW
	Gibbet Hill Mignonne TR 29	744
		Adj. YW
		1403
		Adj. SC
		41.16
		Adj. IMF
		3.08
		Adj. REA
		13.4

Hylne Right Time 338 #+Leachman Right Time
LaGrand Ms Right Time 4002 Hylne Pride 265
+LaGrand Ms Famous 2585 #Famous 7001
+G A R Precision 2445

CED	BW	WW	YW	Milk	SC	%IMF	RE	Fat
+5	+2.7	+61	1+101	+22	1+14	1+24	1+55	1-010
SW (Weaning)		SF (Feedlot)		SG (Grid)		SB (Beef)		
+30.66		+37.56		+20.36		+50.08		

Ranks in the top 2% for \$B
Ranks in the top 3% for YW, SW
Ranks in the top 5% for \$F
Ranks in the top 10% for RE
Ranks in the top 15% for Fat
Ranks in the top 20% for \$G
Dam posts ratios of WR 1@119, YR 1@112, %IMF 1@141
WW ratio 119; YW ratio 112; IMF ratio 141

6 LaGrand Marathon 6161
Bull: 15474576 • Tattoo: 6161 • Calved: 1/13/2006


O C C Kirby 633K	#+O C C Emblazon 854E	Act. BW
B C Marathon 7022	+O C C Blackbird 785H	88
Gibbet Hill Mignonne E37	#Papa Equator 2928	Adj. WW
	Gibbet Hill Mignonne TR 29	785
		Adj. YW
		1351
		Adj. SC
		41.0
		Adj. IMF
		2.52
		Adj. REA
		12.8

+B/R New Frontier 095 #B/R New Design 036
M A R New Blackcap 432 White Fence Pride H1
+Grandview Womack Blkcp 232 #Vermilion Dateline 7078
+G P R 2067 Blackcap H94

CED	BW	WW	YW	Milk	SC	%IMF	RE	Fat
+3	+3.5	+61	1+97	+21	1+20	1+10	1+20	1-006
SW (Weaning)		SF (Feedlot)		SG (Grid)		SB (Beef)		
+29.79		+33.33		+12.44		+40.64		

Ranks in the top 1% for WW
Ranks in the top 5% for YW
Ranks in the top 10% for \$W, \$F
Ranks in the top 20% for \$B
Dam posts ratios of WR 1@113, YR 1@104, %IMF 1@111
WW ratio 113; IMF ratio 111



Denver Carload Member

Lot 7



Denver Carload Member

Lot 8

7 LaGrand Marathon 6109
 Bull: 15446147 • Tattoo: 6109 • Calved: 1/9/2006

O C C Kirby 633K	#+O C C Emblazon 854E	Act. BW	88
B C Marathon 7022	+O C C Blackbird 785H	Adj. WW	800
Gibbet Hill Mignonne E37	#Papa Equator 2928	Adj. YW	1419
	Gibbet Hill Mignonne TR 29	Adj. SC	39.87
		Adj. IMF	1.4
		Adj. REA	15.7

#N Bar Emulation EXT
 +LaGrand Forever Lady 4048
 +Maple Lane Forever Lady 780

#Emulation N Bar 5522
 N Bar Primrose 2424
 #A A R New Trend
 +S V F Forever Lady 1120

CED	BW	WW	YW	Milk	SC	%IMF	RE	Fat
+2	+4.1	+59	+97	+23	+06	-02	+64	+001
SW (Weaning)		SF (Feedlot)		SG (Grid)		SB (Beef)		
+27.80		+34.15		+10.72		+39.02		

Ranks in the top 1% for WW
 Ranks in the top 5% for YW, RE
 Ranks in the top 10% for %F
 Ranks in the top 15% for SW
 Dam posts ratios of WR 1@115, YR 1@109, RE 1@106
 WW ratio 115; RE ratio 106

8 LaGrand Marathon 6296
 Bull: 15446152 • Tattoo: 6296 • Calved: 1/25/2006

O C C Kirby 633K	#+O C C Emblazon 854E	Act. BW	100
B C Marathon 7022	+O C C Blackbird 785H	Adj. WW	753
Gibbet Hill Mignonne E37	#Papa Equator 2928	Adj. YW	1363
	Gibbet Hill Mignonne TR 29	Adj. SC	41.39
		Adj. IMF	2.73
		Adj. REA	13.9

+W C C Special Design L309
 +LaGrand Lena 4506
 Double G Esso Lena 047

#Bon View New Design 878
 N Bar Primrose 2424
 #Hoff Esso S C 433 (R)
 Double G Distinctive Lena

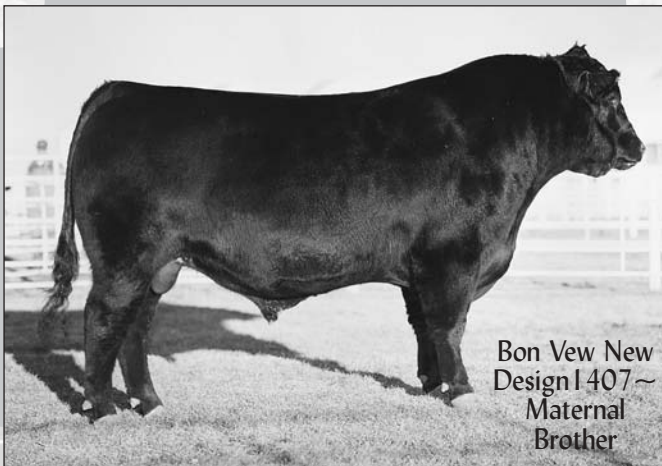
CED	BW	WW	YW	Milk	SC	%IMF	RE	Fat
-1	+4.8	+54	+87	+18	+25	+16	+37	+007
SW (Weaning)		SF (Feedlot)		SG (Grid)		SB (Beef)		
+24.17		+25.75		+15.48		+39.28		

Ranks in the top 4% for WW
 Ranks in the top 20% for YW
 Dam posts ratios of WR 1@109, YR 1@105, %IMF 1@120
 YW ratio 105; IMF ratio 120



**Denver
Carload
Member**

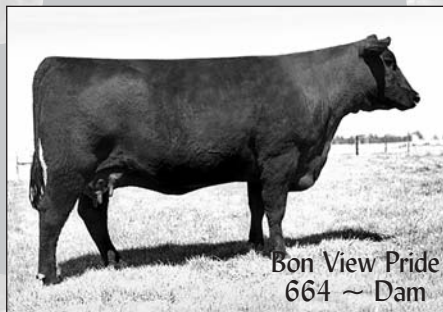
Lot 9A



Bon View New
Design 1407 ~
Maternal
Brother



LaGrand Pride
6025
~ Full Sister



Bon View Pride
664 ~ Dam

Lots 9A and 9B are maternal siblings to the total performance and carcass merit legend, Bon View New Design 1407, whose half semen interest commanded \$275,000 in the Bases Loaded Sale to Big K in Texas. Their full sister, LaGrand Pride 6025, sold at the 2007 Denim & Diamonds sale for \$12,500, going to McWilliams Ranch in Oklahoma. Maternal sisters include LaGrand Pride 4540, who sold for half interest to Southern for \$15,000 at the 2004 LaGrand fall production sale, and LaGrand Pride 4560, who sold for half interest to Southern for \$10,000 at the 2004 LaGrand fall production sale. Bon View Pride 316, another maternal sister, sold for a valuation of \$50,000 in the 2001 LaGrand fall sale. LCC Big River, a previous LaGrand herd sire, who is a maternal brother to the dam of these herd sire prospects, was the \$30,000 top-selling bull in the 2001 Leachman Cattle Company sale while his flush sister was the \$30,000 second-top-selling bred heifer of a past Bases Loaded Sale.



Lot 9B

Maternal brothers to Bon View New Design 1407 sell as Lots 9A and 9B!

O C C Kirby 633K
B C Marathon 7022
Gibbet Hill Mignonne E37

#+O C C Emblazon 854E
+O C C Blackbird 785H
#Papa Equator 2928
Gibbet Hill Mignonne TR 29

#+G A R Sleep Easy 1009
Bon View Pride 664
#Bon View Pride 1551

#Tehama Bando 155
Blacklass G A R 103
Bon View Paragon 2108
Bon View Pride 639

9A LaGrand Marathon 6019
Bull: +15446145 • Tattoo: 6019 • Calved: 1/1/2006

CED	BW	WW	YW	Milk	SC	%IMF	RE	Fat
I+8	I+7	I+47	I+82	I+20	I+.05	I+.29	I+.28	I+.001
\$W (Weaning)			\$F (Feedlot)		\$G (Grid)		\$B (Beef)	
+29.05			+23.40		+20.17		+41.62	

Ranks in the top 10% for \$W
Ranks in the top 20% for CED, BW, WW, %IMF, \$G, \$B
Dam posts ratios of BR 4@92, WR 4@104, YR 4@102, %IMF 48@108
IMF ratio: 115

9B LaGrand Marathon 6024
Bull: +15495265 • Tattoo: 6024 • Calved: 1/2/2006

CED	BW	WW	YW	Milk	SC	%IMF	RE	Fat
I+8	I+7	I+47	I+82	I+20	I-.03	I+.34	I+.34	I-.005
\$W (Weaning)			\$F (Feedlot)		\$G (Grid)		\$B (Beef)	
+29.43			+23.40		+22.84		+44.29	

Ranks in the top 10% for \$W, \$B
Ranks in the top 15% for %IMF, \$G
Ranks in the top 20% for CED, BW, WW
Dam posts ratios of BR 4@92, WR 4@104, YR 4@102, %IMF 48@108
IMF ratio 133

Act. BW	87
Adj. WW	635
Adj. YW	1286
Adj. SC	39.59
Adj. IMF	2.64
Adj. REA	14.1
Act. BW	89
Adj. WW	622
Adj. YW	1088
Adj. SC	38.55
Adj. IMF	3.91
Adj. REA	13.9



Lot 10

10 LaGrand Marathon 6163
Bull: +15446149 • Tattoo: 6163 • Calved: 1/13/2006

O C C Kirby 633K
B C Marathon 7022
Gibbet Hill Mignonne E37

#+O C C Emblazon 854E
+O C C Blackbird 785H
#Papa Equator 2928
Gibbet Hill Mignonne TR 29

#Millcreek Diversity
+LaGrand Pride Lucy 2483
+G Bar Pride Lucy 9329

#+G A R Sleep Easy 1009
Millcreek Travel Lass
#TC Dividend 963
+R A Pride Lucy 626

CED	BW	WW	YW	Milk	SC	%IMF	RE	Fat
I+3	I+3.3	I+52	I+89	I+22	I-.09	I-.02	I+1.00	I-.010
\$W (Weaning)			\$F (Feedlot)		\$G (Grid)		\$B (Beef)	
+27.14			+28.62		+15.13		+39.87	

Ranks in the top 1% for RE
Ranks in the top 10% for WW
Ranks in the top 15% for YW, Fat
Ranks in the top 20% for \$F
Dam posts ratios of WR 1@105, RE 4@118
RE ratio 129

Act. BW	82
Adj. WW	691
Adj. YW	1166
Adj. SC	36.9
Adj. IMF	2.75
Adj. REA	18.0



11 LaGrand Marathon 6285

Bull: 15495352 • Tattoo: 6285 • Calved: 1/24/2006

O C C Kirby 633K #+O C C Emblazon 854E
B C Marathon 7022 +O C C Blackbird 785H
Gibbet Hill Mignonne E37 #Papa Equator 2928
Gibbet Hill Mignonne TR 29

#+Maple Lane Forever Ready 850 #N Bar Emulation EXT
+LaGrand Katinka 4848 +S V F Forever Lady 1120
Bon View Katinka 1807 #B/R New Design 036
Bon View Katinka 764

Act. BW	74
Adj. WW	650
Adj. YW	1159
Adj. SC	40.28
Adj. IMF	4.68
Adj. REA	15.7

CED	BW	WW	YW	Milk	SC	%IMF	RE	Fat
+3	+3.0	+50	+88	+21	+22	+37	+64	+005
SW (Weaning)			SF (Feedlot)		SG (Grid)		SB (Beef)	
+25.91			+28.34		+18.96		+42.73	

Ranks in the top 5% for RE
Ranks in the top 10% for %IMF
Dam posts ratios of %IMF 1@149, RE 1@114
IMF ratio 149; RE ratio 114



12 LaGrand Marathon 6197

Bull: 15446150 • Tattoo: 6197 • Calved: 1/16/2006

O C C Kirby 633K #+O C C Emblazon 854E
B C Marathon 7022 +O C C Blackbird 785H
Gibbet Hill Mignonne E37 #Papa Equator 2928
Gibbet Hill Mignonne TR 29

#Famous 7001 #S A F Fame
+LaGrand Lass 4897 T K Karen 1369
+G A R Precision 2445 #G A R Precision 1680
G A R Pierre 2511

Act. BW	80
Adj. WW	726
Adj. YW	1259
Adj. SC	41.03
Adj. IMF	2.87
Adj. REA	18.4

CED	BW	WW	YW	Milk	SC	%IMF	RE	Fat
+6	+2.2	+53	+89	+18	+28	+07	+115	-006
SW (Weaning)			SF (Feedlot)		SG (Grid)		SB (Beef)	
+28.71			+28.21		+19.31		+44.01	

Ranks in the top 1% for RE
Ranks in the top 5% for WW
Ranks in the top 10% for SW, SB
Ranks in the top 15% for YW
Ranks in the top 20% for SF
Dam posts ratios of BR 1@94, WR 1@105, YR 1@105, RE 1@130
WW ratio 105; YW ratio 105; RE ratio 130

13 LaGrand Marathon 6015

Bull: 15495264 • Tattoo: 6015 • Calved: 12/31/2005

O C C Kirby 633K #+O C C Emblazon 854E
B C Marathon 7022 +O C C Blackbird 785H
Gibbet Hill Mignonne E37 #Papa Equator 2928
Gibbet Hill Mignonne TR 29

#Famous 7001 #S A F Fame
LaGrand Erica 4221 T K Karen 1369
+Roth Erica 1184 #+Maple Lane Forever Ready 850
D F Erica 4113

Act. BW	76
Adj. WW	625
Adj. YW	1163
Adj. SC	40.51
Adj. IMF	3.22
Adj. REA	12.7

CED	BW	WW	YW	Milk	SC	%IMF	RE	Fat
+7	+1.7	+48	+86	+18	+25	+09	+22	+010
SW (Weaning)			SF (Feedlot)		SG (Grid)		SB (Beef)	
+27.31			+27.11		+11.38		+34.98	

Ranks in the top 20% for WW, YW, SW
Dam posts ratios of BR 1@93, WR 1@100, YR 1@103, %IMF 1@103

14 LaGrand Marathon 6018

Bull: 15446144 • Tattoo: 6018 • Calved: 12/31/2005

O C C Kirby 633K #+O C C Emblazon 854E
B C Marathon 7022 +O C C Blackbird 785H
Gibbet Hill Mignonne E37 #Papa Equator 2928
Gibbet Hill Mignonne TR 29

+W C C Special Design L309 #Bon View New Design 878
LaGrand Miss Baranda 4400 N Bar Primrose 2424
Fairview Miss Baranda 6264 Fairview Stacker 1445 4088
Baranda of Fairview 1018

Act. BW	76
Adj. WW	740
Adj. YW	1263
Adj. SC	40.51
Adj. IMF	2.78
Adj. REA	14.5

CED	BW	WW	YW	Milk	SC	%IMF	RE	Fat
+9	+8	+54	+88	+19	+22	+04	+46	+022
SW (Weaning)			SF (Feedlot)		SG (Grid)		SB (Beef)	
+32.10			+26.78		+9.92		+34.15	

Ranks in the top 2% for SW
Ranks in the top 4% for WW
Ranks in the top 15% for CED, YW
Ranks in the top 20% for BW, RE
Dam posts ratios of WR 1@107, YR 1@105, RE 1@102
WW ratio 107; YW ratio 105

15 LaGrand Marathon 6031

Bull: 15495266 • Tattoo: 6031 • Calved: 1/3/2006

O C C Kirby 633K #+O C C Emblazon 854E
B C Marathon 7022 +O C C Blackbird 785H
Gibbet Hill Mignonne E37 #Papa Equator 2928
Gibbet Hill Mignonne TR 29

Hylne Right Time 338 #+Leachman Right Time
LaGrand Burgess 4056 Hylne Pride 265
+LaGrand Burgess 2834 #Papa Durabull 9805
+Partisover Burgess 810

Act. BW	84
Adj. WW	693
Adj. YW	1187
Adj. SC	37.61
Adj. IMF	3.38
Adj. REA	16.1

CED	BW	WW	YW	Milk	SC	%IMF	RE	Fat
+6	+2.2	+59	+96	+24	-10	+15	+85	+020
SW (Weaning)			SF (Feedlot)		SG (Grid)		SB (Beef)	
+32.68			+33.09		+16.71		+44.68	

Ranks in the top 1% for WW, RE, SW
Ranks in the top 5% for YW
Ranks in the top 10% for SF, SB
Ranks in the top 20% for Milk
Dam posts ratios of WR 1@111, YR 1@106, %IMF 1@108, RE 1@117
YW ratio 106; IMF ratio 108; RE ratio 117

16 LaGrand Marathon 6066

Bull: 15495273 • Tattoo: 6066 • Calved: 1/6/2006

O C C Kirby 633K #+O C C Emblazon 854E
B C Marathon 7022 +O C C Blackbird 785H
Gibbet Hill Mignonne E37 #Papa Equator 2928
Gibbet Hill Mignonne TR 29

#Famous 7001 #S A F Fame
+LaGrand Lass 4987 T K Karen 1369
+G A R Precision 2445 #G A R Precision 1680
G A R Pierre 2511

Act. BW	87
Adj. WW	694
Adj. YW	1236
Adj. SC	40.71
Adj. IMF	2.8
Adj. REA	15.4

CED	BW	WW	YW	Milk	SC	%IMF	RE	Fat
+2	+3.3	+51	+87	+18	+25	+08	+75	-018
SW (Weaning)			SF (Feedlot)		SG (Grid)		SB (Beef)	
+25.62			+26.95		+18.28		+42.21	

Ranks in the top 2% for RE
Ranks in the top 5% for Fat
Ranks in the top 10% for WW
Ranks in the top 15% for SB
Ranks in the top 20% for YW
Dam posts ratios of WW 1@100, YR 1@102, RE 1@108
RE ratio 108

17 LaGrand Marathon 6086

Bull: +15495283 • Tattoo: 6086 • Calved: 1/7/2006

O C C Kirby 633K
B C Marathon 7022
Gibbet Hill Mignonne E37

#+O C C Emblazon 854E
+O C C Blackbird 785H
#Papa Equator 2928
Gibbet Hill Mignonne TR 29

#S S Traveler 6807 T510
+Maple Lane Forever Lady 277
+S V F Forever Lady 1120

#D H D Traveler 6807
#S S Miss Hi Spade A114
#+Skarship Saratoga
#Forever Lady 163 G D A R

Act. BW	74
Adj. WW	647
Adj. YW	1122
Adj. SC	35.71
Adj. IMF	2.68
Adj. REA	14.1

CED	BW	WW	YW	Milk	SC	%IMF	RE	Fat
+6	+1.8	+4.9	+8.8	+1.8	-1.24	+0.9	+3.9	+0.07
\$W (Weaning)		\$F (Feedlot)		\$G (Grid)		\$B (Beef)		
+27.11		+28.78		+13.06		+37.50		

Ranks in the top 15% for WW, YW
Ranks in the top 20% for \$W

18 LaGrand Marathon 6088

Bull: 15495284 • Tattoo: 6088 • Calved: 1/7/2006

O C C Kirby 633K
B C Marathon 7022
Gibbet Hill Mignonne E37

#+O C C Emblazon 854E
+O C C Blackbird 785H
#Papa Equator 2928
Gibbet Hill Mignonne TR 29

+W C C Precision E161 J239
LaGrand Empress 4344
+LaGrand Empress 2584

#Twin Valley Precision E161 (FR)
N Bar Primrose 2424
#Bon View New Design 1407
D F Empress 4286

Act. BW	87
Adj. WW	627
Adj. YW	1121
Adj. SC	38.74
Adj. IMF	4.76
Adj. REA	16.2

CED	BW	WW	YW	Milk	SC	%IMF	RE	Fat
+3	+3.6	+4.4	+8.0	+1.8	+1.01	+1.42	+1.80	+1.001
\$W (Weaning)		\$F (Feedlot)		\$G (Grid)		\$B (Beef)		
+22.28		+22.54		+27.94		+48.22		

Ranks in the top 1% for RE
Ranks in the top 2% for \$G
Ranks in the top 4% for \$B
Ranks in the top 10% for %IMF
Dan posts ratios of %IMF 1@148, RE 1@114
IMF ratio 148; RE ratio 114

19 LaGrand Marathon 6806

Bull: 15495479 • Tattoo: 6806 • Calved: 1/8/2006

O C C Kirby 633K
B C Marathon 7022
Gibbet Hill Mignonne E37

#+O C C Emblazon 854E
+O C C Blackbird 785H
#Papa Equator 2928
Gibbet Hill Mignonne TR 29

#M R Prec 14
Rally Blackbird 761
Rally Blackbird 747

#V D A R New Trend 700
#K M R Blackcap 1029
#Finks 5522-6148
Summitcrest Blackbird 183Z

Act. BW	96
Adj. WW	706
Adj. YW	1053
Adj. SC	39.8
Adj. IMF	2.12
Adj. REA	12.5

CED	BW	WW	YW	Milk	SC	%IMF	RE	Fat
+4	+2.8	+5.0	+8.0	+1.6	+1.07	+1.47	+1.47	+1.0
\$W (Weaning)		\$F (Feedlot)		\$G (Grid)		\$B (Beef)		
+26.85		+20.18		+14.73		+34.80		

Ranks in the top 10% for WW
Ranks in the top 15% for RE
Dam posts ratios of WW 3@108, YR 3@103, RE 3@100
WW ratio 108

20 LaGrand Marathon 6097

Bull: 15495288 • Tattoo: 6097 • Calved: 1/8/2006

O C C Kirby 633K
B C Marathon 7022
Gibbet Hill Mignonne E37

#+O C C Emblazon 854E
+O C C Blackbird 785H
#Papa Equator 2928
Gibbet Hill Mignonne TR 29

#+Maple Lane Forever Ready 850
+Roth Erica 1184
D F Erica 4113

#N Bar Emulation EXT
+S V F Forever Lady 1120
#G D A R Traveler 71
D F Erica 1112

Act. BW	82
Adj. WW	664
Adj. YW	1211
Adj. SC	38.77
Adj. IMF	3.38
Adj. REA	15.5

CED	BW	WW	YW	Milk	SC	%IMF	RE	Fat
+7	+1.2	+4.6	+8.5	+1.8	-1.07	+0.9	+3.5	+0.037
\$W (Weaning)		\$F (Feedlot)		\$G (Grid)		\$B (Beef)		
+26.95		+26.88		+8.97		+31.92		

Dam posts a ratio of RE 3@101
IMF ratio 105; RE ratio 109

21 LaGrand Marathon 6102

Bull: 15495290 • Tattoo: 6102 • Calved: 1/8/2006

O C C Kirby 633K
B C Marathon 7022
Gibbet Hill Mignonne E37

#+O C C Emblazon 854E
+O C C Blackbird 785H
#Papa Equator 2928
Gibbet Hill Mignonne TR 29

Hyline Right Time 338
+LaGrand Miss Traveler 4966
+ALC Miss Traveler 15H

#+Leachman Right Time
Hyline Pride 265
#+Gdar SVF Russ 184B
+Alc Miss Traveler 102G

Act. BW	80
Adj. WW	658
Adj. YW	1207
Adj. SC	42.77
Adj. IMF	2.41
Adj. REA	14.7

CED	BW	WW	YW	Milk	SC	%IMF	RE	Fat
+6	+2.5	+5.6	+9.8	+2.2	+1.52	+1.05	+1.63	+1.002
\$W (Weaning)		\$F (Feedlot)		\$G (Grid)		\$B (Beef)		
+28.94		+36.43		+13.25		+42.01		

Ranks in the top 2% for WW
Ranks in the top 4% for YW
Ranks in the top 5% for RE
Ranks in the top 10% for \$W, \$F
Ranks in the top 15% for \$B
Dam posts ratios of WR 1@106, YR 1@108, RE 1@107
YW ratio 108; RE ratio 107

22 LaGrand Marathon 6113

Bull: +15495295 • Tattoo: 6113 • Calved: 1/9/2006

O C C Kirby 633K
B C Marathon 7022
Gibbet Hill Mignonne E37

#+O C C Emblazon 854E
+O C C Blackbird 785H
#Papa Equator 2928
Gibbet Hill Mignonne TR 29

#Bon View Bando 598
+FV Everelda Entense 1494
+Sitz Everelda Entense 2636

#Tehama Bando 155
#Bon View Dora 56
#Traveler 124 G D A R
Sitz Everelda Entense 1137

Act. BW	76
Adj. WW	661
Adj. YW	1213
Adj. SC	38.78
Adj. IMF	3.31
Adj. REA	13.4

CED	BW	WW	YW	Milk	SC	%IMF	RE	Fat
+5	+2.3	+5.0	+8.4	+2.2	+1.26	+1.14	+1.31	-1.004
\$W (Weaning)		\$F (Feedlot)		\$G (Grid)		\$B (Beef)		
+28.99		+24.26		+15.96		+38.28		

Ranks in the top 10% for WW, \$W
Dam posts ratios of BR 2@96, WR 2@1009, YR 1@111
IMF ratio 113

23 LaGrand Marathon 6105

Bull: 15495293 • Tattoo: 6105 • Calved: 1/9/2006

O C C Kirby 633K
B C Marathon 7022
Gibbet Hill Mignonne E37

#+O C C Emblazon 854E
+O C C Blackbird 785H
#Papa Equator 2928
Gibbet Hill Mignonne TR 29

#Famous 7001
LaGrand Barbara 3487
+Roth Barbara 0434

#S A F Fame
T K Karen 1369
#J L B Exacto 416
Gibb Barbara 3317

Act. BW	102
Adj. WW	678
Adj. YW	1196
Adj. SC	39.8
Adj. IMF	2.66
Adj. REA	13.7

CED	BW	WW	YW	Milk	SC	%IMF	RE	Fat
-3	+5.4	+4.8	+8.3	+1.9	+1.14	-1.02	+1.45	-1.028
\$W (Weaning)		\$F (Feedlot)		\$G (Grid)		\$B (Beef)		
+20.48		+24.02		+13.62		+35.53		

Ranks in the top 1% for Fat
Ranks in the top 20% for WW, RE
Dam posts ratios of WR 2@101, YR 2@100

24 LaGrand Marathon 6126

Bull: 15495302 • Tattoo: 6126 • Calved: 1/10/2006

O C C Kirby 633K
B C Marathon 7022
Gibbet Hill Mignonne E37

#+O C C Emblazon 854E
+O C C Blackbird 785H
#Papa Equator 2928
Gibbet Hill Mignonne TR 29

Summitcrest High Prime 0H29
+Mel Acres Blackbird 45
Blackbird T L 045

#Gardens Prime Time
Summitcrest Missie 2F55
#Papa Universe 515
Blackbird T L 71

Act. BW	88
Adj. WW	638
Adj. YW	1161
Adj. SC	38.83
Adj. IMF	3.0
Adj. REA	13.2

CED	BW	WW	YW	Milk	SC	%IMF	RE	Fat
+0	+3.5	+4.6	+7.9	+1.9	+1.02	+1.04	+1.28	+1.003
\$W (Weaning)		\$F (Feedlot)		\$G (Grid)		\$B (Beef)		
+24.50		+20.73		+11.73		+31.40		

25 LaGrand Marathon 6263

Bull: 15495340 • Tattoo: 6263 • Calved: 1/22/2006

O C C Kirby 633K #+0 C C Emblazon 854E
B C Marathon 7022 +O C C Blackbird 785H
Gibbet Hill Mignonne E37 #Papa Equator 2928
Gibbet Hill Mignonne TR 29

+W C C Precision E161 J239 #Twin Valley Precision E161 (FR)
LaGrand Wendy 4378 N Bar Primrose 2424
+Roth Wendy 2611 #B/R New Design 323
+Double Bar Wendy 508-0100

Act. BW	88
Adj. WW	650
Adj. YW	1218
Adj. SC	38.72
Adj. IMF	2.96
Adj. REA	13.8

CED	BW	WW	YW	Milk	SC	%IMF	RE	Fat
+0	+4.6	+52	+94	+21	+0.03	+0.17	+0.54	+0.004
\$W (Weaning)			\$F (Feedlot)	SG (Grid)		\$B (Beef)		
+22.79			+33.84	+16.91		+44.20		

Ranks in top 10% for WW, YW, RE, \$F, \$B
Dam posts ratios of WR 1@104, YR 1@108, RE 1@100
YW ratio 108

26 LaGrand Marathon 6327

Bull: 15495362 • Tattoo: 6327 • Calved: 1/28/2006

O C C Kirby 633K #+0 C C Emblazon 854E
B C Marathon 7022 +O C C Blackbird 785H
Gibbet Hill Mignonne E37 #Papa Equator 2928
Gibbet Hill Mignonne TR 29

Whitstone Precision H141 #G A R Precision 1680
+LaGrand Wendy 4012 +Rita 3X11 of Rita 0FB4 Ext
+Broken Arrow Wendy 038 #+Gdar SVF Russ 184B
H R Wendy 618

Act. BW	88
Adj. WW	653
Adj. YW	1157
Adj. SC	38.91
Adj. IMF	3.11
Adj. REA	14.2

CED	BW	WW	YW	Milk	SC	%IMF	RE	Fat
+3	+3.3	+55	+94	+18	+0.05	+0.05	+0.65	+0.010
\$W (Weaning)			\$F (Feedlot)	SG (Grid)		\$B (Beef)		
+26.57			+32.62	+12.87		+40.01		

Ranks in the top 3% for WW
Ranks in the top 4% for RE
Ranks in the top 10% for YW
Ranks in the top 15% for \$F
Dam posts ratios of WR 1@105, YR 1@103, RE 1@103
WW ratio 105

27 LaGrand Marathon 6350

Bull: 15495367 • Tattoo: 6350 • Calved: 1/29/2006

O C C Kirby 633K #+0 C C Emblazon 854E
B C Marathon 7022 +O C C Blackbird 785H
Gibbet Hill Mignonne E37 #Papa Equator 2928
Gibbet Hill Mignonne TR 29

#N Bar Emulation EXT #Emulation N Bar 5522
+LaGrand Forever Lady 4035 N Bar Primrose 2424
+Maple Lane Forever Lady 780 #A A R New Trend
+S V F Forever Lady 1120

Act. BW	84
Adj. WW	689
Adj. YW	1102
Adj. SC	39.44
Adj. IMF	4.01
Adj. REA	15.8

CED	BW	WW	YW	Milk	SC	%IMF	RE	Fat
+3	+3.5	+51	+83	+21	+0.09	+0.18	+0.61	+0.008
\$W (Weaning)			\$F (Feedlot)	SG (Grid)		\$B (Beef)		
+27.34			+22.84	+18.41		+40.20		

Ranks in the top 10% for WW, RE
Dam posts ratios of BR 1@99, %IMF 1@125, RE 1@111
IMF ratio 125; RE ratio 111

28 LaGrand Marathon 6660

Bull: 15495452 • Tattoo: 6660 • Calved: 4/4/2006

O C C Kirby 633K #+0 C C Emblazon 854E
B C Marathon 7022 +O C C Blackbird 785H
Gibbet Hill Mignonne E37 #Papa Equator 2928
Gibbet Hill Mignonne TR 29

#O C C Precision E161 J239 #Rito 054 G D A R
+Double Bar Wendy 508-0100 #Blackbird of C H 7009
K W H Wendy 508 Hyline Oscar 275
S A F Wendy 6034

Act. BW	88
Adj. WW	650
Adj. YW	1218
Adj. SC	38.72
Adj. IMF	2.96
Adj. REA	13.8

CED	BW	WW	YW	Milk	SC	%IMF	RE	Fat
+1	+3.7	+54	+88	+25	+0.01	+0.05	+0.34	+0.004
\$W (Weaning)			\$F (Feedlot)	SG (Grid)		\$B (Beef)		
+28.26			+26.78	+12.59		+36.82		

Ranks in the top 4% for WW
Ranks in the top 15% for YW, Milk
Dam posts ratios of RB 4@94, WR 5@114, YR 3@108, %IMF 52@100

FOR REFERENCE ONLY

B C Marathon 7022

Sire of Lots 1-28 and 275-277



Marathon is moderate framed with lots of thickness and volume. His calves are very stylish. This bull has some impressive growth and RE EPDs.

FOR REFERENCE ONLY

Gibbet Hill Mignonne E37

Paternal granddam of Lots 1-28 and 275-277



Dam of B C Marathon 7022

OUT OF SALE

28 LaGrand Marathon 6660

Bull: 15495452 • Tattoo: 6660 • Calved: 4/4/2006

O C C Kirby 633K #+0 C C Emblazon 854E
B C Marathon 7022 +O C C Blackbird 785H
Gibbet Hill Mignonne E37 #Papa Equator 2928
Gibbet Hill Mignonne TR 29

#O C C Precision E161 J239 #Rito 054 G D A R
+Double Bar Wendy 508-0100 #Blackbird of C H 7009
K W H Wendy 508 Hyline Oscar 275
S A F Wendy 6034

Act. BW	88
Adj. WW	650
Adj. YW	1218
Adj. SC	38.72
Adj. IMF	2.96
Adj. REA	13.8

CED	BW	WW	YW	Milk	SC	%IMF	RE	Fat
+1	+3.7	+54	+88	+25	+0.01	+0.05	+0.34	+0.004
\$W (Weaning)			\$F (Feedlot)	SG (Grid)		\$B (Beef)		
+28.26			+26.78	+12.59		+36.82		

Ranks in the top 4% for WW
Ranks in the top 15% for YW, Milk
Dam posts ratios of RB 4@94, WR 5@114, YR 3@108, %IMF 52@100

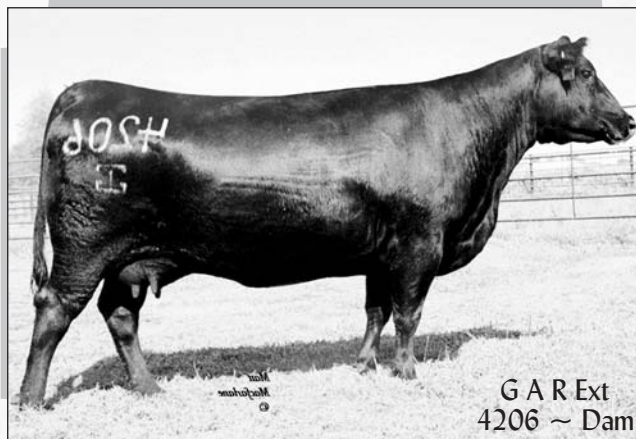
LaGrand

ANGUS & HEREFORD RANCH

Bulls will be guaranteed and performance tested with free delivery.



GAR Predestined
~ Full Brother



G A R Ext
4206 ~ Dam



Lot 29B

29A BAAR USA New Design 5226

Bull: +15413164 • Tattoo: 5226 • Calved: 9/26/2005

CED	BW	WW	YW	Milk	SC	%IMF	RE	Fat
I+6	I+2.9	I+40	I+79	I+20	+08	+47	+33	+032
SW (Weaning)		SF (Feedlot)		SG (Grid)		SB (Beef)		
+24.33		+23.10		+22.74		+42.78		

IMF ratio 127

29B BAAR USA New Design 5229

Bull: +15413166 • Tattoo: 5229 • Calved: 9/27/2005

CED	BW	WW	YW	Milk	SC	%IMF	RE	Fat
I+6	I+2.9	I+40	I+79	I+20	+64	+41	+27	+029
SW (Weaning)		SF (Feedlot)		SG (Grid)		SB (Beef)		
+24.33		+23.10		+21.18		+41.21		

IMF ratio 127

29C BAAR USA New Design 5231

Bull: +15413168 • Tattoo: 5231 • Calved: 9/28/2005

CED	BW	WW	YW	Milk	SC	%IMF	RE	Fat
I+6	I+2.9	I+40	I+79	I+20	+52	+43	+49	+037
SW (Weaning)		SF (Feedlot)		SG (Grid)		SB (Beef)		
+24.33		+23.10		+22.48		+42.52		

IMF ratio 106; RE ratio 109

29D BAAR USA New Design 5232

Bull: +15413169 • Tattoo: 5232 • Calved: 9/28/2005

CED	BW	WW	YW	Milk	SC	%IMF	RE	Fat
I+6	I+2.9	I+40	I+79	I+20	+23	+48	+24	+026
SW (Weaning)		SF (Feedlot)		SG (Grid)		SB (Beef)		
+24.33		+23.10		+22.95		+42.99		

IMF ratio 134



Lot 29C



Lot 29D

#V D A R New Trend 315
#B/R New Design 036
B/R Blackcap Empress 76

#A A R New Trend
#V D A R Lucy 704
#K&K Top Gun
+QLC A70 Blkcp Empress E43T

#N Bar Emulation EXT
#+G A R Ext 4206
+G A R 6807 Traveler 1432

#Emulation N Bar 5522
N Bar Primrose 2424
#D H D Traveler 6807
#G A R 9J9 57

A special feature for this year's sale are these four full brother to GAR Predestined the #1 \$ Beef and #5 IMF bull while still ranking in the top 2% for REA. Predestined is the multi-trait leader who offers the industry the most economic importance. The dam of GAR Predestined and these four brothers, GAR EXT 4206, is the \$400,000 former donor of Broken Arrow. She has proven herself as a true transmitter of IMF with 15 progeny at an average IMF ratio of 122 and 15 progeny with REA ratio of 102. Full sisters to these bulls include: EXAR Miss EXT 2525, the \$125,000 high-selling lot at 2006 EXAR sale selected by KCS Angus Ranch; and EXAR New Design 5035, the \$86,000 fourth-high-selling lot at 2006 EXAR sale, selling to Pine Ridge Angus and Cool Spring Plantation. A maternal sister to these four bulls includes RF Pinnacle 0223, the No. 13 IMF proven dam and the \$80,000 second high valued donor in the 2006 Prospect Hill Farm sale. These four brothers to Predestined have the elements necessary to become breed leaders in their own right.

Act. Bw
71
Adj. WW
668
Adj. YW
1108
Adj. SC

Adj. IMF
3.8
Adj. REA
13.0

Act. Bw
73
Adj. WW
679
Adj. YW
1100
Adj. SC

Adj. IMF
3.07
Adj. REA
12.5

Act. Bw
79
Adj. WW
685
Adj. YW
1114
Adj. SC

Adj. IMF
3.16
Adj. REA
14.5

Act. Bw
81
Adj. WW
727
Adj. YW
1103
Adj. SC

Adj. IMF
4.0
Adj. REA
12.1



**Denver
Carload
Member**
Lot 30

30 LaGrand Special Design 6274

Bull: 15434516 • Tattoo: 6274 • Calved: 1/23/2006

#Bon View New Design 878
+W C C Special Design L309
N Bar Primrose 2424

#B/R New Design 036
Bon View Gammer 85
#Emulation 31 (FX)
Primrose N Bar 9962

#C A Future Direction 5321
La Grand Blackbird 2432
Roth Blackbird 1133

#G A R Precision 1680
C A Miss Power Fix 308
#Famous 7001
Patton Blackbird 804 Y A F

Act. Bw	78
Adj. WW	791
Adj. YW	1417
Adj. SC	41.82
Adj. IMF	3.65
Adj. REA	15.2

CED	BW	WW	YW	Milk	SC	%IMF	RE	Fat
+10	+1.5	+61	I+102	+28	I+29	I+42	I+32	I+036
\$W (Weaning)		\$F (Feedlot)		\$G (Grid)		\$B (Beef)		
+34.22		+38.63		+18.82		+48.61		

Ranks in the top 1% for WW, \$W
Ranks in the top 2% for YW
Ranks in the top 3% for \$B
Ranks in the top 4% for \$F
Ranks in the top 5% for Milk
Ranks in the top 10% for CED, CEM, %IMF
Dam posts ratios of WR 2@110, YR 2@103, %IMF 2@137, RE 2@101
WW ratio 114; YW ratio 109; IMF ratio 160



Lot 31



Lot 32

31 LaGrand Special Design 6179

Bull: 15495317 • Tattoo: 6179 • Calved: 1/14/2006

#Bon View New Design 878
+W C C Special Design L309
N Bar Primrose 2424

#B/R New Design 036
Bon View Gammer 85
#Emulation 31 (FX)
Primrose N Bar 9962

#Famous 7001
Roth Pride Lady 2079
Roth Pride Lady 078

#S A F Fame
T K Karen 1369
#Basin Max 602C
#Stevenson Pride Lady 6368

Act. Bw	84
Adj. WW	731
Adj. YW	1240
Adj. SC	41.12
Adj. IMF	3.03
Adj. REA	14.2

CED	BW	WW	YW	Milk	SC	%IMF	RE	Fat
+8	+2.4	+52	I+93	+21	I+29	I+06	I+06	I+026
\$W (Weaning)		\$F (Feedlot)		\$G (Grid)		\$B (Beef)		
+27.48		+32.79		+8.56		+34.72		

Ranks in the top 10% for WW, YW, \$F
Ranks in the top 20% for CED, SW
Dam posts ratios of BR 3@90, RE 2@101
WW ratio 105

32 LaGrand Special Design 6265

Bull: 15495341 • Tattoo: 6265 • Calved: 1/22/2006

#Bon View New Design 878
+W C C Special Design L309
N Bar Primrose 2424

#B/R New Design 036
Bon View Gammer 85
#Emulation 31 (FX)
Primrose N Bar 9962

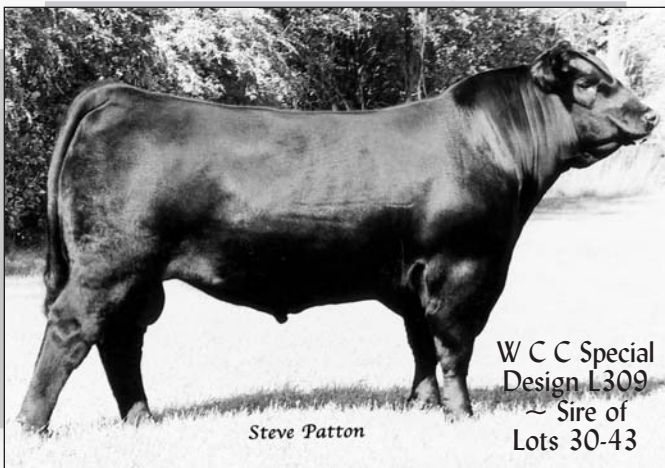
#Famous 7001
LaGrand Blackette Lady 3424
G D A R Blackette Lady 034

#S A F Fame
T K Karen 1369
#+Partisover Warrior 369
G D A R Blackette Lady 8141

Act. Bw	88
Adj. WW	719
Adj. YW	1252
Adj. SC	38.72
Adj. IMF	3.44
Adj. REA	13.5

CED	BW	WW	YW	Milk	SC	%IMF	RE	Fat
+4	+3.6	+49	I+88	+21	I+0	I+11	I+12	I-003
\$W (Weaning)		\$F (Feedlot)		\$G (Grid)		\$B (Beef)		
+24.28		+28.78		+14.30		+38.34		

Ranks in the top 15% for WW, YW
Ranks in the top 20% for \$F
Dam posts ratios of WR 2@100, YR 2@102, %IMF 2@115, RE 2@107
IMF ratio 107



36 LaGrand Special Design 6210

Bull: 15495329 • Tattoo: 6210 • Calved: 1/17/2006

#Bon View New Design 878 #B/R New Design 036
+W C C Special Design L309 Bon View Gammer 85
N Bar Primrose 2424 #Emulation 31 (FX)
Primrose N Bar 9962

#Leachman Explorer #N Bar Emulation EXT
+Sun Royal Lass 006 Leachman Blackcap 9006
+Leachman Royal Lass 613L #+Brost Power Drive
Leachman Lass 1004

Act. BW	72
Adj. WW	556
Adj. YW	1039
Adj. SC	37.03
Adj. IMF	3.19
Adj. REA	13.6

CED	BW	WW	YW	Milk	SC	%IMF	RE	Fat
+12	+8	+46	+79	+18	-1.18	+0.09	+0.02	+0.018
SW (Weaning)			SF (Feedlot)		SG (Grid)		SB (Beef)	
+28.49			+20.73		+10.99		+30.58	

Ranks in the top 2% for CED
Ranks in the top 10% for \$W
Dam posts ratios for BR 5@91, %IMF 3@110

37 LaGrand Special Design 6820

Bull: 15495481 • Tattoo: 6820 • Calved: 1/19/2006

#Bon View New Design 878 #B/R New Design 036
+W C C Special Design L309 Bon View Gammer 85
N Bar Primrose 2424 #Emulation 31 (FX)
Primrose N Bar 9962

#+Leachman Right Time #N Bar Emulation EXT
+North Fork Erica 18 Leachman Erica 0025
Erica 4210 B C B R #O C C Maternal Trend 725Y
Erica 882 B C B R

Act. BW	103
Adj. WW	672
Adj. YW	1229
Adj. SC	37.60
Adj. IMF	2.75
Adj. REA	13.7

CED	BW	WW	YW	Milk	SC	%IMF	RE	Fat
+2	+4.3	+51	+93	+23	+0.08	+0.14	+0.15	+0.016
SW (Weaning)			SF (Feedlot)		SG (Grid)		SB (Beef)	
+23.45			+33.20		+12.10		+38.14	

Ranks in the top 10% for WW, YW, \$F
Dam posts ratios of YR 3@102, %IMF 3@118, RE 2@107
YW ratio 111

38 LaGrand Special Design 6247

Bull: 15495336 • Tattoo: 6247 • Calved: 1/20/2006

#Bon View New Design 878 #B/R New Design 036
+W C C Special Design L309 Bon View Gammer 85
N Bar Primrose 2424 #Emulation 31 (FX)
Primrose N Bar 9962

#+Gdar SVF Russ 184B #G D A R Executive 727
+Roth Black Lass 0381 +G D A R Forever Lady 719
+V A R Black Lass 5222 #+G A R Sleep Easy 1009
Leachman Lass 1004

Act. BW	98
Adj. WW	698
Adj. YW	1159
Adj. SC	36.16
Adj. IMF	2.66
Adj. REA	14.9

CED	BW	WW	YW	Milk	SC	%IMF	RE	Fat
+3	+4.4	+48	+81	+23	-1.31	+0.01	+0.16	+0.002
SW (Weaning)			SF (Feedlot)		SG (Grid)		SB (Beef)	
+24.21			+21.98		+10.59		+31.04	

Dam posts a ratio of 3@102
RE ratio 105

39 LaGrand Special Design 6916

Bull: +15626683 • Tattoo: 6916 • Calved: 1/25/2006

#Bon View New Design 878 #B/R New Design 036
+W C C Special Design L309 Bon View Gammer 85
N Bar Primrose 2424 #Emulation 31 (FX)
Primrose N Bar 9962

#+Rito 9FB3 of 5H11 Fullback #Leachman Fullback
Skyway Hills Rose 9FB3 Rita 5H11 of 1B14 Rito 9J9
+Skyway Hills Rose 6807 #D H D Traveler 6807
Skyway Hills Rose 149

Act. BW	100
Adj. WW	695
Adj. YW	1164
Adj. SC	39.29
Adj. IMF	3.16
Adj. REA	13.6

CED	BW	WW	YW	Milk	SC	%IMF	RE	Fat
+5	+3.3	+53	+92	+27	+0.02	+0	+0.17	+0.010
SW (Weaning)			SF (Feedlot)		SG (Grid)		SB (Beef)	
+28.21			+31.34		+8.38		+34.00	

Ranks in the top 5% for WW
Ranks in the top 10% for YW, Milk
Ranks in the top 15% for \$W, \$F

33 LaGrand Special Design 6037

Bull: 15434511 • Tattoo: 6037 • Calved: 1/3/2006

#Bon View New Design 878 #B/R New Design 036
+W C C Special Design L309 Bon View Gammer 85
N Bar Primrose 2424 #Emulation 31 (FX)
Primrose N Bar 9962

#+Leachman Explorer #B/R New Design 036
+LaGrand Queen Elba 4849 N Bar Primrose 2424
#Monitt Queen Elba L04F #TC Queen 963
#M A F Queen Elba L14D

Act. BW	91
Adj. WW	825
Adj. YW	1229
Adj. SC	37.03
Adj. IMF	3.19
Adj. REA	13.6

CED	BW	WW	YW	Milk	SC	%IMF	RE	Fat
+4	+3.9	+62	+105	+29	+0.17	+0.10	+0.009	
SW (Weaning)			SF (Feedlot)		SG (Grid)		SB (Beef)	
+29.32			+41.42		+17.26		+44.76	

Ranks in the top 1% for WW, YW
Ranks in the top 2% for \$F
Ranks in the top 3% for Milk
Ranks in the top 10% for \$W, \$B
Dam posts a ratio of WR 1@119
WW ratio 119

34 LaGrand Special Design 6189

Bull: 15495322 • Tattoo: 6189 • Calved: 1/15/2006

#Bon View New Design 878 #B/R New Design 036
+W C C Special Design L309 Bon View Gammer 85
N Bar Primrose 2424 #Emulation 31 (FX)
Primrose N Bar 9962

S/C Sleep Easy E369 #+G A R Sleep Easy 1009
Summitcrest Missie 4L61 Summitcrest Blackbird A308
Summitcrest Missie 2F55 #Finks 5522-6148
#Summitcrest Missie 1C24

Act. BW	102
Adj. WW	802
Adj. YW	1282
Adj. SC	42.0
Adj. IMF	2.92
Adj. REA	11.7

CED	BW	WW	YW	Milk	SC	%IMF	RE	Fat
-2	+4.8	+58	+96	+25	+0.39	+0.09	+0.05	+0.001
SW (Weaning)			SF (Feedlot)		SG (Grid)		SB (Beef)	
+26.26			+33.50		+11.89		+39.20	

Ranks in the top 2% for WW
Ranks in the top 5% for YW
Ranks in the top 10% for \$F
Ranks in the top 15% for Milk
Dam posts ratios of WR 3@108, YR 3@106
WW ratio 116; YW ratio 106

35 LaGrand Special Design 6181

Bull: 15495319 • Tattoo: 6181 • Calved: 1/15/2006

#Bon View New Design 878 #B/R New Design 036
+W C C Special Design L309 Bon View Gammer 85
N Bar Primrose 2424 #Emulation 31 (FX)
Primrose N Bar 9962

#A A R New Trend #V D A R Shoshone 548
+Broken Arrow Forever Lady 04 Donna A A R 74
+S V F Forever Lady 0400 #+Skarship Saratoga
#Forever Lady 163 G D A R

Act. BW	90
Adj. WW	583
Adj. YW	1116
Adj. SC	39.97
Adj. IMF	6.02
Adj. REA	13.4

CED	BW	WW	YW	Milk	SC	%IMF	RE	Fat
+4	+3.9	+44	+84	+21	+0.38	+0.27	+0.13	+0.007
SW (Weaning)			SF (Feedlot)		SG (Grid)		SB (Beef)	
+21.56			+26.65		+17.72		+39.77	

Ranks in the top 20% for %IMF
Dam posts ratios of %IMF 4@107, RE 4@103
IMF ratio 192

40 LaGrand Special Design 628 I

Bull: 15495349 • Tattoo: 6281 • Calved: 1/26/2006

#Bon View New Design 878 #B/R New Design 036
+W C C Special Design L309 Bon View Gammer 85
N Bar Primrose 2424 #Emulation 31 (FX)
Primrose N Bar 9962

#Sitz Traveler 9929 #D H D Traveler 6807
+North Fork Forever 1062 Sitz Everelda Entense 1137
+Jolly R Forever 141E #V D A R New Trend 315
+Jolly R Forever Z008

Act. BW	72
Adj. WW	636
Adj. YW	1102
Adj. SC	38.35
Adj. IMF	2.75
Adj. REA	13.1

CED	BW	WW	YW	Milk	SC	%IMF	RE	Fat
+11	+1.1	+43	+77	+23	+1.18	+0.02	+0.07	+0.23
\$W (Weaning)		\$F (Feedlot)		\$G (Grid)		\$B (Beef)		
+28.42		+19.88		+9.11		+27.78		

Ranks in the top 3% for CEM
Ranks in the top 4% for CED
Ranks in the top 15% for \$W
Dam posts a ratio of RE 4@103

42 LaGrand Special Design 6835

Bull: 15495486 • Tattoo: 6835 • Calved: 1/28/2006

#Bon View New Design 878 #B/R New Design 036
+W C C Special Design L309 Bon View Gammer 85
N Bar Primrose 2424 #Emulation 31 (FX)
Primrose N Bar 9962

#R P 3RD Bushwacker #B C C Bushwacker 41-93
#Roth Barbara 2006 L B Queen of Spades
+Roth Barbara 0432 #J L B Exacto 416
Gibb Barbara 3317

Act. BW	106
Adj. WW	705
Adj. YW	1134
Adj. SC	38.57
Adj. IMF	2.74
Adj. REA	12.4

CED	BW	WW	YW	Milk	SC	%IMF	RE	Fat
-1	+5.1	+54	+92	+27	+1.01	+0.03	+0.07	-1.001
\$W (Weaning)		\$F (Feedlot)		\$G (Grid)		\$B (Beef)		
+24.56		+30.93		+11.40		+37.22		

Ranks in the top 4% for WW
Ranks in the top 10% for YW, Milk
Ranks in the top 15% for SF
Dam posts ratios of WR 3@108, YR 3@105 and RE 3@101
WW ratio 108

41 LaGrand Special Design 632 I

Bull: 15495359 • Tattoo: 6321 • Calved: 1/27/2006

#Bon View New Design 878 #B/R New Design 036
+W C C Special Design L309 Bon View Gammer 85
N Bar Primrose 2424 #Emulation 31 (FX)
Primrose N Bar 9962

#C A Future Direction 5321 #G A R Precision 1680
+LaGrand Lady 3706 C A Miss Power Fix 308
Donamere Lady 2743 #Krugerrand of Donamere 490
Donamere Lady 209

Act. BW	68
Adj. WW	551
Adj. YW	1045
Adj. SC	37.38
Adj. IMF	2.98
Adj. REA	13.6

CED	BW	WW	YW	Milk	SC	%IMF	RE	Fat
+12	+1	+43	+81	+25	+1.26	+0.12	+0.26	+0.12
\$W (Weaning)		\$F (Feedlot)		\$G (Grid)		\$B (Beef)		
+28.66		+23.96		+15.26		+36.30		

Ranks in the top 2% for CED
Ranks in the top 10% for BW, CEM, \$W
Ranks in the top 15% for Milk
Dam posts of ratio of BR 2@87

43 LaGrand Special Design 6425

Bull: 15495391 • Tattoo: 6425 • Calved: 2/8/2006

#Bon View New Design 878 #B/R New Design 036
+W C C Special Design L309 Bon View Gammer 85
N Bar Primrose 2424 #Emulation 31 (FX)
Primrose N Bar 9962

#+S A F 598 Bando 5175 #Bon View Bando 598
+LaGrand Miss Bando 3726 +S A F Royal Lass 1002
+G A R 6807 Traveler 529 #D H D Traveler 6807
+G A R Tonto 111

Act. BW	82
Adj. WW	704
Adj. YW	1178
Adj. SC	41.76
Adj. IMF	3.18
Adj. REA	15.0

CED	BW	WW	YW	Milk	SC	%IMF	RE	Fat
+8	+2.7	+60	+100	+25	+1.39	+0.07	+0.27	+0.16
\$W (Weaning)		\$F (Feedlot)		\$G (Grid)		\$B (Beef)		
+31.12		+36.91		+10.91		+38.54		

Ranks in the top 1% for WW
Ranks in the top 3% for YW, \$W
Ranks in the top 5% for SF
Ranks in the top 20% for CED
Dam posts ratios of BR 2@90, WR 2@100, YR 1@105, %IMF 1@101, RE 1@1090
WW ratio 113; YW ratio 105; RE ratio 109

FOR REFERENCE ONLY

Hyline Right Time 338

Sire of Lots 44-47



Hyline Right Time 338

338 continues to be one of the most popular bulls in the country for delivering powerful growth and high quality replacement females while keeping birth weights low. This highly proven bull has more than 7,000 calves with weaning and yearling ratios of 102 while maintaining a moderated birth weight EPD. His 338 daughters are long, deep bodied females with great udders. In addition, his calves consistently scan well, making him one of the most complete power bulls available today.

LaGrand

ANGUS & HEREFORD RANCH

Join us for our most powerful offering to date!

Saturday,

April 14, 2007

11 a.m. CT

Canova, South Dakota



**Denver
Carload
Member**
Lot 44

44 LaGrand 338 Right Time 6125
Bull: 15399061 • Tattoo: 6125 • Calved: 1/10/2006

#+Leachman Right Time Hyline Right Time 338 Hyline Pride 265	#N Bar Emulation EXT Leachman Erica 0025 +Hyline S V F Traveler 0115 Hyline Pride 870	Act. BW 90 Adj. WW 718 Adj. YW 1300 Adj. SC 39.91 Adj. IMF 2.72 Adj. REA 15.0
#B/R New Design 036 Clifton Pride 1019 7159 036 +Finks Pride 7159 345 692	#V D A R New Trend 315 B/R Blackcap Empress 76 #+Ideal 692 of 9J9 3134 +Finks Pride 345 119 Trav	

CED	BW	WW	YW	Milk	SC	%IMF	RE	Fat
+5	+2.8	+47	I+85	+29	I+.64	I+.22	I+.32	I-.003
\$W (Weaning)		\$F (Feedlot)		\$G (Grid)		\$B (Beef)		
+27.07		+26.48		+18.29		+41.12		

Bull Calf Champion at the 2006 South Dakota State Fair
Ranks in the top 3% for Milk
Ranks in the top 20% for WW, SW, SB
Dam posts ratios of BR 4@97, WR 4@103, YR 3@104, %IMF 3@107
IMF ratio 119

46 LaGrand 338 Right Time 6909
Bull: 15625135 • Tattoo: 6909 • Calved: 2/11/2006

#+Leachman Right Time Hyline Right Time 338 Hyline Pride 265	#N Bar Emulation EXT Leachman Erica 0025 +Hyline S V F Traveler 0115 Hyline Pride 870	Act. BW 112 Adj. WW 648 Adj. YW 1211 Adj. SC 40.83 Adj. IMF 2.92 Adj. REA 13.5
#Oneills Duke Bear MTN Lady Eraline 302 +Oneills Eraline 100	+R&J Milky Way 1406 Oneills Delia 465 #Premier Independence K N #Oneills Eraline 42	

CED	BW	WW	YW	Milk	SC	%IMF	RE	Fat
I+1	I+4.1	I+52	I+94	I+.26	I+.68	I+.09	I+.38	I-.005
\$W (Weaning)		\$F (Feedlot)		\$G (Grid)		\$B (Beef)		
+26.46		+33.84		+13.98		+41.61		

45 LaGrand 338 Right Time 6915
Bull: 15643765 • Tattoo: 6915 • Calved: 2/13/2006

#+Leachman Right Time Hyline Right Time 338 Hyline Pride 265	#N Bar Emulation EXT Leachman Erica 0025 +Hyline S V F Traveler 0115 Hyline Pride 870	Act. BW 109 Adj. WW 722 Adj. YW 1239 Adj. SC 39.90 Adj. IMF 3.02 Adj. REA 11.8
#Oneills Duke Bear MTN Lady Eraline 302 +Oneills Eraline 100	+R&J Milky Way 1406 Oneills Delia 465 #Premier Independence K N #Oneills Eraline 42	

CED	BW	WW	YW	Milk	SC	%IMF	RE	Fat
I+1	I+4.1	I+52	I+94	I+.26	I+.55	I+.10	I+.20	I-.006
\$W (Weaning)		\$F (Feedlot)		\$G (Grid)		\$B (Beef)		
+26.42		+33.84		+13.18		+40.81		

Ranks in the top 10% for WW, YW, Milk, SF
Ranks in the top 20% for SB

47 LaGrand 338 Right Time 6724
Bull: 15506116 • Tattoo: 6724 • Calved: 2/1/2006

#+Leachman Right Time Hyline Right Time 338 Hyline Pride 265	#N Bar Emulation EXT Leachman Erica 0025 +Hyline S V F Traveler 0115 Hyline Pride 870	Act. BW 97 Adj. WW 628 Adj. YW 1167 Adj. SC 40.01 Adj. IMF 2.95 Adj. REA 12.9
Bon View Black Baron 3250 #Bon View Gammer 1034 Bon View Gammer 112	Bon View Black Baron #Bon View Mo Barbara 3376 #TC Influence Bon View Gammer 569	

CED	BW	WW	YW	Milk	SC	%IMF	RE	Fat
I-3	I+3.2	I+45	I+81	I+.25	I+.97	I+.11	I+.20	I+.014
\$W (Weaning)		\$F (Feedlot)		\$G (Grid)		\$B (Beef)		
+25.14		+23.17		+12.03		+32.89		

Ranks in the top 15% for Milk



**Denver
Carload
Member**
Lot 48

48 LaGrand Freedom 6332

Bull: +15394880 • Tattoo: 6332 • Calved: 1/28/2006

#Connealy Forefront
TC Freedom 104
#T C Ruby 9095

#Connealy Frontline
Eileen Heartland Conanga6443
#TC Stockman 365
#+TC Ruby 4068

#G V Power Drive 7369
GB Miss Shippis 2093
G B Dynamite 1311

#+Brost Power Drive
#Green Valley Ectessa 82 85
#Vermilion Dynamite 6194
#R M O Marshall 9139

Act. Bw	100
Adj. WW	725
Adj. YW	1291
Adj. SC	39.96
Adj. IMF	2.19
Adj. REA	14.2

CED	BW	WW	YW	Milk	SC	%IMF	RE	Fat
I+3	I+2.5	I+41	I+72	I+21	I+.62	I+.06	I+.17	I-.015
SW (Weaning)		SF (Feedlot)		SG (Grid)		SB (Beef)		
+25.01		+15.63		+14.58		+30.09		

Reserve Bull Calf Champion at the 2006 South Dakota State Fair
Ranks in the top 10% for Fat



Lot 49

49 LaGrand Freedom 6738

Bull: +15495468 • Tattoo: 6738 • Calved: 1/8/2006

#Connealy Forefront
TC Freedom 104
#T C Ruby 9095

#Connealy Frontline
Eileen Heartland Conanga6443
#TC Stockman 365
#+TC Ruby 4068

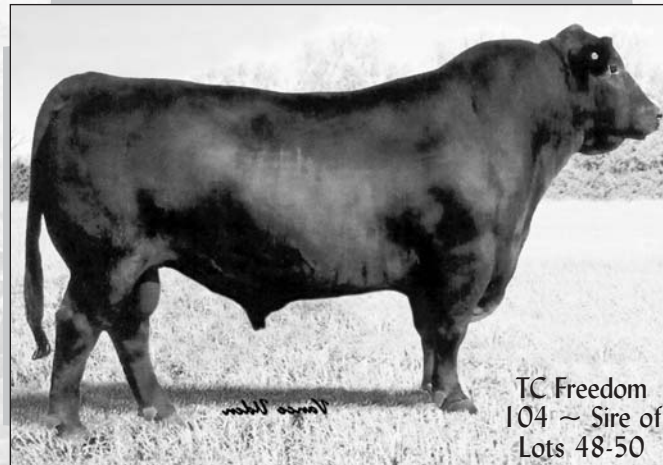
#TC Dividend 963
Oak Ridge 6807 MS Spade 1027
#+Oak Ridge MS 6807 Spade 985

#+Leachman Prompter
T C Erica Eileen 6006
#D H D Traveler 6807
Hoff Miss Spade 3103

Act. BW	89
Adj. WW	681
Adj. YW	1259
Adj. SC	38.74
Adj. IMF	3.38
Adj. REA	14.0

CED	BW	WW	YW	Milk	SC	%IMF	RE	Fat
I+6	I+2.0	I+46	I+82	I+29	I+.47	I+.03	I+.09	I+.008
SW (Weaning)		SF (Feedlot)		SG (Grid)		SB (Beef)		
+29.00		+23.79		+8.64		+30.14		

Ranks in the top 3% for Milk
Ranks in the top 10% for SW
Dam posts a ratio of WR 5@101
IMF ratio 127



TC Freedom
104 ~ Sire of
Lots 48-50

50 LaGrand Freedom 6719

Bull: +15503778 • Tattoo: 6719 • Calved: 2/1/2006

#Connealy Forefront
TC Freedom 104
#T C Ruby 9095

#Connealy Frontline
Eileen Heartland Conanga6443
#TC Stockman 365
#+TC Ruby 4068

#TC Dividend 963
Oak Ridge 6807 MS Spade 1027
#+Oak Ridge MS 6807 Spade 985

#+Leachman Prompter
T C Erica Eileen 6006
#D H D Traveler 6807
Hoff Miss Spade 3103

Act. BW	67
Adj. WW	641
Adj. YW	1118
Adj. SC	37.51
Adj. IMF	2.75
Adj. REA	12.9

CED	BW	WW	YW	Milk	SC	%IMF	RE	Fat
I+6	I+2.0	I+46	I+82	I+29	I+.42	I-.06	I-.03	I+.024
SW (Weaning)		SF (Feedlot)		SG (Grid)		SB (Beef)		
+28.92		+23.79		+1.55		+23.04		

Ranks in the top 3% for Milk
Ranks in the top 10% for SF
Ranks in the top 20% for SW
Dam posts a ratio of WR 5@101