

164 LaGrand 0699 Bando 6907

Bull: +15624212 • Tattoo: 6907 • Calved: 1/15/2006

#+S A F 598 Bando 5175 #Bon View Bando 598
 +S A V 5175 Bando 0699 +S A F Royal Lass 1002
 L L A Georgina 419 #+G A R Sleep Easy 1009
 Lyons Georgina 2165

#C R R Emulous 26 17 C R R Emulous 26
 #Larkota Erica 717 C R R Emulous Royal Lady
 Larkota Erica 0221 Bon View Hoss 1739
 Larkota Contender 415

Act. BW	101
Adj. WW	654
Adj. YW	1158
Adj. SC	40.97
Adj. IMF	4.03
Adj. REA	11.9

CED	BW	WW	YW	Milk	SC	%IMF	RE	Fat
I+1	I+2.5	I+44	I+82	I+21	I+49	I+20	I+48	I-005
SW (Weaning)			SF (Feedlot)		SG (Grid)		SB (Beef)	
+24.50			+24.59		+19.57		+41.14	

Ranks in the top 15% for RE
 Ranks in the top 20% for SG, SB
 Dam posts ratios of BR 6@97, WR 6@102, YR 5@101, %IMF 20@101, RE 20@102
 IMF ratio 124

165 LaGrand 0699 Bando 6918

Bull: +15626684 • Tattoo: 6918 • Calved: 1/16/2006

#+S A F 598 Bando 5175 #Bon View Bando 598
 +S A V 5175 Bando 0699 +S A F Royal Lass 1002
 L L A Georgina 419 #+G A R Sleep Easy 1009
 Lyons Georgina 2165

#C R R Emulous 26 17 C R R Emulous 26
 #Larkota Erica 717 C R R Emulous Royal Lady
 Larkota Erica 0221 Bon View Hoss 1739
 Larkota Contender 415

Act. BW	102
Adj. WW	658
Adj. YW	1263
Adj. SC	37.00
Adj. IMF	3.89
Adj. REA	13.9

CED	BW	WW	YW	Milk	SC	%IMF	RE	Fat
I+1	I+2.5	I+44	I+82	I+21	I-06	I+19	I+70	I-002
SW (Weaning)			SF (Feedlot)		SG (Grid)		SB (Beef)	
+24.65			+24.59		+20.06		+41.62	

Ranks in the top 3% for RE
 Ranks in the top 20% for SG, SB
 Dam posts ratios of BR 6@97, WR 6@102, YR 5@101, %IMF 20@101, RE 20@102
 IMF ratio 120; RE ratio 106

166 LaGrand 0699 Bando 6567

Bull: +15561237 • Tattoo: 6567 • Calved: 3/4/2006

#+S A F 598 Bando 5175 #Bon View Bando 598
 +S A V 5175 Bando 0699 +S A F Royal Lass 1002
 L L A Georgina 419 #+G A R Sleep Easy 1009
 Lyons Georgina 2165

#D H D Traveler 6807 #Q A S Traveler 23-4
 Sitz Emma E 1705 #Bemindful Maid D H D 0807
 Sitz Emma E 3003 Sitz Rito 7491
 Sitz Emma E 2517

Act. BW	98
Adj. WW	611
Adj. YW	1100
Adj. SC	39.85
Adj. IMF	3.94
Adj. REA	13.7

CED	BW	WW	YW	Milk	SC	%IMF	RE	Fat
I+5	I+2.4	I+43	I+90	I+18	I-07	I+27	I+48	I-024
SW (Weaning)			SF (Feedlot)		SG (Grid)		SB (Beef)	
+21.07			+33.30		+23.30		+48.85	

Ranks in the top 2% for Fat, and in the top 3% for SB
 Ranks in the top 10% for SF, SG
 Ranks in the top 15% for YW, RE
 Ranks in the top 20% for %IMF
 Dam posts ratios of YR 3@103, %IMF 41@102, RE 40@103
 IMF ratio 134

167 LaGrand Bob 6306

Bull: 15565390 • Tattoo: 6306 • Calved: 1/26/2006

Baldrige Bob #Bon View Bando 598
 +FV Bob 1441 J B Queen Peggy 5B
 +North Fork Primrose 6028 #Transformer 100 E A R
 N Bar Primrose 2424

#Famous 7001 #S A F Fame
 LaGrand Katinka 4195 T K Karen 1369
 Roth Katinka 9183 Bon View Ambush 1075
 Bon View Katinka 1807

Act. BW	74
Adj. WW	596
Adj. YW	1100
Adj. SC	39.85
Adj. IMF	2.50
Adj. REA	12.6

CED	BW	WW	YW	Milk	SC	%IMF	RE	Fat
I+4	I+2.5	I+35	I+66	I+22	I+21	I+03	I+07	I-005
SW (Weaning)			SF (Feedlot)		SG (Grid)		SB (Beef)	
+22.97			+11.97		+10.88		+22.48	

Dam posts ratios of BR 1@91

168 LaGrand Bob 6369

Bull: 15495374 • Tattoo: 6369 • Calved: 2/1/2006

Baldrige Bob #Bon View Bando 598
 +FV Bob 1441 J B Queen Peggy 5B
 +North Fork Primrose 6028 #Transformer 100 E A R
 N Bar Primrose 2424

Hylina Right Time 338 #+Leachman Right Time
 LaGrand Miss Countess 4228 Hylina Pride 265
 #+Roth Miss Countess 1572 #J L B Exacto 416
 +Grubbs Miss Countess 252

Act. BW	88
Adj. WW	678
Adj. YW	1137
Adj. SC	41.04
Adj. IMF	2.51
Adj. REA	16.2

CED	BW	WW	YW	Milk	SC	%IMF	RE	Fat
+4	+3.9	+45	I+78	+27	I+36	I+02	I+74	I+0
SW (Weaning)			SF (Feedlot)		SG (Grid)		SB (Beef)	
+25.34			+20.11		+14.89		+34.06	

Ranks in the top 2% for RE
 Ranks in the top 10% for Milk
 Dam posts ratios of WR 1@109, YR 1@101, RE 1@117
 WW ratio 109; RE ratio 117

169 LaGrand Bob 6388

Bull: 15495378 • Tattoo: 6388 • Calved: 2/3/2006

Baldrige Bob #Bon View Bando 598
 +FV Bob 1441 J B Queen Peggy 5B
 +North Fork Primrose 6028 #Transformer 100 E A R
 N Bar Primrose 2424

#Famous 7001 #S A F Fame
 LaGrand Diamond Lass 4353 T K Karen 1369
 +North Fork Diamond Lass 1110 #N Bar Emulation EXT
 +V A R Diamond Lass 4900

Act. BW	84
Adj. WW	596
Adj. YW	1026
Adj. SC	41.6
Adj. IMF	2.70
Adj. REA	10.5

CED	BW	WW	YW	Milk	SC	%IMF	RE	Fat
+6	+3.0	+34	I+59	+21	I+42	I+03	I-08	I+013
SW (Weaning)			SF (Feedlot)		SG (Grid)		SB (Beef)	
+22.87			+5.49		+8.55		+15.76	

Ranks in the top 2% for RE
 Ranks in the top 20% for SG, SB
 Dam posts ratios of BR 6@97, WR 6@102, YR 5@101, %IMF 20@101, RE 20@102
 IMF ratio 120; RE ratio 106

170 LaGrand Bob 6508

Bull: 15495414 • Tattoo: 6508 • Calved: 2/6/2006

Baldrige Bob #Bon View Bando 598
 +FV Bob 1441 J B Queen Peggy 5B
 +North Fork Primrose 6028 #Transformer 100 E A R
 N Bar Primrose 2424

+BAAR LaGrand Sureshot 1192 #B/R New Design 323
 LaGrand Miss Blackcap 4472 H R Wendy 618
 Bedels Miss Blackcap 014 #+Leachman Prompter
 C C L Blackcap Whitney

Act. BW	88
Adj. WW	668
Adj. YW	1201
Adj. SC	40.2
Adj. IMF	3.66
Adj. REA	15.3

CED	BW	WW	YW	Milk	SC	%IMF	RE	Fat
+6	+3.7	+41	I+72	+23	I+25	I+12	I+41	I+015
SW (Weaning)			SF (Feedlot)		SG (Grid)		SB (Beef)	
+23.41			+15.63		+15.14		+30.65	

Dam posts ratios of WR 1@107, YR 1@107, %IMF 1@117, RE 1@111
 WW ratio 107; YW ratio 107; IMF ratio 117; RE ratio 111

171 LaGrand Bob 6473

Bull: 15495402 • Tattoo: 6473 • Calved: 2/14/2006

Baldrige Bob #Bon View Bando 598
 +FV Bob 1441 J B Queen Peggy 5B
 +North Fork Primrose 6028 #Transformer 100 E A R
 N Bar Primrose 2424

+La Grand 2617 #B/R New Design 323
 LaGrand Lucy 4114 +Bear MTN Forever Lady 601
 +Rocky Mt Lucy 056 #+V D A R Lucys Boy
 +V D A R Lucy 3004

Act. BW	100
Adj. WW	707
Adj. YW	1256
Adj. SC	39.45
Adj. IMF	3.27
Adj. REA	15.2

CED	BW	WW	YW	Milk	SC	%IMF	RE	Fat
+0	+5.7	+44	I+74	+23	I+16	I+06	I+49	I+004
SW (Weaning)			SF (Feedlot)		SG (Grid)		SB (Beef)	
+20.51			+16.47		+14.65		+31.31	

Ranks in the top 15% for RE
 Dam posts ratios of WR 1@113, YR 1@111, %IMF 1@104, RE 1@110
 RE ratio 110

172 LaGrand Bob 6476

Bull: 15495403 • Tattoo: 6476 • Calved: 2/15/2006

Baldridge Bob #Bon View Bando 598
 +FV Bob 1441 J B Queen Peggy 5B
 +North Fork Primrose 6028 #Transformer 100 E A R
 N Bar Primrose 2424

+W C C Precision E161 J239 #Twin Valley Precision E161 (FR)
 LaGrand Beauty 4469 N Bar Primrose 2424
 +Roth Beauty 2711 #Basin Max 602C
 North Fork Beauty 5017

Act. BW	80
Adj. WW	630
Adj. YW	1084
Adj. SC	37.99
Adj. IMF	2.99
Adj. REA	14.9

CED	BW	WW	YW	Milk	SC	%IMF	RE	Fat
+7	+2.5	+38	+72	+21	-1.01	+1.13	+4.48	+0.012
\$W (Weaning)			\$F (Feedlot)	SG (Grid)		SB (Beef)		
+23.41			+16.80	+16.34		+31.95		

Ranks in the top 15% for RE
 Dam posts ratios of BR 1@97, WR 1@101, RE 1@108
 RE ratio 108

173 LaGrand Bob 6497

Bull: 15495409 • Tattoo: 6497 • Calved: 2/18/2006

Baldridge Bob #Bon View Bando 598
 +FV Bob 1441 J B Queen Peggy 5B
 +North Fork Primrose 6028 #Transformer 100 E A R
 N Bar Primrose 2424

+W C C Precision E161 J239 #Twin Valley Precision E161 (FR)
 LaGrand Ellen 4179 N Bar Primrose 2424
 Roth Ellen 2383 #Famous 7001
 +North Fork Ellen 6047

Act. BW	90
Adj. WW	600
Adj. YW	1149
Adj. SC	39.58
Adj. IMF	3.71
Adj. REA	14.6

CED	BW	WW	YW	Milk	SC	%IMF	RE	Fat
+3	+4.1	+38	+75	+19	+1.18	+1.11	+3.38	+0.009
\$W (Weaning)			\$F (Feedlot)	SG (Grid)		SB (Beef)		
+18.65			+19.82	+14.86		+32.32		

Dam posts ratios YR 1@102, %IMF 1@118, RE 1@106
 IMF ratio 118; RE ratio 106

174 LaGrand Bob 6503

Bull: 15495411 • Tattoo: 6503 • Calved: 2/19/2006

Baldridge Bob #Bon View Bando 598
 +FV Bob 1441 J B Queen Peggy 5B
 +North Fork Primrose 6028 #Transformer 100 E A R
 N Bar Primrose 2424

#Bon View New Design 878 #B/R New Design 036
 LaGrand Miss Countess 4078 Bon View Gammer 85
 +LaGrand Miss Countess 233 #Alberda Traveler 416
 Grubbs Miss Countess 826

Act. BW	96
Adj. WW	640
Adj. YW	1064
Adj. SC	36.11
Adj. IMF	3.36
Adj. REA	12.2

CED	BW	WW	YW	Milk	SC	%IMF	RE	Fat
+5	+4.0	+41	+75	+26	-1.24	+1.07	+2.23	+0.016
\$W (Weaning)			\$F (Feedlot)	SG (Grid)		SB (Beef)		
+22.82			+18.65	+11.33		+28.68		

Ranks in the top 10% for Milk
 Dam posts ratios of WR 1@103, %IMF 1@107
 IMF ratio 107

175 LaGrand Bob 6509

Bull: 15495415 • Tattoo: 6509 • Calved: 2/20/2006

Baldridge Bob #Bon View Bando 598
 +FV Bob 1441 J B Queen Peggy 5B
 +North Fork Primrose 6028 #Transformer 100 E A R
 N Bar Primrose 2424

+W C C Special Design L309 #Bon View New Design 878
 LaGrand Katinka 4230 N Bar Primrose 2424
 Roth Katinka 9095 #Connealy Dateline
 #Bon View Katinka 1346

Act. BW	88
Adj. WW	723
Adj. YW	1227
Adj. SC	39.15
Adj. IMF	3.00
Adj. REA	13.3

CED	BW	WW	YW	Milk	SC	%IMF	RE	Fat
+6	+3.6	+44	+80	+22	+1.10	+1.03	+1.18	+0.014
\$W (Weaning)			\$F (Feedlot)	SG (Grid)		SB (Beef)		
+23.35			+22.54	+8.91		+29.19		

Dam posts ratios of WR 1@104, YR 1@102

FOR REFERENCE ONLY

GAR Integrity

Sire of Lots 176-178

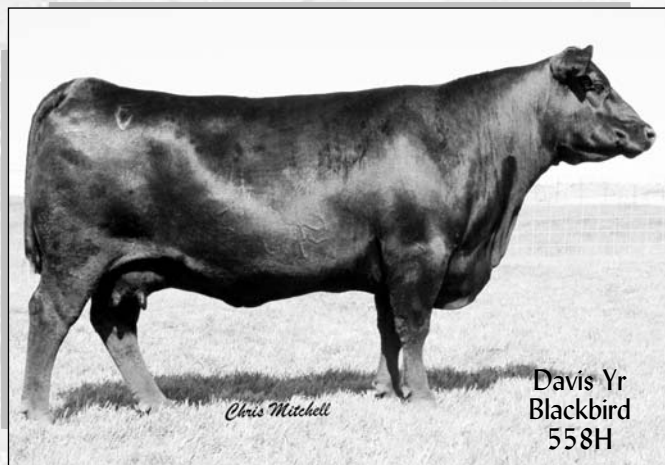


GAR Integrity has captured the attention of the entire Angus breed. This 1407 son out of 1019 sold at the top of the Gardiner sale and has been in high demand ever since – rarely does a young bull generate this kind of interest in any breed. Integrity jumped all the hurdles to become a Lot 1 bull in Ashland, following in the footsteps of bulls like Precision, Expectation, Grid Maker and Yield Grade. He gets thicker with age and consistently produces some of the highest quality semen of any bull. Potential for greatness? No other bull has more. Don't miss the opportunity to use the freshest, most popular genetics in the breed today – Integrity – he is that good!

FOR REFERENCE ONLY

Davis Jr Blackbird 558H

Maternal Granddam of Lots 176-178 and 210



The \$260,000 one-half interest top-selling female of the 2004 Riverbend Sale, this longtime breed-leader for end-product merit records a progeny IMF ratio of 112 and a progeny REA ratio of 105 based on 106 head evaluated by ultrasound. Currently, 558H records the 22nd highest IMF EPD, the 24th highest RE EPD and the 28th highest %RP EPD among all Angus dams.



#Bon View New Design 1407
+G A R Integrity
G A R Precision 1019

#B/R New Design 036
Bon View Pride 664
#G A R Precision 1680
#+G A R Ext 755

#+V D A R Lucys Boy
+Acf Blackbird 9535
Davis Yr Blackbird 558H

#Traveler 1148 G D A R
+V D A R Pine Drive Lucy 5
#G A R Precision 1680
G A R Traveler 760

Full brothers out of
G A R Integrity
sell as
Lots 176-178!

176 LaGrand Integrity 6905
Bull: +15646526 • Tattoo: 6905 • Calved: 1/20/2006

CED	BW	WW	YW	Milk	SC	%IMF	RE	Fat
I+9	I+1.2	I+32	I+65	I+26	I+0	I+22	I+30	I-.004
SW (Weaning)		SF (Feedlot)		SG (Grid)		SB (Beef)		
+25.46		+11.84		+25.24		+36.59		

Act. Bw
90
Adj. WW
616
Adj. YW
1173
Adj. SC
40.13
Adj. IMF
2.18
Adj. REA
11.6

177 LaGrand Integrity 6908
Bull: +15646527 • Tattoo: 6908 • Calved: 1/12/2006

CED	BW	WW	YW	Milk	SC	%IMF	RE	Fat
I+9	I+1.2	I+32	I+65	I+26	I-.16	I+38	I+37	I+.006
SW (Weaning)		SF (Feedlot)		SG (Grid)		SB (Beef)		
+25.46		+11.84		+25.24		+36.59		

Act. Bw
84
Adj. WW
623
Adj. YW
1164
Adj. SC
38.87
Adj. IMF
3.57
Adj. REA
12.2

178 LaGrand Integrity 6920
Bull: +15646528 • Tattoo: 6920 • Calved: 1/17/2006

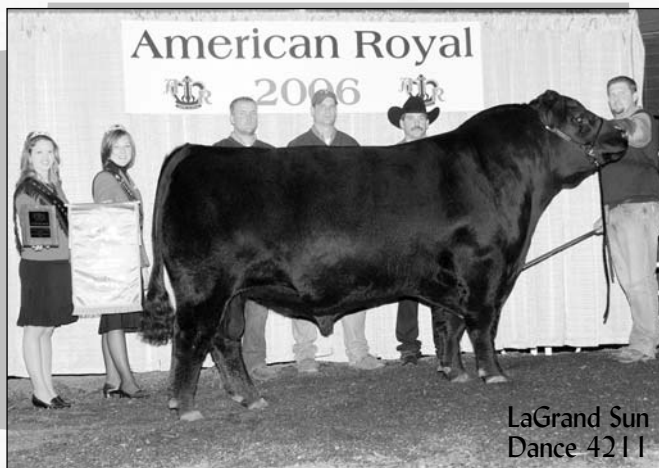
CED	BW	WW	YW	Milk	SC	%IMF	RE	Fat
I+9	I+1.2	I+32	I+65	I+26	I-.26	I+32	I+54	I-.005
SW (Weaning)		SF (Feedlot)		SG (Grid)		SB (Beef)		
+25.46		+11.84		+25.24		+36.59		

Act. Bw
87
Adj. WW
665
Adj. YW
1209
Adj. SC
38.03
Adj. IMF
3.04
Adj. REA
13.8

FOR REFERENCE ONLY

LaGrand Sun Dance 4211

Sire of Lots 179-188 and 290-294



179 LaGrand Sun Dance 6246
 Bull: 15434515 • Tattoo: 6246 • Calved: 1/20/2006

+P V F New Horizon 001	#B/R New Design 323	Act. BW
LaGrand Sun Dance 4211	Hyline Ellen 410	94
Partisover Burgess 616	#N Bar Emulation EXT	Adj. WW
	Partisover Burgess 431	672
		Adj. YW
		1274
		Adj. SC
		40.65
+B/R New Frontier 095	#B/R New Design 036	Adj. IMF
LaGrand Lucy 3335	White Fence Pride H1	4.23
+Roth Lucy 1533	#G A R Precision 1680	Adj. REA
	V D A R Lucy 166	12.6

CED	BW	WW	YW	Milk	SC	%IMF	RE	Fat
+4	+4.7	+55	I+103	+19	I+.18	I+.34	I+.15	I+.006
\$W (Weaning)		\$F (Feedlot)		\$G (Grid)		\$B (Beef)		
+21.39		+42.19		+17.69		+48.65		

Ranks in the top 2% for YW, \$F
 Ranks in the top 3% for WW, \$B
 Ranks in the top 15% for %IMF
 Dam posts ratios of BR 2@85, YR 2@101, %IMF 2@131
 YW ratio 106, IMF ratio 131

180 LaGrand Sun Dance 6143
 Bull: 15495308 • Tattoo: 6143 • Calved: 1/11/2006

+P V F New Horizon 001	#B/R New Design 323	Act. BW
LaGrand Sun Dance 4211	Hyline Ellen 410	76
Partisover Burgess 616	#N Bar Emulation EXT	Adj. WW
	Partisover Burgess 431	593
		Adj. YW
		1063
		Adj. SC
		35.86
#Rockn D Ambush 1531	#Paramont Ambush 2172	Adj. IMF
LaGrand Beauty 3913	MS Blackcap Band of R D 1301	2.63
B/R Beauty 6202	#+G A R Sleep Easy 1009	Adj. REA
	+B/R Shoshone Beauty 15	11.9

CED	BW	WW	YW	Milk	SC	%IMF	RE	Fat
+7	+2.1	+48	I+82	+14	I-.34	I+.01	I+.02	I-.003
\$W (Weaning)		\$F (Feedlot)		\$G (Grid)		\$B (Beef)		
+26.02		+23.00		+8.68		+30.10		

Ranks in the top 15% for CEM
 Ranks in the top 20% for WW
 Dam posts a ratio of BR 2@70

181 LaGrand Sun Dance 6822

Bull: #15495482 • Tattoo: 6822 • Calved: 1/19/2006

+P V F New Horizon 001 #B/R New Design 323
LaGrand Sun Dance 4211 Hyline Ellen 410
Partisover Burgess 616 #N Bar Emulation EXT
Partisover Burgess 431

#J L B Exacto 416 #G A R Precision 1680
+Roth Rosella Eileenmere 1122 +Brost Burgess 041
CW Rosella Eileenmere 623 Basin Sensation 259D
Rosella Eileenmere 421

Act. Bw	99
Adj. WW	
Adj. YW	1012
Adj. SC	
	38.13
Adj. IMF	
Adj. REA	

CED	BW	WW	YW	Milk	SC	%IMF	RE	Fat
I+1	I+4.2	I+58	I+99	I+21		I+.11	I+.37	I+.003
SW (Weaning)			SF (Feedlot)		SG (Grid)		SB (Beef)	
+25.86			+36.67		+13.07		+42.03	

Ranks in the top 10% for WW, YW, SF
Dam posts ratios of YR 3@102, %IMF 3@118, RE 2@107

182 LaGrand Sun Dance 6270

Bull: #15495343 • Tattoo: 6270 • Calved: 1/23/2006

+P V F New Horizon 001 #B/R New Design 323
LaGrand Sun Dance 4211 Hyline Ellen 410
Partisover Burgess 616 #N Bar Emulation EXT
Partisover Burgess 431

#S S Traveler 6807 T510 #D H D Traveler 6807
+LaGrand Blacklass 2838 #S S Miss Hi Spade A114
Broken Arrow Roth MS RUSS808 #+Gdar SVF Russ 184B
Brokenarrow Blacklass3904-18

Act. Bw	86
Adj. WW	
Adj. YW	638
Adj. SC	
	1230
Adj. IMF	
Adj. REA	
	39.41
	2.77
	13.1

CED	BW	WW	YW	Milk	SC	%IMF	RE	Fat
+5	+3.2	+58	I+107	I+20	I+.08	I+.02	I+.02	I-.005
SW (Weaning)			SF (Feedlot)		SG (Grid)		SB (Beef)	
+25.60			+45.25		+6.76		+39.25	

Ranks in the top 1% for YW, SF
Ranks in the top 2% for WW
Dam posts ratios of BR 3@91, YR 3@103
YW ratio 109

183 LaGrand Sun Dance 6845

Bull: #15495489 • Tattoo: 6845 • Calved: 2/2/2006

+P V F New Horizon 001 #B/R New Design 323
LaGrand Sun Dance 4211 Hyline Ellen 410
Partisover Burgess 616 #N Bar Emulation EXT
Partisover Burgess 431

#Papa Durabull 9805 #Scotch Cap
+LaGrand Burgess 2834 #Envious Blackbird D H D 3811
+Partisover Burgess 810 #N Bar Emulation EXT
+Partisover Burgess 659

Act. Bw	98
Adj. WW	
Adj. YW	741
Adj. SC	
	1255
Adj. IMF	
Adj. REA	
	38.73
	3.01
	15.4

CED	BW	WW	YW	Milk	SC	%IMF	RE	Fat
+2	+4.3	+63	I+107	I+23	I+0	I+.06	I+.64	I+.025
SW (Weaning)			SF (Feedlot)		SG (Grid)		SB (Beef)	
+27.49			+43.16		+10.10		+42.29	

Ranks in the top 1% for WW, YW
Ranks in the top 2% for SF
Ranks in the top 5% for RE
Ranks in the top 15% for SB
Ranks in the top 20% for SW
Dams posts ratios of BR 2@92, WR 3@103, YR 2@109, %IMF 2@103, RE 2@113
WW ratio 113; YW ratio 113; IMF ratio 107; RE ratio 116

184 LaGrand Sun Dance 6384

Bull: #15495377 • Tattoo: 6384 • Calved: 2/3/2006

+P V F New Horizon 001 #B/R New Design 323
LaGrand Sun Dance 4211 Hyline Ellen 410
Partisover Burgess 616 #N Bar Emulation EXT
Partisover Burgess 431

#Famous 7001 #S A F Fame
+LaGrand Beauty 3907 T K Karen 1369
+North Fork Beauty 8121 +G A R Ext 4344
+North Fork Beauty 6057

Act. Bw	94
Adj. WW	
Adj. YW	629
Adj. SC	
	1183
Adj. IMF	
Adj. REA	
	36.60
	3.38
	13.5

CED	BW	WW	YW	Milk	SC	%IMF	RE	Fat
-2	+5.8	+58	I+103	I+18	I-.23	I+.04	I+.36	I+.005
SW (Weaning)			SF (Feedlot)		SG (Grid)		SB (Beef)	
+20.48			+40.94		+9.83		+40.61	

Ranks in the top 2% for WW, YW
Ranks in the top 3% for SF
Ranks in the top 20% for SB
Dam posts ratios of YR 2@100, %IMF 2@109, RE 2@102
YW ratio 105; IMF ratio 108

185 LaGrand Sun Dance 6847

Bull: #15495490 • Tattoo: 6847 • Calved: 2/3/2006

+P V F New Horizon 001 #B/R New Design 323
LaGrand Sun Dance 4211 Hyline Ellen 410
Partisover Burgess 616 #N Bar Emulation EXT
Partisover Burgess 431

#Finks 5522-6148 #Emulation N Bar 5522
+Roth Wendy 2733 Finks Proud Formera 614
+Double Bar Wendy 508-0100 #C H 054 Rito 0100
K M R Wendy 508

Act. Bw	100
Adj. WW	
Adj. YW	673
Adj. SC	
	1086
Adj. IMF	
Adj. REA	
	36.76
	1.95
	12.5

CED	BW	WW	YW	Milk	SC	%IMF	RE	Fat
+0	+5.1	+59	I+96	+20	I-.21	I-.06	I+.24	I+.007
SW (Weaning)			SF (Feedlot)		SG (Grid)		SB (Beef)	
+25.50			+33.09		+5.05		+33.02	

Ranks in the top 1% for WW
Ranks in the top 5% for YW
Ranks in the top 10% for SF
Dam posts ratios of BR 3@95, RE 2@100

186 LaGrand Sun Dance 6421

Bull: #15495387 • Tattoo: 6421 • Calved: 2/7/2006

+P V F New Horizon 001 #B/R New Design 323
LaGrand Sun Dance 4211 Hyline Ellen 410
Partisover Burgess 616 #N Bar Emulation EXT
Partisover Burgess 431

#Twin Valley Precision E161 (FR) #G A R Precision 1680
+LaGrand Forever 3931 +W C C Blackcap C9 (R)
J R Forever 399G #Rockn D Ambush 1531
#+J R Forever 286D

Act. Bw	107
Adj. WW	
Adj. YW	798
Adj. SC	
	1385
Adj. IMF	
Adj. REA	
	36.23
	3.94
	14.7

CED	BW	WW	YW	Milk	SC	%IMF	RE	Fat
-6	+6.8	+67	I+115	+21	I-.30	I+.13	I+.37	I+.003
SW (Weaning)			SF (Feedlot)		SG (Grid)		SB (Beef)	
+21.51			+50.18		+12.49		+46.87	

Ranks in the top 1% for WW, YR
Ranks in the top 5% for SB
Dam posts ratios of WR 2@114, YR 2@116, %IMF 2@114, RE 2@116
WW ratio 115; YW ratio 115; IMF ratio 122

187 LaGrand Sun Dance 6426

Bull: #15495392 • Tattoo: 6426 • Calved: 2/8/2006

+P V F New Horizon 001 #B/R New Design 323
LaGrand Sun Dance 4211 Hyline Ellen 410
Partisover Burgess 616 #N Bar Emulation EXT
Partisover Burgess 431

#C A Future Direction 5321 #G A R Precision 1680
+LaGrand Miss Countess 3829 C A Miss Power Fix 308
+Grubbs Miss Countess 252 #TC Dividend 963
D G Miss Countess 535

Act. Bw	91
Adj. WW	
Adj. YW	681
Adj. SC	
	1294
Adj. IMF	
Adj. REA	
	40.26
	3.16
	13.6

CED	BW	WW	YW	Milk	SC	%IMF	RE	Fat
+2	+4.0	+59	I+100	+26	I+.33	I+.18	I+.29	I+.003
SW (Weaning)			SF (Feedlot)		SG (Grid)		SB (Beef)	
+28.02			+37.32		+14.70		+44.25	

Ranks in the top 1% for WW
Ranks in the top 3% for YW, SW
Ranks in the top 5% for SF
Ranks in the top 20% for CED
Dam posts ratios of BR 2@90, WR 2@100, YR 1@105, %IMF 1@101, RE 1@109

188 LaGrand Sun Dance 6432

Bull: #15495394 • Tattoo: 6432 • Calved: 2/9/2006

+P V F New Horizon 001 #B/R New Design 323
LaGrand Sun Dance 4211 Hyline Ellen 410
Partisover Burgess 616 #N Bar Emulation EXT
Partisover Burgess 431

#Rockn D Ambush 1531 #Paramont Ambush 2172
+LaGrand Butterfly 3912 MS Blackcap Band of R D 1301
+Diablo Butter Fly 54 +TC Stockman
+Diablo Foxy Fire Fly 279

Act. Bw	82
Adj. WW	
Adj. YW	735
Adj. SC	
	1229
Adj. IMF	
Adj. REA	
	42.29
	3.34
	14.1

CED	BW	WW	YW	Milk	SC	%IMF	RE	Fat
+3	+4.1	+67	I+105	+17	I+.38	I+.16	I+.29	I-.016
SW (Weaning)			SF (Feedlot)		SG (Grid)		SB (Beef)	
+28.89			+39.35		+15.97		+47.11	

Ranks in the top 1% for WW, YW
Ranks in the top 3% for SF
Ranks in the top 5% for SB
Ranks in the top 10% for Fat, SW
Dam posts ratios of BR 2@93, WR 2@111, YR 2@104, %IMF 2@103, RE 2@102
WW ratio 118; YW ratio 109; IMF ratio 106

FOR REFERENCE ONLY

P V F New Horizon 001

Sire of Lots 189-193 and 288-289



A smooth, attractive bull that will add performance, eye appeal and structural correctness. His offspring have achieved great success in the show ring. 001 sired the Reserve Grand Champion Open Show Female and Grand Champion Bull at the 2006 NAILE ROV Angus Show.

189 LaGrand New Horizon 6429

Bull: +15495393 • Tattoo: 6429 • Calved: 2/8/2006

#B/R New Design 323
+P V F New Horizon 001
Hyline Ellen 410

#B/R New Design 036
B/R Ruby of Tiffany 155
#Hyline Travel Agent
#Hyline Ellen 9062

#Sitz Traveler 9929
+TC Peg 7021
#TC Peg 9100

#D H D Traveler 6807
Sitz Everelda Entense 1137
#+Leachman Prompter
T C Peg 6108

Act. BW	98
Adj. WW	612
Adj. YW	1223
Adj. SC	40.24
Adj. IMF	2.41
Adj. REA	14.2

CED	BW	WW	YW	Milk	SC	%IMF	RE	Fat
I+5	I+3.7	I+43	I+85	I+22	I+.55	I-.16	I+.33	I-.010
\$W (Weaning)		\$F (Feedlot)		\$G (Grid)		\$B (Beef)		
+21.02		+28.08		+6.32		+28.88		

Ranks in the top 1% for WW
Ranks in the top 3% for YW
Ranks in the top 10% for Milk, \$F, \$B
Ranks in the top 15% for \$W
Dam posts ratios of WR 2@111, %IMF 2@109

190 LaGrand New Horizon 6755

Bull: +15495473 • Tattoo: 6755 • Calved: 3/6/2006

#B/R New Design 323
+P V F New Horizon 001
Hyline Ellen 410

#B/R New Design 036
B/R Ruby of Tiffany 155
#Hyline Travel Agent
#Hyline Ellen 9062

#Sitz Traveler 9929
+TC Peg 7021
#TC Peg 9100

#D H D Traveler 6807
Sitz Everelda Entense 1137
#+Leachman Prompter
T C Peg 6108

Act. BW	90
Adj. WW	661
Adj. YW	1223
Adj. SC	40.24
Adj. IMF	2.67
Adj. REA	13.9

CED	BW	WW	YW	Milk	SC	%IMF	RE	Fat
I+5	I+3.7	I+43	I+85	I+22	I+.32	I-.15	I+.36	I-.010
\$W (Weaning)		\$F (Feedlot)		\$G (Grid)		\$B (Beef)		
+20.95		+28.08		+6.97		+29.53		

Ranks in the top 15% for Fat
Dam posts ratios of WR 4@101, YR 4@102, RE 42@101
RE ratio 105

191 LaGrand New Horizon 6758

Bull: +15495475 • Tattoo: 6758 • Calved: 3/5/2006

#B/R New Design 323
+P V F New Horizon 001
Hyline Ellen 410

#B/R New Design 036
B/R Ruby of Tiffany 155
#Hyline Travel Agent
#Hyline Ellen 9062

#Sitz Traveler 9929
+TC Peg 7021
#TC Peg 9100

#D H D Traveler 6807
Sitz Everelda Entense 1137
#+Leachman Prompter
T C Peg 6108

Act. BW	75
Adj. WW	585
Adj. YW	1223
Adj. SC	40.24
Adj. IMF	3.56
Adj. REA	12.2

CED	BW	WW	YW	Milk	SC	%IMF	RE	Fat
I+5	I+3.7	I+43	I+85	I+22	I+.32	I-.05	I+.18	I-.008
\$W (Weaning)		\$F (Feedlot)		\$G (Grid)		\$B (Beef)		
+20.95		+28.08		+8.04		+31.60		

Ranks in the top 20% for Fat
Dam posts ratios of WR 4@101, YR 4@102, RE 42@101
IMF ratio 123

192 LaGrand New Horizon 6594

Bull: +15495434 • Tattoo: 6594 • Calved: 3/13/2006

#B/R New Design 323
+P V F New Horizon 001
Hyline Ellen 410

#B/R New Design 036
B/R Ruby of Tiffany 155
#Hyline Travel Agent
#Hyline Ellen 9062

#S S Traveler 6807 T510
+Maple Lane Forever Lady 277
+S V F Forever Lady 1120

#D H D Traveler 6807
#S S Miss Hi Spade A114
#+Skarship Saratoga
#Forever Lady 163 G D A R

Act. BW	92
Adj. WW	608
Adj. YW	1223
Adj. SC	40.24
Adj. IMF	2.26
Adj. REA	13.0

CED	BW	WW	YW	Milk	SC	%IMF	RE	Fat
I+8	I+2.3	I+47	I+93	I+20	I+.02	I+.02	I+.25	I+.008
\$W (Weaning)		\$F (Feedlot)		\$G (Grid)		\$B (Beef)		
+23.83		+34.83		+8.00		+33.96		

Ranks in the top 10% for YR, \$F
Ranks in the top 20% for CED, WW

193 LaGrand New Horizon 6605

Bull: +15495439 • Tattoo: 6605 • Calved: 3/15/2006

#B/R New Design 323
+P V F New Horizon 001
Hyline Ellen 410

#B/R New Design 036
B/R Ruby of Tiffany 155
#Hyline Travel Agent
#Hyline Ellen 9062

#TC Stockman 365
+Oneills Lady Blackcap 30
+Oneills Lady Blackcap

#TC Stockman
TC Pride 0014
#+Oneills Renovator
#Blackcap Lady 3187 G D A R

Act. BW	102
Adj. WW	685
Adj. YW	1223
Adj. SC	40.24
Adj. IMF	1.98
Adj. REA	12.4

CED	BW	WW	YW	Milk	SC	%IMF	RE	Fat
I+5	I+4.3	I+46	I+85	I+21	I-.14	I-.15	I+.15	I+.0
\$W (Weaning)		\$F (Feedlot)		\$G (Grid)		\$B (Beef)		
+21.42		+26.88		+6.18		+28.34		

Dam posts ratios of WR 2@109, YR 2@104



ANGUS & HEREFORD RANCH

Complete ultrasound and performance data will be available sale day.

194 LaGrand Sureshot 6355

Bull: 15495369 • Tattoo: 6355 • Calved: 1/30/2006

#B/R New Design 323
+BAAR LaGrand Sureshot 1192
H R Wendy 618

#B/R New Design 036
B/R Ruby of Tiffany 155
#Bon View Bando 598
+H R Wendy 402

#Famous 7001
LaGrand Pearl 4311
North Fork Pearl 9268

#S A F Fame
T K Karen 1369
+G A R Ext 4344
#Gladwall L Pearl 908

Act. BW	89
Adj. WW	695
Adj. YW	1282
Adj. SC	40.47
Adj. IMF	3.47
Adj. REA	15.2

CED	BW	WW	YW	Milk	SC	%IMF	RE	Fat
+0	+4.1	+49	I+86	+22	I+42	I+13	I+66	I-.007
SW (Weaning)			SF (Feedlot)	SG (Grid)		SB (Beef)		
+24.11			+26.71	+19.77		+42.68		

Ranks in the top 4% for RE
Ranks in the top 15% for WW, SB
Ranks in the top 20% for YW, Fat
Dam posts ratios of WR 1@112, YR 1@114, %IMF 1@111, RE 1@110
WW ratio 112; YW ratio 114; IMF ratio 111; RE ratio 110

195 LaGrand Sureshot 6478

Bull: 15495405 • Tattoo: 6478 • Calved: 2/15/2006

#B/R New Design 323
+BAAR LaGrand Sureshot 1192
H R Wendy 618

#B/R New Design 036
B/R Ruby of Tiffany 155
#Bon View Bando 598
+H R Wendy 402

#Connealy Freightliner
LaGrand Lady 4006
+LaGrand Lady 2583

#Bon View Bando 598
Joana Erica of Conanga
#Famous 7001
Donamere Lady 2743

Act. Bw	88
Adj. WW	724
Adj. YW	1273
Adj. SC	43.99
Adj. IMF	3.19
Adj. REA	15.2

CED	BW	WW	YW	Milk	SC	%IMF	RE	Fat
+6	+2.4	+52	I+90	+25	I+.85	I+11	I+.31	I-.010
SW (Weaning)			SF (Feedlot)	SG (Grid)		SB (Beef)		
+29.01			+29.66	+15.86		+40.13		

Ranks in the top 10% WW, \$W
Ranks in the top 15% YW, Milk, Fat
Ranks in the top 20% for SC, SF
Dam posts ratios of WR 1@116, YR 1@113, %IMF 1@102, RE 1@110
WW ratio 116; YW ratio 113; RE ratio 110

196 LaGrand Sureshot 6584

Bull: 15495433 • Tattoo: 6584 • Calved: 3/7/2006

#B/R New Design 323
+BAAR LaGrand Sureshot 1192
H R Wendy 618

#B/R New Design 036
B/R Ruby of Tiffany 155
#Bon View Bando 598
+H R Wendy 402

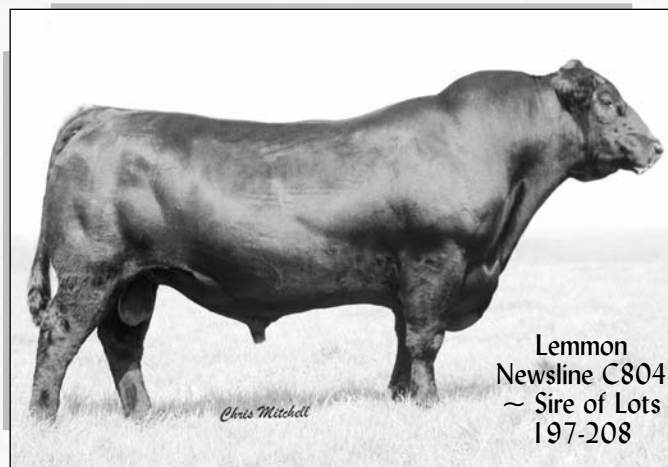
#Famous 7001
+LaGrand Lass 4995
+G A R Precision 2445

#S A F Fame
T K Karen 1369
#G A R Precision 1680
G A R Pierre 2511

Act. BW	75
Adj. WW	583
Adj. YW	
Adj. SC	
Adj. IMF	2.27
Adj. REA	15.8

CED	BW	WW	YW	Milk	SC	%IMF	RE	Fat
+7	I+.3	I+39	+74	I+21	I+.23	I+.43	I+.43	I-.023
SW (Weaning)			SF (Feedlot)	SG (Grid)		SB (Beef)		
+25.26			+18.15	+24.57		+41.22		

Ranks in the top 20% for RE
Dam posts ratios of %IMF 1@100, RE 1@100



198 LaGrand Newsline 6571

Bull: +15495429 • Tattoo: 6571 • Calved: 3/4/2006

#B/R New Design 036
+Lemmon Newsline C804
White Fence Pride H1

#V D A R New Trend 315
B/R Blackcap Empress 76
#Connealy Dateline
#Pleasant Pill of Conanga

#S S Traveler 6807 T510
+Maple Lane Forever Lady 277
+S V F Forever Lady 1120

#D H D Traveler 6807
#S S Miss Hi Spade A114
#+Skarship Saratoga
#Forever Lady 163 G D A R

Act. BW	94
Adj. WW	652
Adj. YW	
Adj. SC	
Adj. IMF	
Adj. REA	11.6

CED	BW	WW	YW	Milk	SC	%IMF	RE	Fat
I+7	I+1.6	I+43	I+85	I+22	I+.11	I-.01	I-.009	
SW (Weaning)			SF (Feedlot)	SG (Grid)		SB (Beef)		
+25.17			+28.08	+12.63		+35.70		

Ranks in the top 15% for Fat
IMF ratio 110

197 LaGrand Newsline 6667

Bull: +15495455 • Tattoo: 6667 • Calved: 4/10/2006

#B/R New Design 036
+Lemmon Newsline C804
White Fence Pride H1

#V D A R New Trend 315
B/R Blackcap Empress 76
#Connealy Dateline
#Pleasant Pill of Conanga

#S S Traveler 6807 T510
+Maple Lane Forever Lady 277
+S V F Forever Lady 1120

#D H D Traveler 6807
#S S Miss Hi Spade A114
#+Skarship Saratoga
#Forever Lady 163 G D A R

Act. BW	95
Adj. WW	638
Adj. YW	
Adj. SC	
Adj. IMF	
Adj. REA	

CED	BW	WW	YW	Milk	SC	%IMF	RE	Fat
I+7	I+1.6	I+43	I+85	I+22	I+.09	I+.09	I+.22	I-.010
SW (Weaning)			SF (Feedlot)	SG (Grid)		SB (Beef)		
+25.17			+28.08	+14.04		+37.11		

Ranks in the top 15% for Fat

199 LaGrand Newsline 6748

Bull: +15495470 • Tattoo: 6748 • Calved: 3/5/2006

#B/R New Design 036
+Lemmon Newsline C804
White Fence Pride H1

#V D A R New Trend 315
B/R Blackcap Empress 76
#Connealy Dateline
#Pleasant Pill of Conanga

#Sitz Traveler 9929
+TC Peg 7021
#TC Peg 9100

#D H D Traveler 6807
Sitz Everelda Entense 1137
#+Leachman Prompter
T C Peg 6108

Act. BW	95
Adj. WW	674
Adj. YW	
Adj. SC	
Adj. IMF	2.65
Adj. REA	12.9

CED	BW	WW	YW	Milk	SC	%IMF	RE	Fat
I+4	I+2.9	I+39	I+77	I+23	I+1.05	I-.07	I+.24	I-.033
SW (Weaning)			SF (Feedlot)	SG (Grid)		SB (Beef)		
+22.19			+21.46	+11.28		+30.09		

Ranks in the top 1% for Fat
Ranks in the top 10% for SC, CEM
Dam posts ratios of WR 4@101, YR 4@102, RE 42@101

200 LaGrand Newsline 6760

Bull: +15495476 • Tattoo: 6760 • Calved: 3/5/2006

#B/R New Design 036
+Lemmon Newsline C804
White Fence Pride H1

#V D A R New Trend 315
B/R Blackcap Express 76
#Connealy Dateline
#Pleasant Pill of Conanga

#Sitz Traveler 9929
+TC Peg 7021
#TC Peg 9100

#D H D Traveler 6807
Sitz Everelda Entense 1137
#+Leachman Prompter
T C Peg 6108

Act. BW	75
Adj. WW	604
Adj. YW	
Adj. SC	
Adj. IMF	2.56
Adj. REA	12.5

CED	BW	WW	YW	Milk	SC	%IMF	RE	Fat
I+4	I+2.9	I+39	I+77	I+23	I+1.05	I-.08	I+.20	I-.039
SW (Weaning)			SF (Feedlot)		SG (Grid)		SB (Beef)	
+22.19			+21.46		+11.09		+29.90	

Ranks in the top 1% for Fat
Ranks in the top 10% for SC, CEM
Dam posts ratios of WR 4@101, YR 4@102, RE 42@101

201 LaGrand Newsline 6750

Bull: +15495471 • Tattoo: 6750 • Calved: 3/6/2006

#B/R New Design 036
+Lemmon Newsline C804
White Fence Pride H1

#V D A R New Trend 315
B/R Blackcap Express 76
#Connealy Dateline
#Pleasant Pill of Conanga

#Sitz Traveler 9929
+TC Peg 7021
#TC Peg 9100

#D H D Traveler 6807
Sitz Everelda Entense 1137
#+Leachman Prompter
T C Peg 6108

Act. BW	96
Adj. WW	631
Adj. YW	
Adj. SC	
Adj. IMF	3.02
Adj. REA	13.9

CED	BW	WW	YW	Milk	SC	%IMF	RE	Fat
I+4	I+2.9	I+39	I+77	I+23	I+1.05	I-.03	I+.35	I-.022
SW (Weaning)			SF (Feedlot)		SG (Grid)		SB (Beef)	
+22.19			+21.46		+12.53		+31.34	

Ranks in the top 3% for Fat
Ranks in the top 10% for CEM
Dam posts ratios of WR 4@101, YR 4@102, RE 42@101
RE ratio 105

202 LaGrand Newsline 6762

Bull: +15495477 • Tattoo: 6762 • Calved: 3/6/2006

#B/R New Design 036
+Lemmon Newsline C804
White Fence Pride H1

#V D A R New Trend 315
B/R Blackcap Express 76
#Connealy Dateline
#Pleasant Pill of Conanga

#Sitz Traveler 9929
+TC Peg 7021
#TC Peg 9100

#D H D Traveler 6807
Sitz Everelda Entense 1137
#+Leachman Prompter
T C Peg 6108

Act. BW	95
Adj. WW	661
Adj. YW	
Adj. SC	
Adj. IMF	2.91
Adj. REA	13.9

CED	BW	WW	YW	Milk	SC	%IMF	RE	Fat
I+4	I+2.9	I+39	I+77	I+23	I+1.05	I-.04	I+.35	I-.014
SW (Weaning)			SF (Feedlot)		SG (Grid)		SB (Beef)	
+22.19			+21.46		+11.22		+30.03	

Ranks in the top 10% for SC, CEM, Fat
Dam posts ratios of WR 4@101, YR 4@102, RE 42@101
RE ratio 105

203 LaGrand Newsline 6757

Bull: +15495474 • Tattoo: 6757 • Calved: 3/6/2006

#B/R New Design 036
+Lemmon Newsline C804
White Fence Pride H1

#V D A R New Trend 315
B/R Blackcap Express 76
#Connealy Dateline
#Pleasant Pill of Conanga

#Sitz Traveler 9929
+TC Peg 7021
#TC Peg 9100

#D H D Traveler 6807
Sitz Everelda Entense 1137
#+Leachman Prompter
T C Peg 6108

Act. BW	89
Adj. WW	552
Adj. YW	
Adj. SC	
Adj. IMF	2.44
Adj. REA	13.6

CED	BW	WW	YW	Milk	SC	%IMF	RE	Fat
I+4	I+2.9	I+39	I+77	I+23	I+1.05	I-.09	I+.32	I-.031
SW (Weaning)			SF (Feedlot)		SG (Grid)		SB (Beef)	
+22.19			+21.46		+10.74		+29.55	

Ranks in the top 1% for Fat
Ranks in the top 10% for SC, CEM
Dam posts ratios of WR 4@101, YR 4@102, RE 42@101

204 LaGrand Newsline 6754

Bull: +15495472 • Tattoo: 6754 • Calved: 3/13/2006

#B/R New Design 036
+Lemmon Newsline C804
White Fence Pride H1

#V D A R New Trend 315
B/R Blackcap Express 76
#Connealy Dateline
#Pleasant Pill of Conanga

#Sitz Traveler 9929
+TC Peg 7021
#TC Peg 9100

#D H D Traveler 6807
Sitz Everelda Entense 1137
#+Leachman Prompter
T C Peg 6108

Act. BW	80
Adj. WW	570
Adj. YW	
Adj. SC	
Adj. IMF	3.34
Adj. REA	12.7

CED	BW	WW	YW	Milk	SC	%IMF	RE	Fat
I+4	I+2.9	I+39	I+77	I+23	I+1.05	I+.01	I+.22	I-.021
SW (Weaning)			SF (Feedlot)		SG (Grid)		SB (Beef)	
+22.19			+21.46		+12.99		+31.79	

Ranks in the top 3% for Fat
Ranks in the top 10% for SC, CEM
Dam posts ratios of WR 4@101, YR 4@102, RE 42@101
IMF ratio 116

205 LaGrand Newsline 6474

Bull: +15503935 • Tattoo: 6474 • Calved: 2/14/2006

#B/R New Design 036
+Lemmon Newsline C804
White Fence Pride H1

#V D A R New Trend 315
B/R Blackcap Express 76
#Connealy Dateline
#Pleasant Pill of Conanga

#TC Stockman 365
+Oneills Lady Blackcap 30
+Oneills Lady Blackcap

#TC Stockman
TC Pride 0014
#+Oneills Renovator
#Blackcap Lady 3187 G D A R

Act. BW	88
Adj. WW	648
Adj. YW	1011
Adj. SC	36.93
Adj. IMF	1.49
Adj. REA	14.3

CED	BW	WW	YW	Milk	SC	%IMF	RE	Fat
I+4	I+3.5	I+42	I+77	I+23	I+3.5	I-.17	I+.25	I-.033
SW (Weaning)			SF (Feedlot)		SG (Grid)		SB (Beef)	
+23.24			+20.28		+7.21		+25.91	

Ranks in the top 1% for Fat
Ranks in the top 15% for CEM
Dam posts ratios of WR 2@109, YR 2@104
WW ratio 113; YW ratio 111

206 LaGrand Newsline 6682

Bull: +15504480 • Tattoo: 6682 • Calved: 4/21/2006

#B/R New Design 036
+Lemmon Newsline C804
White Fence Pride H1

#V D A R New Trend 315
B/R Blackcap Express 76
#Connealy Dateline
#Pleasant Pill of Conanga

#Schoenes Fix It 826
+NER Queen Elba 9860
+Whitestone Queen Elba F176

#A A R New Trend
Sky High Blackbird 4119
#+Leachman Right Time
+Creek Side Queen Elba

Act. BW	90
Adj. WW	710
Adj. YW	
Adj. SC	
Adj. IMF	
Adj. REA	

CED	BW	WW	YW	Milk	SC	%IMF	RE	Fat
I+4	I+3.2	I+44	I+81	I+24	I+1.20	I-.01	I+.26	I-.005
SW (Weaning)			SF (Feedlot)		SG (Grid)		SB (Beef)	
+24.22			+23.56		+10.33		+31.13	

Ranks in the top 20% for Milk

207 LaGrand Newsline 6686

Bull: +15504483 • Tattoo: 6686 • Calved: 4/22/2006

#B/R New Design 036
+Lemmon Newsline C804
White Fence Pride H1

#V D A R New Trend 315
B/R Blackcap Express 76
#Connealy Dateline
#Pleasant Pill of Conanga

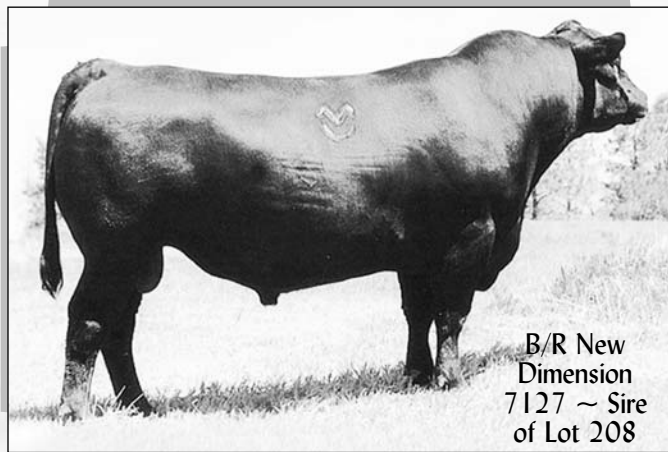
#Schoenes Fix It 826
+NER Queen Elba 9860
+Whitestone Queen Elba F176

#A A R New Trend
Sky High Blackbird 4119
#+Leachman Right Time
+Creek Side Queen Elba

Act. BW	81
Adj. WW	690
Adj. YW	
Adj. SC	
Adj. IMF	
Adj. REA	

CED	BW	WW	YW	Milk	SC	%IMF	RE	Fat
I+4	I+3.2	I+44	I+81	I+24	I+1.20	I-.01	I+.26	I-.005
SW (Weaning)			SF (Feedlot)		SG (Grid)		SB (Beef)	
+24.22			+23.56		+10.33		+31.13	

Ranks in the top 5% for SC
Ranks in the top 20% for Milk



B/R New Dimension 7127 ~ Sire of Lot 208

208 LaGrand 7127 Dimension 6917

Bull: +15643766 • Tattoo: 6917 • Calved: 1/18/2006

#B/R New Design 036 #V D A R New Trend 315
#B/R New Dimension 7127 B/R Blackcap Empress 76
B/R Ruby of Tiffany 4117 Rito 9M9 of 2036 Scotch Cap
B/R Ruby of Tiffany

#+V D A R Lucys Boy #Traveler 1148 G D A R
+Acf Blackbird 9535 +V D A R Pine Drive Lucy 5
Davis Yr Blackbird 558H #G A R Precision 1680
G A R Traveler 760

Act. BW	78
Adj. WW	622
Adj. YW	1195
Adj. SC	36.06
Adj. IMF	3.88
Adj. REA	13.3

CED	BW	WW	YW	Milk	SC	%IMF	RE	Fat
I+8	I+2.5	I+37	I+73	I+25	I-13	I+.31	I+.66	I+.001
\$W (Weaning)		\$F (Feedlot)		\$G (Grid)		\$B (Beef)		
+23.44		+18.02		+23.91		+41.84		

Ranks in the top 4% for RE
Ranks in the top 15% for %IMF
IMF ratio 120

209 LaGrand Black 6275

Bull: 15495345 • Tattoo: 6275 • Calved: 1/23/2006

#B/R New Design 036 #V D A R New Trend 315
+BAAR USA Black 2898 B/R Blackcap Empress 76
N Bar Primrose 2424 #Emulation 31 (FX)
Primrose N Bar 9962

#Whitestone Widespread MB #N Bar Emulation EXT
+LaGrand Blacklass 4986 M B Rachel 2173
+G A R Ambush 1175 #Paramont Ambush 2172
+G A R Bando 09

Act. BW	68
Adj. WW	617
Adj. YW	1062
Adj. SC	36.25
Adj. IMF	2.64
Adj. REA	13.2

CED	BW	WW	YW	Milk	SC	%IMF	RE	Fat
+10	-0.5	+41	I+71	+21	I-.33	I+.03	I+.32	I-.010
\$W (Weaning)		\$F (Feedlot)		\$G (Grid)		\$B (Beef)		
+28.64		+14.63		+13.99		+28.86		

Ranks in the top 5% for BW
Ranks in the top 10% for CED, \$W
Ranks in the top 15% for Fat
Dam posts a ratio of BR 1@84

211 LaGrand Black 6413

Bull: 15495384 • Tattoo: 6413 • Calved: 2/6/2006

#B/R New Design 036 #V D A R New Trend 315
+BAAR USA Black 2898 B/R Blackcap Empress 76
N Bar Primrose 2424 #Emulation 31 (FX)
Primrose N Bar 9962

#J L B Exacto 416 #G A R Precision 1680
+LaGrand Susanna 4740 +Brost Burgess 041
+BT Susanna 290J Top Secret 9757 E A R
Susanna of C H 3030

Act. BW	86
Adj. WW	713
Adj. YW	1207
Adj. SC	39.70
Adj. IMF	3.43
Adj. REA	13.6

CED	BW	WW	YW	Milk	SC	%IMF	RE	Fat
+4	+2.1	+47	I+81	+27	I+.09	I+.20	I+.35	I+.024
\$W (Weaning)		\$F (Feedlot)		\$G (Grid)		\$B (Beef)		
+28.59		+22.38		+15.07		+35.76		

Ranks in the top 5% for \$W
Ranks in the top 10% for Milk
Ranks in the top 20% for WW
Dam posts ratios of WR 1@114, YR 1@107, %IMF 1@109
WW ratio 114; YW ratio 107; IMF ratio 109

210 LaGrand Black 6313

Bull: 15495357 • Tattoo: 6313 • Calved: 1/27/2006

#B/R New Design 036 #V D A R New Trend 315
+BAAR USA Black 2898 B/R Blackcap Empress 76
N Bar Primrose 2424 #Emulation 31 (FX)
Primrose N Bar 9962

Summitcrest High Prime 0H29 #Gardens Prime Time
+ACF Blackbird 4090 Summitcrest Missie 2F55
+ACF Blackbird 0276 #B/R New Design 036
Davis Yr Blackbird 558H

Act. BW	74
Adj. WW	656
Adj. YW	1130
Adj. SC	38.88
Adj. IMF	3.75
Adj. REA	14.2

CED	BW	WW	YW	Milk	SC	%IMF	RE	Fat
+8	+0	+44	I+77	+26	I-.01	I+.30	I+.50	I+.004
\$W (Weaning)		\$F (Feedlot)		\$G (Grid)		\$B (Beef)		
+31.14		+19.49		+22.49		+41.12		

Ranks in the top 2% for YW, \$F
Ranks in the top 10% for WW
Ranks in the top 15% for RE
Dam posts ratios of WR 3@101, YR 3@100, RE 3@108
IMF ratio 119

212 LaGrand Black 6484

Bull: 15495406 • Tattoo: 6484 • Calved: 2/16/2006

#B/R New Design 036 #V D A R New Trend 315
+BAAR USA Black 2898 B/R Blackcap Empress 76
N Bar Primrose 2424 #Emulation 31 (FX)
Primrose N Bar 9962

#Rock D Ambush 1531 #Paramont Ambush 2172
+LaGrand Evergreen 4747 MS Blackcap Band of R D 1301
+Shady Brook Evergreen 301F #Beartooth Traveler 248
+G T Treasure 120

Act. BW	100
Adj. WW	764
Adj. YW	1263
Adj. SC	39.02
Adj. IMF	3.05
Adj. REA	14.2

CED	BW	WW	YW	Milk	SC	%IMF	RE	Fat
I+10	I+0	I+38	I+70	I+17	I+.21	I+.30	I+.008	
\$W (Weaning)		\$F (Feedlot)		\$G (Grid)		\$B (Beef)		
+25.88		+15.30		+19.40		+33.63		

Dam posts ratios of WR 1@100, YR 1@100, %IMF 1@100, RE 1@100

213 LaGrand 323 New Design 6935

Bull: Pending • Tattoo: 6935 • Calved: 3/21/2006

#B/R New Design 036 #V D A R New Trend 315
#B/R New Design 323 B/R Blackcap Empress 76
B/R Ruby of Tiffany 155 V D A R Pine Drive 251
Tiffany BR

#+Papa Equator 2928 #+Papa Power 096
+H C Black Belle 6814 #Papa Envious Blackbird 8849
#Y A Rito Black Belle 47 Rita #Rito 2100 G D A R
H 96 Black Belle 442

Act. BW	84
Adj. WW	619
Adj. YW	950
Adj. SC	35.00
Adj. IMF	1.74
Adj. REA	11.6

CED	BW	WW	YW	Milk	SC	%IMF	RE	Fat
+5	+2.6	+40	+78	+25	+0.33	+0.08	+0.33	-0.002
\$W (Weaning)		\$F (Feedlot)		\$G (Grid)		\$B (Beef)		
+23.72		+22.08		+24.20		+42.52		

Ranks in the top 2% for YW, \$F
Ranks in the top 10% for WW
Ranks in the top 15% for RE
Dam posts ratios of WR 3@101, YR 3@100, RE 3@108
IMF ratio 119

214 LaGrand 323 New Design 6937

Bull: Pending • Tattoo: 6937 • Calved: 3/13/2006

#B/R New Design 036 #V D A R New Trend 315
#B/R New Design 323 B/R Blackcap Empress 76
B/R Ruby of Tiffany 155 V D A R Pine Drive 251
Tiffany BR

#+Papa Equator 2928 #+Papa Power 096
+H C Black Belle 6814 #Papa Envious Blackbird 8849
#Y A Rito Black Belle 47 Rita #Rito 2100 G D A R
H 96 Black Belle 442

Act. BW	80
Adj. WW	680
Adj. YW	1050
Adj. SC	40.00
Adj. IMF	2.27
Adj. REA	15.3

CED	BW	WW	YW	Milk	SC	%IMF	RE	Fat
+5	+2.6	+40	+78	+25	+0.33	+0.07	+0.45	+0.04
\$W (Weaning)		\$F (Feedlot)		\$G (Grid)		\$B (Beef)		
+23.72		+22.08		+24.20		+42.52		

Ranks in the top 2% for YW, \$F
Ranks in the top 10% for WW
Ranks in the top 15% for RE
Dam posts ratios of WR 3@101, YR 3@100, RE 3@108
IMF ratio 119

215 LaGrand 0640 New Design 6863

Bull: 15495495 • Tattoo: 6863 • Calved: 2/17/2006

#B/R New Design 036
Thomas New Design 0640
#Thomas Blackcap 7486

#V D A R New Trend 315
B/R Blackcap Empress 76
#R R Scotchcap 9440
Thomas Blackcap 3277

#Famous 7001
+LaGrand Lady 2583
Donamere Lady 2743

#S A F Fame
T K Karen 1369
#Krugerrand of Donamere 490
Donamere Lady 209

Act. BW	97
Adj. WW	748
Adj. YW	1236
Adj. SC	40.21
Adj. IMF	2.55
Adj. REA	14.8

CED	BW	WW	YW	Milk	SC	%IMF	RE	Fat
+4	+3.9	+54	+94	+24	+41	-1.02	+31	-1.012
\$W (Weaning)		\$F (Feedlot)		\$G (Grid)			\$B (Beef)	
+25.96		+33.03		+9.87			+37.07	

Ranks in the top 4% for WW
Ranks in the top 10% for YW, Fat, \$F
Ranks in the top 15% for CEM
Ranks in the top 20% for Milk
Dam posts ratios of BR 3@98, WR 3@108, YR 3@105, %IMF 3@105
WW ratio 114; YW ratio 111; RE ratio 111

216 LaGrand 0640 New Design 6648

Bull: 15495448 • Tattoo: 6648 • Calved: 3/28/2006

#B/R New Design 036
Thomas New Design 0640
#Thomas Blackcap 7486

#V D A R New Trend 315
B/R Blackcap Empress 76
#R R Scotchcap 9440
Thomas Blackcap 3277

#Papa Universe 515
LaGrand Katinka 2436
#+Harmony Hill Katinka 441

#Papa Equator 2928
PLD Eriskay Papa 011
#+G A R Sleep Easy 1009
Harmony Hill Katinka 229

Act. BW	91
Adj. WW	700
Adj. YW	1236
Adj. SC	
Adj. IMF	
Adj. REA	

CED	BW	WW	YW	Milk	SC	%IMF	RE	Fat
+3	+4.1	+53	+89	+27	+20	+32	-1.011	
\$W (Weaning)		\$F (Feedlot)		\$G (Grid)			\$B (Beef)	
+26.71		+28.21		+18.32			+43.01	

Ranks in the top 5% for WW
Ranks in the top 10% for Milk
Ranks in the top 15% for YW, Fat, \$B
Ranks in the top 20% for \$W, \$F
Dam posts ratios of WR 2@112, YR 1@192, %IMF 1@109
WW ratio 116

217 LaGrand 2603 New Design 6552

Bull: 15495425 • Tattoo: 6552 • Calved: 2/27/2006

#B/R New Design 323
+La Grand Roth New Design 2603
+Bear MTN Forever Lady 601

#B/R New Design 036
B/R Ruby of Tiffany 155
#Papa Equator 2928
#Blackcap Lady 384 G D A R

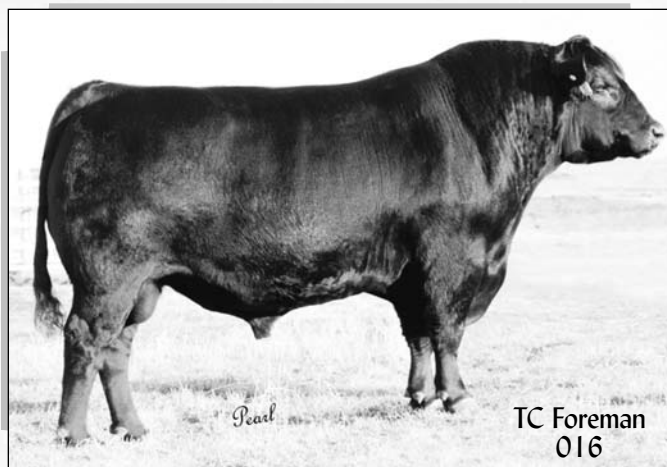
#+S A F 598 Bando 5175
+LaGrand Rita 3764
#Rita 415 of 1G24 6807

#Bon View Bando 598
+S A F Royal Lass 1002
#D H D Traveler 6807
L B 8E8 Emulation Lucy 211

Act. BW	96
Adj. WW	660
Adj. YW	1209
Adj. SC	38.87
Adj. IMF	3.13
Adj. REA	13.2

CED	BW	WW	YW	Milk	SC	%IMF	RE	Fat
+2	+4.0	+44	+84	+22	+36	+1.14	+08	-1.001
\$W (Weaning)		\$F (Feedlot)		\$G (Grid)			\$B (Beef)	
+21.33		+26.65		+13.62			+36.18	

Dam posts ratios of WR 2@111, YR 2@110, %IMF 2@105, RE 2@101
WW ratio 106; YW ratio 108



218 LaGrand 2603 New Design 6560

Bull: 15495427 • Tattoo: 6560 • Calved: 3/2/2006

#B/R New Design 323
+La Grand Roth New Design 2603
+Bear MTN Forever Lady 601

#B/R New Design 036
B/R Ruby of Tiffany 155
#Papa Equator 2928
#Blackcap Lady 384 G D A R

#B/R New Design 036
Roth Polly 2101
+Roth Polly 9509

#V D A R New Trend 315
B/R Blackcap Empress 76
#V D A R Bando 701
+V D A R Polly 4013

Act. BW	80
Adj. WW	599
Adj. YW	999
Adj. SC	39.63
Adj. IMF	3.13
Adj. REA	12.3

CED	BW	WW	YW	Milk	SC	%IMF	RE	Fat
+7	+2.0	+35	+64	+23	+50	+1.15	+19	-1.014
\$W (Weaning)		\$F (Feedlot)		\$G (Grid)			\$B (Beef)	
+24.65		+10.00		+18.70			+28.70	

Ranks in the top 10% for Fat
Dam posts ratios of WR 3@101, YR 3@100, RE 3@108



219 LaGrand 2603 New Design 6576

Bull: 15495431 • Tattoo: 6576 • Calved: 3/5/2006

#B/R New Design 323
+La Grand Roth New Design 2603
+Bear MTN Forever Lady 601

#B/R New Design 036
B/R Ruby of Tiffany 155
#Papa Equator 2928
#Blackcap Lady 384 G D A R

+LCC Big River 3499J
+LaGrand Eriskay 3649
Clearwater Eriskay J 1069

#Leachman Saugahatchee 3000C
Bon View Pride 664
#+G D A R Rolls Royce 203
Clearwater Eriskay J 1244

Act. BW	90
Adj. WW	643
Adj. YW	
Adj. SC	
Adj. IMF	3.91
Adj. REA	14.1

CED	BW	WW	YW	Milk	SC	%IMF	RE	Fat
+4	+3.9	+41	+76	+22	+19	+36	+016	
\$W (Weaning)		\$F (Feedlot)		\$G (Grid)			\$B (Beef)	
+21.47		+19.66		+16.43			+34.58	

Dam posts ratios of 2@107, %IMF 1@125, RE 1@102
IMF ratio 125

220 LaGrand Foreman 606 I

Bull: 15495272 • Tattoo: 6061 • Calved: 1/5/2006

#Connealy Forefront
TC Foreman 016
#TC Pride 8067

#Connealy Frontline
Eileen Heartland Cononga6443
#TC Dividend 963
TC Pride 6093

Whitestone Precision H141
+LaGrand Butterfly 4945
+Diablo Butter Fly 54

#G A R Precision 1680
+Rita 3X11 of Rita OFB4 Ext
#TC Stockman
+Diablo Foxy Fire Fly 279

Act. BW	74
Adj. WW	726
Adj. YW	1273
Adj. SC	40.67
Adj. IMF	3.84
Adj. REA	14.7

CED	BW	WW	YW	Milk	SC	%IMF	RE	Fat
+7	+1.5	+52	+95	+16	+45	+1.10	+31	-1.026
\$W (Weaning)		\$F (Feedlot)		\$G (Grid)			\$B (Beef)	
+26.83		+34.90		+15.61			+42.16	

Ranks in the top 2% for Fat
Ranks in the top 10% for WW, YW, \$F
Ranks in the top 15% for \$B
Dam posts ratios of BR 1@88, WR 1@105, YR 1@106, %IMF 1@119, RE 1@104
WW ratio 105; YW ratio 106; IMF ratio 119



224 LaGrand Foreman 6071

Bull: 15495277 • Tattoo: 6071 • Calved: 1/6/2006

#Connealy Forefront
TC Foreman 016
#TC Pride 8067

#Connealy Frontline
Eileen Heartland Conanga6443
#TC Dividend 963
TC Pride 6093

Whitestone Precision H141
+LaGrand Pride Lucy H415
Hyline Pride Lucy 611

#G A R Precision 1680
+Rita 3X11 of Rita OFB4 Ext
#Hyline New Trend 382
Hyline Lucy 442

Act. BW
74
Adj. WW
713
Adj. YW
1217
Adj. SC
40.71
Adj. IMF
2.79
Adj. REA
13.2

CED	BW	WW	YW	Milk	SC	%IMF	RE	Fat
+8	+1.0	+53	I+94	+20	I+48	I-.06	I+.24	I-.012
SW (Weaning)			SF (Feedlot)		SG (Grid)		SB (Beef)	
+29.85			+33.44		+8.74		+34.38	

Ranks in the top 5% for WW, \$W
Ranks in the top 10% for YW, Fat
Ranks in the top 15% for CEM, SF
Ranks in the top 20% for CED, BW
Dam posts ratios of BR 1@91, WR 1@114, YR 1@108
WW ratio 114; YW ratio 108

225 LaGrand Foreman 6075

Bull: 15495279 • Tattoo: 6075 • Calved: 1/6/2006

#Connealy Forefront
TC Foreman 016
#TC Pride 8067

#Connealy Frontline
Eileen Heartland Conanga6443
#TC Dividend 963
TC Pride 6093

#R P 3RD Bushwacker
+BV&M Pride 1492
#Bon View Pride 1551

#B C C Bushwacker 41-93
L B Queen of Spades
Bon View Paragon 2108
Bon View Pride 639

Act. BW
88
Adj. WW
673
Adj. YW
1167
Adj. SC
38.87
Adj. IMF
3.27
Adj. REA
14.8

CED	BW	WW	YW	Milk	SC	%IMF	RE	Fat
+5	+1.3	+44	I+80	+20	I+23	I+.02	I+.25	I-.021
SW (Weaning)			SF (Feedlot)		SG (Grid)		SB (Beef)	
+27.05			+22.54		+13.48		+32.75	

Ranks in the top 3% for Fat
Ranks in the top 15% for CEM
Ranks in the top 20% for \$W
Dam posts ratios of BR 3@97, WR 3@102, RE 3@101

226 LaGrand Foreman 6118

Bull: 15495299 • Tattoo: 6118 • Calved: 1/9/2006 • Twin w/Bull

#Connealy Forefront
TC Foreman 016
#TC Pride 8067

#Connealy Frontline
Eileen Heartland Conanga6443
#TC Dividend 963
TC Pride 6093

Whitestone Precision H141
+LaGrand Pride Lucy H414
Hyline Pride Lucy 611

#G A R Precision 1680
+Rita 3X11 of Rita OFB4 Ext
#Hyline New Trend 382
Hyline Lucy 442

Act. BW
50
Adj. WW
586
Adj. YW
956
Adj. SC
35.8
Adj. IMF
3.19
Adj. REA
12.6

CED	BW	WW	YW	Milk	SC	%IMF	RE	Fat
+10	+4	+53	I+95	+17	I+.55	I+.02	I+.14	I-.007
SW (Weaning)			SF (Feedlot)		SG (Grid)		SB (Beef)	
+29.00			+34.49		+8.73		+35.02	

Ranks in the top 10% for Fat

227 LaGrand Foreman 6120

Bull: 15495300 • Tattoo: 6120 • Calved: 1/9/2006 • Twin w/Bull

#Connealy Forefront
TC Foreman 016
#TC Pride 8067

#Connealy Frontline
Eileen Heartland Conanga6443
#TC Dividend 963
TC Pride 6093

Whitestone Precision H141
+LaGrand Pride Lucy H414
Hyline Pride Lucy 611

#G A R Precision 1680
+Rita 3X11 of Rita OFB4 Ext
#Hyline New Trend 382
Hyline Lucy 442

Act. BW
54
Adj. WW
576
Adj. YW
1066
Adj. SC
35.8
Adj. IMF
2.92
Adj. REA
13.1

CED	BW	WW	YW	Milk	SC	%IMF	RE	Fat
+9	+1.5	+49	I+91	+15	I+.45	I+.26	I+.14	I-.017
SW (Weaning)			SF (Feedlot)		SG (Grid)		SB (Beef)	
+25.67			+31.91		+18.64		+43.62	

Ranks in the top 10% for Fat

221 LaGrand Foreman 6090

Bull: 15495286 • Tattoo: 6090 • Calved: 1/8/2006

#Connealy Forefront
TC Foreman 016
#TC Pride 8067

#Connealy Frontline
Eileen Heartland Conanga6443
#TC Dividend 963
TC Pride 6093

Whitestone Precision H141
+LaGrand Butterfly 4932
+Diablo Butter Fly 108

#G A R Precision 1680
+Rita 3X11 of Rita OFB4 Ext
#+Gdar SVF Russ 184B
+Diablo Butter Fly 54

Act. BW
83
Adj. WW
708
Adj. YW
1255
Adj. SC
41.77
Adj. IMF
3.03
Adj. REA
15.8

CED	BW	WW	YW	Milk	SC	%IMF	RE	Fat
+6	+2.7	+51	I+97	+16	I+.58	I+.0	I+.43	I-.009
SW (Weaning)			SF (Feedlot)		SG (Grid)		SB (Beef)	
+23.44			+37.43		+10.97		+38.38	

Ranks in the top 5% for YW
Ranks in the top 10% for WW, \$F
Ranks in the top 15% for Fat
Ranks in the top 20% for RE
Dam posts ratios of BR 1@98, WR 1@102, YR 1@104, RE 1@111
RE ratio 111

222 LaGrand Foreman 6014

Bull: 15495263 • Tattoo: 6014 • Calved: 12/31/2005

#Connealy Forefront
TC Foreman 016
#TC Pride 8067

#Connealy Frontline
Eileen Heartland Conanga6443
#TC Dividend 963
TC Pride 6093

#Connealy Freightliner
+LaGrand Pride 3129
+Roth Pride 2662

#Bon View Bando 598
Joana Erica of Conanga
#Papa Equator 2928
Bon View Pride 316

Act. BW
70
Adj. WW
745
Adj. YW
1215
Adj. SC
41.51
Adj. IMF
3.19
Adj. REA
13.9

CED	BW	WW	YW	Milk	SC	%IMF	RE	Fat
+10	+4	+53	I+95	+17	I+.55	I+.02	I+.14	I-.007
SW (Weaning)			SF (Feedlot)		SG (Grid)		SB (Beef)	
+29.00			+34.49		+8.73		+35.02	

Ranks in the top 10% for CED, YW, \$W, \$F
Ranks in the top 15% for BW
Ranks in the top 20% for Fat
Dam posts ratios of BR 1@83, WR 1@108, YR 1@101
WW ratio 108

223 LaGrand Foreman 6070

Bull: 15495276 • Tattoo: 6070 • Calved: 1/6/2006

#Connealy Forefront
TC Foreman 016
#TC Pride 8067

#Connealy Frontline
Eileen Heartland Conanga6443
#TC Dividend 963
TC Pride 6093

Whitestone Precision H141
+LaGrand Butterfly 4953
+Diablo Butter Fly 54

#G A R Precision 1680
+Rita 3X11 of Rita OFB4 Ext
#TC Stockman
+Diablo Foxy Fire Fly 279

Act. BW
74
Adj. WW
684
Adj. YW
1212
Adj. SC
40.71
Adj. IMF
4.54
Adj. REA
12.2

CED	BW	WW	YW	Milk	SC	%IMF	RE	Fat
+9	+1.5	+49	I+91	+15	I+.45	I+.26	I+.14	I-.017
SW (Weaning)			SF (Feedlot)		SG (Grid)		SB (Beef)	
+25.67			+31.91		+18.64		+43.62	

Ranks in the top 5% for Fat
Ranks in the top 10% for CEM
Ranks in the top 15% for CED, WW, YW, \$F, \$B
Dam posts ratios of BR 1@88 YR 1@101, %IMF 1@141
IMF ratio 141

228 LaGrand Foreman 6205

Bull: 15495326 • Tattoo: 6205 • Calved: 1/16/2006

#Connealy Forefront
TC Foreman 016
#TC Pride 8067

#Connealy Frontline
Eileen Heartland Conanga6443
#TC Dividend 963
TC Pride 6093

#Famous 7001
LaGrand Lady 3761
Donamere Lady 2743

#S A F Fame
T K Karen 1369
#Krugerrand of Donamere 490
Donamere Lady 209

Act. BW	84
Adj. WW	720
Adj. YW	1277
Adj. SC	39.52
Adj. IMF	2.92
Adj. REA	13.6

CED	BW	WW	YW	Milk	SC	%IMF	RE	Fat
+6	+2.5	+49	+89	+18	+31	-0.7	+1.12	-1.009
SW (Weaning)			SF (Feedlot)		SG (Grid)		SB (Beef)	
+25.12			+29.82		+7.44		+31.76	

Ranks in the top 15% for WW, YR, Fat
Ranks in the top 20% for SF
Dam posts ratios of BR 2@98, WR 2@104, YR 1@106
YW ratio 106

229 LaGrand Foreman 6817

Bull: 15495480 • Tattoo: 6817 • Calved: 1/16/2006

#Connealy Forefront
TC Foreman 016
#TC Pride 8067

#Connealy Frontline
Eileen Heartland Conanga6443
#TC Dividend 963
TC Pride 6093

#Famous 7001
Roth Empress 1168
+Roth Empress 8028

#S A F Fame
T K Karen 1369
#Rito 3B17 of 0G10 Bando
+D F Empress 6015

Act. BW	77
Adj. WW	777
Adj. YW	1259
Adj. SC	41.03
Adj. IMF	2.45
Adj. REA	13.5

CED	BW	WW	YW	Milk	SC	%IMF	RE	Fat
-1	+4.4	+52	+90	+19	+52	-0.5	+1.42	+0.06
SW (Weaning)			SF (Feedlot)		SG (Grid)		SB (Beef)	
+22.97			+29.66		+8.36		+32.81	

Ranks in the top 10% for WW
Ranks in the top 15% for YW
Ranks in the top 20% for RE, SF
Dam posts ratios of WR 2@112, YR 2@109, RE 3@113
WW ratio 119; YW ratio 113

230 LaGrand Foreman 6404

Bull: 15495383 • Tattoo: 6404 • Calved: 2/5/2006

#Connealy Forefront
TC Foreman 016
#TC Pride 8067

#Connealy Frontline
Eileen Heartland Conanga6443
#TC Dividend 963
TC Pride 6093

Whitstone Precision H141
+LaGrand Coquette Pride 3738
Andora Coquette Pride 644

#G A R Precision 1680
+Rita 3X11 of Rita 0FB4 Ext
Hoff Balancer S C 7109
Andora Coquette Pride 861

Act. BW	74
Adj. WW	711
Adj. YW	1153
Adj. SC	40.16
Adj. IMF	2.43
Adj. REA	13.9

CED	BW	WW	YW	Milk	SC	%IMF	RE	Fat
+10	+5	+50	+90	+18	+39	-0.9	+1.28	-1.017
SW (Weaning)			SF (Feedlot)		SG (Grid)		SB (Beef)	
+28.82			+30.46		+8.29		+32.97	

Ranks in the top 5% for Fat
Ranks in the top 10% for CED, WW, CEM, SW
Ranks in the top 15% for BW, YW, SF
Dam posts ratios of WR 2@106, YR 2@104

231 LaGrand 8702 Tradition 6741

Bull: +15612578 • Tattoo: 6741 • Calved: 1/13/2006

CED	BW	WW	YW	Milk	SC	%IMF	RE	Fat
-2	+5.1	+52	+89	+21	+49	-0.2	+1.61	+0.02
SW (Weaning)			SF (Feedlot)		SG (Grid)		SB (Beef)	
+22.78			+28.62		+11.23		+35.05	

Ranks in the top 10% for WW, RE
Ranks in the top 15% for YW
Ranks in the top 20% for SF
Dam posts ratios of WR 6@107, YR 4@102, %IMF 19@105
RE ratio 108

Act. BW	91
Adj. WW	662
Adj. YW	1153
Adj. SC	40.90
Adj. IMF	2.62
Adj. REA	15.1

232 LaGrand 8702 Tradition 6739

Bull: +15495469 • Tattoo: 6739 • Calved: 1/10/2006

CED	BW	WW	YW	Milk	SC	%IMF	RE	Fat
-2	+5.1	+52	+89	+21	+47	-0.6	+1.36	+0.015
SW (Weaning)			SF (Feedlot)		SG (Grid)		SB (Beef)	
+22.47			+28.62		+6.65		+30.48	

Ranks in the top 10% WW
Ranks in the top 15% for YW
Ranks in the top 20% for SF
Dam posts ratios of WR 6@107, YR 4@102, %IMF 19@105

Act. BW	102
Adj. WW	677
Adj. YW	1153
Adj. SC	40.81
Adj. IMF	2.19
Adj. REA	12.9

#Vermilion Dateline 7078
Sitz Tradition RLS 8702
+R L S Eisa Evergreen 5018

#Connealy Dateline
#Vermilion Blackbird 5044
#Sitz Alliance 6595
R L S Eisa Evergreen 1078

#Bon View Emulation Ext 473
#Bon View Katinka 1346
Bon View Katinka 811

#N Bar Emulation EXT
Bon View Ruth 808
#Scotch Cap
#Bon View Katinka 827

233 LaGrand 8702 Tradition 6709

Bull: +15503776 • Tattoo: 6709 • Calved: 1/7/2006

CED	BW	WW	YW	Milk	SC	%IMF	RE	Fat
-2	+4.4	+49	+86	+23	+72	+0	+1.60	+1.009
SW (Weaning)			SF (Feedlot)		SG (Grid)		SB (Beef)	
+23.50			+26.71		+11.74		+34.56	

Ranks in the top 10% for RE
Ranks in the top 15% for WW
Ranks in the top 20% for YW
Dam posts ratios of 3@107, YR 2@102, RE 6@103

Act. BW	80
Adj. WW	594
Adj. YW	1153
Adj. SC	40.71
Adj. IMF	2.30
Adj. REA	13.9

234 LaGrand 8702 Tradition 6713

Bull: +15503777 • Tattoo: 6713 • Calved: 1/8/2006

CED	BW	WW	YW	Milk	SC	%IMF	RE	Fat
-2	+4.4	+49	+86	+23	+61	+1.3	+1.54	+0.013
SW (Weaning)			SF (Feedlot)		SG (Grid)		SB (Beef)	
+23.43			+26.71		+15.33		+38.15	

Ranks in the top 10% for RE
Ranks in the top 15% for WW
Ranks in the top 20% for YW
Dam posts ratios of WR 3@107, YR 2@102, RE 6@103
IMF ratio 118

Act. BW	87
Adj. WW	635
Adj. YW	1153
Adj. SC	39.74
Adj. IMF	3.47
Adj. REA	13.4

#Vermilion Dateline 7078
Sitz Tradition RLS 8702
+R L S Eisa Evergreen 5018

#Connealy Dateline
#Vermilion Blackbird 5044
#Sitz Alliance 6595
R L S Eisa Evergreen 1078

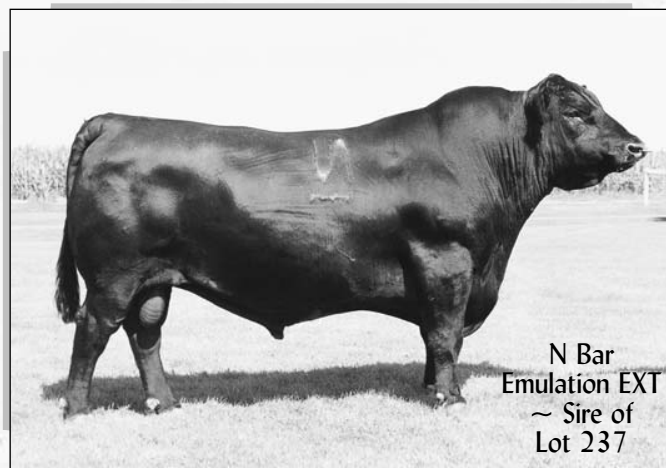
#G A R Precision 1680
+Roth Karen 1080
T K Karen 1369

#Tehama Bando 155
9J9 G A R 856
#A A R New Trend
#V D A R Karen 978





Leachman
Right Time ~
Sire of Lots
235-236



N Bar
Emulation EXT
~ Sire of
Lot 237



Lot 235

235 LaGrand Right Time 6940

Bull: Pending • Tattoo: 6940 • Calved: 3/18/2006

#N Bar Emulation EXT
#Leachman Right Time
Leachman Erica 0025

#Emulation N Bar 5522
N Bar Primrose 2424
#Tehama Bando 155
Leachman Erica 8058

#Oneills Duke
Bear Mtn Lady Eraline 302
+Oneills Eraline 100

+R&J Milky Way 1406
Oneills Delia 465
#Premier Independence K N
#Oneills Eraline 42

Act. BW	88
Adj. WW	667
Adj. YW	1050
Adj. SC	40.0
Adj. IMF	3.56
Adj. REA	12.4

CED	BW	WW	YW	Milk	SC	%IMF	RE	Fat
+2	+3.4	+44	+82	+20	-0.13	+0.03	+0.24	+0.020
SW (Weaning)		SF (Feedlot)		SG (Grid)		SB (Beef)		
+22.35		+24.59		+10.76		+34.70		

237 LaGrand EXT 6914

Bull: +15625137 • Tattoo: 6914 • Calved: 2/10/2006

#Emulation N Bar 5522
#N Bar Emulation EXT
N Bar Primrose 2424

#Emulation 31 (FX)
Ankony 8F78 Lass 8F275
#Emulation 31 (FX)
Primrose N Bar 9962

#Oneills Duke
Bear MTN Lady Eraline 302
+Oneills Eraline 100

+R&J Milky Way 1406
Oneills Delia 465
#Premier Independence K N
#Oneills Eraline 42

Act. BW	99
Adj. WW	680
Adj. YW	1159
Adj. SC	40.96
Adj. IMF	2.45
Adj. REA	13.9

CED	BW	WW	YW	Milk	SC	%IMF	RE	Fat
I+2	I+3.2	I+44	I+81	I+20	I-38	I+.03	I+.41	I+.026
SW (Weaning)		SF (Feedlot)		SG (Grid)		SB (Beef)		
+23.32		+23.56		+10.10		+31.83		

Ranks in the top 15% for CEM
RE ratio 106

238 LaGrand 420 EXT6477

Bull: 15495404 • Tattoo: 6477 • Calved: 2/15/2006

#N Bar Emulation EXT
+Lazy H Bar EXT 420
+Maple Lane Forever Lady 780

#Emulation N Bar 5522
N Bar Primrose 2424
#A A R New Trend
+S V F Forever Lady 1120

#G D A R Traveler 9161
P F 9161 Evelyn 9055
Beamans Evelyn 4596

#D H D Traveler 6807
#G D A R Sapphire 728
#Leachman Saugahatchee 3000C
Beamans Evelyn 3292

Act. BW	95
Adj. WW	601
Adj. YW	1159
Adj. SC	40.96
Adj. IMF	3.08
Adj. REA	15.0

CED	BW	WW	YW	Milk	SC	%IMF	RE	Fat
+2	+4.0	+38	I+76	+23	I+13	I+0	I+.47	I+.003
SW (Weaning)		SF (Feedlot)		SG (Grid)		SB (Beef)		
+19.39		+20.84		+12.05		+30.09		

Ranks in the top 15% for RE
Dam posts ratios of BR 6@93, WR 6@100, YR 5@100, %IMF 5@1003, RE 5@111
RE ratio 109

236 LaGrand Right Time 6934

Bull: Pending • Tattoo: 6934 • Calved: 3/24/2006

#N Bar Emulation EXT
#Leachman Right Time
Leachman Erica 0025

#Emulation N Bar 5522
N Bar Primrose 2424
#Tehama Bando 155
Leachman Erica 8058

#Oneills Duke
Bear Mtn Lady Eraline 302
+Oneills Eraline 100

+R&J Milky Way 1406
Oneills Delia 465
#Premier Independence K N
#Oneills Eraline 42

Act. BW	84
Adj. WW	645
Adj. YW	925
Adj. SC	38.0
Adj. IMF	2.69
Adj. REA	13.0

CED	BW	WW	YW	Milk	SC	%IMF	RE	Fat
+2	+3.4	+44	+82	+20	-0.13	+0.03	+0.24	+0.020
SW (Weaning)		SF (Feedlot)		SG (Grid)		SB (Beef)		
+22.35		+24.59		+10.76		+34.70		

239 LaGrand 2705 EXT6853

Bull: 15495492 • Tattoo: 6853 • Calved: 2/9/2006

#N Bar Emulation EXT
+La Grand Roth EXT 2705
+Bear MTN Forever Lady 601

#Emulation N Bar 5522
N Bar Primrose 2424
#Papa Equator 2928
#Blackcap Lady 384 G D A R

#Schurrtop Supreme
Roth Ellen 1055
+North Fork Ellen 6047

#V D A R New Trend 315
Schurrtop Pam 3449
#Hyline Travel Agent
#Hyline Ellen 9062

Act. BW	88
Adj. WW	639
Adj. YW	1125
Adj. SC	36.80
Adj. IMF	2.58
Adj. REA	14.0

CED	BW	WW	YW	Milk	SC	%IMF	RE	Fat
+5	+3.0	+43	I+75	+13	I-33	I-.03	I+.15	I+.033
SW (Weaning)		SF (Feedlot)		SG (Grid)		SB (Beef)		
+22.08		+17.86		+4.24		+21.53		

Dam posts ratios of BR 3@95, %IMF 2@102
RE ratio 105

240 LaGrand 2705 EXT 6859

Bull: 15495493 • Tattoo: 6859 • Calved: 2/11/2006

#N Bar Emulation EXT
+La Grand Roth EXT 2705
+Bear MTN Forever Lady 601

#Emulation N Bar 5522
N Bar Primrose 2424
#Papa Equator 2928
#Blackcap Lady 384 G D A R

#Millcreek Diversity
+Roth Katinka 1407
Bon View Katinka 1807

#+G A R Sleep Easy 1009
Millcreek Travel Lass
#B/R New Design 036
Bon View Katinka 764

Act. BW	94
Adj. WW	673
Adj. YW	1067
Adj. SC	38.86
Adj. IMF	3.77
Adj. REA	11.5

CED	BW	WW	YW	Milk	SC	%IMF	RE	Fat
+4	+3.2	+46	I+74	+17	I+.08	I+.17	I-.18	I+.015
\$W (Weaning)		\$F (Feedlot)		\$G (Grid)			\$B (Beef)	
+25.41		+15.69		+11.21			+27.82	

Dam posts ratios of BR 3@92, %IMF 3@112
IMF ratio 134

244 LaGrand 2705 EXT 6876

Bull: 15495499 • Tattoo: 6876 • Calved: 2/28/2006

#N Bar Emulation EXT
+La Grand Roth EXT 2705
+Bear MTN Forever Lady 601

#Famous 7001
Roth Erica 2251
Ext Erica 16 223 SHF

#Emulation N Bar 5522
N Bar Primrose 2424
#Papa Equator 2928
#Blackcap Lady 384 G D A R

#S A F Fame
T K Karen 1369
#N Bar Emulation EXT
C H Ideal Erica 16 419 SHF

Act. BW	99
Adj. WW	703
Adj. YW	1146
Adj. SC	39.56
Adj. IMF	2.23
Adj. REA	13.2

CED	BW	WW	YW	Milk	SC	%IMF	RE	Fat
-1	+4.7	+47	I+77	+16	I+.32	I-.02	I+.07	I+.019
\$W (Weaning)		\$F (Feedlot)		\$G (Grid)			\$B (Beef)	
+21.70		+18.32		+5.64			+24.18	

Ranks in the top 20% for WW
Dam posts ratios of WR 3@102, YR 3@104, RE 3@103
WW ratio 107

241 LaGrand 2705 EXT 6860

Bull: 15495494 • Tattoo: 6860 • Calved: 2/11/2006

#N Bar Emulation EXT
+La Grand Roth EXT 2705
+Bear MTN Forever Lady 601

#Emulation N Bar 5522
N Bar Primrose 2424
#Papa Equator 2928
#Blackcap Lady 384 G D A R

#+S A F 598 Bando 5175
#R&D Miss Bando 5175-03
Landmark Blackbird 3

#Bon View Bando 598
+S A F Royal Lass 1002
Landmark Handy Man
Landmark Miss El Pine 851

Act. BW	93
Adj. WW	695
Adj. YW	1135
Adj. SC	39.83
Adj. IMF	2.38
Adj. REA	13.1

CED	BW	WW	YW	Milk	SC	%IMF	RE	Fat
+4	+2.8	+43	I+71	+21	I+.14	I-.01	I+.03	I+.028
\$W (Weaning)		\$F (Feedlot)		\$G (Grid)			\$B (Beef)	
+26.17		+13.86		+5.13			+19.95	

Dam posts ratios of BR 4@94, WR 5@107, YR 4@101
WW ratio 106

245 LaGrand 2705 EXT 6904

Bull: Pending • Tattoo: 6904 • Calved: 4/1/2006

#N Bar Emulation EXT
+La Grand Roth EXT 2705
+Bear MTN Forever Lady 601

#J L B Exacto 416
+Roth Blackbird 2709
VAF Vantage Blackbird 692

#Emulation N Bar 5522
N Bar Primrose 2424
#Papa Equator 2928
#Blackcap Lady 384 G D A R

#G A R Precision 1680
+Brost Burgess 041
S V F Bandolier
Ponderosa Blackbird 922

Act. BW	93
Adj. WW	750
Adj. YW	1000
Adj. SC	37.0
Adj. IMF	3.17
Adj. REA	12.2

CED	BW	WW	YW	Milk	SC	%IMF	RE	Fat
+4	+3.3	+49	I+82	+24	+0.02	+0.05	+0.27	+0.019
\$W (Weaning)		\$F (Feedlot)		\$G (Grid)			\$B (Beef)	
+26.96		+22.61		+8.67			+31.05	

242 LaGrand 2705 EXT 6870

Bull: 15495497 • Tattoo: 6870 • Calved: 2/21/2006

#N Bar Emulation EXT
+La Grand Roth EXT 2705
+Bear MTN Forever Lady 601

#Emulation N Bar 5522
N Bar Primrose 2424
#Papa Equator 2928
#Blackcap Lady 384 G D A R

#Rockn D Ambush 1531
Roth Lassie 2153
Jolly R Lassie 374E

#Paramont Ambush 2172
MS Blackcap Band of R D 1301
Sitz Cornhusker 6662
Jolly R Lassie 9153

Act. BW	90
Adj. WW	647
Adj. YW	1220
Adj. SC	39.34
Adj. IMF	2.22
Adj. REA	12.7

CED	BW	WW	YW	Milk	SC	%IMF	RE	Fat
+4	+2.8	+40	I+79	+13	I+.08	I+.06	I+.02	I+.028
\$W (Weaning)		\$F (Feedlot)		\$G (Grid)			\$B (Beef)	
+19.42		+23.10		+6.68			+26.57	

Dam posts ratios of BR 3@94, YR 2@108, RE 2@101
YW ratio 110

246 LaGrand 3043 Big River 6502

Bull: 15495410 • Tattoo: 6502 • Calved: 2/18/2006

+LCC Big River 3499J
LaGrand Big River 3043
#Andora Coquette Pride 1285

+W C C Special Design L309
LaGrand Everelda Entense 245
+FV Everelda Entense 1494

#Leachman Saugahatchee 3000C
Bon View Pride 664
#N Bar Emulation EXT
#Andora Coquette Pride 932

#Bon View New Design 878
N Bar Primrose 2424
#Bon View Bando 598
+Sitz Everelda Entense 2636

Act. BW	106
Adj. WW	742
Adj. YW	1334
Adj. SC	4.68
Adj. IMF	14.4

CED	BW	WW	YW	Milk	SC	%IMF	RE	Fat
-2	+5.2	+47	I+91	+24	I+.29	I+.27	I+.047	
\$W (Weaning)		\$F (Feedlot)		\$G (Grid)			\$B (Beef)	
+19.37		+32.73		+12.55			+38.63	

Ranks in the top 10% for \$F
Ranks in the top 15% for YW
Ranks in the top 20% for WW, Milk, %IMF
Dam posts ratios of WR 22105, YR 2@111, %IMF 2@160
WW ratio 107; YW ratio 111; IMF ratio 145

243 LaGrand 2705 EXT 6875

Bull: 15495498 • Tattoo: 6875 • Calved: 2/25/2006

#N Bar Emulation EXT
+La Grand Roth EXT 2705
+Bear MTN Forever Lady 601

#Emulation N Bar 5522
N Bar Primrose 2424
#Papa Equator 2928
#Blackcap Lady 384 G D A R

#+H S A F Prompter Et
North Fork Formera 1030
+North Fork Formera 9031

#+Leachman Prompter
#Graham Erica 137
#+Krugerrand Merger 34 (FR)
+Finks Formera 289 614 8E8

Act. BW	95
Adj. WW	663
Adj. YW	1081
Adj. SC	36.31
Adj. IMF	3.42
Adj. REA	11.4

CED	BW	WW	YW	Milk	SC	%IMF	RE	Fat
+4	+2.9	+40	I+65	+18	I-.05	I+.08	I-.18	I+.022
\$W (Weaning)		\$F (Feedlot)		\$G (Grid)			\$B (Beef)	
+24.87		+9.08		+8.37			+19.12	

Dam posts ratios of BR 4@95, WR 4@101
IMF ratio 121

247 LaGrand Big River 6565

Bull: 15503772 • Tattoo: 6565 • Calved: 3/3/2006

+LCC Big River 3499J
LaGrand Big River 3043
#Andora Coquette Pride 1285

#+V D A R Ambush 1465 S A F
#+Davis Beauty 0505
+V A R Beauty 6140

#Leachman Saugahatchee 3000C
Bon View Pride 664
#N Bar Emulation EXT
#Andora Coquette Pride 932

#Paramont Ambush 2172
+V D A R Hyalite 830
#+G A R Sleep Easy 1009
V D A R Beauty 228

Act. BW	98
Adj. WW	680
Adj. YW	1146
Adj. SC	4.06
Adj. IMF	13.8

CED	BW	WW	YW	Milk	SC	%IMF	RE	Fat
-2	+5.3	+35	I+65	+27	I+.20	I+.13	I+.023	
\$W (Weaning)		\$F (Feedlot)		\$G (Grid)			\$B (Beef)	
+18.27		+10.99		+15.33			+26.20	

Ranks in the top 10% for Milk
Dam posts ratios of WR 5@109, %IMF 3@110, RE 3@100
IMF ratio 126

248 LaGrand Big River 6572

Bull: 15495430 • Tattoo: 6572 • Calved: 3/5/2006

+LCC Big River 3499J #Leachman Saugahatchee 3000C
LaGrand Big River 3043 Bon View Pride 664
#Andora Coquette Pride 1285 #N Bar Emulation EXT
#Andora Coquette Pride 932

#J L B Exacto 416 #G A R Precision 1680
Roth Delia 2068 +Brost Burgess 041
#Andora Delia 375 #Connealy Dateline
Andora Delia 183

Act. BW	100
Adj. WW	672
Adj. YW	672
Adj. SC	
Adj. IMF	3.23
Adj. REA	13.2

CED	BW	WW	YW	Milk	SC	%IMF	RE	Fat
+0	+4.3	+36	+71	+20		+0.6	+20	+0
SW (Weaning)			SF (Feedlot)		SG (Grid)		SB (Beef)	
+17.86			+16.57		+13.18		+28.19	

Dam posts ratios of YR 2@101, RE 2@101

252 LaGrand Unique 6564

Bull: 15495428 • Tattoo: 6564 • Calved: 3/3/2006

#White Oak Precise 6002 #G A R Precision 1680
Roths Millcreek Unique Stone Gate Jessie
#Mill Creek Karen Millcreek Combo
Millcreek Pride 7114

#Bon View Bando 598 #Tehama Bando 155
+Roth Wendy 1995 #Bon View Dora 56
+Double Bar Wendy 508-0100 #C H 054 Rito 0100
K M R Wendy 508

Act. BW	104
Adj. WW	728
Adj. YW	728
Adj. SC	
Adj. IMF	4.62
Adj. REA	16.0

CED	BW	WW	YW	Milk	SC	%IMF	RE	Fat
-1	+4.1	+45	+77	+21		+2.3	+30	-1.002
SW (Weaning)			SF (Feedlot)		SG (Grid)		SB (Beef)	
+23.23			+19.10		+19.91		+37.85	

Dam posts ratios of WR 1@105, %IMF 1@143, RE 1@113
WW ratio 105; IMF ratio 143; RE ratio 113

249 LaGrand Big River 6591

Bull: 15503773 • Tattoo: 6591 • Calved: 3/10/2006

+LCC Big River 3499J #Leachman Saugahatchee 3000C
LaGrand Big River 3043 Bon View Pride 664
#Andora Coquette Pride 1285 #N Bar Emulation EXT
#Andora Coquette Pride 932

#N Bar Emulation EXT #Emulation N Bar 5522
North Fork Formera 7069 N Bar Primrose 2424
North Fork Formera 5077 +J R Juice 286C
+Finks Formera 289 614 8E8

Act. BW	95
Adj. WW	600
Adj. YW	600
Adj. SC	
Adj. IMF	2.16
Adj. REA	13.1

CED	BW	WW	YW	Milk	SC	%IMF	RE	Fat
+1	+4.3	+43	+77	+16		+1.3	+13	+0.21
SW (Weaning)			SF (Feedlot)		SG (Grid)		SB (Beef)	
+19.79			+19.88		+11.57		+30.24	

Dam posts a ratio of %IMF 7@105



Famous 7001
~ Sire of
Lot 253

250 LaGrand 3043 Big River 6615

Bull: 15644762 • Tattoo: 6615 • Calved: 3/18/2006

+LCC Big River 3499J #Leachman Saugahatchee 3000C
LaGrand Big River 3043 Bon View Pride 664
#Andora Coquette Pride 1285 #N Bar Emulation EXT
#Andora Coquette Pride 932

#G T Expo #Scotch Cap
Roth Lucy 2005 #GT Pine Siskin
+Roth Lucy 0431 #+V D A R Lucys Boy
+V D A R Lucy 3004

Act. BW	97
Adj. WW	635
Adj. YW	635
Adj. SC	
Adj. IMF	
Adj. REA	

CED	BW	WW	YW	Milk	SC	%IMF	RE	Fat
+4	+3.8	+35	+66	+23		+1.1	+14	+0.17
SW (Weaning)			SF (Feedlot)		SG (Grid)		SB (Beef)	
+20.34			+11.97		+12.99		+24.60	

Dam posts ratios of BR 3@98, WR 3@104, YR 2@107

253 LaGrand Famous 6264

Bull: +15625006 • Tattoo: 6264 • Calved: 1/22/2006

#S A F Fame #Minerts Fortune 2000
#Famous 7001 #+S A F Royal Lass 1027
T K Karen 1369 #A R New Trend
#V D A R Karen 978

Rally Ivy League 171 (R) Sayre Patriot
#Waf Rally Missie 554 #Rally Queen Mother 1997
Rally Missie 562 #Hoff Hi Spade S C 491
#Rally Missie 560

Act. BW	100
Adj. WW	698
Adj. YW	1173
Adj. SC	39.19
Adj. IMF	2.94
Adj. REA	14.9

CED	BW	WW	YW	Milk	SC	%IMF	RE	Fat
+0	+4.0	+42	+72	+17		+0.4	+30	-1.020
SW (Weaning)			SF (Feedlot)		SG (Grid)		SB (Beef)	
+23.06			+15.24		+16.16		+32.07	

Ranks in the top 4% for Fat
Dam posts ratios of WR 6@104, %IMF 34@100
RE ratio 106

251 LaGrand Big River 6635

Bull: 15503774 • Tattoo: 6635 • Calved: 3/24/2006

+LCC Big River 3499J #Leachman Saugahatchee 3000C
LaGrand Big River 3043 Bon View Pride 664
#Andora Coquette Pride 1285 #N Bar Emulation EXT
#Andora Coquette Pride 932

#TC Stockman 365 #TC Stockman
+LaGrand Lucys Girl 2830 TC Pride 0014
+FSHK Lucys Girl 553 #Traveler 1148 G D A R
+V D A R Pine Drive Lucy 7

Act. BW	92
Adj. WW	649
Adj. YW	649
Adj. SC	
Adj. IMF	
Adj. REA	

CED	BW	WW	YW	Milk	SC	%IMF	RE	Fat
+5	+3.3	+39	+64	+18		+0.2	+16	+0.003
SW (Weaning)			SF (Feedlot)		SG (Grid)		SB (Beef)	
+23.15			+8.48		+11.74		+21.78	

Dam posts ratios of YR 1@100, %IMF 1@125

254 LaGrand Equator 6687

Commercial Bull • Tattoo: 6687 • Calved: 4/22/06

#+Papa Power 096 #Cottontail Maternal POWER464
#Papa Equator 2928 Blackbird D H D 2816
#Papa Envious Blackbird 8849 Papa Rito Traveler 4807
Envious Blackbird D H D 5848

Act. BW	101
Adj. WW	
Adj. YW	
Adj. SC	
Adj. IMF	
Adj. REA	

CED	BW	WW	YW	Milk	SC	%IMF	RE	Fat
SW (Weaning)			SF (Feedlot)		SG (Grid)		SB (Beef)	

Purebred Angus

Hereford Bulls Sons of Moler, Reload & Top Secret



255 LaGrand Moler 86S ET

Bull: P42735574 - Tattoo: 86S - Calved: 3/15/2006

Remital Online 122L
BR Moler ET
DM L1 Dominette 820

Remital Embracer 8E
Remital Catalina 24H
Remital Keynote 20X
DM L1 Dominette 518

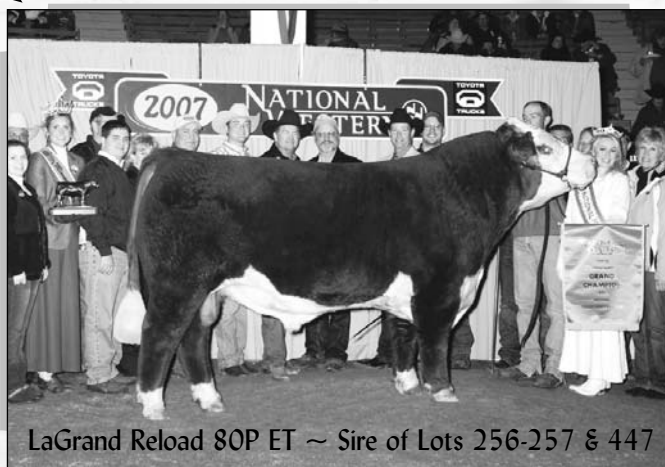
C -S Pure Gold 98170
JJD Victoria Gold 2018
JJJ Victoria 109W 112

C Gold Rush 1ET
C Ms Dom 93218 1ET
BTF Forage Finder 109W
JLH Victra 1106 U599

Act. BW	97
Adj. WW	659
Adj. YW	1259
Adj. SC	40.9
Adj. IMF	3.12
Adj. REA	14.17

CED	BW	WW	YW	Milk	SC	%IMF	RE	Fat
-2.8	+4.2	+52	+87	+23	+0.9	-0.08	+0.59	-0.005

Ranks in the top 5% for M&G, REA
Ranks in the top 10 % for WW, YW, M&G
Ranks in the top 20% for SC and Fat
Dam posts ratios of RE 10@102, YR 10@106.2



256 LaGrand Reload 27S ET

Bull: P42734990 - Tattoo: 27S - Calved: 1/28/2006

AA PRF Wideload
LaGrand Reload 80P ET
TSF Ms Keynote 729

AA Boomer 611
PRF Ms Scarlet 919
Remital Keynote 20X
BTF Ms Forage 109W 9001

IGT 654 Payload 277S
Victoria 4G
Victoria

Enforcer 107H
RHF Victra 424 654
Wintun Messenger 26W
OR L Transvic 54915K

Act. BW	98
Adj. WW	591
Adj. YW	1095
Adj. SC	37.9
Adj. IMF	2.59
Adj. REA	12.77

CED	BW	WW	YW	Milk	SC	%IMF	RE	Fat
-0.2	+4.6	+44	+68	+17	+0.4	-0.01	+0.13	+0.001

258 LaGrand Top Secret 06S

Bull: P42735564 - Tattoo: 06S - Calved: 1/6/2006

MJB Blazer 1000
KT Top Secret 1030
KT Ms 517 Felton 8031 (DOD)

Churchill Bang 500
MJB Ms Achiever 8108
Feltons 517
Ms RST X4 6002

OXH Mark Domino 8020
LaGrand Dixie 110P ET
Gerber 80X Dixie 106Z

SR Mark I J215
OXH Kate 6047 1ET
Gerber Voyageur 80X
Gerber 2105 Dixie 22S

Act. BW	83
Adj. WW	651
Adj. YW	1147
Adj. SC	38.5
Adj. IMF	2.49
Adj. REA	12.83

CED	BW	WW	YW	Milk	SC	%IMF	RE	Fat
+2.1	+2.0	+47	+74	+27	+1.1	+0.16	+0.05	+0.014

Ranks in the top 5% for Milk, M&G, SC, IMF
Ranks in the top 20% for CED, BW, WW
Dam posts ratios of BR 1@99; WR 1@101; RE 1@102; %IMF 1@106

257 LaGrand Reload 28S

Bull: 42734991 - Tattoo: 28S - Calved: 1/29/2006

AA PRF Wideload
LaGrand Reload 80P ET
TSF Ms Keynote 729

AA Boomer 611
PRF Ms Scarlet 919
Remital Keynote 20X
BTF Ms Forage 109W 9001

CS Boomer 29F
STAR Bethany 53N
BP MS Hornet 48L

Remital Boomer 46B
CS Miss 1st Flag 21A
WS New Era 871
LJR Kirstie 46G

Act. BW	98
Adj. WW	570
Adj. YW	1067
Adj. SC	37.9
Adj. IMF	2.07
Adj. REA	12.68

CED	BW	WW	YW	Milk	SC	%IMF	RE	Fat
-1.4	+5.1	+46	+73	+20	+0.6	-0.02	+0.31	-0.002

Ranks in the top 20% for REA
Dam posts a ratio of RE 2@100.5

259 LaGrand Top Secret 05S

Bull: 42735563 - Tattoo: 05S - Calved: 1/6/2006

MJB Blazer 1000
KT Top Secret 1030
KT Ms 517 Felton 8031 (DOD)

Churchill Bang 500
MJB Ms Achiever 8108
Feltons 517
Ms RST X4 6002

Remital Boomer 46B
LaGrand Tracy 115P ET
GK Tracy 100C (DOD)

Remital Keynote 20X
RMTLL Sallys Lass 120X
Bar JZ Tradition 434V
GK Rustling Lady 559W

Act. BW	68
Adj. WW	635
Adj. YW	1089
Adj. SC	38.0
Adj. IMF	3.10
Adj. REA	12.73

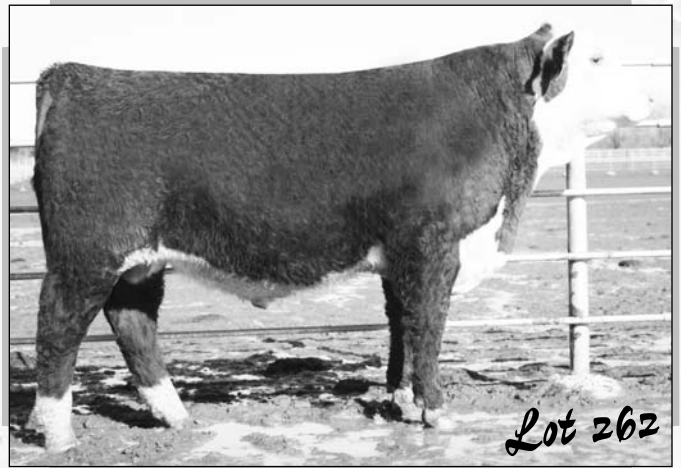
CED	BW	WW	YW	Milk	SC	%IMF	RE	Fat
+2.7	-0.3	+45	+64	+27	+0.9	+0.21	+0.24	+0.027

Ranks in the top 5% for BW, Milk, M&G
Ranks in the top 20% for CED, SC
Dam posts ratios of BW 1@81; RE 1@101; %IMF 1@132

Hereford Bulls Sons of Top Secret & World Class



KT Top Secret
1030 ~ Sire
of Lots 258-
260 & 448



Lot 262

260 LaGrand Top Secret 03S

Bull: 42735562 - Tattoo: 03S - Calved: 12/30/2005

MJB Blazer 1000
KT Top Secret 1030
KT Ms 517 Felton 8031 (DOD)

Churchill Bang 500
MJB Ms Achiever 8108
Feltons 517
Ms RST X4 6002

OXH Mark Domino 8020
LaGrand Dixie 105P ET
Gerber 80X Dixie 106Z

SR Mark I J215
OXH Kate 6047 1ET
Gerber Voyageur 80X
Gerber 2105 Dixie 22S

Act. BW	88
Adj. WW	687
Adj. YW	1271
Adj. SC	39.3
Adj. IMF	
Adj. REA	

CED	BW	WW	YW	Milk	SC	%IMF	RE	Fat
+1.4	+3.0	+51	+89	+28	+1.1	+0.17	0.00	+0.023

Ranks in the top 5% for Milk, M&G, SC, IMF
Ranks in the top 10% for SC
Dam posts ratios of WR 1@106, YR 1@109

262 LaGrand World Class 80S ET

Bull: P42735572 - Tattoo: 80S - Calved: 3/06/2006

Feltons 517
DR World Class 517 10H
VPI Marathon Lady 0081

Feltons 403
F Princess A80 (DOD)
SBR Marathon Man 257T
BF Lady Impact S29

STAR Energizer HHF 185E
GF Lady Sage 36G R57DG
GF Lady Heather 11D

SDF 007
HHR Trudy 926Y B02
GF Commodore 60B
JR Y168 Heather B176

Act. BW	96
Adj. WW	642
Adj. YW	1294
Adj. SC	39.6
Adj. IMF	3.30
Adj. REA	11.93

CED	BW	WW	YW	Milk	SC	%IMF	RE	Fat
+2.8	+2.1	+42	+69	+21	+1.0	-0.02	0.00	-0.003

Ranks in the top 10% for SC
Ranks in the top 20% for CED, BW, Milk
Dam posts ratios of BR 1@98, %IMF 2@107.6



Lot 261



Lot 263

261 LaGrand World Class 50S ET

Bull: P42735568 - Tattoo: 50S - Calved: 2/12/2006

Feltons 517
DR World Class 517 10H
VPI Marathon Lady 0081

Feltons 403
F Princess A80 (DOD)
SBR Marathon Man 257T
BF Lady Impact S29

C-S Pure Gold 98170
JJD Victoria Gold 2018
JJJ Victoria 109W 112

C Gold Rush 1ET&
C Ms Dom 93218 1ET
BTF Forage Finder 109W
JLH Victra 1106 U599

Act. BW	82
Adj. WW	588
Adj. YW	1050
Adj. SC	36.8
Adj. IMF	2.31
Adj. REA	12.30

CED	BW	WW	YW	Milk	SC	%IMF	RE	Fat
+1.2	+2.9	+50	+79	+25	+1.2	-0.01	+0.25	+0.004

Ranks in the top 5% for Milk, M&G, SC
Ranks in the top 20% for WW
Dam posts ratios of RE 10@102, %IMF 10@106.2

263 LaGrand World Class 08S

Bull: P42735565 - Tattoo: 08S - Calved: 1/10/2006

Feltons 517
DR World Class 517 10H
VPI Marathon Lady 0081

Feltons 403
F Princess A80 (DOD)
SBR Marathon Man 257T
BF Lady Impact S29

C-S Pure Gold 98170
LaGrand Divinity 10P
HHR Divinity G239

C Gold Rush 1ET
C Ms Dom 93218 1ET
JSF 37 271 Devo 23C
HHR Highlite 12A

Act. BW	86
Adj. WW	707
Adj. YW	1282
Adj. SC	37.6
Adj. IMF	2.71
Adj. REA	12.30

CED	BW	WW	YW	Milk	SC	%IMF	RE	Fat
+2.5	+3.6	+56	+97	+27	+1.1	0.00	+0.23	+0.019

Ranks in top 5% for WW, YW, Milk, M&G, SC
Ranks in the top 20% for CED
Dam posts ratios of WR 1@109, YR 1@110, %IMF 1@116



Lot 264



Lot 266

264 LaGrand Wideload 155R ET

Bull: P42728063 - Tattoo: 155R - Calved: 12/16/2005

AA Boomer 611
AA PRF Wideload
PRF Ms Scarlett 919

Remittal Boomer 46B
EF Idealist Penny 812
NJW 1Y Wrangler 19D
AA Imperial Lady 2119

C -S Pure Gold 98170
HHR Divine Lady 314M
HHR Divinity G239

C Gold Rush 1ET
C Ms Dom 93218 1ET
JSF 37 271 Devo 23C
HHR Highlite 12A

Act. BW	98
Adj. WW	680
Adj. YW	1099
Adj. SC	36.1
Adj. IMF	
Adj. REA	

CED	BW	WW	YW	Milk	SC	%IMF	RE	Fat
-0.4	+4.9	+56	+85	+24	+0.8	-0.13	+0.39	0.000

Ranks in the top 5% for WW, Milk, M&G
Ranks in the top 10% for REA, YW
Ranks in the top 20% for SC

266 LaGrand M236 Bennett 81S ET

Bull: P42735573 - Tattoo: 81S - Calved: 3/6/2006

RRH Mr Felt 3008
KCF Bennett 3008 M326
KCF Miss 459 F284

Feltons 517
RRH Ms Vict 6191
Feltons 459
KCF Miss X4 B156

C -S Pure Gold 98170
JJD Victoria Gold 2018
JJJ Victoria 109W 112

C Gold Rush 1ET
C Ms Dom 93218 1ET
BTF Forage Finder 109W
JLH Victra 1106 U599

Act. BW	100
Adj. WW	589
Adj. YW	1173
Adj. SC	39.6
Adj. IMF	2.82
Adj. REA	14.13

CED	BW	WW	YW	Milk	SC	%IMF	RE	Fat
-1.9	+4.3	+53	+85	+21	+1.3	+0.12	+0.55	+0.007

Ranks in the top 5% for WW, SC, REA
Ranks in the top 10% for M&G, IMF
Ranks in the top 20% for YW and Milk
Dam posts ratios of RE 10@102, %IMF 10@106.2

265 LaGrand Wideload 119R

Bull: P42670929 - Tattoo: 119R - Calved: 9/12/2005

AA Boomer 611
AA PRF Wideload
PRF Ms Scarlett 919

Remittal Boomer 46B
EF Idealist Penny 812
NJW 1Y Wrangler 19D
AA Imperial Lady 2119

WLB Willis 25C 114F
Biglieni Hannah 17K
Biglieni Mary 4C

NJW Z17 Vaquero 25C
Shell-River Nickie 13C
Biglieni Josiah Goodl22R
Biglieni Beth 30X

Act. BW	80
Adj. WW	639
Adj. YW	1011
Adj. SC	NA
Adj. IMF	2.06
Adj. REA	11.56

CED	BW	WW	YW	Milk	SC	%IMF	RE	Fat
+2.9	+1.6	+37	+48	+17	+0.3	-0.07	+0.17	+0.009

Ranks in the top 10% for CED and BW
Dam posts ratios of BR 4@98.8, RE 2@107.5



Lot 267

267 LaGrand Journey 22S ET

Bull: P42735566 - Tattoo: 22S - Calved: 1/27/2006

Remittal Kootenay 9K
UPS Journey 1ET
UPS Miss Pure Gold

Remittal Hollywood 37H
Remittal Ginger 23G
C -S Pure Gold 98170
UPS Miss Bang 6627 (DOD)

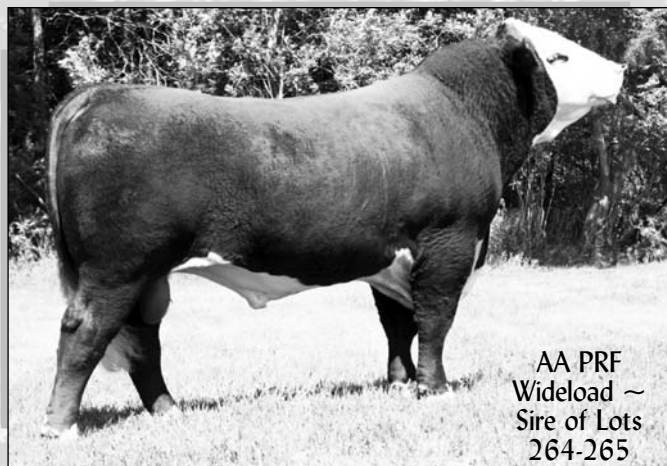
Feltons 512
Gerber 512 Dixie 36F
Gerber 135Y Dixie 13C

Feltons 403
F 208 Prospeta A45
WTK 67U Midwest 135Y
Gerber 452M Dixie 24R

Act. BW	90
Adj. WW	615
Adj. YW	1092
Adj. SC	38.4
Adj. IMF	2.69
Adj. REA	11.15

CED	BW	WW	YW	Milk	SC	%IMF	RE	Fat
-0.5	+2.5	+41	+62	+15	+0.9	+0.10	+0.12	+0.004

Ranks in the top 10% for IMF
Ranks in the top 20% for SC
Dam posts ratios of BR 5@87; WR 3@101.7; YR: 2@100.5; %IMF 13@101.1



**AA PRF
Wideload ~
Sire of Lots
264-265**



268

LaGrand Journey 56S ET

Bull: P42735570 · Tattoo: 56S · Calved: 2/17/2006

Remitall Kootenay 9K
UPS Journey 1ET
UPS Miss Pure Gold 0613

Remitall Hollywood 37H
Remitall Ginger 23G
C -S Pure Gold 98170
UPS Miss Bang 6627 (DOD)

BBL Victor 806 184
Ramsey Victoria Janelle
Janelles Lass B32

BBL Victor R64 806
PW K120 Victoria P24
Justa Impressive Guy
Miss Janelle L6GD

Act. BW	100
Adj. WW	655
Adj. YW	1137
Adj. SC	39.0
Adj. IMF	1.94
Adj. REA	13.27

CED	BW	WW	YW	Milk	SC	%IMF	RE	Fat
-0.5	+2.9	+40	+61	+15	+0.4	+0.06	+0.27	+0.013

Ranks in the top 20% for REA, IMF
Dam posts ratios of BR 7@99.6; WR 6@100.8; YR: 1@100

270

LaGrand 19D Wrangler 114R

Bull: P42670980 · Tattoo: 114R · Calved: 9/10/2005

Circle-D Wrangler 832W
NJW 1Y Wrangler 19D
NJW Frosty 1Y

Bar H L1 Chance 55S
Crcle D193 Silhouet 335S
BT JR Quester 604M
NJW P183 003 Nickette 1W

DJR LF Red Hot 913
LaGrand Dixie 32N ET
Gerber 512 Dixie 36F

RF Target 105A
ROF Renaissance 307F
Felttons 512
Gerber 135Y Dixie 13C

Act. BW	72
Adj. WW	548
Adj. YW	1046
Adj. SC	NA
Adj. IMF	2.75
Adj. REA	12.64

CED	BW	WW	YW	Milk	SC	%IMF	RE	Fat
+6.3	+0.9	+34	+54	+14	+0.4	-0.02	+0.16	-0.014

Ranks in the top 5% for CED, Fat
Ranks in the top 10% for BW
Dam posts ratios of BR 1287, RE 1@104, %IMF 1@110



269

LaGrand Pringle 18S ET

Bull: P42735959 · Tattoo: 18S · Calved: 1/19/2006

Remitall Keynote 20X
Haroldson's Pringle 20X 12G
The Cliffs P183 Joy 5C

Remitall Teamster 9T
Remitall Patricia 99P
JR Nick The Butler P183 (HY)
The Cliffs 18L Joy 35W

GK Explosion 412T
Gerber 412T Adela 94E
Gerber 452M Adela 12T

Explosion
GK Queen Ten 782R
BT Butler 452M
Gerber 469L Adela 62R

Act. BW	102
Adj. WW	731
Adj. YW	1225
Adj. SC	39.1
Adj. IMF	2.07
Adj. REA	12.93

CED	BW	WW	YW	Milk	SC	%IMF	RE	Fat
-6.6	+6.1	+50	+86	+13	+0.6	+0.01	+0.24	+0.013

Ranks in the top 10% for YW
Ranks in the top 20% for WW
Dam posts ratios of BR 5@96; WR 4@101.5; YR 2@109

271

LaGrand Tonic 104R

Bull: 42670917 · Tattoo: 104R · Calved: 9/5/2005

NJW 1Y Wrangler 19D
Purple Tonic 10M
JH Miss Madalynne

Circle-D Wrangler 832W
NJW Frosty 1Y
JH Excaliber 3B
RH Ms BT 445M 8606 (DOD)

SHF Interstate 20X D03
LaGrand Victoria 58N
JJJ Victoria 103T 608

Remitall Keynote 20X
DR Miss D45 V100
RHF IGT Victor 103T
JJJ Victoria 109W 112

Act. BW	80
Adj. WW	560
Adj. YW	1121
Adj. SC	NA
Adj. IMF	2.86
Adj. REA	12.65

CED	BW	WW	YW	Milk	SC	%IMF	RE	Fat
+2.8	+3.5	+45	+69	+17	+0.4	+0.04	+0.36	-0.001

Ranks in the top 10% for REA
Ranks in the top 20% for CED
Dam posts ratios of BR 1@98; WR 1@103; YR 1@102; RE 1@104, %IMF 1@114



272 LaGrand 9615 Ranger 124R ET
 Bull: P42670932 · Tattoo: 124R · Calved: 9/24/2005

Circle-C Wrangler 832W	Bar H L1 Chance 55S	Act. BW	90
MC Ranger 9615	Circle D193 Silhouet 335S	Adj. WW	670
SBF Royal Gypsy	Beartooth Nomad 421N	Adj. YW	1192
	SBF Ryl Trams Am 8118	Adj. SC	NA
MM RSM Stockmaster 512	MM Stockmaster 092	Adj. IMF	2.52
Remitall Catalina 24H	MM Miss Master 977	Adj. REA	11.63
Remitall Catalina 139C	Remitall Over-Drive 114Z		
	Remitall Sho-Gal 77Z		

CED	BW	WW	YW	Milk	SC	%IMF	RE	Fat
-6.3	+4.7	+51	+84	+18	+1.1	+0.06	+0.38	+0.003

273 LaGrand Keno 98R
 Bull: 42771789 · Tattoo: 98R · Calved: 5/28/2005

JSF 37 271 Devo 23C	RLOA R271 Dynasty ET37U	Act. BW	88
NS Keno 005	JSF 183 Victoria 7A	Adj. WW	675
GK Apollonia 834Z	GK Apollo of FL 1ET	Adj. YW	979
	GK Dyna Girl 849T	Adj. SC	NA
MSU MF Hudson 19H	MSU WNH Felton 5F	Adj. IMF	NA
DC Gunsmoke's Dream 19M	MSU Victoria 9F		
DC Gunsmoke Two	Gerber Gunner 8G	Adj. REA	
	DC Miss Fancy 9H		

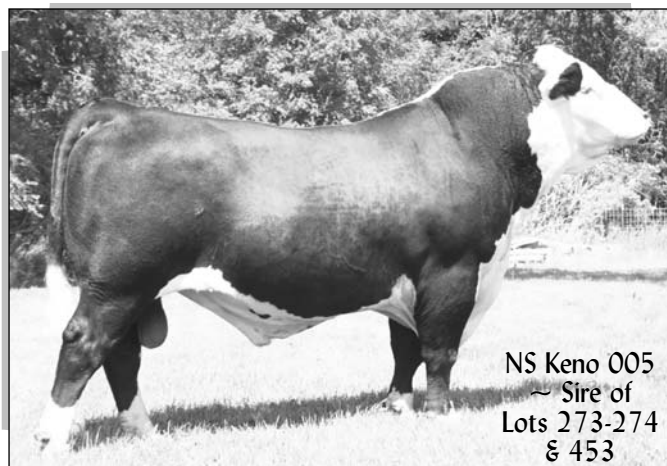
CED	BW	WW	YW	Milk	SC	%IMF	RE	Fat
+0.8	+4.0	+47	+80	+18	+0.8	-0.02	+0.11	-0.008

Ranks in the top 5% for SC
 Ranks in the top 10% for WW and REA
 Ranks in the top 20% for YW, M&G and IMF
 Dam post a ratio of RE 2@104

Ranks in the top 10% for F
 Ranks in the top 20% for WW, YW, SC

FOR REFERENCE ONLY

NS Keno 005
 Sire of Lots 273-274 and 453



274 LaGrand Keno 99R
 Bull: P42771790 · Tattoo: 99R · Calved: 6/2/2005

JSF 37 271 Devo 23C	RLOA R271 Dynasty ET37U	Act. BW	88
NS Keno 005	JSF 183 Victoria 7A	Adj. WW	671
GK Apollonia 834Z	GK Apollo of FL 1ET	Adj. YW	1030
	GK Dyna Girl 849T	Adj. SC	NA
C -S Pure Gold 98170	C Gold Rush 1ET	Adj. IMF	NA
JJD Victoria Gold 2018	C Ms Dom 93218 1ET		
JJJ Victoria 109W 112	BTF Forage Finder 109W	Adj. REA	
	JLH Victra 1106 U599		

CED	BW	WW	YW	Milk	SC	%IMF	RE	Fat
-1.9	+3.2	+44	+78	+20	+0.7	-0.10	+0.34	-0.010

Ranks in the top 5% for Fat
 Ranks in the top 20% for M&G, SC, REA
 Dam posts ratios of RE 10@102, %IMF 10@106.2



275 LaGrand Katinka 6174

Cow: 15469736 • Tattoo: 6174 • Calved: 1/14/06

O C C Kirby 633K #+O C C Emblazon 854E
B C Marathon 7022 +O C C Blackbird 785H
Gibbet Hill Mignonne E37 #Papa Equator 2928
Gibbet Hill Mignonne TR 29

+W C C Special Design L309 #Bon View New Design 878
LaGrand Katinka 4024 N Bar Primrose 2424
+Roth Katinka 2644 #Famous 7001
Bon View Katinka 1807

Act. BW
76
Adj. WW
624
Adj. YW
1013
Adj. SC
Adj. IMF
4.28
Adj. REA
12.1

CED	BW	WW	YW	Milk	SC	%IMF	RE	Fat
+6	+2.5	+55	+89	+21		+1.16	+1.49	+0.24
\$W (Weaning)		\$F (Feedlot)		\$G (Grid)		\$B (Beef)		
+30.07		+27.41		+14.15		+38.76		

Ranks in the top 3% for WW
Ranks in the top 15% for YW
Ranks in the top 15% for RE
Ranks in the top 4% for \$W
RE ratio 112
Dam post ratios of BR 1@98, WR 1@110, YR 1@101, %IMF 1@104, RE 1@112

277 LaGrand Miss Countess 6314

Cow: 15560112 • Tattoo: 6314 • Calved: 1/27/06

O C C Kirby 633K #+O C C Emblazon 854E
B C Marathon 7022 +O C C Blackbird 785H
Gibbet Hill Mignonne E37 #Papa Equator 2928
Gibbet Hill Mignonne TR 29

#Connealy Freightliner #Bon View Bando 598
+LaGrand Miss Countess H426 Joana Erica of Conanga
#+Grubbs Miss Countess 252 #TC Divident 963
D G Miss Countess 535

Act. BW
84
Adj. WW
581
Adj. YW
Adj. SC
Adj. IMF
4.59
Adj. REA
10.2

CED	BW	WW	YW	Milk	SC	%IMF	RE	Fat
+3	+3.0	+52	+85	+20		+1.18	+1.39	+0.05
\$W (Weaning)		\$F (Feedlot)		\$G (Grid)		\$B (Beef)		
+27.83		+24.49		+16.73		+38.44		

Ranks in the top 10% for WW
Ranks in the top 20% for YW
Ranks in the top 15% for \$W
IMF ratio 111
Dam posts ratios of WR 1@102, %IMF 1@111

276 LaGrand EvereldaEntense 6203

Cow: +15560085 • Tattoo: 6203 • Calved: 1/16/06

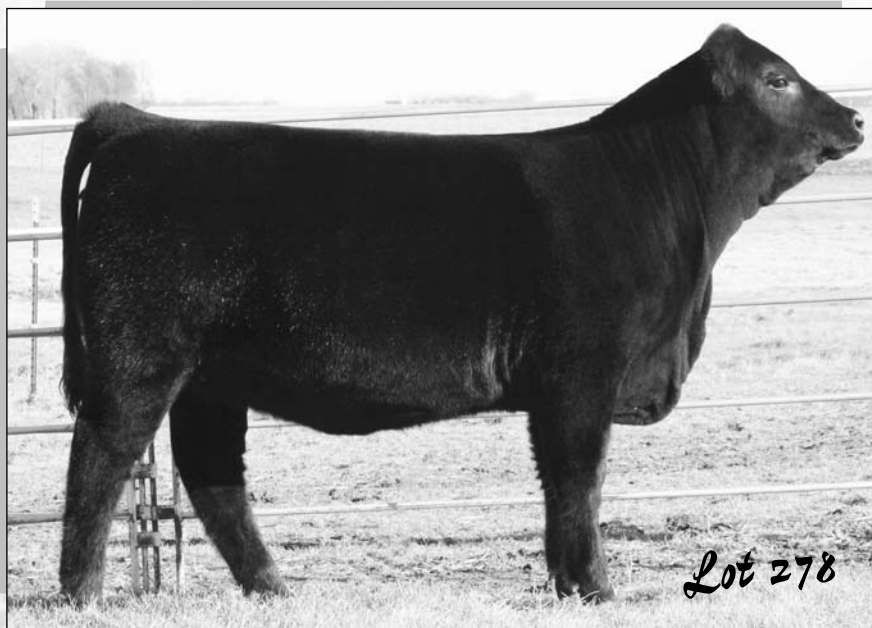
O C C Kirby 633K #+O C C Emblazon 854E
B C Marathon 7022 +O C C Blackbird 785H
Gibbet Hill Mignonne E37 #Papa Equator 2928
Gibbet Hill Mignonne TR 29

#Bon View Bando 598 #Tehama Bando 155
+FV Everelda Entense 1494 #Bon View Dora 56
+Sitz Everelda Entense 2636 #Traveler 124 G D A R
Sitz Everelda Entense 1137

Act. BW
90
Adj. WW
554
Adj. YW
Adj. SC
Adj. IMF
5.68
Adj. REA
9.8

CED	BW	WW	YW	Milk	SC	%IMF	RE	Fat
+5	+2.3	+50	+84	+22	+21	+2.25	+2.27	+0.19
\$W (Weaning)		\$F (Feedlot)		\$G (Grid)		\$B (Beef)		
+28.76		+24.26		+16.35		+38.67		

Ranks in the top 10% for WW, \$W
IMF ratio 131
Dam posts ratios of BR 2@96, WR 2@109, YR 1@111



278 LaGrand Elga 6335

Cow: 15461005 • Tattoo: 6335 • Calved: 1/28/06

+G A R Grid Maker #G D A R Traveler 044
BAAR USA Meatmaker 3075 G A R Precision 2536
Broken Arrow Wendy 935 #N Bar Emulation EXT
+H R Wendy 604

#Famous 7001 #S A F Fame
Pohlman's Elga 353 1 T K Karen 1369
+Pohlman's Elga 279B9 207 #Krugerrand of Donamere 490
Pohlman's Elga 240 4

Act. BW
94
Adj. WW
625
Adj. YW
1084
Adj. SC
Adj. IMF
3.78
Adj. REA
13.1

CED	BW	WW	YW	Milk	SC	%IMF	RE	Fat
+0	+6.0	+58	+108	+15		+1.49	+1.72	+0.12
\$W (Weaning)		\$F (Feedlot)		\$G (Grid)		\$B (Beef)		
+17.45		+48.34		+11.97		+44.67		

Ranks in the top 1% for WW, YW and \$F
Ranks in the top 3% for RE
Ranks in the top 10% for \$B
WW ratio 110, YW ratio 108, RE ratio 121



282 LaGrand Miss Shipps 644 I

Cow: 15560140 • Tattoo: 6441 • Calved: 2/10/06

+G A R Grid Maker #G D A R Traveler 044
BAAR USA Meatmaker 3075 G A R Precision 2536
Broken Arrow Wendy 935 #N Bar Emulation EXT
+H R Wendy 604

#Millcreek Diversity #+G A R Sleep Easy 1009
+LaGrand Miss Shipps 3763 Millcreek Travel Lass
GB Miss Shipps 2093 #G V Power Drive 7369
G B Dynamite 1311

Act. BW
72
Adj. WW
599
Adj. YW
1064
Adj. SC
1064
Adj. IMF
3.91
Adj. REA
12.5

CED	BW	WW	YW	Milk	SC	%IMF	RE	Fat
+5	+2.8	+57	+105	+15		+1.12	+1.67	-1.011
\$W (Weaning)			\$F (Feedlot)		\$G (Grid)		\$B (Beef)	
+24.50			+43.51		+17.02		+48.72	

Ranks in the top 2% for WW
Ranks in the top 1% for YW, \$F
Ranks in the top 4% for RE
Ranks in the top 3% for \$B
WW ratio 105; RE ratio 116
Dam posts ratios of BR 2@95, WR 2@100, YR 1@101, %IMF 2@113, RE 2@107

283 LaGrand Forever Lady 6447

Cow: 15560144 • Tattoo: 6447 • Calved: 2/11/06

+G A R Grid Maker #G D A R Traveler 044
BAAR USA Meatmaker 3075 G A R Precision 2536
Broken Arrow Wendy 935 #N Bar Emulation EXT
+H R Wendy 604

#Bon View New Design 1407 #B/R New Design 036
+LaGrand Forever Lady 3920 Bon View Pride 664
+B S S Forever Lady 9912 #+SVF Gdar 216 LTD
#+S V F Forever Lady 183C

Act. BW
80
Adj. WW
589
Adj. YW
1064
Adj. SC
1064
Adj. IMF
4.57
Adj. REA
9.5

CED	BW	WW	YW	Milk	SC	%IMF	RE	Fat
+7	+3.3	+55	+106	+20	+1.18	+1.17	+1.38	-1.001
\$W (Weaning)			\$F (Feedlot)		\$G (Grid)		\$B (Beef)	
+23.64			+45.43		+15.16		+47.22	

Ranks in the top 3% for WW
Ranks in the top 1% for YW
Ranks in the top 1% for \$F
Ranks in the top 5% for \$B
IMF ratio 111
Dam posts ratios of BR 2@95, WR 2@103, %IMF 2@114

284 LaGrand Pride Lucy 6450

Cow: +15561377 • Tattoo: 6450 • Calved: 2/12/06

+G A R Grid Maker #G D A R Traveler 044
BAAR USA Meatmaker 3075 G A R Precision 2536
Broken Arrow Wendy 935 #N Bar Emulation EXT
+H R Wendy 604

#Millcreek Diversity #+G A R Sleep Easy 1009
+LaGrand Pride Lucy 2483 Millcreek Travel Lass
+G Bar Pride Lucy 9329 #TC Dividend 963
+R A Pride Lucy 626

Act. BW
90
Adj. WW
591
Adj. YW
1064
Adj. SC
1064
Adj. IMF
4.39
Adj. REA
12.5

CED	BW	WW	YW	Milk	SC	%IMF	RE	Fat
+1	+5.0	+58	+109	+21		+1.03	+1.81	+1.005
\$W (Weaning)			\$F (Feedlot)		\$G (Grid)		\$B (Beef)	
+21.45			+47.43		+10.29		+43.17	

Ranks in the top 1% for WW, YW, RE, \$F
Ranks in the top 4% for \$B
RE ratio 12.5
Dam posts ratios of WR 1@105, RE 4@118

285 LaGrand Pride 6846

Cow: 15561384 • Tattoo: 6846 • Calved: 2/3/06

+G A R Grid Maker #G D A R Traveler 044
BAAR USA Meatmaker 3075 G A R Precision 2536
Broken Arrow Wendy 935 #N Bar Emulation EXT
+H R Wendy 604

Bon View Bando 1394 #Bon View Bando 598
+Roth Pride 2722 Bon View Erianna 131
Andora Coquette Pride 644 #Hoff Balancer S C 7109
Andora Coquette Pride 861

Act. BW
100
Adj. WW
503
Adj. YW
1064
Adj. SC
1064
Adj. IMF
4.39
Adj. REA
11.5

CED	BW	WW	YW	Milk	SC	%IMF	RE	Fat
-3	+6.0	+50	+101	+12		+1.08	+1.40	-1.013
\$W (Weaning)			\$F (Feedlot)		\$G (Grid)		\$B (Beef)	
+12.87			+42.12		+14.10		+44.44	

Ranks in the top 10% for WW
Ranks in the top 2% for YW
Ranks in the top 2% for \$F
Ranks in the top 10% for \$B
IMF ratio 106; RE ratio 105
Dam posts ratios of YR 1@105, %IMF 2@103, RE 2@100

279 LaGrand Erica 6825

Cow: 15461007 • Tattoo: 6825 • Calved: 1/21/06

+G A R Grid Maker #G D A R Traveler 044
BAAR USA Meatmaker 3075 G A R Precision 2536
Broken Arrow Wendy 935 #N Bar Emulation EXT
+H R Wendy 604

Roths Millcreek Unique #White Oak Precise 6002
+Roth Erica 1588 #Mill Creek Karen
D F Erica 4113 #G D A R Traveler 71
D F Erica 1112

Act. BW
96
Adj. WW
622
Adj. YW
1064
Adj. SC
1064
Adj. IMF
3.87
Adj. REA
12.5

CED	BW	WW	YW	Milk	SC	%IMF	RE	Fat
+1	+4.2	+54	+100	+17	+1.23	+1.01	+1.40	-1.006
\$W (Weaning)			\$F (Feedlot)		\$G (Grid)		\$B (Beef)	
+21.71			+39.39		+10.52		+40.34	

Ranks in the top 3% for WW
Ranks in the top 2% for YW
Ranks in the top 3% for \$F
RE ratio 114
Dam posts ratios of WR 4@101, YR 4@100

280 LaGrand Katinka 6323

Cow: 15561366 • Tattoo: 6323 • Calved: 1/27/06

+G A R Grid Maker #G D A R Traveler 044
BAAR USA Meatmaker 3075 G A R Precision 2536
Broken Arrow Wendy 935 #N Bar Emulation EXT
+H R Wendy 604

#Connealy Dateline #D H D Traveler 6807
Roth Katinka 9095 #Eila Eila of Conanga
#Bon View Katinka 1346 #Bon View Emulation Ext 473
Bon View Katinka 811

Act. BW
106
Adj. WW
522
Adj. YW
1064
Adj. SC
1064
Adj. IMF
4.49
Adj. REA
12.0

CED	BW	WW	YW	Milk	SC	%IMF	RE	Fat
-7	+8.2	+51	+98	+15	+1.10	+1.08	+1.56	-1.012
\$W (Weaning)			\$F (Feedlot)		\$G (Grid)		\$B (Beef)	
+10.33			+38.49		+9.02		+38.05	

Ranks in the top 10% for WW
Ranks in the top 3% for YW and \$F
Dam posts ratios of YR 4@101, RE 5@104

281 LaGrand Beauty 6329

Cow: 15561367 • Tattoo: 6329 • Calved: 1/28/06

+G A R Grid Maker #G D A R Traveler 044
BAAR USA Meatmaker 3075 G A R Precision 2536
Broken Arrow Wendy 935 #N Bar Emulation EXT
+H R Wendy 604

+G A R Ext 4344 #N Bar Emulation EXT
North Fork Beauty 1009 +G A R Scotch Cap 509
+North Fork Beauty 8097 #+Krugerrand Merger 34
+V D A R Beauty 3005

Act. BW
104
Adj. WW
608
Adj. YW
1064
Adj. SC
1064
Adj. IMF
4.43
Adj. REA
11.6

CED	BW	WW	YW	Milk	SC	%IMF	RE	Fat
-5	+7.5	+61	+111	+14	+1.03	+1.09	+1.66	+1.003
\$W (Weaning)			\$F (Feedlot)		\$G (Grid)		\$B (Beef)	
+14.65			+48.34		+13.91		+47.36	

Ranks in the top 1% for WW, YW and \$F
Ranks in the top 4% for RE and \$B
WW ratio 107; IMF ratio 108; RE ratio 107
Dam posts ratios of BR 4@100, RE 3@103

286 LaGrand Empress 6857

Cow: 15560241 • Tattoo: 6857 • Calved: 2/10/06

+G A R Grid Maker
BAAR USA Meatmaker 3075
Broken Arrow Wendy 935

#G D A R Traveler 044
G A R Precision 2536
#N Bar Emulation EXT
+H R Wendy 604

#Krugerrand of Donamere 490
+Roth Empress 0319
Thunder Mountain Empress 0K3

#C H Stacker 7040
Donamere Bachel Beauty 288
#Rito 2100 G D A R
Thunder Mountain Empress 7K1

CED	BW	WW	YW	Milk	SC	%IMF	RE	Fat
-8	+8.6	+56	+105	+17		-1.14	+1.42	-1.006
SW (Weaning)			SF (Feedlot)		SG (Grid)		SB (Beef)	
+11.48			+43.93		+4.15		+35.92	

Ranks in the top 2% for WW
Ranks in the top 1% for YW
Ranks in the top 20% for RE
Ranks in the top 1% for \$F
WW ratio 105
Dam posts ratios of WR 5@102, YR 3@102

Act. BW	120
Adj. WW	630
Adj. YW	
Adj. SC	
Adj. IMF	3.44
Adj. REA	11.4

287 LaGrand Lady 6443

Cow: 15604080 • Tattoo: 6443 • Calved: 2/11/06

#Bon View New Design 878
+W C C Special Design L309
N Bar Primrose 2424

#B/R New Design 036
Bon View Gammer 85
#Emulation 31 (FX)
Primrose N Bar 9962

#C A Future Direction 5321
+LaGrand Lady 3713
Donamere Lady 2743

#G A R Precision 1680
C A Miss Power Fix 308
#Krugerrand of Donamere 490
Donamere Lady 209

CED	BW	WW	YW	Milk	SC	%IMF	RE	Fat
+4	+3.8	+44	+80	+25		+1.13	+1.28	+1.021
SW (Weaning)			SF (Feedlot)		SG (Grid)		SB (Beef)	
+23.47			+22.54		+14.76		+35.29	

Dam posts a WR of 2@101

Act. BW	88
Adj. WW	514
Adj. YW	
Adj. SC	
Adj. IMF	3.66
Adj. REA	10.6



Lot 288

288 LaGrand Peg 6753

Cow: +15458835 • Tattoo: 6753 • Calved: 3/2/06

#B/R New Design 323
+P V F New Horizon 001
Hyline Ellen 410

#B/R New Design 036
B/R Ruby of Tiffany 155
#Hyline Travel Agent
#Hyline Ellen 9062

#Sitz Traveler 9929
+TC Peg 7021
#TC Peg 9100

#D H D Traveler 6807
Sitz Everelda Entense 1137
#+Leachman Prompter
T C Peg 6108

CED	BW	WW	YW	Milk	SC	%IMF	RE	Fat
+5	+3.7	+43	+85	+22	+3.2	-1.22	+1.33	-1.016
SW (Weaning)			SF (Feedlot)		SG (Grid)		SB (Beef)	
+20.95			+28.08		+4.81		+27.37	

Act. BW	75
Adj. WW	608
Adj. YW	
Adj. SC	
Adj. IMF	2.86
Adj. REA	12.7



Lot 289

289 LaGrand Peg 6761

Cow: +15458836 • Tattoo: 6761 • Calved: 3/3/06

#B/R New Design 323
+P V F New Horizon 001
Hyline Ellen 410

#B/R New Design 036
B/R Ruby of Tiffany 155
#Hyline Travel Agent
#Hyline Ellen 9062

#Sitz Traveler 9929
+TC Peg 7021
#TC Peg 9100

#D H D Traveler 6807
Sitz Everelda Entense 1137
#+Leachman Prompter
T C Peg 6108

CED	BW	WW	YW	Milk	SC	%IMF	RE	Fat
+5	+3.7	+43	+85	+22	+3.2	-1.07	+1.25	-1.009
SW (Weaning)			SF (Feedlot)		SG (Grid)		SB (Beef)	
+20.95			+28.08		+8.96		+31.52	

Act. BW	75
Adj. WW	581
Adj. YW	
Adj. SC	
Adj. IMF	4.21
Adj. REA	12.0

Ranks in the top 20% for YW
Ranks in the 20% for \$F
RE ratio 119
Dam posts ratios of WR 4@101, YR 4@102, RE 42@101

*Thanks to our past customers
who have participated in the past sales!*



292 LaGrand Evergreen 6318

Cow: 15560114 • Tattoo: 6318 • Calved: 1/27/06

+P V F New Horizon 001 #B/R New Design 323
LaGrand Sun Dance 4211 Hyline Ellen 410
Partisover Burgess 616 #N Bar Emulation EXT
Partisover Burgess 431

#Connealy Frontline #Connealy Dateline
+ALC Baldrige Evergreen 810K #Pleasant Pill of Conanga
+Alc Baldrige Evergreen 28F #+V D A R Traveler 722
#GT Miss Traveler 58

Act. BW
88
Adj. WW
609
Adj. YW
12.0
Adj. SC
Adj. IMF
4.49
Adj. REA
12.0

CED	BW	WW	YW	Milk	SC	%IMF	RE	Fat
+2	+3.3	+56	+96	+22		+1.11	+1.30	+1.0
SW (Weaning)			SF (Feedlot)		SG (Grid)		SB (Beef)	
+27.54			+34.32		+13.15		+40.93	

Ranks in the top 2% for WW
Ranks in the top 4% for YW
Ranks in the top 15% for \$W
Ranks in the top 10% for \$F
Ranks in the top 20% for \$B
IMF ratio 108; RE ratio 109
Dam posts ratios of WR 3@108, %IMF 1@108, RE 1@104

293 LaGrand Blackclass 6430

Cow: +15560137 • Tattoo: 6430 • Calved: 2/9/06

+P V F New Horizon 001 #B/R New Design 323
LaGrand Sun Dance 4211 Hyline Ellen 410
Partisover Burgess 616 #N Bar Emulation EXT
Partisover Burgess 431

#Papa Equator 2928 #+Papa Power 096
+LaGrand Blackclass 2419 #Papa Envious Blackbird 8849
+G A R Ambush 1175 #Paramount Ambush 2172
+G A R Bando 09

Act. BW
110
Adj. WW
582
Adj. YW
11.5
Adj. SC
Adj. IMF
2.10
Adj. REA
11.5

CED	BW	WW	YW	Milk	SC	%IMF	RE	Fat
-4	+5.4	+56	+99	+17		+1.04	+1.24	-1.003
SW (Weaning)			SF (Feedlot)		SG (Grid)		SB (Beef)	
+20.65			+37.49		+10.09		+39.14	

Ranks in the top 2% for WW
Ranks in the top 3% for YW
Ranks in the top 4% for \$F
Dam posts a RE ratio of 2@103

294 LaGrand Blackclass 6446

Cow: 15560143 • Tattoo: 6446 • Calved: 2/11/06

+P V F New Horizon 001 #B/R New Design 323
LaGrand Sun Dance 4211 Hyline Ellen 410
Partisover Burgess 616 #N Bar Emulation EXT
Partisover Burgess 431

#C A Future Direction 5321 #G A R Precision 1680
+LaGrand Blackclass 3719 C A Miss Power Fix 308
Broken Arrow Roth MS RUSS808 #+Gdar SVF Russ 184B
Brokenarrow Blackclass3904-18

Act. BW
98
Adj. WW
626
Adj. YW
10.3
Adj. SC
Adj. IMF
4.26
Adj. REA
10.3

CED	BW	WW	YW	Milk	SC	%IMF	RE	Fat
-5	+6.6	+59	+100	+25		+1.17	+1.29	+1.013
SW (Weaning)			SF (Feedlot)		SG (Grid)		SB (Beef)	
+21.93			+37.32		+13.00		+42.56	

Ranks in the top 1% for WW
Ranks in the top 2% for YW
Ranks in the top 15% for Milk, \$B
Ranks in the top 4% for \$F
WW ratio 110
Dam posts ratios of WR 2@112, YR 1@105, %IMF 2@115

295 LaGrand Dora 6481

Cow: 15560158 • Tattoo: 6481 • Calved: 2/16/06

#B/R New Design 323 #B/R New Design 036
+BAAR LaGrand Sureshot 1192 B/R Ruby of Tiffany 155
H R Wendy 618 #Bon View Bando 598
+H R Wendy 402

#Papa Universe 515 #Papa Equator 2928
+LaGrand Dora 4856 PLD Eriskay Papa 011
Bon View Dora 1935 #Bon View Bando 598
#Bon View Dora 650

Act. BW
80
Adj. WW
561
Adj. YW
10.4
Adj. SC
Adj. IMF
4.33
Adj. REA
9.5

CED	BW	WW	YW	Milk	SC	%IMF	RE	Fat
+5	+2.4	+42	+74	+22		+1.17	+1.09	-1.021
SW (Weaning)			SF (Feedlot)		SG (Grid)		SB (Beef)	
+25.75			+17.25		+19.56		+36.49	

IMF ratio 105
Dam posts a %IMF ratio of 1@105

290 LaGrand Ms Spade 6268

Cow: 15386489 • Tattoo: 6268 • Calved: 1/22/06

+P V F New Horizon 001 #B/R New Design 323
LaGrand Sun Dance 4211 Hyline Ellen 410
Partisover Burgess 616 #N Bar Emulation EXT
Partisover Burgess 431

#TC Dividend 963 #+Leachman Prompter
Oak Ridge 6807 MS Spade 1027 T C Erica Eileen 6006
#+Oak Ridge MS 6807 Spade 985 #D H D Traveler 6807
Hoff Miss Spade 3103

Act. BW
90
Adj. WW
660
Adj. YW
1116
Adj. SC
Adj. IMF
4.07
Adj. REA
12.2

CED	BW	WW	YW	Milk	SC	%IMF	RE	Fat
+2	+3.4	+58	+96	+23		-1.04	+1.23	+1.003
SW (Weaning)			SF (Feedlot)		SG (Grid)		SB (Beef)	
+28.90			+33.50		+6.31		+34.33	

Ranks in the top 1% for WW
Ranks in the top 4% for YW
Ranks in the top 10% for \$W and \$F
RE ratio 111



291 LaGrand Foxy Lucy 6455

Cow: 15452543 • Tattoo: 6455 • Calved: 2/12/06

+P V F New Horizon 001 #B/R New Design 323
LaGrand Sun Dance 4211 Hyline Ellen 410
Partisover Burgess 616 #N Bar Emulation EXT
Partisover Burgess 431

#Bon View Bando 598 #Tehama Bando 155
+LaGrand Foxy Lucy 3776 #Bon View Dora 56
+North Fork Foxy Lucy 5009 #N Bar Emulation EXT
Finks 118 of 92 8E8

Act. BW
96
Adj. WW
629
Adj. YW
1077
Adj. SC
Adj. IMF
3.69
Adj. REA
10.4

CED	BW	WW	YW	Milk	SC	%IMF	RE	Fat
-3	+5.6	+61	+103	+22		+1.05	+1.09	+1.025
SW (Weaning)			SF (Feedlot)		SG (Grid)		SB (Beef)	
+23.93			+39.69		+4.55		+35.16	

Ranks in the top 1% for YW
Ranks in the top 2% for \$F
WW ratio 110; YW ratio 107
Dam posts ratios of WR 2@107, YR 1@107