

LAGRAND EQUATOR SONS



LAGRAND EQUATOR 4082 - Lot 209

209 LaGrand Equator 4082

Birth Date: 1-1-2004 Bull 14694244 Tattoo: 4082

#+PAPA Power 096 #Cottontail Maternal POWER464
 PAPA Equator 2928 Blackbird DHD 2816
 #11788302 #PAPA Envious Blackbird 8849 PAPA Rito Traveler 4807
 Envious Blackbird DHD 5848

#PAPA Forte 1921 PAPA Optima 9818
 Rmar Miss Traveler 684 PAPA Envious Blackbird 8832
 +12979022 +Car Don Miss Traveler B226 #+Leachman Prompter
 #GT Miss Traveler 58

NATIONAL WESTERN BULL.

Ranking in the top one per-

BW	205-DAY	RATIO	365-DAY	RATIO
98	853	119	N/A	N/A

cent among non-parent bulls for both Weaning Weight EPD and Yearling Weight EPD, this uniquely bred individual is the son of the high-performance Pathfinder Sire PAPA Equator 2928 with an individual weaning ratio of 119 combined with an individual IMF ratio of 110 and an individual ultrasound ribeye ratio of 103.

The dam of this bull has a progeny weaning ratio of 110 on three natural calves and a progeny yearling ratio of 108 on two head coupled with a progeny IMF and ultrasound ribeye ratio of 106 on three head and she is a result of mating the Pathfinder Sire PAPA Forte 1921 to the famous Car Don Miss Traveler B226 from the herd sire producing Evergreen family.

Performance	
BW	+5.4
WW	+55
YW	+101
MILK	+24

Carcass	
CW	1+17
MARB	1+07
RE	1+26
FAT	1-031
%RP	1+44

Muscular	
%IMF	1+14
RE	1+31

FAT	1-018
%RP	1+20

210 LaGrand Equator H445

Birth Date: 1-8-2004 Bull +14745509 Tattoo: H445

#+PAPA Power 096 #Cottontail Maternal POWER464
 PAPA Equator 2928 Blackbird DHD 2816
 #11788302 #PAPA Envious Blackbird 8849 PAPA Rito Traveler 4807
 Envious Blackbird DHD 5848

#Sitz Traveler 9929 #DHD Traveler 6807
 TC Peg 7021 Sitz Everelda Entense 1137
 +12797000 #TC Peg 9100 #+Leachman Prompter
 TC Peg 6108

A maternal brother to the \$7,500 Lot 1 bull of the 2004 LaGrand Bull Sale from the \$25,000 LaGrand donor TC Peg 7021 selected as the top-selling cow of a past TC sale.

This son of the high-performance Pathfinder Sire PAPA Equator 2928 offers a royal herd sire tabulation from the famous family descending from the All-American Grand Champion Cow and Pathfinder Dam TC Peg 9100.

Performance	
BW	1+5.6
WW	1+45
YW	1+90
MILK	1+19

Carcass	
CW	1+22
MARB	1+04
RE	1+22
FAT	1-021
%RP	1+19

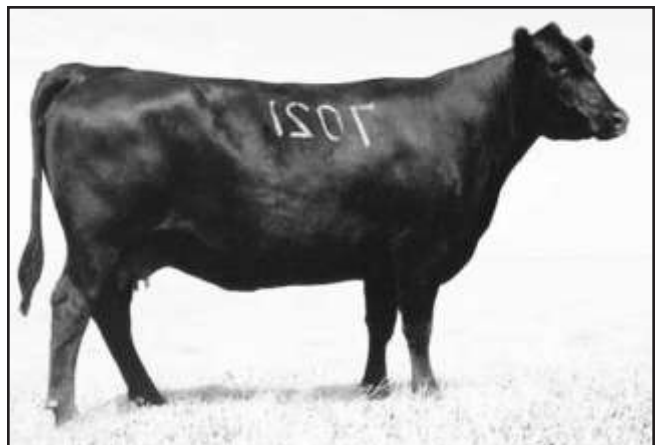
Muscular	
%IMF	1+0
RE	1+12

FAT	1-023
%RP	1+28

BW	205-DAY	RATIO	365-DAY	RATIO
87	603	ET	1157	ET

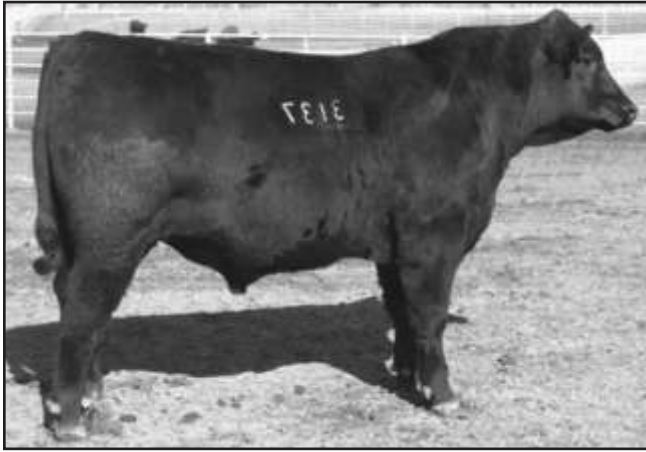


CAR DON MISS TRAVELER B226 - The grandam of Lot 209.



TC PEG 7021 - The \$25,000 dam of Lot 210.

LAGRAND EQUATOR SONS



LAGRAND EQUATOR 3137 - Lot 211



LAGRAND EQUATOR 4061 - Lot 215

211 LaGrand Equator 3137

Birth Date: 12-9-2003 Bull +14643344 Tattoo: 3137

BW	205-DAY	RATIO	365-DAY	RATIO
94	667	ET	1256	ET

Ultrasound	
%IMF	+2.22
RE	+1.40
FAT	-1.020
%RP	+1.37

212 LaGrand Equator 3138

Birth Date: 12-9-2003 Bull +14643345 Tattoo: 3138

BW	205-DAY	RATIO	365-DAY	RATIO
88	721	ET	1286	ET

Ultrasound	
%IMF	+1.20
RE	+1.32
FAT	-1.007
%RP	+1.09

213 LaGrand Equator 4126

Birth Date: 1-6-2004 Bull +14694247 Tattoo: 4126

#+PAPA Power 096 #Cottontail Maternal POWER464
 PAPA Equator 2928 Blackbird DHD 2816
 #11788302 #PAPA Envious Blackbird 8849 PAPA Rito Traveler 4807
 Envious Blackbird DHD 5848

#Bon View New Design 878 #B/R New Design 036
 Valley View LaGrand Blackcap Bon View Gammer 85
 14337385 WAF Blackcap 210 #GDAR Rito 596 LT
 Top Blackcap 03

Maternal brothers to a \$10,000 featured heifer in the 2004 LaGrand Fall Sale produced from a donor dam who has a progeny weaning ratio of 104 on her first natural calf.

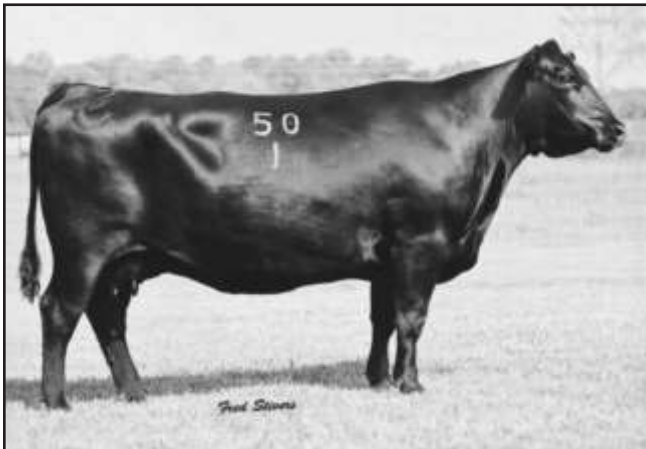
These bulls are sired by the now-deceased high-performance sire PAPA Equator 2928 who is noted for transmitting added performance and muscle and ranks in the top one percent among current sires for Yearling Weight EPD and in the top three percent for Weaning Weight EPD.

BW	205-DAY	RATIO	365-DAY	RATIO
81	643	ET	1163	ET

Performance	
BW	+5.8
WW	+1.44
YW	+1.86
MILK	+1.19

Carcass	
CW	+1.20
MARB	+1.09
RE	+1.24
FAT	-1.017
%RP	+1.21

Ultrasound	
%IMF	+1.26
RE	+1.32
FAT	+1.006
%RP	+1.23



SITZ HENRIETTA PRIDE 501 - The \$250,000 maternal sister to Lots 216, 217 and 218.

214 LaGrand Equator H425

Birth Date: 1-5-2004 Bull +14745505 Tattoo: H425

BW	205-DAY	RATIO	365-DAY	RATIO
90	732	ET	1226	ET

Ultrasound	
%IMF	+1.20
RE	+1.18
FAT	-1.017
%RP	+1.13

215 LaGrand Equator 4061

Birth Date: 1-9-2004 Bull +14694243 Tattoo: 4061

#+PAPA Power 096 #Cottontail Maternal POWER464
 PAPA Equator 2928 Blackbird DHD 2816
 #11788302 #PAPA Envious Blackbird 8849 PAPA Rito Traveler 4807
 Envious Blackbird DHD 5848

#+GAR Sleep Easy 1009 #Tehama Bando 155
 Andora Delia 95 Blackclass GAR 103
 12430982 Andora Delia 20 #+SAF Power Fix
 Andora Delia 886

This pair of flush brothers from the embryo program at LaGrand Angus Ranch are sired by the high-performance Pathfinder Sire PAPA Equator 2928 featuring a tabulation which offers an attractive blending of both growth, maternal and carcass genetics.

The donor dam of this bull has a progeny weaning ratio of 104 on six natural calves and a progeny yearling ratio of 106 on five head coupled with a progeny IMF ratio of 114 and a progeny ultrasound ribeye ratio of 103 on six head.

Three maternal sisters post a collective progeny weaning ratio of 108 from the same family that produced the National Junior Angus Show Grand Champion Roth Elba 1017.

BW	205-DAY	RATIO	365-DAY	RATIO
N/A	854	ET	1464	ET

Performance	
BW	+1.41
WW	+1.46
YW	+1.87
MILK	+1.20

Carcass	
CW	+1.13
MARB	+1.13
RE	+1.18
FAT	-1.025
%RP	+1.33

Ultrasound	
%IMF	+1.11
RE	+1.30
FAT	-1.014
%RP	+1.13

216 LaGrand Equator 4804

Birth Date: 1-18-2004 Bull +14784006 Tattoo: 4804

BW	205-DAY	RATIO	365-DAY	RATIO
101	832	ET	N/A	N/A

Ultrasound	
%IMF	+1.07
RE	+1.0
FAT	+1.0
%RP	-1.77

217 LaGrand Equator 4811

Birth Date: 1-21-2004 Bull +14792100 Tattoo: 4811

BW	205-DAY	RATIO	365-DAY	RATIO
100	746	ET	1332	ET

Ultrasound	
%IMF	+1.09
RE	+1.28
FAT	+1.001
%RP	-1.86

218 LaGrand Equator 4818

Birth Date: 1-24-2004 Bull +14792103 Tattoo: 4818

#+PAPA Power 096 #Cottontail Maternal POWER464
 PAPA Equator 2928 Blackbird DHD 2816
 #11788302 #PAPA Envious Blackbird 8849 PAPA Rito Traveler 4807
 Envious Blackbird DHD 5848

#QAS Traveler 23-4 #Band 234 of Ideal 3163
 Sitz Henrietta Pride 1219 QAS Blackbird Eve 601 1
 11208557 #Sitz Henrietta Pride 3147 #Cole Creek Oscar 92R
 Sitz Henrietta Pride 2513

This trio of flush brothers are the result of mating the high-performance Pathfinder Sire PAPA Equator 2928 to a time-tested donor dam who records a progeny weaning ratio of 111 and a progeny yearling ratio of 105 on seven natural calves coupled with a progeny IMF ratio of 105 on 14 head.

Sitz Henrietta Pride 501, a maternal sister, was the \$250,000 top-selling cow of a record-breaking Sitz Angus sale.

Thirty-eight maternal sisters to these bulls post a collective progeny weaning ratio of 101.

BW	205-DAY	RATIO	365-DAY	RATIO
100	712	ET	1355	ET

Performance	
BW	+1.51
WW	+1.44
YW	+1.89
MILK	+1.14

Carcass	
CW	+1.16
MARB	+1.05
RE	+1.18
FAT	-1.020
%RP	+1.23

Ultrasound	
%IMF	+1.18
RE	+1.27
FAT	-1.003
%RP	-1.73

LAGRAND EQUATOR SONS



LAGRAND EQUATOR 3143 - Lot 219

219 LaGrand Equator 3143

Birth Date: 12-19-2003 Bull +14662350 Tattoo: 3143

#+PAPA Power 096 #Cottontail Maternal POWER464
PAPA Equator 2928 Blackbird DHD 2816
#11788302 #PAPA Envious Blackbird 8849 PAPA Rito Traveler 4807
Envious Blackbird DHD 5848

SVF Bandolier #Bon View Bando 598
Roth Pride 2638 SVF Primrose Lady 9446
+14178608 Bon View Pride 316 #Bon View Emulation EXT 473
Bon View Pride 664

This outstanding herd sire prospect from the embryo program is sired by the high-performance Pathfinder Sire PAPA Equator 2928 featuring a royal herd sire tabulation from a dam by the rare and valuable SVF Bandolier descending from a \$50,000 valued grandam who is a maternal sister to Bon View New Design 1407 descending from the \$100,000 LaGrand donor Bon View Pride 664. The dam of this bull sold one-half interest for \$10,750 as the feature of the first Denim and Diamonds Angus Sale to Bruce Brock of Iowa and her flush brothers were features of the 2003 LaGrand Bull Sale.

BW	205-DAY	RATIO	365-DAY	RATIO
90	639	ET	1204	ET

Performance	
BW	+7.2
WW	+5.6
YW	+11.1
MILK	+1.7

Carcass	
CW	+2.1
MARB	+0.1
RE	+0.21
FAT	-0.021
%RP	+0.20

Ultrasound	
%IMF	+1.15
RE	+0.04
FAT	-1.002
%RP	-1.28



LAGRAND EQUATOR 4320 - Lot 222

222 LaGrand Equator 4320

Birth Date: 1-28-2004 Bull 14694257 Tattoo: 4320

#+PAPA Power 096 #Cottontail Maternal POWER464
PAPA Equator 2928 Blackbird DHD 2816
#11788302 #PAPA Envious Blackbird 8849 PAPA Rito Traveler 4807
Envious Blackbird DHD 5848

#VDAR Lucys Boy #Traveler 1148 GDAR
Dameron Blackbird 992 +VDAR Pine Drive Lucy 5
13372151 WH Miss Dividend D054 #TC Dividend 963
WH Miss Blackbird W094

This three-quarter brother to Lot 221 is sired by the Pathfinder Sire PAPA Equator 2928 from a dam by the Pathfinder Sire VDAR Lucys Boy.

BW	205-DAY	RATIO	365-DAY	RATIO
109	625	87	1209	96

Performance	
BW	+5.3
WW	+3.6
YW	+8.0
MILK	+1.7

Carcass	
CW	+1.8
MARB	+0.08
RE	+0.19
FAT	-0.011
%RP	+0.12

Ultrasound	
%IMF	+1.10
RE	+0.14
FAT	-1.004
%RP	+0.08

220 LaGrand Equator 4207

Birth Date: 1-16-2004 Bull 14694252 Tattoo: 4207

#+PAPA Power 096 #Cottontail Maternal POWER464
PAPA Equator 2928 Blackbird DHD 2816
#11788302 #PAPA Envious Blackbird 8849 PAPA Rito Traveler 4807
Envious Blackbird DHD 5848

#Connealy Dateline #DHD Traveler 6807
Roth Westwind 9018 #Ella Ella of Conanga
#13280467 GAR Westwind 1746 #Westwind Rito 8503 DJH 019
+GARRR Traveler 153

A son of the high-performance Pathfinder Sire PAPA Equator 2928 from a Pathfinder Dam with a progeny birth ratio of 96 coupled with progeny weaning and yearling ratios of 104 on four calves along with a progeny IMF ratio of 114 on three head. This bull descends from a grandam bred at Gardiner Angus Ranch in Kansas.

BW	205-DAY	RATIO	365-DAY	RATIO
92	698	97	1252	99

Performance	
BW	+4.1
WW	+4.4
YW	+8.9
MILK	+1.9

Carcass	
CW	+2.0
MARB	+0.0
RE	+0.26
FAT	-0.027
%RP	+0.32

Ultrasound	
%IMF	+1.09
RE	-1.06
FAT	-1.006
%RP	-1.44

223 LaGrand Equator H430

Birth Date: 1-6-2004 Bull +14745506 Tattoo: H430

#+PAPA Power 096 #Cottontail Maternal POWER464
PAPA Equator 2928 Blackbird DHD 2816
#11788302 #PAPA Envious Blackbird 8849 PAPA Rito Traveler 4807
Envious Blackbird DHD 5848

#DHD Traveler 6807 #QAS Traveler 23-4
Sitz Emma E 1705 #Bemindful Maid DHD 0807
12310508 Sitz Emma E 3003 Sitz Rito 7491
Sitz Emma E 2517

A product of the embryo program at LaGrand Angus Ranch from a special favorite donor dam with a progeny IMF ratio of 101 and a progeny ultrasound ribeye ratio of 103 on 28 head, sired by PAPA Equator 2928.

BW	205-DAY	RATIO	365-DAY	RATIO
100	624	ET	1141	ET

Performance	
BW	+3.4
WW	+4.3
YW	+9.0
MILK	+1.4

Carcass	
CW	+1.7
MARB	+0.0
RE	+0.23
FAT	-0.028
%RP	+0.36

Ultrasound	
%IMF	+1.08
RE	+0.20
FAT	-1.011
%RP	+0.30

221 LaGrand Equator 4235

Birth Date: 1-19-2004 Bull 14694254 Tattoo: 4235

#+PAPA Power 096 #Cottontail Maternal POWER464
PAPA Equator 2928 Blackbird DHD 2816
#11788302 #PAPA Envious Blackbird 8849 PAPA Rito Traveler 4807
Envious Blackbird DHD 5848

#VDAR Lucys Boy #Traveler 1148 GDAR
North Fork Rita 17 +VDAR Pine Drive Lucy 5
+13821277 +GAR Scotch Cap 509 #Scotch Cap
Rita 5H11 of 1B14 Rito 9J9

This son of the high-performance Pathfinder Sire PAPA Equator 2928 is from the herd sire producing Rita family. This dam of this bull has progeny IMF and ultrasound ribeye ratios of 113 and 114 on one head.

BW	205-DAY	RATIO	365-DAY	RATIO
98	693	97	1247	99

Performance	
BW	+6.4
WW	+4.4
YW	+8.8
MILK	+1.7

Carcass	
CW	+2.0
MARB	+1.3
RE	+0.26
FAT	-0.005
%RP	+1.11

Ultrasound	
%IMF	+1.25
RE	+0.01
FAT	+0.011
%RP	-1.33



SITZ EMMA E 1705 - The dam of Lot 223.

LAGRAND EQUATOR SONS



LAGRAND UNIVERSE 4844 - Lot 224

224 LaGrand Universe 4844

Birth Date: 2-23-2004 Bull +14891143 Tattoo: 4844

#PAPA Equator 2928 #PAPA Power 096
 PAPA Universe 515 #PAPA Envious Blackbird 8849
 #12429451 PLD Eriskay PAPA 011 #PAPA Rito T Intense DHD 6844
 #PAPA Eriskay 7862

#Bon View Bando 598 #Tehama Bando 155
 Bon View Dora 1935 #Bon View Dora 56
 12355157 #Bon View Dora 650 #QAS Traveler 23-4
 Bon View Dora 1268

A royally bred herd sire prospect from the embryo program by the Accelerated Genetics Pathfinder Sire PAPA Universe 515. The donor dam of this bull has a progeny birth ratio of 91 balanced with a progeny weaning ratio of 102 on four calves along with progeny IMF and ultrasound ribeye ratios of 112 and 113 respectively on two head from the same Dora family that produced Bon View Bando 598.

BW	205-DAY	RATIO	365-DAY	RATIO
83	813	ET	1194	ET

Performance	
BW	+3.2
WW	+1.44
YW	+1.79
MILK	+1.20
Carcass	
CW	+1.15
MARB	+1.20
RE	+1.22
FAT	-1.027
%RP	+1.37
Ultrasound	
%IMF	+1.26
RE	+1.43
FAT	+1.013
%RP	+1.03



LAGRAND 2661 EQUATOR 4440 - Lot 226

226 LaGrand 2661 Equator 4440

Birth Date: 2-19-2004 Bull 14682072 Tattoo: 4440

#PAPA Equator 2928 #PAPA Power 096
 La Grand Roth Equator 2661 #PAPA Envious Blackbird 8849
 +14178616 Bon View Pride 316 #Bon View Emulation EXT 473
 Bon View Pride 664

#GAR Sleep Easy 1009 #Tehama Bando 155
 Jolly R Rose 253E Blacklass GAR 103
 #12327601 Jolly R Rose 0235 #+JR Juice 2005
 #Revolution Rose of RR 5292

This bull from the first calf crop by La Grand Roth Equator 2661 was produced from a Pathfinder Dam stemming from the noted Revolution Rose family. The dam of this bull is backed by the marbling and maternal genetics of the Pathfinder Sires GAR Sleep Easy 1009 and JR Juice 2005.

BW	205-DAY	RATIO	365-DAY	RATIO
99	725	101	1208	96

Performance	
BW	+4.9
WW	+4.2
YW	+1.76
MILK	+2.0
Ultrasound	
%IMF	+1.16
RE	+1.07
FAT	-1.012
%RP	+1.05

225 LaGrand 2661 Equator 4401

Birth Date: 2-10-2004 Bull 14682323 Tattoo: 4401

#PAPA Equator 2928 #PAPA Power 096
 La Grand Roth Equator 2661 #PAPA Envious Blackbird 8849
 +14178616 Bon View Pride 316 #Bon View Emulation EXT 473
 Bon View Pride 664

#Famous 7001 #SAF Fame
 Pohlman's Elga 353 1 TK Karen 1369
 13879034 +Pohlman's Elga 27989 207 #Krugerrand of Donamere 490
 Pohlman's Elga 240 4

This bull from the first calf crop by the LaGrand herd sire La Grand Roth Equator 2661 was produced from a dam backed by the proven genetics of Famous 7001 and Krugerrand of Donamere 490.

BW	205-DAY	RATIO	365-DAY	RATIO
97	636	89	1232	96

Performance	
BW	+6.4
WW	+3.6
YW	+1.82
MILK	+1.5
Ultrasound	
%IMF	+1.05
RE	+1.12
FAT	-1.020
%RP	+1.26

227 LaGrand Equator 4317

Birth Date: 2-13-2004 Bull 14682224 Tattoo: 4317

#PAPA Equator 2928 #PAPA Power 096
 La Grand Roth Equator 2661 #PAPA Envious Blackbird 8849
 +14178616 Bon View Pride 316 #Bon View Emulation EXT 473
 Bon View Pride 664

#Sitz SLS Rainmaker 7596 #GDAR Rainmaker 340
 North Fork Ellen 9053 SLS Barbara Perfection 2571
 +13301579 #Hyline Ellen 9062 #Hyline Oscar 555
 #Hyline Ellen 472

This son of La Grand Roth Equator 2661 is from the same family that produced PVF New Horizon 001. The grandam of this bull is a second generation Pathfinder Dam.

BW	205-DAY	RATIO	365-DAY	RATIO
108	710	99	1278	101

Performance	
BW	+7.1
WW	+4.3
YW	+1.83
MILK	+1.8
Ultrasound	
%IMF	+1.0
RE	+1.03
FAT	+1.014
%RP	-1.44



WCC MISS PRIDE EVER 284 - The grandam of Lot 228.

228 LaGrand 2661 Equator 4484

Birth Date: 2-29-2004 Bull 14682131 Tattoo: 4484

#PAPA Equator 2928 #PAPA Power 096
 La Grand Roth Equator 2661 #PAPA Envious Blackbird 8849
 +14178616 Bon View Pride 316 #Bon View Emulation EXT 473
 Bon View Pride 664

#Sitz Traveler 8180 #GDAR Traveler 71
 Roth Miss Pride Ever 1563 Sitz Everelda Entense 1137
 +13928293 +WCC Miss Pride Ever 284 #GDAR Executive 727
 FAF Miss Pride Ever 138

A grandson of the American Royal Grand Champion WCC Miss Pride Ever 284 from a dam with progeny weaning and yearling ratios of 105 on two calves. This bull earned individual weaning and yearling ratios of 108 and 109 respectively.

BW	205-DAY	RATIO	365-DAY	RATIO
108	786	108	1397	109

Performance	
BW	+5.8
WW	+4.9
YW	+1.93
MILK	+2.2
Ultrasound	
%IMF	+1.04
RE	+1.10
FAT	-1.003
%RP	-1.53

REGULATOR SONS



LAGRAND REGULATOR 418 - Lot 229

229 La Grand Regulator 418

Birth Date: 1-28-2004 Bull 14765197 Tattoo: 418

+GDAR SVF Russ 184B #GDAR Executive 727
Roth Regulator 0405 +GDAR Forever Lady 719
+13661580 Bear MTN Lady Eraline 302 #Oneills Duke
+Oneills Eraline 100

BW	+6.0
WW	+56
YW	+92
MILK	+21

%IMF	1.08
RE	1.10

+Roth 216 LTD 9002 #+SVF GDAR 216 LTD
C&S Lass 203 +Double Bar Wendy 508-0100
14242908 WAC Lass 05 +Northern Improvement 4480 GF
Green Valley Lass 148 KN

BW	205-DAY	RATIO	365-DAY	RATIO	FAT
94	832	105	1240	101	1.004
					%RP 1.23

A son of Roth Regulator 0405 who sold two-thirds interest for \$5,100 to Larry Rice of State Creek Ranch in Nebraska where he went on to sire the popular top-selling sire group of the first Snake Creek Bull Sale in 2004. This bull earned an individual weaning ratio of 105 to rank in the top one percent among non-parent bulls for Weaning Weight EPD.

230 La Grand Judge 424

Birth Date: 2-7-2004 Bull +14765203 Tattoo: 424

+GDAR SVF Russ 184B #GDAR Executive 727
Roth Regulator 0405 +GDAR Forever Lady 719
+13661580 Bear MTN Lady Eraline 302 #Oneills Duke
+Oneills Eraline 100

BW	+5.3
WW	+48
YW	+84
MILK	+14

%IMF	1.05
RE	1.13

#+Leachman Right Time #N Bar Emulation EXT
WCC Primrose E13 Leachman Erica 0025
+12381090 +Premier Primrose 6067A #Pine Drive Big Sky
Stewarts Primrose 648M

BW	205-DAY	RATIO	365-DAY	RATIO	FAT
93	750	ET	1139	ET	1.017
					%RP 1.41

A son of the high-performance sire Roth Regulator 0405 from the noted Primrose family produced from a donor dam with a progeny IMF ratio of 110 on ten head. The grandam compiled an impressive record in the Premiere and Wilson programs.



ROTH REGULATOR 0405 - The sire of Lots 229 and 230.

BOB SONS



LAGRAND BOB 4346 - Lot 231

231 LaGrand Bob 4346

Birth Date: 2-2-2004 Bull 14682291 Tattoo: 4346

Baldrige Bob #Bon View Bando 598
FV Bob 1441 JB Queen Peggy 5B
+14008676 +North Fork Primrose 6028 #Transformer 100 EAR
N Bar Primrose 2424

BW	+4.5
WW	+38
YW	+73
MILK	+21

%IMF	1.16
RE	1.21

#Famous 7001 #SAF Fame
Roth Erica 2251 TK Karen 1369
14134854 Ext Erica 16 223 SHF #N Bar Emulation EXT
CH Ideal Erica 16 419 SHF

BW	205-DAY	RATIO	365-DAY	RATIO	FAT
91	716	100	1330	106	1.020
					%RP 1.25

This son of the LaGrand herd sire FV Bob 1441 was produced from a dam by the now-deceased Famous 7001 who reigned as the Grand Champion Bull of both the National Western and the North American International. The grandam was bred in the Sunnyhill herd.

232 LaGrand Bob 4410

Birth Date: 2-11-2004 Bull 14682348 Tattoo: 4410

Baldrige Bob #Bon View Bando 598
FV Bob 1441 JB Queen Peggy 5B
+14008676 +North Fork Primrose 6028 #Transformer 100 EAR
N Bar Primrose 2424

BW	+3.9
WW	+43
YW	+85
MILK	+21

%IMF	1.02
RE	1.31

#Whitestone Widespread MB #N Bar Emulation EXT
LaGrand Lady Eraline 221 MB Rachel 2173
+14240117 Bear MTN Lady Eraline 302 #Oneills Duke
+Oneills Eraline 100

BW	205-DAY	RATIO	365-DAY	RATIO	FAT
86	707	99	1392	111	1.011
					%RP 1.28

This son of the LaGrand herd sire FV Bob 1441 who was produced from a dam who is the maternal sister to the LaGrand and Snake Creek featured sire Roth Regulator 0405. The many-time champion grandam has produced a long list of outstanding descendants.



BEAR MTN LADY ERALINE 302 - The grandam of Lot 232.

LAGRAND AMBUSH BULLS



BCC BUSHWACKER 41-93 - The sire of Lot 233.

233 LaGrand Bushwacker 4518

Birth Date: 3-10-2004 Bull +14696707 Tattoo: 4518

#Paramont Ambush 2172 #Bandolier Eston Durness 42B
BCC Bushwacker 41-93 EWS Miss Burgess 1720
#12048084 RC Anita T Bando 918903 #Tehama Bando 155
RC Traveling Ann 8903

Bon View Black Baron 3250 Bon View Black Baron
Bon View Gammer 1034 #Bon View Mo Barbara 3376
#12126345 Bon View Gammer 112 #TC Influence
Bon View Gammer 569

This son of the now-deceased Genex/CRI

Pathfinder Sire BCC Bushwacker 41-93 is from the herd sire producing Gammer family that also produced Bon View New Design 878 and a long list of prominent sires. The Pathfinder donor dam of this bull has a progeny weaning ratio of 105 on seven natural calves and a progeny yearling ratio of 103 on six head combined with a progeny IMF ratio of 109 on five head.

Five maternal sisters post a collective progeny weaning ratio of 107.

234 LaGrand Ambush 4421

Birth Date: 2-14-2004 Bull +14682366 Tattoo: 4421

#Paramont Ambush 2172 #Bandolier Eston Durness 42B
Rockn D Ambush 1531 EWS Miss Burgess 1720
#12396365 MS Blackcap Band of RD 1301 #Tehama Bando 155
Miss Blackcap of RD 1127

#Traveler 124 GDAR #QAS Traveler 23-4
FSHK Beauty 327 Rachel Rito 813 GDAR
+11980175 #VDAR Beauty 930 #PS Power Play (GDF)
VDAR Shoshone Beauty 627

A son of the carcass sire Rockn D Ambush 1531

from the MGS donor FSHK Beauty 327 who combines a progeny birth ratio of 97 with progeny weaning and yearling ratios of 106 on three natural calves along with a progeny IMF ratio of 111 on 39 head.

Seventeen maternal sisters post a collective progeny weaning ratio of 102.



FSHK BEAUTY 327 - The dam of Lot 234.

235 LaGrand 1394 Ambush 4454

Birth Date: 2-21-2004 Bull 14683531 Tattoo: 4454

#Rockn D Ambush 1531 #Paramont Ambush 2172
Roth Ambush 1394 MS Blackcap Band of RD 1301
14106227 BSS Rita 9960 #B/R New Design 036
+GAR EXT 467

#Connealy Dateline #DHD Traveler 6807
Andora Delia 375 #Eila Eila of Conanga
#12430994 Andora Delia 183 SAV Dark Spade
Andora Delia 570

This grandson of Rockn D

Ambush 1531 was produced from a Pathfinder Dam with a progeny weaning ratio of 101 on eight calves and a progeny yearling ratio of 102 on six head coupled with a progeny IMF ratio of 118 and a progeny ultrasound ribeye ratio 104 on five head.

BW	205-DAY	RATIO	365-DAY	RATIO
85	703	97	1217	95

Performance	
BW	+9
VW	+38
YW	+69
MILK	+14

Ultrasound	
%IMF	+23
RE	+34
FAT	+0.15
%RP	+14

236 LaGrand 1394 Ambush 4482

Birth Date: 2-29-2004 Bull 14683532 Tattoo: 4482

#Rockn D Ambush 1531 #Paramont Ambush 2172
Roth Ambush 1394 MS Blackcap Band of RD 1301
14106227 BSS Rita 9960 #B/R New Design 036
+GAR EXT 467

+GAR EXT 4344 #N Bar Emulation EXT
North Fork Rito Lady 1039 +GAR Scotch Cap 509
14052778 +HA Rito Lady 8475 #RR Ferdinand 758D
+HA Rito Lady 4167

This bull descends from the \$50,000 HA Rito Lady

4167 and is backed by the carcass genetics of Rockn D Ambush 1531 and GAR EXT 4344.

This bull has individual weaning and yearling ratios of 101 and 104 respectively produced as his dam's first calf.

BW	205-DAY	RATIO	365-DAY	RATIO
105	729	101	1327	104

Performance	
BW	+5.5
VW	+50
YW	+89
MILK	+16

Ultrasound	
%IMF	+20
RE	+35
FAT	+1.001
%RP	+25

237 LaGrand 1394 Ambush 4491

Birth Date: 3-2-2004 Bull 14683534 Tattoo: 4491

#Rockn D Ambush 1531 #Paramont Ambush 2172
Roth Ambush 1394 MS Blackcap Band of RD 1301
14106227 BSS Rita 9960 #B/R New Design 036
+GAR EXT 467

#Sitz Traveler 9929 #DHD Traveler 6807
North Fork Blackbird 9046 Sitz Everelda Entense 1137
+13301584 +North Fork Blackbird 7120 #+Baldridge Intermediate 1501
#Lady Blackbird 111 GDAR

A blending of the herd sire producing Blackbird

Blossom, Everelda Entense and Rita families. This bull balances a modest individual birth ratio of 95 with an individual weaning ratio of 102 from a dam with a progeny IMF ratio of 105 and a progeny ultrasound ribeye ratio of 101 on three head.

BW	205-DAY	RATIO	365-DAY	RATIO
90	740	102	1322	105

Performance	
BW	+2.5
VW	+43
YW	+79
MILK	+21

Ultrasound	
%IMF	+27
RE	+41
FAT	+1.015
%RP	+0.04

238 LaGrand 1394 Ambush 4516

Birth Date: 3-10-2004 Bull 14683536 Tattoo: 4516

#Rockn D Ambush 1531 #Paramont Ambush 2172
Roth Ambush 1394 MS Blackcap Band of RD 1301
14106227 BSS Rita 9960 #B/R New Design 036
+GAR EXT 467

+GDAR Oscar 711 #Baldridge Oscar
Roth GDAR Forever Lady 9514 #LT Forever Lady 395 GDAR
+13400342 +GDAR Forever Lady 9500 #Rito 2100 GDAR
#LT Forever Lady 395 GDAR

This bull is from the famous Forever Lady family

descending from the legendary Pathfinder Dam LT Forever Lady 395 GDAR. This bull is a grandson of both Rockn D Ambush 1531 and GDAR Oscar 711.

BW	205-DAY	RATIO	365-DAY	RATIO
96	655	90	1169	93

Performance	
BW	+4.0
VW	+37
YW	+65
MILK	+15

Ultrasound	
%IMF	+11
RE	+13
FAT	+1.001
%RP	+14.5

LAGRAND FAMOUS 7001 SONS

239 LaGrand Famous 4967

Birth Date: 1-20-2004 Bull +14775692 Tattoo: 4967

BW	205-DAY	RATIO	365-DAY	RATIO
100	793	ET	1284	ET

Ultrasound	
%IMF	+1.14
RE	+1.62
FAT	-1.021
%RP	+1.78

240 LaGrand Famous 4978

Birth Date: 1-21-2004 Bull +14775745 Tattoo: 4978

BW	205-DAY	RATIO	365-DAY	RATIO
85	716	ET	1108	ET

Ultrasound	
%IMF	+1.23
RE	+1.48
FAT	-1.021
%RP	+1.90

241 LaGrand Famous 4973

Birth Date: 1-27-2004 Bull +14775730 Tattoo: 4973

BW	205-DAY	RATIO	365-DAY	RATIO
81	726	ET	1192	ET

Ultrasound	
%IMF	+1.13
RE	+1.59
FAT	-1.018
%RP	+1.81

242 LaGrand Famous 4977

Birth Date: 1-29-2004 Bull +14775742 Tattoo: 4977

BW	205-DAY	RATIO	365-DAY	RATIO
100	844	ET	1247	ET

Performance	
BW	+3.6
WW	+4.2
YW	+7.8
MILK	+21

Carcass	
CW	+1.6
MARB	+1.26
RE	+1.33
FAT	-1.002
%RP	+1.20

Ultrasound	
%IMF	+1.06
RE	+1.55
FAT	-1.027
%RP	+1.73

#SAF Fame #Minerts Fortune 2000
Famous 7001 #+SAF Royal Lass 1027
#12829336 TK Karen 1369 #AAR New Trend
#VDAR Karen 978

#GAR Precision 1680 #Tehama Bando 155
GAR Precision 2445 9J9 GAR 856
+12548703 GAR Pierre 2511 #GDAR Rito 596 LT
Finks 8132 of 68 Hoss

This group of flush brothers are sired by the now-deceased Famous 7001 who is the Grand Champion Bull of both the National Western and the North American International.

The donor dam of these bulls has a progeny weaning ratio of 107 and a progeny yearling ratio of 102 on four natural calves coupled with a progeny IMF ratio of 102 and a progeny ultrasound ribeye ratio of 106 on 27 head and she was bred at Gardiner Angus Ranch in Kansas.

A full brother to these bulls was a \$5,500 feature of the 2004 LaGrand Bull Sale and another, the LaGrand Specialist, was the 2004 Western National Reserve Late Bull Calf Champion.

243 LaGrand Famous 4123

Birth Date: 1-6-2004 Bull 14682249 Tattoo: 4123

BW	205-DAY	RATIO	365-DAY	RATIO
93	733	102	1218	97

Performance	
BW	+4.3
WW	+4.2
YW	+7.6
MILK	+19

Carcass	
CW	+1.4
MARB	+1.21
RE	+1.26
FAT	-1.004
%RP	+1.18

Ultrasound	
%IMF	+1.05
RE	+1.10
FAT	-1.001
%RP	+1.02

#SAF Fame #Minerts Fortune 2000
Famous 7001 #+SAF Royal Lass 1027
#12829336 TK Karen 1369 #AAR New Trend
#VDAR Karen 978

#+Krugerrand Merger 34 (FR) #Krugerrand of Donamere 490
North Fork Beauty 8097 Ankony 5G00 Blackbird GC017
+13133384 +VDAR Beauty 3005 #VDAR New Trend 315
VDAR Beauty 228

The son of the National Western and North American International Grand Champion Famous 7001 earned an individual weaning ratio of 102 from a dam who combines a progeny birth ratio of 98 with a progeny weaning ratio of 103 on five calves and a progeny yearling ratio of 103 on three head. This bull is from the herd sire producing Beauty family.



LAGRAND FAMOUS 4192 - Lot 244

244 LaGrand Famous 4192

Birth Date: 1-15-2004 Bull 14682322 Tattoo: 4192

BW	205-DAY	RATIO	365-DAY	RATIO
N/A	689	96	1142	91

Performance	
BW	+4.5
WW	+3.6
YW	+6.0
MILK	+21

Ultrasound	
%IMF	+1.10
RE	+1.03
FAT	-1.021
%RP	+1.30

#SAF Fame #Minerts Fortune 2000
Famous 7001 #+SAF Royal Lass 1027
#12829336 TK Karen 1369 #AAR New Trend
#VDAR Karen 978

+Sitz Traveler 8506 #Traveler 124 GDAR
NFC Blackcap J747 Sitz Everelda Entense 1137
13540528 NFC Blackcap 7008 #Paramont Ambush 2172
+Leachman Blackcap 5211

This son of the now-deceased champion

Famous 7001 descends from a third dam who has served as a valued LaGrand donor. The dam of this bull has a progeny IMF ratio of 105 and a progeny ultrasound ribeye ratio of 109 on two head.

245 LaGrand Famous 4210

Birth Date: 1-16-2004 Bull 14686237 Tattoo: 4210

BW	205-DAY	RATIO	365-DAY	RATIO
96	753	105	1257	100

Performance	
BW	+4.4
WW	+4.4
YW	+7.9
MILK	+22

Carcass	
CW	+1.12
MARB	+1.17
RE	+1.19
FAT	+1.005
%RP	+1.04

Ultrasound	
%IMF	+1.21
RE	+1.22
FAT	+1.016
%RP	+1.11

#SAF Fame #Minerts Fortune 2000
Famous 7001 #+SAF Royal Lass 1027
#12829336 TK Karen 1369 #AAR New Trend
#VDAR Karen 978

#Rito 3B17 of 0G10 Bando #Tehama Bando 155
Roth Empress 8028 Rita 0G10 of 8A5 Rito 8E8
+13206666 +DF Empress 6015 #N Bar Emulation EXT
+DF Empress 6073

This son of the now-deceased champion

Famous 7001 is from one of the most prolific herd sire producing families in breed history. This bull has an individual weaning ratio of 105 from a dam with a progeny weaning ratio of 105 on five calves and a progeny yearling ratio of 106 on four head along with a progeny IMF ratio of 108 and a progeny ultrasound ribeye ratio of 113 two head. Two maternal sisters post a collective progeny weaning ratio of 113.

R Famous 7001

Birth Date: 1-2-1997 Bull #12829336 Tattoo: 7001

BW	205-DAY	RATIO	365-DAY	RATIO
93	733	102	1218	97

Performance	
BW	+4.4
WW	+4.1
YW	+7.8
MILK	+18

Carcass	
CW	+1.8
MARB	+1.38
RE	+1.33
FAT	+1.001
%RP	+1.16

Ultrasound	
%IMF	+0.4
RE	+1.24
FAT	-0.021
%RP	+1.44

#Minerts Fortune 2000 #Schurrtop Fortune 3261
SAF Fame #Minerts Edella 951
#11935889 #+SAF Royal Lass 1027 #VDAR New Trend 315
+SAF Royal Lass 6089

#VDAR Shoshone 548
TK Karen 1369 Donna AAR 74
11277529 #VDAR Karen 978 #Pine Drive Big Sky
VDAR Shoshone Karen 568

FOR REFERENCE ONLY.
Featuring sons of this now-deceased champion who reigned as the Grand Champion Bull of both the National Western and the North American International. This world renowned sire of champions has produced numerous sale features and his influence will live on for generations to come.



FAMOUS 7001 - Reference Sire R

LAGRAND FAMOUS 7001 SONS



LAGRAND FAMOUS 4964 - Lot 246

246 LaGrand Famous 4964

Birth Date: 2-1-2004 Bull +14775687 Tattoo: 4964

#SAF Fame #Minerts Fortune 2000
#12829336 TK Karen 1369 #+SAF Royal Lass 1027
#AAR New Trend
#VDAR Karen 978

#OCC Bonanza 880B
Diablo Echo Style
+13086129 Diablo Echo 504

The son of the now-deceased champion Famous 7001 produced in the embryo program from the noted Echo family backed by the Pathfinder Sire OCC Bonanza 880B and CH Stacker 7040.

BW	205-DAY	RATIO	365-DAY	RATIO
90	708	ET	1148	ET

BW	+4.4	+3.7
WW	+41	+40
YW	+78	+64
MILK	+18	+21

CW	+9
MARB	+24
RE	+27
FAT	-0.005
%RP	+24

%IMF	+0.05
RE	+54
FAT	-0.001
%RP	+61

247 LaGrand Famous 4383

Birth Date: 2-8-2004 Bull +14686246 Tattoo: 4383

#SAF Fame #Minerts Fortune 2000
#12829336 TK Karen 1369 #+SAF Royal Lass 1027
#AAR New Trend
#VDAR Karen 978

#N Bar Emulation EXT
Wulffs Erica Dianna 6401
+13087604 Wulffs Erica Dianna C116

A unique genetic blending sired by Famous 7001 from a donor dam who has the distinction of being a flush sister to rare and valuable now-deceased Genex/CRI sire Wulffs EXT 6106.

The donor dam of this bull has progeny weaning and yearling ratios of 141 and 126 respectively on her only natural calf in the AHIR program coupled with a progeny IMF ratio of 102 and a progeny ultrasound ribeye ratio of 101 on 14 head.

BW	205-DAY	RATIO	365-DAY	RATIO
82	654	ET	1192	ET

BW	+2.8
WW <td>+40</td>	+40
YW <td>+77</td>	+77
MILK <td>+19</td>	+19

CW	+14
MARB	+23
RE	+20
FAT	+0.10
%RP	-0.04

%IMF	+0.05
RE	+43
FAT	-0.016
%RP	+66



WULFFS ERICA DIANNA 6400 - Flush sister to the dam of Lot 247.

248 LaGrand Famous 4226

Birth Date: 1-18-2004 Bull 14682216 Tattoo: 4226

#SAF Fame #Minerts Fortune 2000
#12829336 TK Karen 1369 #+SAF Royal Lass 1027
#AAR New Trend
#VDAR Karen 978

#+Krugerrand Merger 34 (FR) #Krugerrand of Donamere 490
North Fork Rachael 54 Ankony 5G00 Blackbird GC017
+13821290 SVF Rachel 150D #N Bar Emulation EXT
+SVF Rachel 171B

A blending of the famous sires Famous 7001 and Krugerrand Merger 34 who are now both Pathfinder Sires. This bull is from the noted Rachel family.

BW	205-DAY	RATIO	365-DAY	RATIO
91	656	92	1165	93

BW	+3.4
WW <td>+38</td>	+38
YW <td>+76</td>	+76
MILK <td>+21</td>	+21

CW	+16
MARB <td>+17</td>	+17
RE <td>+30</td>	+30
FAT <td>-0.004</td>	-0.004
%RP <td>+21</td>	+21

%IMF	-0.05
RE <td>+28</td>	+28
FAT <td>-0.015</td>	-0.015
%RP <td>+46</td>	+46

249 LaGrand New Design 4202

Birth Date: 1-16-2004 Bull 14682356 Tattoo: 4202

#B/R New Design 036 #VDAR New Trend 315
Bon View New Design 878 B/R Blackcap Empress 76
#13062750 Bon View Gammer 85 #Bon View Bando 598
Bon View Gammer 233

Vermilion Dateline 7078 #Connealy Dateline
Lagrand Miss Wix 2036 #Vermilion Blackbird 5044
14306392 +North Fork Miss Wix 9049 #TC Stockman 365
+North Fork Miss Wix 7002

BW	205-DAY	RATIO	365-DAY	RATIO
71	739	103	1369	109

BW	+8
WW <td>+45</td>	+45
YW <td>+89</td>	+89
MILK <td>+28</td>	+28

CW	+9
MARB <td>+20</td>	+20
RE <td>+16</td>	+16
FAT <td>+0.009</td>	+0.009
%RP <td>-0.04</td>	-0.04

%IMF	+1.3
RE <td>+20</td>	+20
FAT <td>+0.006</td>	+0.006
%RP <td>+16</td>	+16

250 LaGrand Makers Mark 4490

Birth Date: 3-1-2004 Bull 14682144 Tattoo: 4490

#Famous 7001 #SAF Fame
Davis Makers Mark 0287 TK Karen 1369
+13855449 Hyline Ellen 410 #Hyline Travel Agent
#Hyline Ellen 9062

#Leachman Conveyor #N Bar Emulation EXT
Fairview Starlette 6124 Leachman Blackbird 9053
12664545 Innisway MS Lone Star 851 #+SCR Lone Star 411 (R)
Trinity Charisma C35

This grandson of Famous 7001 has an individual weaning ratio of 102 from a dam who records progeny IMF and ultrasound ribeye ratios of 104 on six head.

BW	205-DAY	RATIO	365-DAY	RATIO
95	737	102	1251	98

BW	+2.9
WW <td>+41</td>	+41
YW <td>+75</td>	+75
MILK <td>+15</td>	+15

%IMF	-0.20
RE <td>+36</td>	+36
FAT <td>-0.012</td>	-0.012
%RP <td>+16</td>	+16

251 LaGrand Makers Mark 4404

Birth Date: 2-10-2004 Bull 14682335 Tattoo: 4404

#Famous 7001 #SAF Fame
Davis Makers Mark 0287 TK Karen 1369
+13855449 Hyline Ellen 410 #Hyline Travel Agent
#Hyline Ellen 9062

#Basin Max 602C #GT Maximum
Roth Erica 087 #Basin Eline Erica 315U
13554114 Basin Erica H527 #Basin Ambush 3905 (FR)
+Basin Erica E43

A grandson of the Pathfinder Sires Famous 7001 and Basin Max 602C. This bull has individual weaning and yearling ratios of 110 and 109 respectively from a dam who combines a progeny birth ratio of 99 with progeny weaning and yearling ratios of 108 and 106 respectively on three head.

BW	205-DAY	RATIO	365-DAY	RATIO
98	789	110	1367	109

BW	+3.4
WW <td>+47</td>	+47
YW <td>+87</td>	+87
MILK <td>+17</td>	+17

%IMF	+0.05
RE <td>+27</td>	+27
FAT <td>+0.041</td>	+0.041
%RP <td>+39</td>	+39

FAMOUS 7001 BULLS



SITZ EMMA E 1705 - The grandam of Lot 252.



LAGRAND 2152 05 416 - Lot 254

252 LaGrand Makers Mark 4487

Birth Date: 3-1-2004 Bull 14682135 Tattoo: 4487

#Famous 7001
Davis Makers Mark 0287
+13855449 Hyline Ellen 410

#SAF Fame
TK Karen 1369
#Hyline Travel Agent
#Hyline Ellen 9062

#JLB Exacto 416
Roth Emma E 0438
+13657713 Sitz Emma E 1705

#GAR Precision 1680
+Brost Burgess 041
#DHD Traveler 6807
Sitz Emma E 3003

A grandson of the noted sires
Famous 7001 and JLB

Exacto 416 with individual weaning and yearling ratios of 106 and 104 respectively.
The dam of this bull has progeny weaning and yearling ratios of 105 two calves.

BW	205-DAY	RATIO	365-DAY	RATIO
100	765	106	1319	104

Performance	
BW	+3.7
WW	+44
YW	+84
MILK	+20

Ultrasound	
%IMF	1.04
RE	+3.34
FAT	1.020
%RP	+1.52

254 La Grand 2152 05 416

Birth Date: 1-25-2004 Bull 14765195 Tattoo: 416

#Famous 7001
Bear Mtn Forever Famous 2152
+14156102 +Bear MTN Forever Lady 601

#SAF Fame
TK Karen 1369
#PAPA Equator 2928
#Blackcap Lady 384 GDAR

+Northern Improvement 4480 GF
WAC Lass 05
13690833 Green Valley Lass 148 KN

#TC Stockman 365
Blackcap of RR 5367
#Krugerrand of Donamere 490
BL Lassie Pride 3114

This son of the popular
champion Bear Mtn

Forever Famous 2152 blends the noted sires Famous 7001 and Northern Improvement 4480 GF.

BW	205-DAY	RATIO	365-DAY	RATIO
88	782	99	1217	99

Performance	
BW	+2.6
WW	+40
YW	+75
MILK	+19

Ultrasound	
%IMF	1.08
RE	+1.06
FAT	1.007
%RP	+1.07

253 LaGrand Makers Mark 4486

Birth Date: 3-1-2004 Bull 14682134 Tattoo: 4486

#Famous 7001
Davis Makers Mark 0287
+13855449 Hyline Ellen 410

#SAF Fame
TK Karen 1369
#Hyline Travel Agent
#Hyline Ellen 9062

#TC Stockman 365
Ingalls Stockman 2480
13609830 #Emulation Henry of IAR 248

#TC Stockman
TC Pride 0014
Ingalls Jack Bird 835
Checker Shoshone 88

This grandson of Famous

7001 has individual weaning and yearling ratios of 108 and 111 respectively from a dam with a progeny weaning ratio of 103 on three calves and a progeny yearling ratio of 106 on two head.
The grandam is a Pathfinder Dam.

BW	205-DAY	RATIO	365-DAY	RATIO
N/A	786	108	1416	111

Performance	
BW	+4.3
WW	+47
YW	+87
MILK	+20

Ultrasound	
%IMF	1.15
RE	+1.47
FAT	1.012
%RP	+1.34

255 LaGrand 87G Fame 4816

Birth Date: 1-13-2004 Bull +14783550 Tattoo: 4816

#SAF Fame
VNAR Fame 87G
12848149 VNARO Lass 4122-133D

#Minerts Fortune 2000
#+SAF Royal Lass 1027
#+Leachman Right Time
#Vermilion O Lass JP 4122

#VDAR New Trend 315
VDAR Lucy 425
#11400673 +VDAR Lucy 920

#AAR New Trend
#VDAR Lucy 704
#Schearbrook Shoshone
VDAR Lucy 329

This bull from the embryo

program is a son of the famous Pathfinder Dam VDAR Lucy 425 who combines a progeny birth ratio of 97 with progeny weaning and yearling ratios of 105 and 103 respectively on five calves along with a progeny IMF ratio of 111 on 21 head.
Twenty-two maternal sisters post a collective progeny weaning ratio of 104.

BW	205-DAY	RATIO	365-DAY	RATIO
96	647	ET	1066	ET

Performance	
BW	+1.7
WW	+39
YW	+64
MILK	+21

Carcass	
CW	+1
MARB	+1.17
RE	+1.09
FAT	+1.014
%RP	1.05

Ultrasound	
%IMF	+1.16
RE	+1.09
FAT	+1.008
%RP	+1.16



Thank you! Bob and Lucy Styles, "Designer," Steve Patton and Chris Styles.
Third herd bull purchase from LaGrand.



LAGRAND 87G FAME 4816 - Lot 255

LAGRAND HIGH-PERFORMANCE BULLS



LAGRAND VRD 4910 - Lot 256

256 LaGrand VRD 4910

Birth Date: 1-11-2004 Bull +14744497 Tattoo: 4910

BW	205-DAY	RATIO	365-DAY	RATIO
95	825	ET	1212	ET

Ultrasound	
%IMF	+0.07
RE	+0.72
FAT	-0.008
%RP	+0.66

257 LaGrand VRD 4916

Birth Date: 1-16-2004 Bull +14744498 Tattoo: 4916

#Connealy Dateline #DHD Traveler 6807
 Vermilion Dateline 7078 #Eila Eila of Conanga
 12810693 #Vermilion Blackbird 5044
 #+Leachman Right Time
 Vermilion Blackbird 3525

#GAR Precision 1680 #Tehama Bando 155
 DF Empress 4286 9J9 GAR 856
 12213545 +DF Empress 6073 #Pine Drive Big Sky
 KAF Miss Jetliner 641 1B4

This pair of high-performance prospects from the embryo program are sired by the noted sire known as VRD from the herd sire producing Empress family.

The dam of these bulls has a progeny IMF ratio of 107 and a progeny ultrasound ribeye ratio of 106 on 20 head to rank in the top one percent among current dams for both Ultrasound Ribeye Area EPD and Ultrasound Percent Retail Product EPD.

These bulls rank in the top two percent for both Yearling Weight EPD and Ultrasound Ribeye Area EPD with an Ultrasound Percent Retail Product EPD in the top three percent.

BW	205-DAY	RATIO	365-DAY	RATIO
93	760	ET	1283	ET

Performance	
BW	+5.3
WW	+5.0
YW	+9.6
MILK	+1.8

Carcass	
CW	+9
MARB	+0.09
RE	+0.22
FAT	-0.001
%RP	+0.13

Ultrasound	
%IMF	+0.14
RE	+0.53
FAT	-0.005
%RP	+0.32

258 LaGrand Formost 4446

Birth Date: 2-19-2004 Bull 14682079 Tattoo: 4446

Vermilion Dateline 7078 #Connealy Dateline
 Pilgrim Formost #Vermilion Blackbird 5044
 14337157 PL Easy Erica EXT 8G #N Bar Emulation EXT
 PL Erica SE 1E

#AAR Rainmaker 7407 Sitz Rainmaker 8663
 North Fork Rito Lady 27 #AAR Dixie 545
 #13858420 +HA Rito Lady 8475 #RR Ferdinand 758D
 +HA Rito Lady 4167

This son of the LaGrand herd sire Pilgrim Formost has an individual weaning ratio of 112 and an individual yearling ratio of 105 from a Pathfinder Dam with a progeny weaning ratio of 106 on three calves and a progeny yearling ratio of 106 on two head.

The third dam is the \$50,000 HA Rito Lady 4167.

BW	205-DAY	RATIO	365-DAY	RATIO
100	811	112	1344	105

Performance	
BW	+3.5
WW	+5.3
YW	+9.0
MILK	+2.2

Ultrasound	
%IMF	+0.02
RE	+0.16
FAT	+0.001
%RP	-0.05



VERMILION DATELINE 7078 - Featuring his sons.



LAGRAND ULTRAVOX 4810 - Lot 260

259 LaGrand Ultravox 4806

Birth Date: 1-15-2004 Bull +14792095 Tattoo: 4806

BW	205-DAY	RATIO	365-DAY	RATIO
94	744	ET	1221	ET

Ultrasound	
%IMF	+0.14
RE	+0.31
FAT	+0.012
%RP	+0.05

260 LaGrand Ultravox 4810

Birth Date: 1-23-2004 Bull +14792099 Tattoo: 4810

#+OSU 6T6 Ultra #SS Traveler 6T6
 BT Ultravox 297E +DF Empress 6079
 +12396224 Finks Vixon 788 #AAR New Trend
 Finks Vixon 423

#VDAR New Trend 315 #AAR New Trend
 Jolly R Forever 117E #VDAR Lucy 704
 +12327588 +Jolly R Forever 2008 #Candolier Forever 376
 MG S Black Diamond

These high-performance herd sire prospects were produced in the embryo program at LaGrand Angus Ranch from a donor dam with a progeny weaning ratio of 117 and a progeny yearling ratio of 109 on five natural calves.

The grandam is a full sister to the high marbling and high maternal Pathfinder Sire JR Juice 2005.

BW	205-DAY	RATIO	365-DAY	RATIO
99	741	ET	1269	ET

Performance	
BW	+4.7
WW	+4.6
YW	+7.8
MILK	+2.7

Carcass	
CW	+6
MARB	+0.25
RE	+0.10
FAT	+0.019
%RP	-0.20

Ultrasound	
%IMF	+0.16
RE	+0.16
FAT	+0.015
%RP	-0.25

261 LaGrand Ultravox 4836

Birth Date: 3-10-2004 Bull +14815498 Tattoo: 4836

#+OSU 6T6 Ultra #SS Traveler 6T6
 BT Ultravox 297E +DF Empress 6079
 +12396224 Finks Vixon 788 #AAR New Trend
 Finks Vixon 423

#VDAR New Trend 315 #AAR New Trend
 VDAR Lucy 425 #VDAR Lucy 704
 #11400673 +VDAR Lucy 920 #Schebrook Shoshone
 VDAR Lucy 329

A son of the high-performance sire BT Ultravox 297E from the Pathfinder Dam VDAR Lucy 425 who has earned an outstanding production record.

Maternal brothers also sell.

BW	205-DAY	RATIO	365-DAY	RATIO
90	772	ET	1204	ET

Performance	
BW	+4.3
WW	+4.5
YW	+7.9
MILK	+2.2

Carcass	
CW	+6
MARB	+0.26
RE	+0.11
FAT	+0.019
%RP	-0.18

Ultrasound	
%IMF	+0.30
RE	+0.17
FAT	+0.022
%RP	-0.18



LAGRAND ULTRAVOX 4836 - Lot 261

LAGRAND HIGH-PERFORMANCE BULLS



LAGRAND 216 LTD 4805 - Lot 262

262

LaGrand 216 LTD 4805

Birth Date: 1-30-2004 Bull +14792094 Tattoo: 4805

BW	205-DAY	RATIO	365-DAY	RATIO
85	631	ET	1090	ET

Ultrasound	
%IMF	+1.4
RE	+1.3
FAT	-0.02
%RP	+2.6

263

LaGrand 216 LTD 4812

Birth Date: 2-1-2004 Bull +14792101 Tattoo: 4812

BW	205-DAY	RATIO	365-DAY	RATIO
95	773	ET	1248	ET

Ultrasound	
%IMF	+2.0
RE	+2.0
FAT	+0.12
%RP	+0.2

264

LaGrand 217 LTD 4970

Birth Date: 2-7-2004 Bull +14786308 Tattoo: 4970

#Traveler 124 GDAR
SVF GDAR 216 LTD
+#12309326 +GDAR Forever Lady 718

#VDAR New Trend 315
Jolly R Forever 117E
+12327588 +Jolly R Forever 2008

#QAS Traveler 23-4
Rachel Rito 813 GDAR
#Balbridge Oscar
#LT Forever Lady 395 GDAR

#AAR New Trend
#VDAR Lucy 704
#Candolier Forever 376
MG S Black Diamond

BW	205-DAY	RATIO	365-DAY	RATIO
98	725	ET	1200	ET

Performance	
BW	+4.3
WW	+4.2
YW	+7.3
MILK	+2.3

Carcass	
CW	+1.7
MARB	+2.7
RE	+2.2
FAT	+0.14
%RP	+1.3

Ultrasound	
%IMF	+2.1
RE	+2.4
FAT	+0.12
%RP	+1.1

This trio of herd sire

prospects from the embryo

program are sired by the \$75,000 now-deceased SVF GDAR 216 LTD from a donor dam with a progeny weaning ratio of 117 and a progeny yearling ratio of 109 on five natural calves from the same family that produced JR Juice 2005.

265

LaGrand 217 LTD 4841

Birth Date: 3-17-2004 Bull +14831848 Tattoo: 4841

#Traveler 124 GDAR
SVF GDAR 216 LTD
+#12309326 +GDAR Forever Lady 718

#VDAR New Trend 315
VDAR Lucy 425
#11400673 +VDAR Lucy 920

#QAS Traveler 23-4
Rachel Rito 813 GDAR
#Balbridge Oscar
#LT Forever Lady 395 GDAR

#AAR New Trend
#VDAR Lucy 704
#Schebrook Shoshone
VDAR Lucy 329

BW	205-DAY	RATIO	365-DAY	RATIO
85	741	ET	1186	ET

Performance	
BW	+4.0
WW	+4.2
YW	+7.5
MILK	+1.8

Carcass	
CW	+1.7
MARB	+2.6
RE	+2.3
FAT	+0.14
%RP	+1.1

Ultrasound	
%IMF	+2.9
RE	+0.7
FAT	+0.19
%RP	+2.2

This bull from the embryo program is sired by a rare and valuable Pathfinder Sire from a famous Pathfinder Dam with an outstanding production record.



VDAR LUCY 425 - The Pathfinder Dam of numerous sons that sell.



FAR KRUGERRAND 410H - The sire of Lot 268.

266

LaGrand Patton Cash 339

Birth Date: 12-6-2003 Bull 14567696 Tattoo: 339

#TC Dividend 963
Grubbs Dividend 511
13941974 +Grubbs Miss Travett 779

#+Leachman Prompter
TC Erica Eileen 6006
#OGL Battle Cry 427 128
Sodak Travett 3040

Koupals B&B Precision 0068
MCM Roth Lady Agnes 1400
14069290 +Patton Lady Agnes 913

Whitestone Precision H141
Koupal Blackcap 501
#Famous 7001
+Patton Lady Agnes 1054 CAF

BW	205-DAY	RATIO	365-DAY	RATIO
78	841	117	N/A	N/A

Performance	
BW	+2.8
WW	+4.6
YW	+8.2
MILK	+2.5

The dam of this bull is a past

ROV Senior Champion

Female of the Year and the grandam is the many-time cow/calf champion Patton Lady Agnes 913.

267

La Grand Gold Wing J400

Birth Date: 1-28-2004 Bull 14920682 Tattoo: 400

#Krugerrand of Donamere 490
FAR Krugerrand 410H
13498476 #FAR Erianna 286F

#CH Stacker 7040
Donamere Bachel Beauty 288
#+GMAR Hi Spade 039
FAR Erianna 481D

#Bon View New Design 878
JAS Blackbird 203
14333348 +Toeppen Blackbird 074K

#B/R New Design 036
Bon View Gammer 85
#+GDAR SVF Traveler 234D
OCC Blackbird 773C

BW	205-DAY	RATIO	365-DAY	RATIO
76	811	103	N/A	N/A

Performance	
BW	+1.0
WW	+5.4
YW	+9.9
MILK	+2.8

Ultrasound	
%IMF	-1.02
RE	+1.07
FAT	+0.012
%RP	-1.1

268

LaGrand 410H Krug 4377

Birth Date: 2-7-2004 Bull 14682369 Tattoo: 4377

#Krugerrand of Donamere 490
FAR Krugerrand 410H
13498476 #FAR Erianna 286F

#CH Stacker 7040
Donamere Bachel Beauty 288
#+GMAR Hi Spade 039
FAR Erianna 481D

S/C Sleep Easy E369
Summitcrest Missie 4L61
13908597 Summitcrest Missie 2F55

#+GAR Sleep Easy 1009
Summitcrest Blackbird A308
#Finks 5522-6148
#Summitcrest Missie 1C24

BW	205-DAY	RATIO	365-DAY	RATIO
107	745	104	1329	106

Performance	
BW	+5.1
WW	+5.3
YW	+9.8
MILK	+2.3

Ultrasound	
%IMF	+0.02
RE	+0.05
FAT	+0.099
%RP	-1.38

This bull ranks in the top two

percent among non-parent bulls for both Weaning Weight EPD and Yearling Weight EPD earning individual weaning and yearling ratios of 104 and 106 respectively as the first calf from a dam from the Missie family, sired by the National Western Grand Champion Bull FAR Krugerrand 410H who was a featured LaGrand herd sire and a member of the Genex/CRI A.I. stud.



SVF GDAR 216 LTD - The sire of Lots 262 through 265.

LAGRAND HIGH-PERFORMANCE BULLS



LAGRAND FREEDOM BAND 415 - Lot 269

269 LaGrand Freedom Band 415

Birth Date: 1-22-2004 Bull 14765194 Tattoo: 415

Connealy Forefront #Connealy Frontline
TC Freedom 104 Eileen Heartland Conanga6443
13977765 #TC Ruby 9095 #TC Stockman 365
#TC Ruby 4068

#Bon View Bando 598 #Tehama Bando 155
WTR 598-8071 Miss Wix 141 #Bon View Dora 56
+13871733 +VDAR Miss Wix 8071 #PAPA Durabull 9805
+VDAR Miss Wix 4015

Performance	
BW	+1.7
WW	+4.5
YW	+1.79
MILK	+2.6

Maternal	
%IMF	+1.01
RE	+1.16
FAT	+1.003
%RP	+1.07

BW	205-DAY	RATIO	365-DAY	RATIO
80	794	101	1191	98

A son of the popular TC Freedom 104 with an individual birth ratio of 94 combined with an individual weaning ratio of 101 from the herd sire producing Miss Wix family. The dam of this bull is backed by the Pathfinder Sires Bon View Bando 598 and PAPA Durabull 9805.



LAGRAND EASY UPGRADE 4223 - Lot 271

271 LaGrand Easy Upgrade 4223

Birth Date: 1-18-2004 Bull 14682210 Tattoo: 4223

+Northern Improvement 4480 GF #TC Stockman 365
Ayres Pascalar Easy Upgrade Blackcap of RR 5367
13884815 #Pascalar Barbara P207 #+GAR Sleep Easy 1009
Pascalar Barbara P95

#GDAR SVF Traveler 234D #Traveler 124 GDAR
Roth Forever Lady 2746 +GDAR Forever Lady 718
+14179399 Ponderosa Forever Lady 127 #Connealy Dateline
+SVF Forever Lady 0508

Performance	
BW	+1.5
WW	+4.1
YW	+1.81
MILK	+2.6

Maternal	
%IMF	+1.04
RE	+1.04
FAT	+1.003
%RP	+1.02

BW	205-DAY	RATIO	365-DAY	RATIO
78	735	103	1385	110

A son of the popular champion Ayres Pascalar Easy Upgrade with an individual birth ratio of 96 balanced with individual weaning and yearling ratios of 103 and 110 respectively along with an individual IMF ratio of 106 produced as the first calf from a dam by GDAR SVF Traveler 234D. This bull is from the noted Forever family.

270 LaGrand Stockman 4976

Birth Date: 2-9-2004 Bull +14783033 Tattoo: 4976

#TC Stockman #+Leachman Prompter
TC Stockman 365 #TC Jestress 6004
#11994601 TC Pride 0014 #VDAR New Trend 315
#TC Pride 8013

#VDAR New Trend 315 #AAR New Trend
VDAR Beauty 3005 #VDAR Lucy 704
+11950267 VDAR Beauty 228 #Rito 2100 GDAR
#VDAR Beauty 930

Performance	
BW	+1.44
WW	+1.37
YW	+1.70
MILK	+1.22

Carcass	
CW	+1.9
MARB	+1.24
RE	+1.16
FAT	+1.021
%RP	+1.26

Maternal	
%IMF	+1.07
RE	+1.17
FAT	+1.011
%RP	+1.10

BW	205-DAY	RATIO	365-DAY	RATIO
103	746	ET	1180	ET

This bull from the herd sire producing Beauty family was produced in the embryo program by the Pathfinder Sire TC Stockman 365. The donor dam of this bull balances a progeny birth ratio of 98 with progeny weaning and yearling ratios of 102 and 104 respectively on five natural calves coupled with a progeny IMF ratio of 107 on 40 head.

272 LaGrand Easy Upgrade 4262

Birth Date: 1-22-2004 Bull 14682282 Tattoo: 4262

+Northern Improvement 4480 GF #TC Stockman 365
Ayres Pascalar Easy Upgrade Blackcap of RR 5367
13884815 #Pascalar Barbara P207 #+GAR Sleep Easy 1009
Pascalar Barbara P95

#Rockn D Ambush 1531 #Paramont Ambush 2172
Roth Lass 2039 MS Blackcap Band of RD 1301
14134823 +NFC Lass J98 #SAF Fame
#+Leachman Lass 2204

Performance	
BW	-1.5
WW	+4.0
YW	+1.73
MILK	+1.8

Maternal	
%IMF	+1.14
RE	+1.13
FAT	+1.004
%RP	+1.02

BW	205-DAY	RATIO	365-DAY	RATIO
67	701	98	1259	100

A moderate birth weight herd sire prospect by a many-time champion sire from a dam sired by Rockn D Ambush 1531 with a stacked calving-ease pedigree. The third dam is a Pathfinder Dam.

S Ayres Pascalar Easy Upgrade

Birth Date: 4-1-2001 Bull 13884815 Tattoo: 291

#TC Stockman 365 #TC Stockman
Northern Improvement 4480 GF TC Pride 0014
+13054003 Blackcap of RR 5367 RR Vantage 3352
Blackcap of RR 0238

#+GAR Sleep Easy 1009 #Tehama Bando 155
Pascalar Barbara P207 Blackclass GAR 103
#12814770 Pascalar Barbara P95 #+JR Juice 2005
Pascalar Barbaramere P19

Performance	
BW	-1.3
WW	+3.8
YW	+1.73
MILK	+2.7

Carcass	
CW	+1.4
MARB	+1.25
RE	+1.06
FAT	+1.010
%RP	+1.12

Maternal	
%IMF	+1.11
RE	+1.09
FAT	+1.006
%RP	+1.02

FOR REFERENCE ONLY.
This exciting LaGrand herd sire concluded a successful show career as the 2003 Mid-South ROV Senior Champion Bull and the 2004 National Western Reserve Senior Champion. His sire, Northern Improvement 4480 GF sold one third interest for \$75,000 and he is a past National Western Reserve Grand Champion Bull who sired numerous champions. The Pathfinder Dam of this bull is backed by the high marbling and high maternal genetics of the Pathfinder Sire GAR Sleep Easy 1009 and JR Juice 2005.



AYRES PASCALAR EASY UPGRADE - Reference Sire S

273 LaGrand Easy Upgrade 4423

Birth Date: 2-14-2004 Bull 14682046 Tattoo: 4423

+Northern Improvement 4480 GF #TC Stockman 365
Ayres Pascalar Easy Upgrade Blackcap of RR 5367
13884815 #Pascalar Barbara P207 #+GAR Sleep Easy 1009
Pascalar Barbara P95

Koupals B&B Rainmaker 9020 #Sitz SLS Rainmaker 7596
Roth Miss Traveler 1154 Koupal Blackcap 501
13841644 +ALC Miss Traveler 15H +GDAR SVF Russ 184B
+ALC Miss Traveler 102G

This bull is from the herd sire
producing Evergreen family
and sired by a popular champion sire.

The maternal grandsire of this bull is a past ROV Show Bull of the Year for LaGrand
Angus Ranch.

Performance	
BW	+1.17
WW	+37
YW	+77
MILK	+24

Ultrasound	
%IMF	+1.04
RE	+1.22
FAT	+1.005
%RP	+1.21

BW	205-DAY	RATIO	365-DAY	RATIO
N/A	656	92	1210	96

273A LaGrand Equator 4985

Birth Date: 3-16-2004 Bull +14783965 Tattoo: 4985

BW	205-DAY	RATIO	365-DAY	RATIO
86	681	ET	1135	ET

Ultrasound	
%IMF	+1.01
RE	+1.19
FAT	+1.018
%RP	+1.26

273B LaGrand Equator 4986

Birth Date: 3-9-2004 Bull +14783966 Tattoo: 4986

#+PAPA Power 096 #Cottontail Maternal POWER464
PAPA Equator 2928 Blackbird DHD 2816
#11788302 #PAPA Envious Blackbird 8849 PAPA Rito Traveler 4807
Envious Blackbird DHD 5848

#Hoff Esso SC 433 (R) #Perryville Esso Extra 17M
Double G Esso Lena 047 Hoff Scotch Cap 454
11481872 Double G Distinctive Lena Double G Hi Distinction
Double G Lenas Lucy 4144

A pair of flush brothers
blending the high growth
genetics of PAPA Equator 2928 with the high marbling genetics of Hoff Esso SC 433.

BW	205-DAY	RATIO	365-DAY	RATIO
84	661	ET	1058	ET

Performance	
BW	+4.3
WW	+35
YW	+71
MILK	+11

Carcass	
CW	+1.21
MARB	+1.09
RE	+1.20
FAT	+1.018
%RP	+1.18

Ultrasound	
%IMF	+1.0
RE	+1.26
FAT	+1.016
%RP	+1.33

274 LaGrand Limited Edition 4201

Birth Date: 1-16-2004 Bull 14700333 Tattoo: 4201

Hoff Charger SC 242 SAR Supercharger 8418
Hoff Limited Edition SC 594 Hoff Miss Flyer SC E01
13119152 Hoff Boss Lady SC 3V9 Hoff Trail Boss SC 929
#Hoff Starlette SC 441

#+Leachman Right Time #N Bar Emulation EXT
Roth Elba 8017 Leachman Erica 0025
13171621 Fairview Elba 6155 +Ginger Hill 6807 Traveler 23 (GDF)
Fairview Elba 3032

A son of the high-perform-
ance sire Hoff Limited
Edition SC 594 from a dam by the Pathfinder Sire Leachman Right Time.

BW	205-DAY	RATIO	365-DAY	RATIO
106	673	94	1211	96

Performance	
BW	+5.5
WW	+41
YW	+80
MILK	+16

Carcass	
CW	+1.10
MARB	+1.00
RE	+1.15
FAT	+1.010
%RP	+1.15

Ultrasound	
%IMF	+1.04
RE	+1.16
FAT	+1.002
%RP	+1.05



LAGRAND LIMITED EDITION 4201 - Lot 274

274A La Grand Famous 441

Birth Date: 3-29-2004 Bull +14828458 Tattoo: 441

BW	205-DAY	RATIO	365-DAY	RATIO
85	721	ET	N/A	N/A

274B La Grand Famous 442

Birth Date: 3-29-2004 Bull +14828459 Tattoo: 442

BW	205-DAY	RATIO	365-DAY	RATIO
84	695	ET	1060	ET

274C La Grand Famous 443

Birth Date: 3-29-2004 Bull +14828460 Tattoo: 443

#SAF Fame #Minerts Fortune 2000
Famous 7001 #+SAF Royal Lass 1027
#12829336 TK Karen 1369 #AAR New Trend
#VDAR Karen 978

+GDAR SVF Russ 184B #GDAR Executive 727
Broken Arrow Roth Wendy 903 +GDAR Forever Lady 719
13345668 +HR Wendy 605 #OCC Maternal Trend 725Y
KMR Wendy 508

This trio of flush brothers are
by the now-deceased
champion Famous 7001 from a proven donor dam by the rare growth sire GDAR SVF
Russ 184B.

BW	205-DAY	RATIO	365-DAY	RATIO
89	663	ET	1129	ET

Performance	
BW	+5.1
WW	+44
YW	+82
MILK	+19

Carcass	
CW	+1.13
MARB	+1.18
RE	+1.24
FAT	+1.001
%RP	+1.12

Ultrasound	
%IMF	+1.05
RE	+1.04
FAT	+1.017
%RP	+1.13

274D LaGrand Special Design 4541

Birth Date: 3-30-2004 Bull +14682274 Tattoo: 4541

#Bon View New Design 878 #B/R New Design 036
WCC Special Design L309 Bon View Gammer 85
+13846942 N Bar Primrose 242 #Emulation 31 (FX)
Primrose N Bar 9962

#DHD Traveler 6807 #QAS Traveler 23-4
Rita 415 of 1G24 6807 #Bemindful Maid DHD 0807
#12077893 LB 8E8 Emulation Lucy 211 #Rito 8E8 of 5H11 Traveler
LB Emulation Lucy 621

This son of the LaGrand fea-
tured herd sire WCC
Special Design L309 was produced in the LaGrand embryo program from an out-
standing Pathfinder Dam by DHD Traveler 6807.

BW	205-DAY	RATIO	365-DAY	RATIO
89	694	ET	1219	ET

Performance	
BW	+1.21
WW	+43
YW	+79
MILK	+19

Ultrasound	
%IMF	+1.12
RE	+1.06
FAT	+1.010
%RP	+1.20

274E La Grand Sharpie 447

Birth Date: 4-6-2004 Bull 14765218 Tattoo: 447

#GAR Precision 1680 #Tehama Bando 155
Twin Valley Precision E161 (FR) 9J9 GAR 856
#12346200 +WCC Blackcap C9 (R) #SS Traveler 6T6
Premier Blackcap 6276A (R)

#GDAR Traveler 71 #Traveler 1148 GDAR
RA Juanada Traveler GDAR Miss Blackcap 567
+14032383 BT Juanada Viking 125Z Montana Power 837 PJM
Sharpshooter 314 PJM

This son of the now-
deceased Genex/CRI sire
Twin Valley Precision E161 was produced from a dam by the high maternal Pathfinder
Sire GDAR Traveler 71.

BW	205-DAY	RATIO	365-DAY	RATIO
84	697	92	N/A	N/A

Performance	
BW	+2.6
WW	+30
YW	+66
MILK	+26

Carcass	
CW	+1.11
MARB	+1.11
RE	+1.20
FAT	+1.006
%RP	+1.02

274F LaGrand Makers Mark 4478

Birth Date: 2-28-2004 Bull 14682124 Tattoo: 4478

#Famous 7001 #SAF Fame
Davis Makers Mark 0287 TK Karen 1369
+13855449 Hyline Ellen 410 #Hyline Travel Agent
#Hyline Ellen 9062

#Twin Valley Precision E161 (FR) #GAR Precision 1680
Pride Lucy of Holiday 1054 +WCC Blackcap C9 (R)
+13798042 Hyline Pride Lucy 136 #QAS Traveler 23-4
Hyline Pride Lucy 9060

This grandson of the noted
sires Famous 7001 and
Twin Valley Precision E161 is from the herd sire producing Pride Lucy family.

BW	205-DAY	RATIO	365-DAY	RATIO
93	681	94	1143	90

Performance	
BW	+3.1
WW	+36
YW	+67
MILK	+15

Ultrasound	
%IMF	+1.06
RE	+1.19
FAT	+1.006
%RP	+1.41

LAGRAND YEARLING HEIFERS



STEVENSON PRIDE LADY 6368 - The \$42,000 Pathfinder Dam of Lot 275.

275 LaGrand Pride Lady H462

Birth Date: 1-20-2004 Cow +14741815 Tattoo: H462

#N Bar Emulation EXT #Emulation N Bar 5522
GAR EXT 4344 N Bar Primrose 2424
+12304172 +GAR Scotch Cap 509 Rita 5H11 of 1B14 Rito 9J9

#Basin Ambush 3905 (FR) #Paramont Ambush 2172
Stevenson Pride Lady 6368 Basin Heather Bloom 48C (R)
#13036393 Stevenson Pride Lady 4066 #Basin Rainmaker 2844
+Stevenson Pride Lady 353D

BW	205-DAY	RATIO	365-DAY	RATIO
90	621	ET	911	ET

276 LaGrand Lady 4130

Birth Date: 1-7-2004 Cow 14686230 Tattoo: 4130

#N Bar Emulation EXT #Emulation N Bar 5522
GAR EXT 4344 N Bar Primrose 2424
+12304172 +GAR Scotch Cap 509 Rita 5H11 of 1B14 Rito 9J9

+SAR Executive 389B #GDAR Executive 727
SAR Executive Lady 13 +Fairfield Elba B16
12453605 #SAR Renovators Lady 6742 #+Oneills Renovator
#SAF Black Lady 177

BW	205-DAY	RATIO	365-DAY	RATIO
70	685	111	983	103

277 LaGrand Lady 4131

Birth Date: 1-7-2004 Cow 14686231 Tattoo: 4131

#N Bar Emulation EXT #Emulation N Bar 5522
GAR EXT 4344 N Bar Primrose 2424
+12304172 +GAR Scotch Cap 509 Rita 5H11 of 1B14 Rito 9J9

+SAR Executive 389B #GDAR Executive 727
SAR Executive Lady 13 +Fairfield Elba B16
12453605 #SAR Renovators Lady 6742 #+Oneills Renovator
#SAF Black Lady 177

BW	205-DAY	RATIO	365-DAY	RATIO
77	562	91	935	98



VDAR LUCY 425 - The Pathfinder granddam of Lot 283.



BT SUSANNA 290J - The dam of Lots 278, 279 and 280.

278 LaGrand Susanna 4740

Birth Date: 2-14-2004 Cow +14876827 Tattoo: 4740

BW	205-DAY	RATIO	365-DAY	RATIO
98	644	ET	932	ET

279 LaGrand Susanna 4746

Birth Date: 2-13-2004 Cow +14876829 Tattoo: 4746

BW	205-DAY	RATIO	365-DAY	RATIO
86	537	ET	753	ET

280 LaGrand Susanna 4752

Birth Date: 2-16-2004 Cow +14876831 Tattoo: 4752

#GAR Precision 1680 #Tehama Bando 155
JLB Exacto 416 9J9 GAR 856
#12223258 +Brost Burgess 041 #Hoff Hi Spade SC 491
Partisover Burgess 527

Top Secret 9757 EAR Traveler Power 137 EAR
BT Susanna 290J #RM Black Magic 7574 EAR
+13418350 Susanna of CH 3030 #Rito 054 GDAR
#Susanna of Cedar Hills 907

BW	205-DAY	RATIO	365-DAY	RATIO
92	637	ET	872	ET

281 LaGrand Forever Lady 4847

Birth Date: 2-17-2004 Cow +14833295 Tattoo: 4847

BW	205-DAY	RATIO	365-DAY	RATIO
70	508	ET	825	ET

282 LaGrand Forever Lady 4850

Birth Date: 2-18-2004 Cow +14815517 Tattoo: 4850

#GAR Precision 1680 #Tehama Bando 155
JLB Exacto 416 9J9 GAR 856
#12223258 +Brost Burgess 041 #Hoff Hi Spade SC 491
Partisover Burgess 527

#Connealy Dateline #DHD Traveler 6807
Ponderosa Forever Lady 127 #Eila Eila of Conanga
12855885 +SVF Forever Lady 0508 #+Skarship Saratoga
#Forever Lady 163 GDAR

BW	205-DAY	RATIO	365-DAY	RATIO
72	607	ET	861	ET

283 LaGrand Lucy 4257

Birth Date: 1-21-2004 Cow 14687373 Tattoo: 4257

#GAR Precision 1680 #Tehama Bando 155
Whitstone Precision H141 9J9 GAR 856
12527924 +Rita 3X11 of Rita 0FB4 EXT #N Bar Emulation EXT
+Rita 0FB4 of 5H11 Fullback

#Traveler 1148 GDAR #QAS Traveler 23-4
North Fork Lucy 1003 #Blackcap Forever 485 GDAR
+14052769 #VDAR Lucy 425 #VDAR New Trend 315
+VDAR Lucy 920

BW	205-DAY	RATIO	365-DAY	RATIO
78	698	107	1090	113

Performance	
BW	+2.4
WW	+4.4
YW	+8.2
MILK	+1.5

Carass	
CW	+1
MARB	+1.10
RE	+1.11
FAT	+0.026
%RP	+1.16

Ultrason	
%IMF	+1.10
RE	+1.26
FAT	+1.007
%RP	+1.13

Performance	
BW	+4.5
WW	+3.8
YW	+6.9
MILK	+1.2

Ultrason	
%IMF	+1.03
RE	+1.44
FAT	+1.014
%RP	+1.23

Performance	
BW	+4.5
WW	+3.8
YW	+6.9
MILK	+1.2

Ultrason	
%IMF	+1.03
RE	+1.44
FAT	+1.014
%RP	+1.23

Performance	
BW	+3.5
WW	+3.9
YW	+7.4
MILK	+2.5

Carass	
CW	+1.2
MARB	+1.00
RE	+1.36
FAT	+1.010
%RP	+1.16

Ultrason	
%IMF	+1.03
RE	+1.20
FAT	+1.0
%RP	+1.10

Performance	
BW	+3.0
WW	+3.8
YW	+7.3
MILK	+2.6

Carass	
CW	+1.7
MARB	+1.04
RE	+1.50
FAT	+1.003
%RP	+1.38

Ultrason	
%IMF	+1.10
RE	+1.10
FAT	+1.018
%RP	+1.23

Performance	
BW	+8
WW	+41
YW	+84
MILK	+26

Carass	
CW	+4
MARB	+1.21
RE	+1.06
FAT	+1.009
%RP	+1.11

Ultrason	
%IMF	+1.10
RE	+1.52
FAT	+1.018
%RP	+1.31

LAGRAND YEARLING HEIFERS

284 LaGrand Bemindful Maid 4549

Birth Date: 5-1-2004 Cow +14827170 Tattoo: 4549
 Rito 616 of 4B20 6807 #DHD Traveler 6807
 Rito 111 of 2536 Rito 616 +Rita 4B20 of OFB1 Bando
 +13793825 GAR Precision 2536 #GAR Precision 1680
 +GAR EXT 2104

BW	+4.8
WW	+4.9
YW	+9.5
MILK	+1.9

#PAPA Equator 2928 #+PAPA Power 096
 PAPA Bemindful Maid 6024 #PAPA Envious Blackbird 8849
 12662956 PAPA Bemindful Maid PLD 206 #PAPA Rito T Intense DHD 6844
 PAPA Bemindful Maid 8868

BW	205-DAY	RATIO	365-DAY	RATIO
84	756	ET	N/A	N/A



PAPA BEMINDFUL MAID 6024 -
The dam of Lot 284.

285 LaGrand Primrose 4539

Birth Date: 3-26-2004 Cow 14709443 Tattoo: 4539
 #B/R New Design 036 #VDAR New Trend 315
 GAR Prime Design B/R Blackcap Empress 76
 +14011547 +GAR Precision 1928 #GAR Precision 1680
 +GAR EXT 614

BW	+2.3
WW	+3.6
YW	+1.7
MILK	+1.9

#Connealy Dateline #DHD Traveler 6807
 CRR Primrose J107 #Eila Eila of Conanga
 13348507 WCC Primrose D250 +Leachman Cimmarron
 N Bar Primrose 2424

BW	205-DAY	RATIO	365-DAY	RATIO
81	559	85	873	90

CW	+1.8
MARB	+1.24
RE	+1.47
FAT	-1.007
%RP	+3.36

289 LaGrand Starlette 4065

Birth Date: 1-9-2004 Cow 14682125 Tattoo: 4065
 #Twin Valley Precision E161 (FR) #GAR Precision 1680
 WCC Precision E161 J239 +WCC Blackcap C9 (R)
 +13806971 N Bar Primrose 2424 #Emulation 31 (FX)
 Primrose N Bar 9962

BW	+2.9
WW	+3.6
YW	+1.9
MILK	+1.5

+GAR EXT 4344 #N Bar Emulation EXT
 Roth Starlette 2181 +GAR Scotch Cap 509
 14134760 Fairview Starlette 6124 #Leachman Conveyor
 Innway MS Lone Star 851

BW	205-DAY	RATIO	365-DAY	RATIO
72	615	94	962	99

CW	+1.12
MARB	+1.09
RE	+1.21
FAT	+0.009
%RP	-1.01

%IMF	+1.4
RE	+1.55
FAT	+0.012
%RP	+1.41

286 LaGrand Pride Lucy 4965

Birth Date: 3-9-2004 Cow +14787666 Tattoo: 4965
 #Tehama Bando 155 #Band 234 of Ideal 3163
 GAR Precision 1680 Tehama Blackcap G373
 #11520398 9J9 GAR 856 #Rito 9J9 of B156 7T26
 Blackbird GAR 833

BW	+1.5
WW	+2.7
YW	+1.58
MILK	+1.21

#Hyline New Trend 382 #VDAR New Trend 315
 Hyline Pride Lucy 611 Lucy of Hyline 8024
 12633333 Hyline Lucy 442 #Hyline Travel Agent
 Hyline Lucy 549

BW	205-DAY	RATIO	365-DAY	RATIO
70	532	ET	810	ET

CW	+1.11
MARB	+1.27
RE	+1.31
FAT	-1.007
%RP	+1.26

%IMF	+1.23
RE	+1.28
FAT	-1.004
%RP	+1.26

290 LaGrand Erica 4219

Birth Date: 1-17-2004 Cow 14700334 Tattoo: 4219
 Hoff Charger SC 242 SAR Supercharger 8418
 Hoff Limited Edition SC 594 Hoff Miss Flyer SC E01
 13119152 Hoff Boss Lady SC 3V9 Hoff Trail Boss SC 929
 #Hoff Starlette SC 441

BW	+6.5
WW	+4.6
YW	+8.5
MILK	+1.8

#+Leachman Right Time #N Bar Emulation EXT
 North Fork Erica 18 Leachman Erica 0025
 +13821278 Erica 4210 BCBR #OCC Maternal Trend 725Y
 Erica 882 BCBR

BW	205-DAY	RATIO	365-DAY	RATIO
102	651	99	984	101

CW	+1.12
MARB	+1.04
RE	+1.14
FAT	-1.009
%RP	+1.09

287 LaGrand Wendy 4458

Birth Date: 2-22-2004 Cow +14693179 Tattoo: 4458
 #N Bar Emulation EXT #Emulation N Bar 5522
 Leachman Right Time N Bar Primrose 2424
 +11750711 Leachman Erica 0025 #Tehama Bando 155
 Leachman Erica 8058

BW	+3.6
WW	+4.5
YW	+8.3
MILK	+1.16

+GDAR SVF Russ 184B #GDAR Executive 727
 Broken Arrow Wendy 038 +GDAR Forever Lady 719
 +13608172 HR Wendy 618 #Bon View Bando 598
 +HR Wendy 402

BW	205-DAY	RATIO	365-DAY	RATIO
78	560	ET	906	ET

CW	+1.11
MARB	-1.08
RE	+1.13
FAT	+1.008
%RP	-1.06

%IMF	+1.06
RE	-1.06
FAT	+1.014
%RP	-1.27

291 LaGrand Betty 4163

Birth Date: 1-12-2004 Cow 14693142 Tattoo: 4163
 #PAPA Universe 515 #PAPA Equator 2928
 GDA Universe 726G PLD Eriskay PAPA 011
 +12787056 +GDA Bonny 412D #+GDAR Oscar 711
 BP Bonny 820

BW	+5.5
WW	+4.1
YW	+7.1
MILK	+1.5

#+Woodhill Centurion #+GDAR Oscar 711
 Fairview Betty 6236 #GT Miss Traveler 58
 12594275 Fairview Betty 3283 PAPA 8849 Optima 1944
 +Inniway Hoss Betty 702

BW	205-DAY	RATIO	365-DAY	RATIO
100	640	98	936	97

CW	+1.10
MARB	+1.19
RE	+1.13
FAT	-1.005
%RP	+1.11

%IMF	+1.08
RE	+1.33
FAT	+1.012
%RP	+1.16

288 LaGrand Miss Traveler 4961

Birth Date: 3-4-2004 Cow +14775617 Tattoo: 4961
 #+Leachman Right Time #N Bar Emulation EXT
 Hyline Right Time 338 Leachman Erica 0025
 13058662 Hyline Pride 265 +Hyline SVF Traveler 0115
 Hyline Pride 870

BW	+3.9
WW	+5.5
YW	+10.2
MILK	+1.24

+GDAR SVF Russ 184B #GDAR Executive 727
 ALC Miss Traveler 15H +GDAR Forever Lady 719
 +13340744 +Alc Miss Traveler 102G #Traveler 1148 GDAR
 +Car Don Miss Traveler B226

BW	205-DAY	RATIO	365-DAY	RATIO
74	522	ET	815	ET

CW	+1.2
MARB	-1.05
RE	+1.02
FAT	+1.003
%RP	-1.05

%IMF	+1.12
RE	+1.23
FAT	+1.002
%RP	+1.0



ALC MISS TRAVELER 15H - The dam of Lot 288.

LAGRAND YEARLING HEIFERS

292 LaGrand Eileen Lass 4852

Birth Date: 2-24-2004 Cow +14815519 Tattoo: 4852
 #B/R New Design 036 #VDAR New Trend 315
 B/V New Design 1407 B/R Blackcap Empress 76
 #12783540 Bon View Pride 664 #+GAR Sleep Easy 1009
 #Bon View Pride 1551
 +GDAR SVF Russ 184B #GDAR Executive 727
 Broken Arrow Roth MS RUSS814 +GDAR Forever Lady 719
 13047374 #Broken Arrow Eileenlass 75 #+VDAR New Trend 802
 LS Eileen Lass 51

BW	205-DAY	RATIO	365-DAY	RATIO
92	576	ET	795	ET

Performance	
BW	+2.8
VW	+1.47
YW	+1.89
MILK	+1.27

Carcass	
CW	1.4
MARB	+1.27
RE	+1.08
FAT	-1.005
%RP	+1.19

Ultrason	
%IMF	+1.20
RE	+1.18
FAT	+1.010
%RP	-1.01

297 LaGrand Rita 4183

Birth Date: 1-14-2004 Cow 14682287 Tattoo: 4183
 #B/R New Design 323 #B/R New Design 036
 P/V New Horizon 001 B/R Ruby of Tiffany 155
 +13606093 Hyline Ellen 410 #Hyline Travel Agent
 #Hyline Ellen 9062
 +Circle A 216 LTD 6563 #+SVF GDAR 216 LTD
 Roth Rita 061 #Circle A Rita 5H11 3201
 13556352 #Rita 415 of 1G24 6807 #DHD Traveler 6807
 LB 8E8 Emulation Lucy 211

BW	205-DAY	RATIO	365-DAY	RATIO
75	546	83	959	98

Performance	
BW	+1.6
VW	+3.2
YW	+1.75
MILK	+1.2

Carcass	
CW	+1.9
MARB	+1.01
RE	+1.39
FAT	-1.029
%RP	+1.65

Ultrason	
%IMF	+1.0
RE	+1.26
FAT	-1.015
%RP	+1.39

293 LaGrand Forever Lady 4149

Birth Date: 1-10-2004 Cow 14682318 Tattoo: 4149
 #Bon View New Design 878 #B/R New Design 036
 WCC Special Design L309 Bon View Gammer 85
 +13846942 N Bar Primrose 2424 #Emulation 31 (FX)
 Primrose N Bar 9962
 #+GDAR Rolls Royce 203 #+GDAR Royce 131
 Roth Forever Lady 158 +GDAR Forever Lady 719
 +13906487 +Circle A Forever Lady 6173 #GDAR Traveler 71
 +B&M Forever Lady 031

BW	205-DAY	RATIO	365-DAY	RATIO
87	709	108	991	102

Performance	
BW	+4.1
VW	+5.3
YW	+1.88
MILK	+2.3

298 LaGrand Forever 4283

Birth Date: 1-24-2004 Cow 14682320 Tattoo: 4283
 #B/R New Design 323 #B/R New Design 036
 P/V New Horizon 001 B/R Ruby of Tiffany 155
 +13606093 Hyline Ellen 410 #Hyline Travel Agent
 #Hyline Ellen 9062
 #Sitz SLS Rainmaker 7596 #GDAR Rainmaker 340
 North Fork Forever 1049 SLS Barbara Perfection 2571
 +14052779 +Jolly R Forever Z008 #Candolier Forever 376
 MG S Black Diamond

BW	205-DAY	RATIO	365-DAY	RATIO
83	644	98	985	101

Performance	
BW	+3.7
VW	+3.8
YW	+1.75
MILK	+2.0

Carcass	
CW	+1.0
MARB	-1.01
RE	+1.16
FAT	-1.001
%RP	+1.19

Ultrason	
%IMF	-1.21
RE	+1.23
FAT	+1.002
%RP	+1.11

294 LaGrand Hyalite 4076

Birth Date: 1-2-2004 Cow 14682148 Tattoo: 4076
 #B/R New Design 036 #VDAR New Trend 315
 Bon View New Design 878 B/R Blackcap Empress 76
 #13062750 Bon View Gammer 85 #Bon View Bando 598
 Bon View Gammer 233
 QLC Stats 060J #+Krugerrand Merger 34 (FR)
 Roth Hyalite 2214 #QLC B17 Evilina X516A
 14134795 +Roth Hyalite 9506 VDAR New Trend 913
 +VDAR Hyalite 5198

BW	205-DAY	RATIO	365-DAY	RATIO
66	670	102	964	99

Performance	
BW	+1.2
VW	+4.0
YW	+1.78
MILK	+2.9

Carcass	
CW	+1.2
MARB	+1.18
RE	+1.07
FAT	+1.010
%RP	-1.07

Ultrason	
%IMF	-1.04
RE	+1.45
FAT	+1.004
%RP	+1.36

299 LaGrand Wilma 4300

Birth Date: 1-26-2004 Cow 14682357 Tattoo: 4300
 #B/R New Design 323 #B/R New Design 036
 P/V New Horizon 001 B/R Ruby of Tiffany 155
 +13606093 Hyline Ellen 410 #Hyline Travel Agent
 #Hyline Ellen 9062
 +Stevenson Maximum 42C #GT Maximum
 Stevenson Wilma 679G JRS Elga 495R
 12810504 #JRS Waterback 462B #Basin Emulation 5653
 #JRS Waterback 957Z

BW	205-DAY	RATIO	365-DAY	RATIO
99	742	113	1059	109

Performance	
BW	+5.2
VW	+5.0
YW	+1.86
MILK	+1.7

Carcass	
CW	+1.7
MARB	+1.02
RE	+1.28
FAT	-1.006
%RP	+1.31

Ultrason	
%IMF	-1.18
RE	+1.05
FAT	-1.005
%RP	+1.0

295 LaGrand Ellen 4334

Birth Date: 1-31-2004 Cow 14682267 Tattoo: 4334
 #B/R New Design 036 #VDAR New Trend 315
 Bon View New Design 878 B/R Blackcap Empress 76
 #13062750 Bon View Gammer 85 #Bon View Bando 598
 Bon View Gammer 233
 #SAF Fame #Minerts Fortune 2000
 North Fork Ellen 32 #+SAF Royal Lass 1027
 +13821281 Hyline Ellen 501 #Hyline Travel Agent
 #Hyline Ellen 9062

BW	205-DAY	RATIO	365-DAY	RATIO
97	620	95	953	98

Performance	
BW	+4.2
VW	+4.2
YW	+1.78
MILK	+2.0

Carcass	
CW	+1.9
MARB	+1.20
RE	+1.19
FAT	+1.014
%RP	-1.03

Ultrason	
%IMF	+1.04
RE	+1.20
FAT	+1.003
%RP	+1.17

300 LaGrand Formera 4318

Birth Date: 2-13-2004 Cow 14682227 Tattoo: 4318
 #B/R New Design 323 #B/R New Design 036
 P/V New Horizon 001 B/R Ruby of Tiffany 155
 +13606093 Hyline Ellen 410 #Hyline Travel Agent
 #Hyline Ellen 9062
 VNAR Fame 87G #SAF Fame
 Roth Formera 9199 VNARO Lass 4122-133D
 13273503 North Fork Formera 7069 #N Bar Emulation EXT
 North Fork Formera 5077

BW	205-DAY	RATIO	365-DAY	RATIO
81	626	96	973	100

Performance	
BW	+3.1
VW	+4.9
YW	+1.49
MILK	+1.4

Carcass	
CW	+1.5
MARB	+1.04
RE	+1.26
FAT	-1.003
%RP	+1.29

Ultrason	
%IMF	+1.0
RE	+1.36
FAT	+1.006
%RP	+1.17

296 LaGrand Maid Elsie 4102

Birth Date: 1-3-2004 Cow 14682209 Tattoo: 4102
 #B/R New Design 323 #B/R New Design 036
 P/V New Horizon 001 B/R Ruby of Tiffany 155
 +13606093 Hyline Ellen 410 #Hyline Travel Agent
 #Hyline Ellen 9062
 #Krugerrand of Donamere 490 #CH Stacker 7040
 Roth Maid Elsie 003 Donamere Bachel Beauty 288
 13553827 Fairview Maid Elsie 6095 #+Woodhill Centurion
 Fairview Maid Elsie 2063

BW	205-DAY	RATIO	365-DAY	RATIO
85	629	96	869	89

Performance	
BW	+2.9
VW	+4.0
YW	+1.71
MILK	+1.3

Carcass	
CW	+1.9
MARB	+1.08
RE	+1.28
FAT	-1.012
%RP	+1.34

Ultrason	
%IMF	-1.07
RE	+1.15
FAT	+1.006
%RP	+1.04

301 LaGrand Miss Shipp 4204

Birth Date: 1-16-2004 Cow 14768207 Tattoo: 4204
 #B/R New Design 323 #B/R New Design 036
 P/V New Horizon 001 B/R Ruby of Tiffany 155
 +13606093 Hyline Ellen 410 #Hyline Travel Agent
 #Hyline Ellen 9062
 Younkin Triumph 4966 Brusett Spectrum 62
 LaGrand Miss Shipp 0386 Younkin Rose 4952
 +14762936 GB Miss Shipp 2093 #GV Power Drive 7369
 GB Dynamite 1311

BW	205-DAY	RATIO	365-DAY	RATIO
98	715	109	1094	112

Performance	
BW	+5.9
VW	+4.8
YW	+1.90
MILK	+1.3

Carcass	
CW	+1.0
MARB	+1.06
RE	+1.23
FAT	-1.008
%RP	+1.23

LAGRAND YEARLING HEIFERS

302 LaGrand Lady Agnes 4412

Birth Date: 2-11-2004 Cow 14682354 Tattoo: 4412

#B/R New Design 323
PVF New Horizon 001
+13606093 Hyline Ellen 410

#B/R New Design 036
B/R Ruby of Tiffany 155
#Hyline Travel Agent
#Hyline Ellen 9062

#Famous 7001
Patton Roth Lady Agnes 915
+13398256 +Patton Lady Agnes 1054 CAF

#SAF Fame
TK Karen 1369
#TC Stockman
JFP Lady Agnes K 07

BW	205-DAY	RATIO	365-DAY	RATIO
99	702	107	1092	112

Performance	
BW	+5.8
WW	+46
YW	+89
MILK	+16

Carcass	
CW	+8
MARB	+13
RE	+29
FAT	+0.12
%RP	+36

307 LaGrand Lady Eraline 4521

Birth Date: 3-12-2004 Cow 14682196 Tattoo: 4521

#B/R New Design 323
La Grand Roth New Design2603
+14141822 +Bear MTN Forever Lady 601

#B/R New Design 036
B/R Ruby of Tiffany 155
#PAPA Equator 2928
#Blackcap Lady 384 GDAR

#Whitestone Widespread MB
LaGrand Lady Eraline 223
+14240119 Bear MTN Lady Eraline 302

#N Bar Emulation EXT
MB Rachel 2173
#Oneills Duke
+Oneills Eraline 100

BW	205-DAY	RATIO	365-DAY	RATIO
85	642	97	1040	104

Performance	
BW	+3.8
WW	+41
YW	+81
MILK	+18

303 LaGrand Beauty 4427

Birth Date: 2-14-2004 Cow 14682052 Tattoo: 4427

#B/R New Design 323
PVF New Horizon 001
+13606093 Hyline Ellen 410

#B/R New Design 036
B/R Ruby of Tiffany 155
#Hyline Travel Agent
#Hyline Ellen 9062

#VDAR Traveler 722
North Fork Beauty 5017
12388888 +VDAR Beauty 3029

#Traveler 1148 GDAR
VDAR Beauty 228
#VDAR New Trend 315
VDAR Shoshone Beauty 560

BW	205-DAY	RATIO	365-DAY	RATIO
66	563	89	906	93

Performance	
BW	+2.9
WW	+29
YW	+61
MILK	+18

Carcass	
CW	+3
MARB	+12
RE	+10
FAT	+0.00
%RP	+12

Ultrason	
%IMF	+0.01
RE	+1.7
FAT	+0.12
%RP	+0.02

308 LaGrand Miss EXT 4437

Birth Date: 2-18-2004 Cow 14682068 Tattoo: 4437

#N Bar Emulation EXT
La Grand Roth EXT 2705
+14138295 +Bear MTN Forever Lady 601

#Emulation N Bar 5522
N Bar Primrose 2424
#PAPA Equator 2928
#Blackcap Lady 384 GDAR

#+SAF 598 Bando 5175
R&D Miss Bando 5175-03
#13608129 Landmark Blackbird 3

#Bon View Bando 598
+SAF Royal Lass 1002
Landmark Handy Man
Landmark Miss El Pine 851

BW	205-DAY	RATIO	365-DAY	RATIO
72	685	105	941	97

Performance	
BW	+1.2
WW	+40
YW	+73
MILK	+23

Ultrason	
%IMF	+1.12
RE	+1.22
FAT	+0.018
%RP	+1.0

304 LaGrand Pride 3121

Birth Date: 10-25-2003 Cow 14649191 Tattoo: 3121

#B/R New Design 036
B/R Eclipse 1159
+13879829 B/R Ruby of Tiffany 155

#VDAR New Trend 315
B/R Blackcap Empress 76
VDAR Pine Drive 251
Tiffany BR

#Leachman Saughatchee 3000C
Lchmn BV Pride J3993
+13671394 Bon View Pride 664

#N Bar Emulation EXT
Leachman BC 7100
#+GAR Sleep Easy 1009
#Bon View Pride 1551

Performance	
BW	+4
WW	+26
YW	+60
MILK	+22

Carcass	
CW	+4
MARB	+19
RE	+22
FAT	+0.04
%RP	+33

Ultrason	
%IMF	+2.22
RE	+3.1
FAT	+0.11
%RP	+1.6

309 LaGrand MS EXT 4479

Birth Date: 2-29-2004 Cow 14682126 Tattoo: 4479

#N Bar Emulation EXT
La Grand Roth EXT 2705
+14138295 +Bear MTN Forever Lady 601

#Emulation N Bar 5522
N Bar Primrose 2424
#PAPA Equator 2928
#Blackcap Lady 384 GDAR

+Roth Bando 8029
Roth MS Bando 0232
13554042 +GAR Sleep Easy 629

#Rito 3B17 of 0G10 Bando
+DF Empress 6015
#+GAR Sleep Easy 1009
GAR New Trend 780

BW	205-DAY	RATIO	365-DAY	RATIO
90	703	106	993	99

Performance	
BW	+3.1
WW	+38
YW	+71
MILK	+22

Ultrason	
%IMF	+1.15
RE	+1.16
FAT	+0.014
%RP	+1.4

305 LaGrand Erica 4194

Birth Date: 1-16-2004 Cow 14682328 Tattoo: 4194

#B/R New Design 323
La Grand 2617
+14141828 +Bear MTN Forever Lady 601

#B/R New Design 036
B/R Ruby of Tiffany 155
#PAPA Equator 2928
#Blackcap Lady 384 GDAR

Roths Millcreek Unique
Roth Erica 1588
+13927257 DF Erica 4113

White Oak Precise 6002
#Mill Creek Karen
#GDAR Traveler 71
DF Erica 1112

BW	205-DAY	RATIO	365-DAY	RATIO
76	612	94	886	92

Performance	
BW	+1.3
WW	+30
YW	+60
MILK	+19

Ultrason	
%IMF	+1.16
RE	+0.1
FAT	+0.02
%RP	+0.05

310 LaGrand Lady EXT 4495

Birth Date: 3-4-2004 Cow 14682155 Tattoo: 4495

#N Bar Emulation EXT
La Grand Roth EXT 2705
+14138295 +Bear MTN Forever Lady 601

#Emulation N Bar 5522
N Bar Primrose 2424
#PAPA Equator 2928
#Blackcap Lady 384 GDAR

#Famous 7001
Roth Lady Famous 1054
13841532 Broken Arrow Roth MS Russ916

#SAF Fame
TK Karen 1369
+GDAR SVF Russ 184B
Ponderosa Mischief 1234

BW	205-DAY	RATIO	365-DAY	RATIO
90	657	99	1012	101

Performance	
BW	+4.4
WW	+40
YW	+80
MILK	+16

Ultrason	
%IMF	+1.18
RE	+1.11
FAT	+0.04
%RP	+0

306 LaGrand Dora 4185

Birth Date: 1-15-2004 Cow 14683504 Tattoo: 4185

#B/R New Design 323
La Grand Roth New Design2603
+14141822 +Bear MTN Forever Lady 601

#B/R New Design 036
B/R Ruby of Tiffany 155
#PAPA Equator 2928
#Blackcap Lady 384 GDAR

Koupals B&B Precision 0068
Roth Dora 2130
14134699 #Bon View Dora 1596

Whitestone Precision H141
Koupal Blackcap 501
Bon View Prospector 1933
Bon View Dora 904

BW	205-DAY	RATIO	365-DAY	RATIO
70	636	97	922	95

Performance	
BW	+1.5
WW	+36
YW	+73
MILK	+19

311 LaGrand Evergreen 4507

Birth Date: 3-7-2004 Cow 14682174 Tattoo: 4507

#N Bar Emulation EXT
La Grand Roth EXT 2705
+14138295 +Bear MTN Forever Lady 601

#Emulation N Bar 5522
N Bar Primrose 2424
#PAPA Equator 2928
#Blackcap Lady 384 GDAR

#+SVF GDAR 216 LTD
Baldridge Evergreen 120K
13698987 +Baldridge Evergreen 233G

#Traveler 124 GDAR
+GDAR Forever Lady 718
#Summitcrest Hi Flyer 3B18
+Woodhill Evergreen 130

BW	205-DAY	RATIO	365-DAY	RATIO
89	662	100	980	98

Performance	
BW	+3.6
WW	+44
YW	+80
MILK	+18

Ultrason	
%IMF	+1.20
RE	+1.26
FAT	+0.017
%RP	+0.03

LAGRAND YEARLING HEIFERS



We promise, we won't hold you up!

312 LaGrand Miss Countess 4466

Birth Date: 2-25-2004 **Cow** 14682105 **Tattoo:** 4466
 #PAPA Equator 2928 #PAPA Power 096
 La Grand Roth Equator 2661 #PAPA Envious Blackbird 8849
 +14178616 Bon View Pride 316 #Bon View Emulation EXT 473
 Bon View Pride 664

+Maple Lane Forever Ready 50 #N Bar Emulation EXT
 Roth Miss Countess 1583 +SVF Forever Lady 1120
 +13927256 #+Grubbs Miss Countess 252 #TC Dividend 963
 DG Miss Countess 535

BW	205-DAY	RATIO	365-DAY	RATIO
102	726	110	1124	112

Performance	
BW	+6.3
WW	+48
YW	+95
MILK	+22

Ultrason	
%IMF	+1.09
RE	+1.12
FAT	+1.003
%RP	-1.13

313 LaGrand Empress 4483

Birth Date: 2-29-2004 **Cow** 14682128 **Tattoo:** 4483
 #PAPA Equator 2928 #PAPA Power 096
 La Grand Roth Equator 2661 #PAPA Envious Blackbird 8849
 +14178616 Bon View Pride 316 #Bon View Emulation EXT 473
 Bon View Pride 664

#Famous 7001 #SAF Fame
 Roth Empress 1168 TK Karen 1369
 13841657 +Roth Empress 8028 #Rito 3B17 of OG10 Bando
 +DF Empress 6015

BW	205-DAY	RATIO	365-DAY	RATIO
108	782	118	1176	117

Performance	
BW	+8.1
WW	+53
YW	+96
MILK	+21

Ultrason	
%IMF	+1.03
RE	+1.32
FAT	+1.001
%RP	+1.06

314 LaGrand Blackbird 4958

Birth Date: 2-14-2004 **Cow** +14744506 **Tattoo:** 4958
 #Leachman Saughatchee 3000C #N Bar Emulation EXT
 LCC Big River 3499J Leachman BC 7100
 +13671407 Bon View Pride 664 #+GAR Sleep Easy 1009
 #Bon View Pride 1551

#+Krugerrand Merger 34 (FR) #Krugerrand of Donamere 490
 Patton Blackbird 804 YAF Ankony 5G00 Blackbird GC017
 13077443 Blackbird 691 Linda of YAF #+Brost Power Drive
 Blackbird Kay 91 of YAF

BW	205-DAY	RATIO	365-DAY	RATIO
86	560	ET	856	ET

Performance	
BW	+13.1
WW	+40
YW	+77
MILK	+22

Carass	
CW	+7
MARB	+1.01
RE	+1.32
FAT	+1.012
%RP	+1.42

Ultrason	
%IMF	-1.02
RE	+1.12
FAT	+1.009
%RP	-1.08

315 LaGrand Lucy 4253

Birth Date: 1-21-2004 **Cow** 14682262 **Tattoo:** 4253
 #Krugerrand of Donamere 490 #CH Stackler 7040
 FAR Krugerrand 410H Donamere Bachel Beauty 288
 13498476 #FAR Erianna 286F #+GMAR Hi Spade 039
 FAR Erianna 481D

+OSUDF Hyline Excel 4123 #Hyline Travel Agent
 Roth Lucy 0370 +DF Empress 6079
 13782106 +North Fork Lucy 6051 #VDAR New Trend 315
 VDAR Lucy 166

BW	205-DAY	RATIO	365-DAY	RATIO
65	524	80	849	87

Performance	
BW	+8
WW	+37
YW	+79
MILK	+17

Ultrason	
%IMF	+1.11
RE	+1.29
FAT	+1.001
%RP	+1.20

316 LaGrand Burgess 4422

Birth Date: 2-14-2004 **Cow** 14682045 **Tattoo:** 4422
 #Krugerrand of Donamere 490 #CH Stackler 7040
 FAR Krugerrand 410H Donamere Bachel Beauty 288
 13498476 #FAR Erianna 286F #+GMAR Hi Spade 039
 FAR Erianna 481D

+Roth Bando 8029 #Rito 3B17 of OG10 Bando
 Roth Burgess 0243 +DF Empress 6015
 13554057 Partisover Burgess 616 #N Bar Emulation EXT
 Partisover Burgess 431

BW	205-DAY	RATIO	365-DAY	RATIO
101	637	97	970	100

Performance	
BW	+5.3
WW	+47
YW	+93
MILK	+24

Ultrason	
%IMF	+1.03
RE	+1.33
FAT	+1.009
%RP	+1.07

317 LaGrand Forever 4826

Birth Date: 2-2-2004 **Cow** +14792105 **Tattoo:** 4826

BW	205-DAY	RATIO	365-DAY	RATIO
60	653	ET	962	ET

318 LaGrand Forever 4832

Birth Date: 2-3-2004 **Cow** +14831833 **Tattoo:** 4832

BW	205-DAY	RATIO	365-DAY	RATIO
80	623	ET	922	ET

319 LaGrand Forever 4994

Birth Date: 2-6-2004 **Cow** +14786312 **Tattoo:** 4994
 #Traveler 124 GDAR #QAS Traveler 23-4
 SVF GDAR 216 LTD Rachel Rito 813 GDAR
 +12309326 +GDAR Forever Lady 718 #Baldridge Oscar
 #LT Forever Lady 395 GDAR

#VDAR New Trend 315 #AAR New Trend
 Jolly R Forever 117E #VDAR Lucy 704
 +12327588 +Jolly R Forever 2008 #Candolier Forever 376
 MG S Black Diamond

BW	205-DAY	RATIO	365-DAY	RATIO
90	694	ET	900	ET

Performance	
BW	+4.3
WW	+42
YW	+73
MILK	+23

Carass	
CW	+17
MARB	+1.27
RE	+1.22
FAT	+1.014
%RP	-1.13

Ultrason	
%IMF	+1.16
RE	+1.20
FAT	+1.003
%RP	+1.02

320 LaGrand Calif Gal 4140

Birth Date: 1-8-2004 **Cow** 14682296 **Tattoo:** 4140
 +Northern Improvement 4480 GF #TC Stockman 365
 Ayres Pascalar Easy Upgrade Blackcap of RR 5367
 13884815 #Pascalar Barbara P207 #+GAR Sleep Easy 1009
 Pascalar Barbara P95

#Famous 7001 #SAF Fame
 Roth Calif Gal 1522 TK Karen 1369
 +13931517 +Diablo Calif Gal 836 #Premier Independence KN
 Martins Calif Gal

BW	205-DAY	RATIO	365-DAY	RATIO
64	564	86	823	85

Performance	
BW	-3
WW	+27
YW	+52
MILK	+21

321 LaGrand Miss Countess 4313

Birth Date: 1-28-2004 **Cow** 14682195 **Tattoo:** 4313
 +Northern Improvement 4480 GF #TC Stockman 365
 Ayres Pascalar Easy Upgrade Blackcap of RR 5367
 13884815 #Pascalar Barbara P207 #+GAR Sleep Easy 1009
 Pascalar Barbara P95

Millcreek Diversity #+GAR Sleep Easy 1009
 Roth Miss Countess 1571 Millcreek Travel Lass
 +13928295 #+Grubbs Miss Countess 252 #TC Dividend 963
 DG Miss Countess 535

BW	205-DAY	RATIO	365-DAY	RATIO
75	653	100	943	97

Performance	
BW	+8
WW	+42
YW	+76
MILK	+25

LAGRAND YEARLING HEIFERS

322 LaGrand Erica 4177

Birth Date: 1-14-2004 Cow 14682271 Tattoo: 4177

+Northern Improvement 4480 GF #TC Stockman 365
 Ayres Pascalar Easy Upgrade Blackcap of RR 5367
 13884815 #Pascalar Barbara P207 #+GAR Sleep Easy 1009
 Pascalar Barbara P95

Roths Millcreek Unique White Oak Precise 6002
 Roth Erica 2201 #Mill Creek Karen
 14134776 Roth Erica 087 #Basin Max 602C
 Basin Erica H527

BW	205-DAY	RATIO	365-DAY	RATIO
62	643	98	929	95

Performance	
BW	-1.5
WW	+39
YW	+71
MILK	+23



VDAR LUCY 425 - The Pathfinder Dam of Lot 327.

323 LaGrand Forever 4187

Birth Date: 1-15-2004 Cow 14682303 Tattoo: 4187

+Northern Improvement 4480 GF #TC Stockman 365
 Ayres Pascalar Easy Upgrade Blackcap of RR 5367
 13884815 #Pascalar Barbara P207 #+GAR Sleep Easy 1009
 Pascalar Barbara P95

#+SVF GDAR 216 LTD #Traveler 124 GDAR
 Lagrand Forever 2049 +GDAR Forever Lady 718
 +14309579 +Jolly R Forever 117E #VDAR New Trend 315
 Jolly R Forever Z008

BW	205-DAY	RATIO	365-DAY	RATIO
76	645	99	973	100

Performance	
BW	+2.0
WW	+39
YW	+73
MILK	+24

324 LaGrand Blacklass 4246

Birth Date: 1-20-2004 Cow 14682244 Tattoo: 4246

+Northern Improvement 4480 GF #TC Stockman 365
 Ayres Pascalar Easy Upgrade Blackcap of RR 5367
 13884815 #Pascalar Barbara P207 #+GAR Sleep Easy 1009
 Pascalar Barbara P95

#B/R New Design 323 #B/R New Design 036
 LaGrand Blacklass 243 B/R Ruby of Tiffany 155
 +14252841 Broken Arrow Roth MS RUSS08 +GDAR SVF Russ 184B
 Brokenarrow Blacklass3904-18

BW	205-DAY	RATIO	365-DAY	RATIO
68	655	100	996	102

Performance	
BW	+4
WW	+38
YW	+74
MILK	+25

325 LaGrand Lucy 4266

Birth Date: 1-23-2004 Cow 14682293 Tattoo: 4266

+Northern Improvement 4480 GF #TC Stockman 365
 Ayres Pascalar Easy Upgrade Blackcap of RR 5367
 13884815 #Pascalar Barbara P207 #+GAR Sleep Easy 1009
 Pascalar Barbara P95

#GT Expo #Scotch Cap
 Roth Lucy 2005 #GT Pine Siskin
 14134783 +Roth Lucy 0431 #+VDAR Lucys Boy
 +VDAR Lucy 3004

BW	205-DAY	RATIO	365-DAY	RATIO
65	636	97	922	95

Performance	
BW	-2
WW	+32
YW	+62
MILK	+24



Troy Thomas with Jim Shirley. We miss you Jim!

327 LaGrand Lucy 4825

Birth Date: 1-18-2004 Cow +14783555 Tattoo: 4825

#SAF Fame #Minerts Fortune 2000
 VNAR Fame 87G #+SAF Royal Lass 1027
 12848149 VNARO Lass 4122-133D #+Leachman Right Time
 #Vermilion O Lass JP 4122

#VDAR New Trend 315 #AAR New Trend
 VDAR Lucy 425 #VDAR Lucy 704
 #11400673 +VDAR Lucy 920 #Schearbrook Shoshone
 VDAR Lucy 329

BW	205-DAY	RATIO	365-DAY	RATIO
89	633	ET	948	ET

Performance	
BW	+1.7
WW	+39
YW	+64
MILK	+21

Carass	
CW	+1
MARB	+1.7
RE	+0.09
FAT	+0.014
%RP	-1.05

Ultrasound	
%IMF	+1.20
RE	+1.10
FAT	+1.020
%RP	-1.12

328 LaGrand Edwina 4406

Birth Date: 2-10-2004 Cow 14682341 Tattoo: 4406

#Famous 7001 #SAF Fame
 Davis Makers Mark 0287 TK Karen 1369
 +13855449 Hyline Ellen 410 #Hyline Travel Agent
 #Hyline Ellen 9062

Koupals B&B Rainmaker 9020 #Sitz SLS Rainmaker 7596
 Roth Edwina 1074 Koupal Blackcap 501
 13856264 Stevenson Edwina 4116 Stevenson Traveler JR 445D
 Stevenson Edwina 422D

BW	205-DAY	RATIO	365-DAY	RATIO
82	563	86	817	84

Performance	
BW	+3.1
WW	+35
YW	+67
MILK	+16

Ultrasound	
%IMF	-1.16
RE	+1.25
FAT	+1.006
%RP	+1.07

329 LaGrand Lucy 4425

Birth Date: 2-14-2004 Cow 14682049 Tattoo: 4425

#Famous 7001 #SAF Fame
 Davis Makers Mark 0287 TK Karen 1369
 +13855449 Hyline Ellen 410 #Hyline Travel Agent
 #Hyline Ellen 9062

#Sitz Traveler 9929 #DHD Traveler 6807
 Rocky Mt Lucy 022 Sitz Everelda Entense 1137
 +13877691 +FSHK Lucy 326 #Traveler 124 GDAR
 +VDAR Pine Drive Lucy 7

BW	205-DAY	RATIO	365-DAY	RATIO
69	632	97	949	98

Performance	
BW	+4.1
WW	+44
YW	+81
MILK	+21

Ultrasound	
%IMF	-1.06
RE	+1.33
FAT	-1.002
%RP	+1.26

330 LaGrand Lucy 4426

Birth Date: 2-14-2004 Cow 14682050 Tattoo: 4426

#Famous 7001 #SAF Fame
 Davis Makers Mark 0287 TK Karen 1369
 +13855449 Hyline Ellen 410 #Hyline Travel Agent
 #Hyline Ellen 9062

#Sitz Traveler 9929 #DHD Traveler 6807
 Rocky Mt Lucy 022 Sitz Everelda Entense 1137
 +13877691 +FSHK Lucy 326 #Traveler 124 GDAR
 +VDAR Pine Drive Lucy 7

BW	205-DAY	RATIO	365-DAY	RATIO
71	614	94	942	97

Performance	
BW	+4.1
WW	+44
YW	+81
MILK	+21

Ultrasound	
%IMF	-1.06
RE	+1.33
FAT	-1.002
%RP	+1.26

LAGRAND YEARLING HEIFERS

331 LaGrand Rita 4436

Birth Date: 2-17-2004 Cow 14682067 Tattoo: 4436

#Famous 7001
Davis Makers Mark 0287
+13855449 Hyline Ellen 410

#SAF Fame
TK Karen 1369
#Hyline Travel Agent
#Hyline Ellen 9062

#Sitz SLS Rainmaker 7596
North Fork Rita 11
+13821276 +GAR Scotch Cap 509

#GDAR Rainmaker 340
SLS Barbara Perfection 2571
#Scotch Cap
Rita 5H11 of 1B14 Rito 9J9

BW	205-DAY	RATIO	365-DAY	RATIO
94	674	103	1002	103

Performance	
BW	+5.8
WW	+46
YW	+83
MILK	+17

Ultrason	
%IMF	1-12
RE	1-30
FAT	1-007
%RP	1-13

336 LaGrand Pride Lucy 4470

Birth Date: 2-26-2004 Cow 14682111 Tattoo: 4470

#Famous 7001
Davis Makers Mark 0287
+13855449 Hyline Ellen 410

#SAF Fame
TK Karen 1369
#Hyline Travel Agent
#Hyline Ellen 9062

+GDAR SVF Russ 184B
Roth Hyline Pride Lucy 0450
+13688756 Hyline Pride Lucy 416

#GDAR Executive 727
+GDAR Forever Lady 719
+Finks Stephead
Hyline Lucy 9001

BW	205-DAY	RATIO	365-DAY	RATIO
101	639	96	977	97

Performance	
BW	+5.2
WW	+39
YW	+72
MILK	+13

Ultrason	
%IMF	1-16
RE	1-19
FAT	1-004
%RP	1-26

332 LaGrand Beauty 4379

Birth Date: 2-7-2004 Cow 14682371 Tattoo: 4379

#Famous 7001
Davis Makers Mark 0287
+13855449 Hyline Ellen 410

#SAF Fame
TK Karen 1369
#Hyline Travel Agent
#Hyline Ellen 9062

#+Leachman Right Time
North Fork Beauty 33
+13821282 +VDAR Beauty 3005

#N Bar Emulation EXT
Leachman Erica 0025
#VDAR New Trend 315
VDAR Beauty 228

BW	205-DAY	RATIO	365-DAY	RATIO
76	682	104	964	99

Performance	
BW	+2.5
WW	+45
YW	+78
MILK	+17

Ultrason	
%IMF	1-02
RE	1-22
FAT	1-005
%RP	1-13

337 LaGrand Evelyn 4497

Birth Date: 3-4-2004 Cow 14682159 Tattoo: 4497

#Famous 7001
Davis Makers Mark 0287
+13855449 Hyline Ellen 410

#SAF Fame
TK Karen 1369
#Hyline Travel Agent
#Hyline Ellen 9062

#GDAR Traveler 9161
PF 9161 Evelyn 9055
13308568 Beamans Evelyn 4596

#DHD Traveler 6807
#GDAR Sapphire 728
#Leachman Saugahatchee 3000C
Beamans Evelyn 32929

BW	205-DAY	RATIO	365-DAY	RATIO
84	723	109	1088	106

Performance	
BW	+2.0
WW	+44
YW	+79
MILK	+18

Ultrason	
%IMF	1-08
RE	1-49
FAT	1-004
%RP	1-53

333 LaGrand Pearl 4447

Birth Date: 2-19-2004 Cow 14682080 Tattoo: 4447

#Famous 7001
Davis Makers Mark 0287
+13855449 Hyline Ellen 410

#SAF Fame
TK Karen 1369
#Hyline Travel Agent
#Hyline Ellen 9062

VNAR Fame 87G
North Fork Pearl 64
13821299 #Gladwall L Pearl 908

#SAF Fame
VNARO Lass 4122-133D
#Shoshone PP 7105
#Gladwall L Pearl 5108

BW	205-DAY	RATIO	365-DAY	RATIO
N/A	729	110	N/A	N/A

Performance	
BW	+3.0
WW	+47
YW	+74
MILK	+17

Ultrason	
%IMF	1-10
RE	1-34
FAT	1-005
%RP	1-43

338 LaGrand Lucy 4515

Birth Date: 3-10-2004 Cow 14682187 Tattoo: 4515

#Famous 7001
Davis Makers Mark 0287
+13855449 Hyline Ellen 410

#SAF Fame
TK Karen 1369
#Hyline Travel Agent
#Hyline Ellen 9062

+GDAR SVF Russ 184B
Roth Hyline Lucy 0446
+13688756 Hyline Lucy 442

#GDAR Executive 727
+GDAR Forever Lady 719
#Hyline Travel Agent
Hyline Lucy 549

BW	205-DAY	RATIO	365-DAY	RATIO
95	605	91	919	91

Performance	
BW	+4.7
WW	+38
YW	+72
MILK	+14

Ultrason	
%IMF	1-12
RE	1-23
FAT	1-003
%RP	1-18

334 LaGrand Royal Lass 4450

Birth Date: 2-20-2004 Cow 14682085 Tattoo: 4450

#Famous 7001
Davis Makers Mark 0287
+13855449 Hyline Ellen 410

#SAF Fame
TK Karen 1369
#Hyline Travel Agent
#Hyline Ellen 9062

#Leachman Explorer
Sun Royal Lass 006
+13868495 +Leachman Royal Lass 613L

#N Bar Emulation EXT
Leachman Blackcap 9006
#+Brost Power Drive
Leachman Lass 1004

BW	205-DAY	RATIO	365-DAY	RATIO
85	627	95	917	92

Performance	
BW	+3.1
WW	+40
YW	+69
MILK	+15

Ultrason	
%IMF	1-10
RE	1-20
FAT	1-006
%RP	1-21

339 LaGrand Beauty 4051

Birth Date: 1-8-2004 Cow 14682106 Tattoo: 4051

#Rockn D Ambush 1531
JR Navigator 1651
13285525 JR Envious 036B

#Paramont Ambush 2172
MS Blackcap Band of RD 1301
#+JR Juice 2005
Jolly R Envious 0161

Roths Millcreek Unique
Roth Beauty 2282
14134906 +Roth Beauty 0322

White Oak Precise 6002
#Mill Creek Karen
#+SVF GDAR 216 LTD
Circle A Beauty 2004

BW	205-DAY	RATIO	365-DAY	RATIO
87	667	102	1041	107

Performance	
BW	+4.9
WW	+46
YW	+77
MILK	+14

Ultrason	
%IMF	1-24
RE	1-15
FAT	1-003
%RP	1-16

335 LaGrand Erroline 4453

Birth Date: 2-20-2004 Cow 14682090 Tattoo: 4453

#Famous 7001
Davis Makers Mark 0287
+13855449 Hyline Ellen 410

#SAF Fame
TK Karen 1369
#Hyline Travel Agent
#Hyline Ellen 9062

North Fork Mandate 7072
North Fork Missy 9034
13520756 North Fork Erroline 3098

#+Krugerrand Merger 34 (FR)
Erica 4210 BCBR
#GV Power Drive 7369
+Bear Creek Erroline 8082

BW	205-DAY	RATIO	365-DAY	RATIO
75	572	86	834	83

Performance	
BW	+1.7
WW	+41
YW	+74
MILK	+12

Ultrason	
%IMF	1-13
RE	1-19
FAT	1-011
%RP	1-28

340 LaGrand Rita 4485

Birth Date: 3-1-2004 Cow 14683533 Tattoo: 4485

#Rockn D Ambush 1531
Roth Ambush 1394
14106227 BSS Rita 9960

#Paramont Ambush 2172
MS Blackcap Band of RD 1301
#B/R New Design 036
+GAR EXT 467

#Sitz SLS Rainmaker 7596
North Fork Rita 15
+13858419 +GAR Scotch Cap 509

#GDAR Rainmaker 340
SLS Barbara Perfection 2571
#Scotch Cap
Rita 5H11 of 1B14 Rito 9J9

BW	205-DAY	RATIO	365-DAY	RATIO
98	720	109	1090	109

Performance	
BW	+5.2
WW	+49
YW	+87
MILK	+18

COMMERCIAL HEIFERS

341 Commercial Heifer
Birth Date: Cow Tattoo: 2179

343 Commercial Heifer
Birth Date: Cow Tattoo: 14

342 Commercial Heifer
Birth Date: Cow Tattoo: 405

Suggested* Sale Terms and Conditions (American Angus Association – March 15, 2005)

UNLESS OTHERWISE EXPRESSLY STATED IN THESE SALE TERMS AND CONDITIONS OR ANY OTHER WRITTEN AGREEMENT BETWEEN THE PARTIES RELATING TO THE SALE OF ANGUS CATTLE UNDER THESE SALE TERMS AND CONDITIONS, SELLER MAKES NO OTHER WARRANTIES, EXPRESS OR IMPLIED, INCLUDING ANY IMPLIED WARRANTY OF MERCHANTABILITY OR FITNESS FOR A PARTICULAR PURPOSE, EVEN IF SUCH PURPOSE IS KNOWN TO THE PARTIES.

THE REMEDIES PROVIDED IN THESE SALE TERMS AND CONDITIONS ARE THE EXCLUSIVE REMEDIES OF THE BUYER, OR ANY PARTY CLAIMING THROUGH THE BUYER, AND UNDER NO CIRCUMSTANCES WILL THE SELLER BE LIABLE FOR ANY INCIDENTAL, INDIRECT, SPECIAL, CONSEQUENTIAL, PUNITIVE OR EXEMPLARY DAMAGES UNDER ANY INDEMNITY PROVISION OR OTHERWISE.

TERMS OF SALE

Bidding

1. Each animal will be sold to the highest bidder. The person in charge will settle any disputes as to bids, and his decision on such matters will be final.

Announcements

1. If there is any inconsistency in the terms of any sale book, supplement sheet or day-of-sale announcement, (i) the day-of-sale announcement will control over both the supplement sheet and the sale book, and (ii) the supplement sheet will control over the sale book.

Cash Sale

1. All sales are for cash unless satisfactory credit arrangements, including any possible reservation of security interest by the vendor, have been made with the vendor prior to sale.

Buyer's risk

1. The risk of loss and injury of each animal passes to the buyer as soon as it is sold; but it is the obligation of the seller to ensure that animals are fed and cared for free of charge to the buyer until loaded for shipment or until the expiration of 48 hours after the sale, whichever occurs sooner.

Identification

1. The seller must ensure that each animal has a readable permanent identification mark (e.g., tattoo, hot-iron brand or freeze brand) corresponding to its registration.
2. The buyer must check all permanent identification marks for accuracy.
3. In those cases where a nickname is used by the seller, the nickname must also be accompanied by the official registered name and number of the animal.

Certificate of registration

1. A transferred certificate of registration must be furnished by the seller free of charge to the buyer for each animal within 45 days following the later of the date of sale and receipt of full payment.

Artificial insemination (AI) service certificates

1. Upon the buyer's request, AI Service Certificates must be furnished by the seller free of charge to the buyer for all females bred artificially to bulls not owned by the seller.

GUARANTEES

Health

1. Unless otherwise announced, the seller guarantees that all animals are eligible for interstate shipment as required by federal regulations.

Conformance with registration

1. The seller guarantees that all animals are registered under the rules of the American Angus Association.
2. The seller guarantees to the buyer that all animals conform to the registration certificate as entered in the Herd Book of the American Angus Association.

Pedigree

1. The seller guarantees to the buyer that the pedigree and performance data of all animals, as represented in any sales materials (including any sale book, supplement sheet or day-of-sale announcement), is accurate.
2. In those cases where a commonly understood nickname is used by the seller, the seller guarantees the pedigree of the animal based on the commonly understood nickname.

Sex

1. Unless otherwise represented by the seller, there are no guarantees that offspring will be of a particular sex.

Breeding guarantees

1. The seller guarantees that all bulls are breeders, but only if such bulls are at least 12 months old at the time of sale and have not been allowed to run with the herd until at least 14 months of age. A bull that settles a cow by natural service and passes a fertility test made by competent veterinarians mutually agreed upon by the buyer and the seller, during any six-month period of trial (provided for in paragraph 2 of the section entitled "Options and privileges of return or adjustment") will be considered a breeder. Unless otherwise agreed by the buyer and the seller, the seller makes no guarantees with respect to the ability to freeze semen.
2. The seller guarantees that all females are breeders, with the exception of: (a) calves under 12 months of age at the time of the sale; (b) animals shown after the sale has occurred (in such cases, the breeding guarantees, if any, will be those guarantees as are agreed upon between the seller and the buyer); (c) injury or disease occurring after the sale; and (d) gross negligence or willful misconduct on the part of the buyer.
3. "Safe-in-calf" females are guaranteed by the seller to have been examined by a competent veterinarian and determined to be in calf.
4. "Served" females are not guaranteed to be in calf.
5. "Pasture-bred" females have been exposed but are not guaranteed to be in calf.
6. "Open" females have not been served and are guaranteed by the seller to be without calf.
7. Donor females:
 - a. Unless otherwise agreed by the buyer and the seller, a female that has been used in an embryo transfer program is not guaranteed to be a breeder after the date of the sale.
 - b. Unless otherwise agreed by the buyer and the seller, a female is not guaranteed to be a breeder after the date of the sale, when that female is to be used, or attempted to be used, in an embryo transfer program.
8. The seller makes the following guarantees with respect to all "pregnant recipients": (i) that the female is pregnant, (ii) that the resulting calf is of the pedigree represented, and (iii) that the resulting calf is of the sex represented (if so represented).

Genetic defect guarantee

1. All animals are guaranteed by the seller not to produce a calf with the following defects for a period of two years after the date of sale: Dwarfism, Osteopetrosis (marble bone disease), Double Muscling, Syndactyly (mule foot) and Heterochromia Irides (White Eye).
2. The buyer must notify the seller in writing immediately upon the birth of a calf suspected of being defective or immediately after determination is made that such calf is defective.
3. The seller at his expense will be permitted, and provided with reasonable opportunity, to obtain DNA material of an alleged defective calf and its sire and dam for the purpose of DNA-marker analysis to establish parenthood.
4. The animals will be returned by the buyer to the seller at the buyer's expense (unless prohibited by the health requirements of the seller's state).

5. The return of the purchase price in connection with a defect-producing animal will be deemed full satisfaction and settlement.
6. The buyer and seller agree to fully and promptly comply with all rules of the American Angus Association relating to genetic defects.
7. If there is a dispute as to whether or not a calf is defective, the American Angus Association will make the final determination.
8. Registration certificates issued after January 30, 1979, for animals that, prior to issuance of the certificate, had been reported and verified as carriers of recessive genetic defects or genetic factor or had tested free of certain genetic defects or genetic factors contain the following codes relative to such defect:
 - S - Syndactyly
 - H - Double muscling
 - D - Dwarfism
 - M - Osteopetrosis
 - HI - Heterochromia Irides
 - HG - Horn gene
 - R - Red
 - X - Multiple defects, check list for kind
 - F - Tested for defect printed without producing abnormal calves
 - GDF - Produced 35 or more calves from daughters without a genetic defect or genetic factor
 - WT - Wild Type Color Gene

The absence of any such notation on a pedigree of an animal, in a sale book, does not establish that the animal in question is not a carrier of any such genetic defect or genetic factor.

Semen

1. Unless otherwise agreed by the buyer and the seller, with respect to the sale of semen the seller makes no guarantees with respect to the performance or characteristics of such semen and buyer is purchasing such semen "as is."

Embryos

Unless otherwise agreed by the buyer and the seller, with respect to the sale of embryos the seller makes no guarantees with respect to the performance or characteristics of such embryos and buyer is purchasing such embryos "as is."

Options and privileges of return or adjustment

1. Except as provided in paragraphs 2 and 3 of this section, all claims for adjustment or refund must be made in writing on or before the later of (i) six months after the sale date and (ii) the date on which the animal reaches 30 months of age.
2. All claims relating to genetic defects will be handled in accordance with the section "Genetic defect guarantee."
3. All claims relating to the misrepresentation of service sire and all claims relating to paragraphs 10 and 11 of this section must be made in writing on or before the second anniversary of the date of sale.
4. If an animal is claimed to be a non-breeder, the animal may be returned to the seller if in good condition and complying with the health requirements of the seller's state. The seller is entitled to six months trial following the return of the animal in which to prove that the animal is a breeder. If at the end of the six-month period the seller is unable to prove the animal is a breeder, the seller must, at the option of the buyer, replace the animal with another of equal value or refund the purchase price. The return of the full purchase price will be deemed full satisfaction and settlement. Any expense incurred for transporting an animal claimed to be a non-breeder will be the responsibility of the buyer, except that the seller will be responsible for transportation costs in excess of the distance between the buyer's farm and the location where the sale took place. If the seller proves the animal to be a breeder, it will be the obligation of the buyer to take delivery of the animal and pay all transportation expenses.
5. If a female sold as "safe in calf" proves not to be in calf, the buyer may receive service from the bull previously used, if available. If the bull is not available, the seller must make a satisfactory adjustment on the purchase price to the buyer or, at the buyer's option, refund the purchase price upon return of the animal to the farm of the seller. Any adjustment provided for in this paragraph 6 will absolve the seller from further liability, except in if such female proves to be a non-breeder. If a female represented as "safe in calf" to a certain bull at the time of sale proves to have been bred to a different bull, the seller must make a satisfactory adjustment on the purchase price to the buyer or, at the buyer's option, refund the purchase price upon return of the animal to the farm of the seller (adjustments will not be considered to be a breeding fee or an allocation of the purchase price to any unborn calf).
6. If a female sold as "open" proves to be with calf, the buyer may return the animal to the farm of the seller prior to calving for a refund of the full purchase price or for another animal of equal value, whichever is acceptable to the buyer. The Seller is responsible for all transportation expenses.
7. Cows with calves at their side are presumed to be breeders with no further fertility guarantee.
8. White skin or hair must not be painted or altered. If such painting or alteration has occurred, the buyer may return the animal to the farm of the seller for a refund of the full purchase price or for another animal of equal value, whichever is acceptable to the buyer.
9. If an animal (including the offspring of a pregnant recipient) is sold and at a later date proves not to have been eligible for registration under the rules of the American Angus Association, the seller must make a satisfactory adjustment on the purchase price to the buyer, or at the option of the buyer, refund the purchase price upon the return of the animal to the farm of the seller.
10. If (i) an animal is sold (including the offspring of a pregnant recipient) and through DNA-marker-typing is proven to have incorrect parentage, as represented by the certificate of registration, and for which parentage can be determined, or (ii) the resulting calf of a pregnant recipient is not of the sex represented, the seller is obligated to make a satisfactory adjustment on the purchase price to the buyer or, at the buyer's option, refund the purchase price upon the return of the animal to the farm of the seller.
11. Except as provided in paragraphs 4 and 6 of this section, all transportation expenses incurred will be the responsibility of the buyer, except that the seller will be responsible for transportation costs in excess of the distance between the buyer's farm and the location where the sale took place.

Retention of genetic material

1. Unless otherwise agreed in writing by the seller and the buyer, the seller will not retain any genetic material of any animal (including embryos and semen) for the purpose of cloning.

Miscellaneous

1. The above terms and conditions of sale constitute a contract between the buyer and the seller of each animal and are equally binding upon both parties. Each sale or resale of an animal constitutes a separate transaction.
2. Neither the sponsor or sponsors, the sale manager, nor any other person connected with the management of the sale, assumes any liability, legal or otherwise.
3. These sale terms and conditions and all rights, obligations and duties arising hereunder and all disputes arising hereunder will be construed in accordance with, and governed by, the laws of the state in which the sale of the animal or animals occurs, without giving effect to such state's choice of law rules.

* For voluntary consideration and use by sellers in their independent business judgment.

LaGrand

ANGUS HEREFORD RANCH SATURDAY, APRIL 9, 2005, NOON (CST)

At LaGrand Angus and Hereford Ranch North - 11 miles north of Salem, South Dakota.



LAGRAND SPECIAL DESIGN H436 - Lot 1



LAGRAND NEW DESIGN 4080 - Lot 36



LAGRAND NEW HORIZON 4211 - Lot 61



LAGRAND 338 RIGHT TIME 4018 - Lot 170



Sale Managers, TOM BURKE, KURT SCHAFF,
JEREMY HAAG
AMERICAN ANGUS HALL OF FAME, At the
WORLD ANGUS HEADQUARTERS
Box 660, Smithville, MO 64089-0660
Phone: (816) 532-0811 • Fax: (816) 532-0851
E-mail: angushall@earthlink.net
www.angushall.com

PRESORTED
FIRST CLASS
U.S. POSTAGE
PAID
SEDALIA, MO
PERMIT #210